

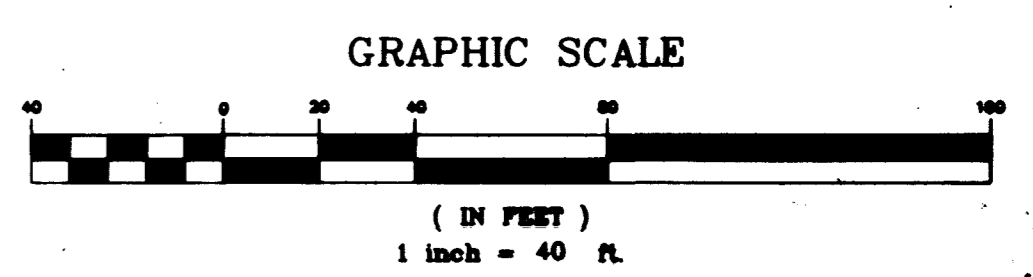
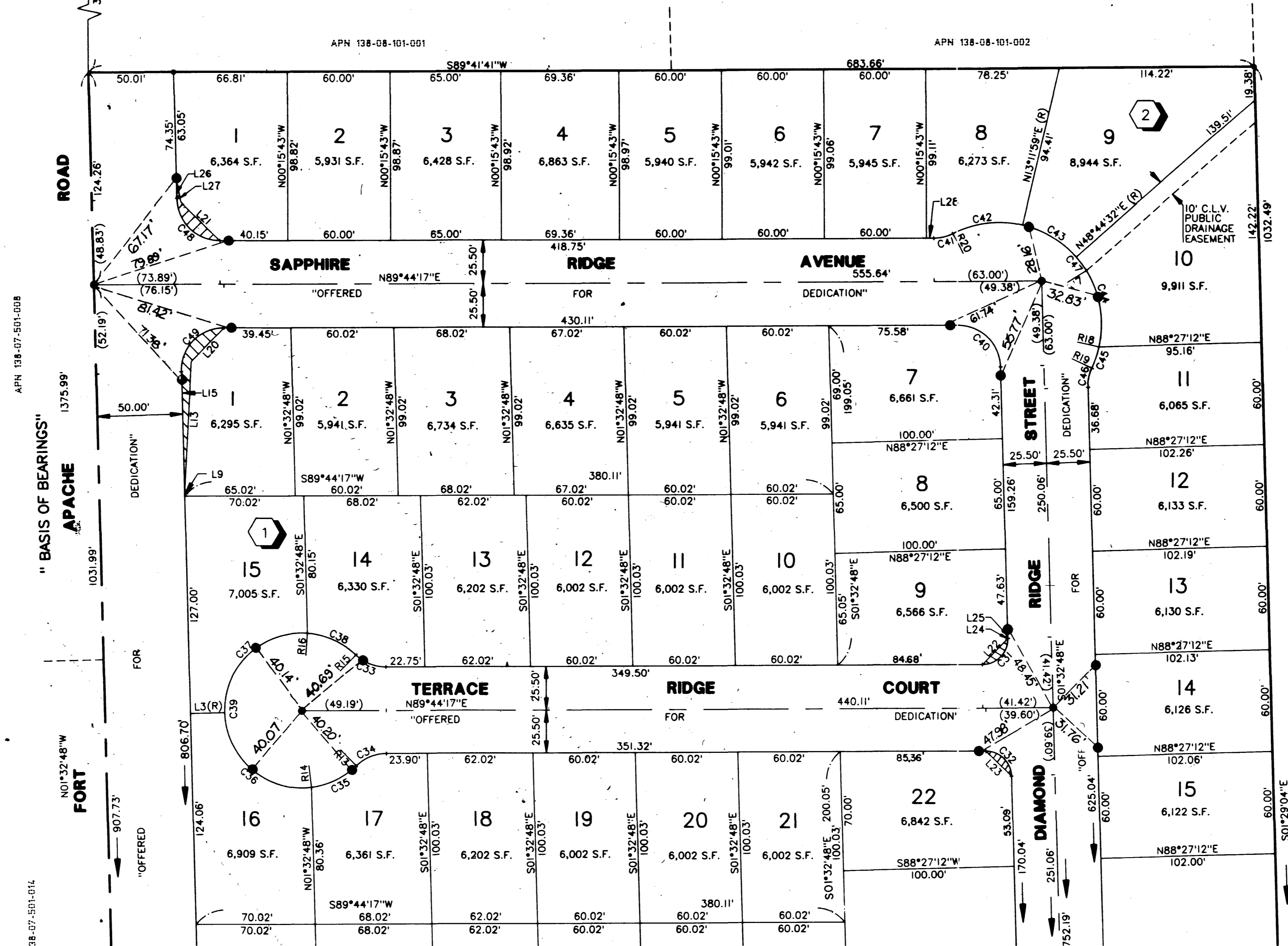
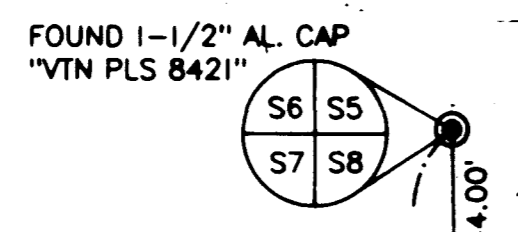
261009

01239

# DIAMOND RIDGE - UNIT 7

BEING A PORTION OF THE NORTHWEST QUARTER (NW 1/4) OF THE NORTHWEST QUARTER (NW 1/4) OF SECTION 8, TOWNSHIP 20 SOUTH, RANGE 60 EAST, M.D.M., CITY OF LAS VEGAS, CLARK COUNTY, NEVADA

## MONUMENTATION TIE MAP



### LEGEND

- P.O.B. : POINT OF BEGINNING
- 15 LOT NUMBER / RESIDENTIAL = 75
- 2 BLOCK NUMBER
- R1 RADIAL LINE NUMBER (SEE SHEET 4 OF 4)
- L3 COURSE NUMBER (SEE SHEET 4 OF 4)
- C2 CURVE NUMBER (SEE SHEET 4 OF 4)
- FOUND MONUMENT AS DESCRIBED
- SET TYPE III MONUMENT - "VTN PLS 9105"
- SET NAIL & BRASS TAG "PLS 9105" OR SAWCUT TOP OF CURB ON PROLONGATION OF PROPERTY LINES, PER NOTE 1
- S.F. SQUARE FEET
- CENTERLINE
- LOT LINE
- BOUNDARY LINE
- SIGHT VISIBILITY RESTRICTION EASEMENT PER C.L.V. STANDARD DRAWING #404.1600

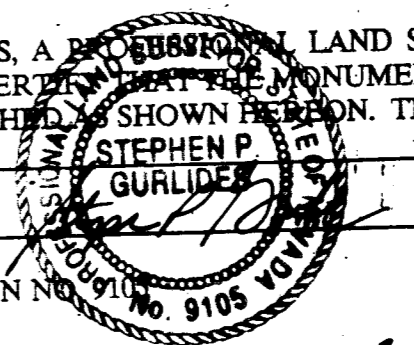
### NOTES

- ALL REAR LOT CORNERS SHALL BE SET WITH A NAIL AND TAG "P.L.S. 9105" ON BLOCK WALL AND ALL FRONT OR SIDE LOT CORNERS ADJOINING RIGHT-OF-WAY SHALL BE MARKED BY THE SAWCUTTING OF THE BACK OF CURBS ON THE PROLONGATION OF THE PROPERTY LINES.
- DIRECT VEHICULAR ACCESS TO FORT APACHE ROAD FROM ABUTTING LOTS IS PROHIBITED.

SEE SHEET 2 OF 4

I, STEPHEN P. GURLIDES, A REGISTERED LAND SURVEYOR IN THE STATE OF NEVADA, DO HEREBY CERTIFY THAT THE MONUMENTS HAVE BEEN SET AND THE TIE DISTANCE ESTABLISHED AS SHOWN HEREON. THIS SURVEY WAS COMPLETED ON \_\_\_\_\_

STEPHEN P. GURLIDES  
NEVADA CERTIFICATION NO. 9116



12-29-98

ACT	DATE	BY	REVISION
1	4/14/95	VCL	REVISE SVRE & GILMORE ROW TO 51' WIDE

W.O. 4734  
SHEET 3 OF 4  
VCL

12823

058-4455-7

Book 75 Page 52

