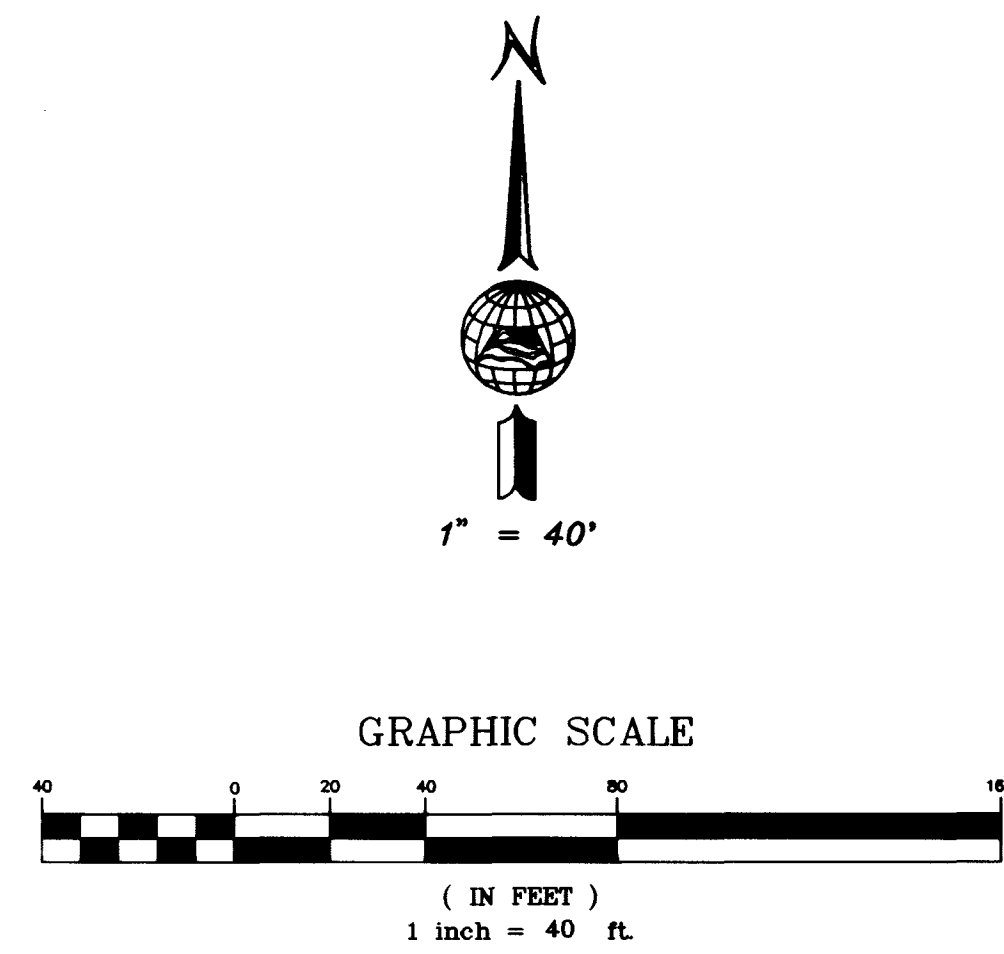


MONUMENT TIE MAP OF ELSTNER ESTATES - PHASE 2

A PORTION OF THE SOUTHEAST QUARTER (SE 1/4) OF SECTION 12,
TOWNSHIP 20 SOUTH, RANGE 60 EAST, M.D.M., CITY OF LAS VEGAS,
CLARK COUNTY, NEVADA



NOT A PART
ELSTNER ESTATES SUBDIVISION
BOOK 3, PAGE 86

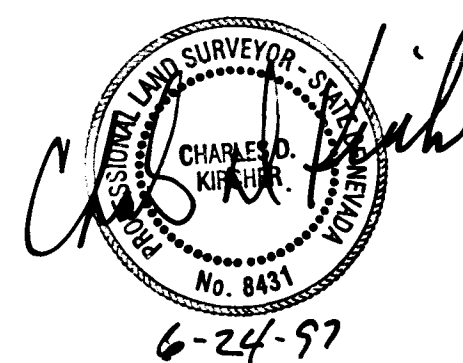
LEGEND

- BOUNDARY LINE
- △ SET 5/8" REBAR W/ ALCAP
REF. MON. PLS # 8431
- SET BRASS CAP IN TOP OF CURB
PLS # 8431
- SET 5/8" REBAR W/ALCAP
PLS # 8431 W/REFERENCE TIES
- ⊙ FOUND POINT AS NOTED
- FOUND POINT AS NOTED
- 1 LOT NUMBER

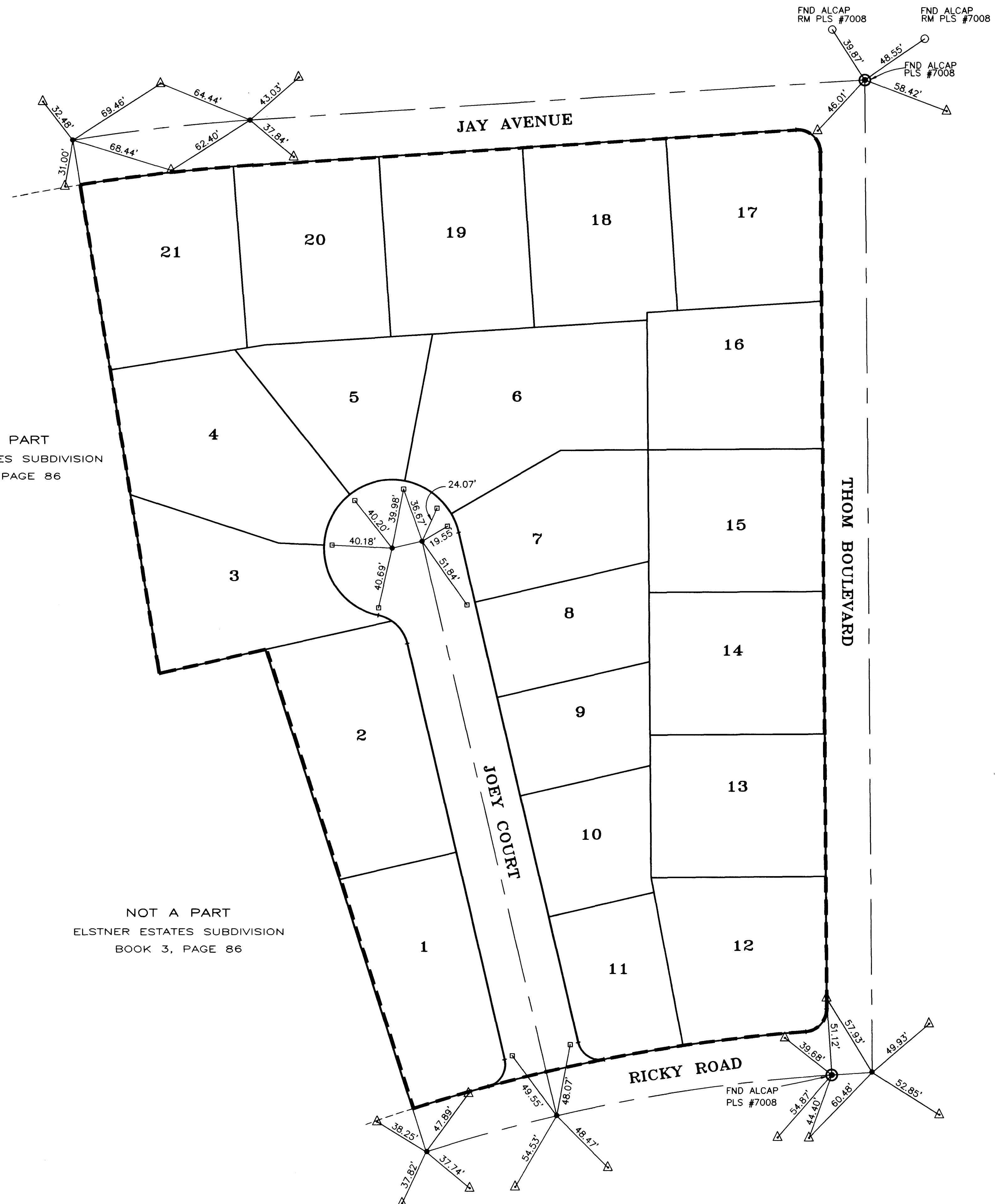
SURVEYOR'S CERTIFICATE

I, CHARLES D. KIRCHER, A PROFESSIONAL LAND SURVEYOR, REGISTERED IN THE STATE OF NEVADA, DOES HEREBY CERTIFY THAT THE MONUMENTS HAVE BEEN SET AND THE TIE DISTANCE ESTABLISHED AS SHOWN HEREON. THIS SURVEY WAS COMPLETED ON JUNE 16, 1997.

CHARLES D. KIRCHER
PROFESSIONAL LAND SURVEYOR
STATE OF NEVADA
REGISTRATION NO. 8431



NOT A PART
ELSTNER ESTATES SUBDIVISION
BOOK 3, PAGE 86



Job Number 51728	Scale AS SHOWN	Drawn by WB	Checked by WB	File No. 728MON	
Sheet Number 1	Date 5/19/97			Date 5/19/97	Date
				No. REVISIONS	Date
				Date	Date

901 N. Green Valley Pkwy.
Suite 100 - Nevada 89044
Las Vegas, NV 89121
Tel: 702/362-7275
Fax: 702/362-7280

POST,
BUCKLEY,
SCHUH &
BERNAN

ENGINEERING • PLANNING • SURVEYING • CONSTRUCTION SERVICES

MONUMENT TIE MAP
FOR
ELSTNER ESTATES
PHASE 2
BOOK 70, PAGE 48 OF PLATS
CITY OF LAS VEGAS
CLARK COUNTY, NEVADA

