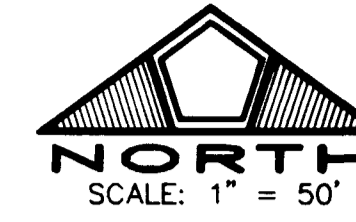


MONUMENT TIE MAP EL CAPITAN RANCH - UNIT NO. 9

LYING WITHIN THE NORTHEAST QUARTER (NE 1/4)
OF SECTION 8, TOWNSHIP 20 SOUTH, RANGE 60 EAST, M.D.M.,
CITY OF LAS VEGAS, CLARK COUNTY, NEVADA.

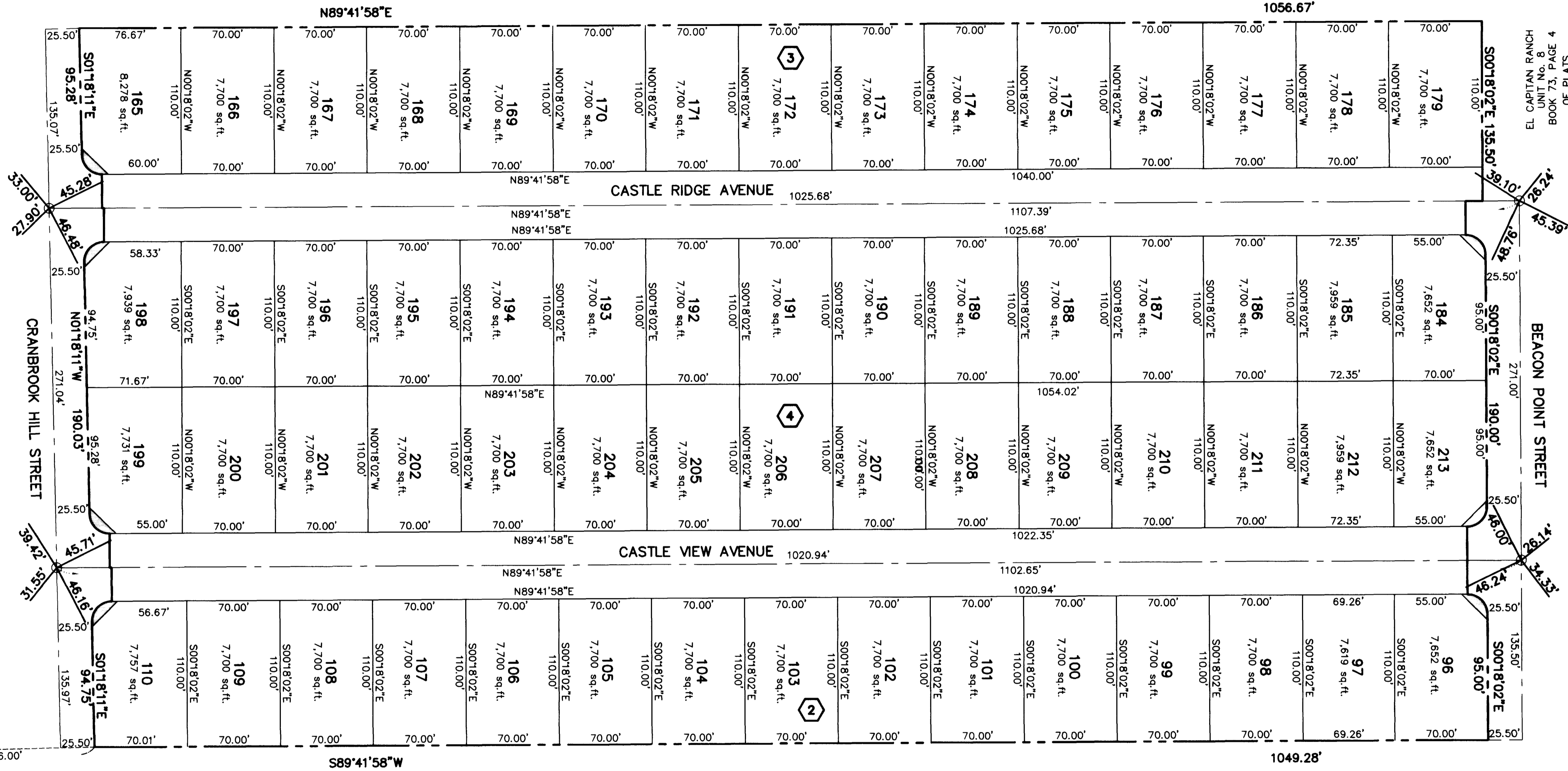


EL CAPITAN RANCH
UNIT No. 8
BOOK 73, PAGE 4
OF PLATS

EL CAPITAN RANCH
UNIT No. 8
BOOK 73, PAGE 4
OF PLATS



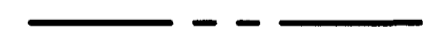
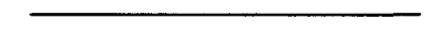







EL CAPITAN RANCH
UNIT No. 8
BOOK 73, PAGE 4
OF PLATS

BEACON POINT STREET



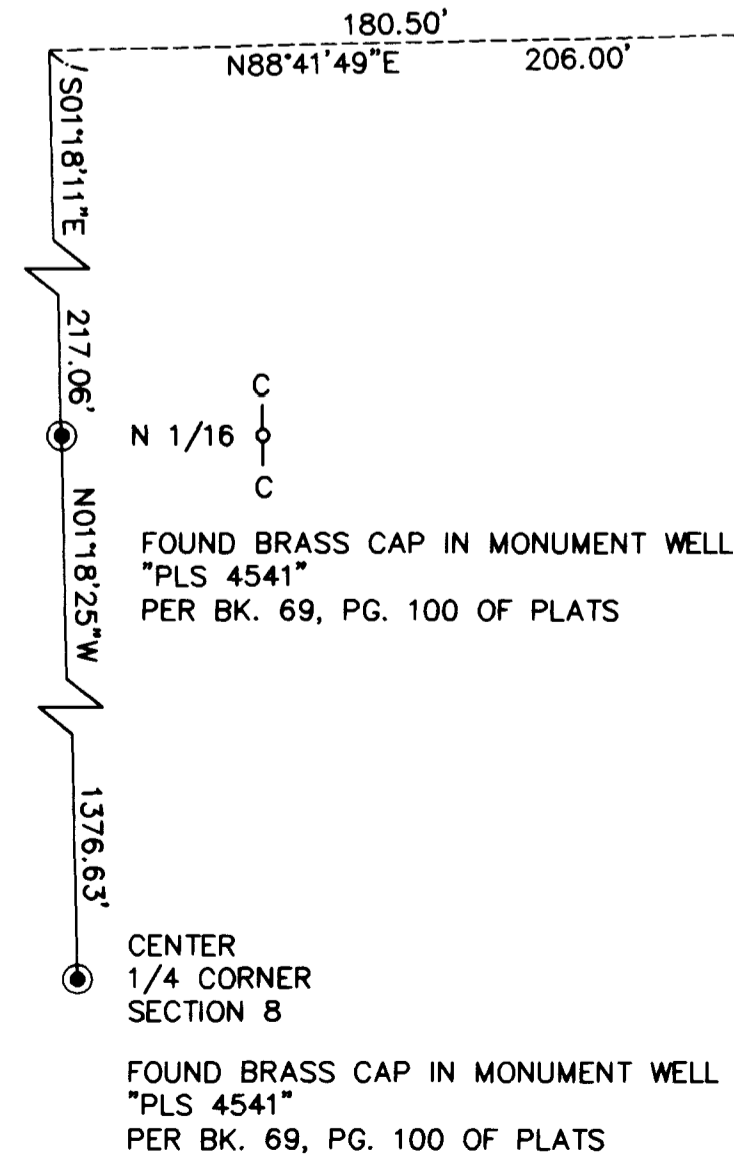
EL CAPITAN RANCH
UNIT No. 8
BOOK 73, PAGE 4
OF PLATS

LEGEND

-  FOUND MONUMENTATION AS SHOWN AND DESCRIBED
-  FOUND TYPE III MONUMENT - P.L.S. 4541
-  PROPERTY LINE
-  RIGHT OF WAY LINE
-  STREET CENTERLINE
-  BLOCK DESIGNATION
-  LOT NUMBER
-  TOTAL NUMBER OF LOTS IN SUBDIVISION = 60
-  SIGHT VISIBILITY RESTRICTION EASEMENT (NO LANDSCAPING OR SIGHT RESTRICTING IMPROVEMENTS TALLER THAN 30 INCHES ALLOWED WITHIN THE AREAS SHADED.)
-  S.F.
-  SQUARE FEET

| CURVE | DELTA | RADIUS | LENGTH | TANGENT |
|-------|-----------|--------|--------|---------|
| 1 | 88°59'51" | 15.00' | 23.30' | 14.74' |
| 2 | 91°00'09" | 15.00' | 23.82' | 15.26' |
| 3 | 90°00'00" | 15.00' | 23.56' | 15.00' |

| LINE | BEARING | DISTANCE |
|------|-------------|----------|
| L1 | N89°41'58"E | 41.21' |
| L2 | S00°18'02"E | 25.50' |
| L3 | N00°18'02"W | 25.50' |
| L4 | N89°41'58"E | 1.42' |
| L5 | S89°41'58"W | 12.91' |
| L6 | S00°18'02"E | 51.00' |



03 FEBRUARY 1999

JOB NO. 0134.0009/0006

14054

