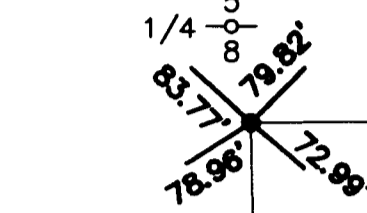


MONUMENT TIE MAP EL CAPITAN RANCH - UNIT NO. 9

BEING A PORTION OF THE NORTHEAST QUARTER (NE 1/4)
OF SECTION 8, TOWNSHIP 20 SOUTH, RANGE 60 EAST, M.D.M.,
CITY OF LAS VEGAS, CLARK COUNTY, NEVADA.

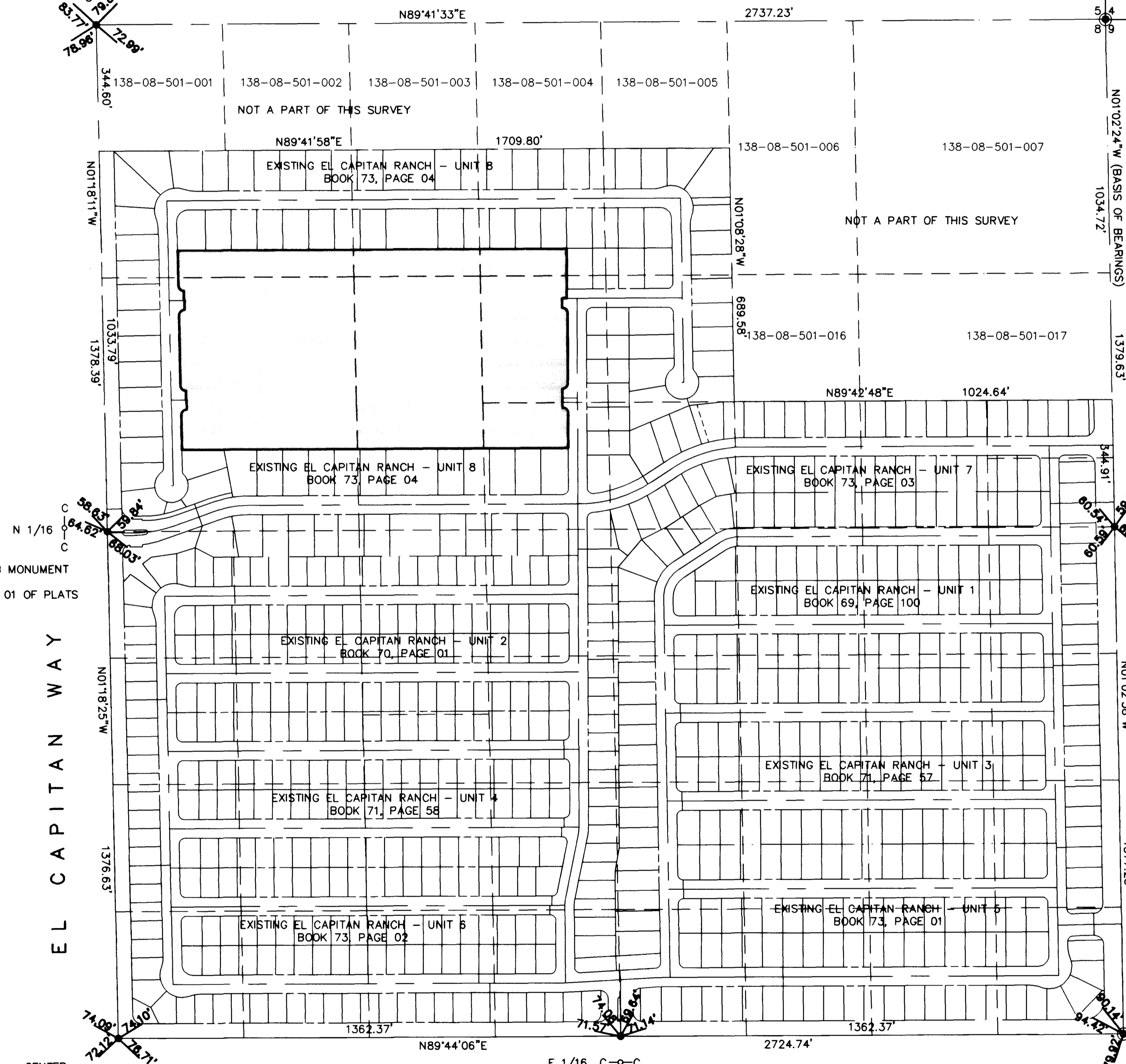


FOUND TYPE II-A MONUMENT
PER BK. 69, PG. 100 OF PLATS
PLS 4541



ALEXANDER ROAD

FOUND ALUMINUM CAP
PLS 7004



FOUND TYPE II-B MONUMENT
PLS 4541
PER BK. 70, PG. 01 OF PLATS

N 1/16

FOUND TYPE II-B MONUMENT
PLS 4541
PER BK. 69, PG. 100 OF PLATS

N 1/16

FOUND TYPE I MONUMENT
PLS 4541
PER BK. 69, PG. 100 OF PLATS

CENTER
1/4 CORNER
SECTION 8

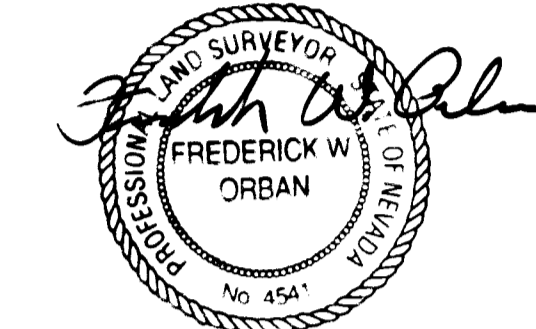
E 1/16 C-O-C
FOUND TYPE II-B MONUMENT
PLS 4541
PER BK. 69, PG. 100 OF PLATS

FOUND ALUMINUM CAP
PLS 4541
PER BK. 69, PG. 100 OF PLATS

GOWAN ROAD
SURVEY ANALYSIS

SURVEYOR'S CERTIFICATE

I, FREDERICK W. ORBAN, A PROFESSIONAL LAND SURVEYOR REGISTERED IN THE STATE OF NEVADA, DO HEREBY CERTIFY THAT THE MONUMENTS HAVE BEEN SET AND THE TIE DISTANCES ESTABLISHED AS SHOWN HEREON. THIS SURVEY WAS COMPLETED ON FEBRUARY 3, 1999.



2/3/99
FREDERICK W. ORBAN
PROFESSIONAL LAND SURVEYOR
NEVADA CERTIFICATE NO. 4541

REFERENCES

- RECORD OF SURVEY FILE 42, PAGE 15
- RECORD OF SURVEY FILE 63, PAGE 60
- RECORD OF SURVEY FILE 67, PAGE 80
- RECORD OF SURVEY FILE 69, PAGE 73
- RECORD OF SURVEY FILE 73, PAGE 4
- RECORD OF SURVEY FILE 73, PAGE 46
- PARCEL MAP FILE 5, PAGE 25
- PARCEL MAP FILE 39, PAGE 87

LEGEND

- FOUND MONUMENTATION AS SHOWN (UNLESS OTHERWISE NOTED) PER BOOK 69, PAGE 100, OF PLATS
- ⊙ FOUND MONUMENTATION AS SHOWN PER FILE 73, PAGE 4 OF SURVEYS
- ▭ UNIT BOUNDARY

NOTE: VACATION OF PATENT EASEMENTS AND RIGHT OF WAY PER VAC 15-95 RECORDED AUGUST 14, 1995 BOOK 950814 INST. #00679

03 FEBRUARY 99

JOB NO. 0134.0009

14053

FM-145-95

SHEET 2 OF 3

BOOK 73 PAGE 33
058-4396-9

