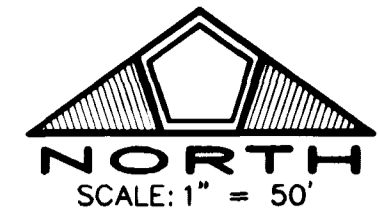


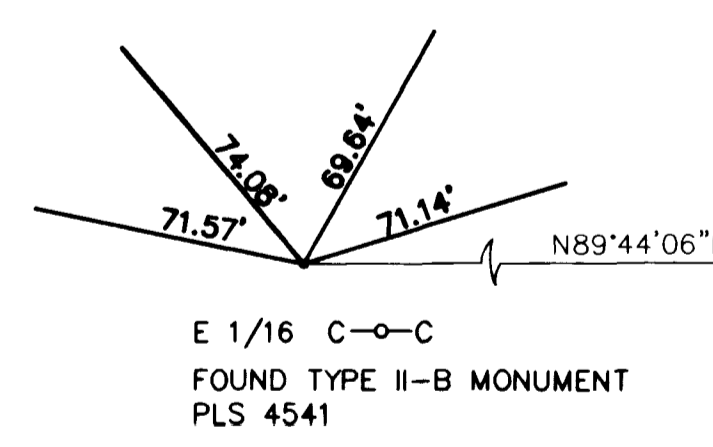
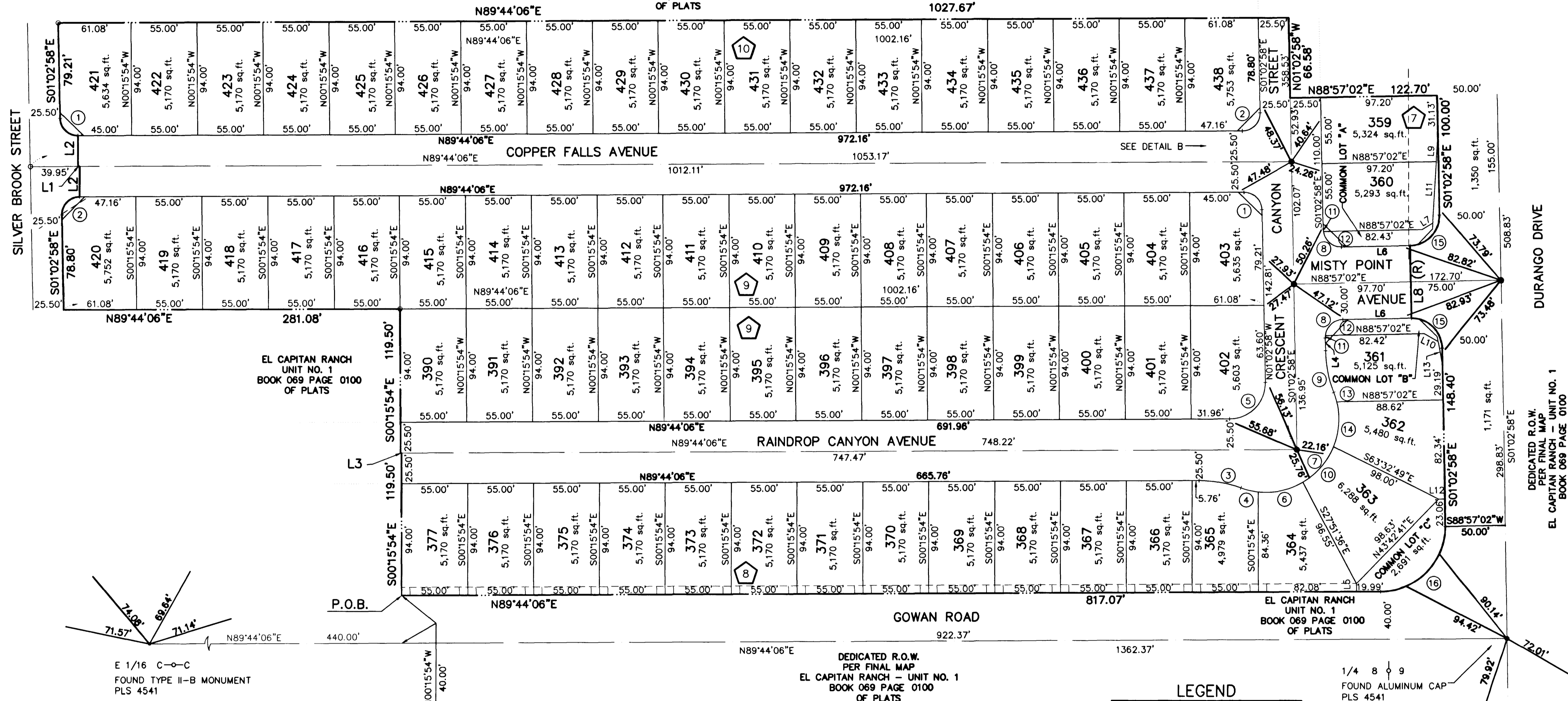
MONUMENT TIE MAP EL CAPITAN RANCH - UNIT NO. 5

BEING A PORTION OF THE NORTHEAST QUARTER (NE 1/4)
OF SECTION 8, TOWNSHIP 20 SOUTH, RANGE 60 EAST, M.D.M.,
CITY OF LAS VEGAS, CLARK COUNTY, NEVADA.



EL CAPITAN RANCH
UNIT NO. 3
BOOK 71, PAGE 57
OF PLATS

EL CAPITAN RANCH
UNIT NO. 1
BOOK 069 PAGE 0100
OF PLATS



DEDICATED R.O.W.
PER FINAL MAP
EL CAPITAN RANCH - UNIT NO. 1
BOOK 069 PAGE 0100
OF PLATS

LEGEND

- SET TYPE - III MONUMENT
P.L.S. 4541
(UNLESS OTHERWISE NOTED)
- FOUND MONUMENTATION
AS SHOWN AND DESCRIBED
- FOUND TYPE-III MONUMENT PLS 4541
- — — — — PROPERTY LINE
- — — — — RIGHT OF WAY LINE
- — — — — STREET CENTERLINE
- BLOCK DESIGNATION
- 378 — LOT NUMBER
TOTAL NUMBER OF LOTS IN
SUBDIVISION = 68
- — — — — SIGHT VISIBILITY RESTRICTION EASEMENT (NO
LANDSCAPING OR SIGHT RESTRICTING IMPROVEMENTS
TALLER THAN 30 INCHES ALLOWED WITHIN THE
AREAS SHADED)

CURVE TABLE

CURVE	DELTA	RADIUS	LENGTH	TANGENT
1	89°12'56"	15.00'	23.36'	14.80'
2	90°47'04"	15.00'	23.77'	15.21'
3	20°18'00"	100.00'	35.43'	17.90'
4	14°04'14"	61.00'	14.98'	7.53'
5	90°47'04"	30.00'	47.53'	30.41'
6	36°29'18"	61.00'	38.85'	20.11'
7	131°23'05"	61.00'	139.88'	135.05'
8	90°00'00"	15.00'	23.56'	15.00'
9	20°18'01"	100.00'	35.43'	17.90'
10	37°22'15"	61.00'	39.79'	20.63'
11	07°39'44"	15.00'	2.01'	1.00'
12	82°20'16"	15.00'	21.56'	13.12'
13	07°54'01"	61.00'	8.41'	4.21'
14	35°33'17"	61.00'	37.85'	19.56'
15	90°00'00"	25.00'	39.27'	25.00'
16	90°47'04"	54.00'	85.56'	54.74'

LINE TABLE

LINE	BEARING	DISTANCE
L1	S89°44'06"W	1.11'
L2	N00°15'54"W	25.50'
L3	N89°44'06"E	0.75'
L4	S01°02'58"E	10.25'
L5	S00°15'54"E	6.75'
L6	N88°57'02"E	57.20'
L7	N58°57'02"E	10.31'
L8	S01°02'58"E	60.00'
L9	N03°16'00"E	23.94'
L10	N61°02'58"W	13.23'
L11	N03°16'00"E	51.99'
L12	N88°57'02"E	5.19'
L13	N10°27'42"W	19.45'

11 SEPTEMBER 97 (M)

JOB NO. 0134.0009
13856

058-4396-5

