

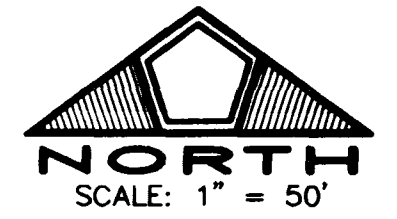
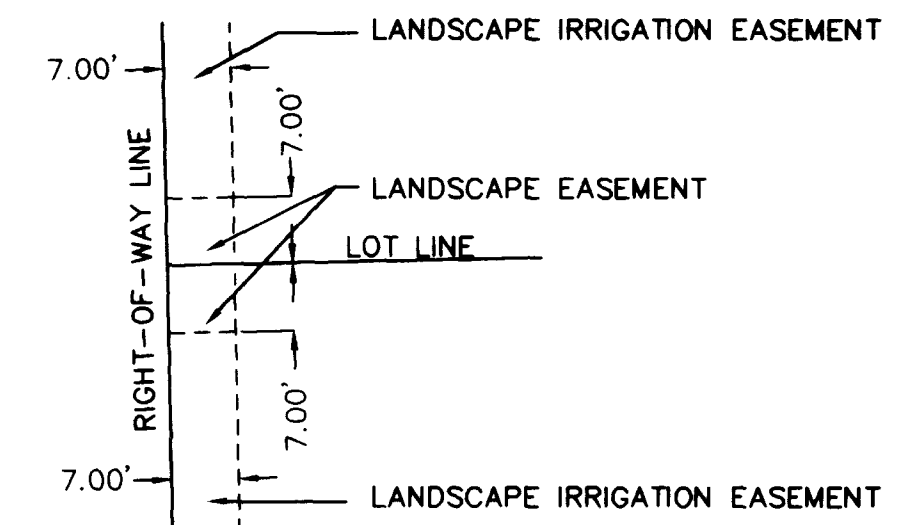
MONUMENT TIE MAP EL CAPITAN RANCH - UNIT NO. 4

BEING A PORTION OF THE NORTHEAST QUARTER (NE 1/4)
OF SECTION 8, TOWNSHIP 20 SOUTH, RANGE 60 EAST, M.D.M.,
CITY OF LAS VEGAS, CLARK COUNTY, NEVADA.

LINE	BEARING	DISTANCE
L1	N01°18'25"W	8.03'
L2	N01°18'25"W	35.98'
L3	N00°15'54"W	29.50'
L4	N89°44'06"E	7.05'
L5	N00°15'54"W	51.00'

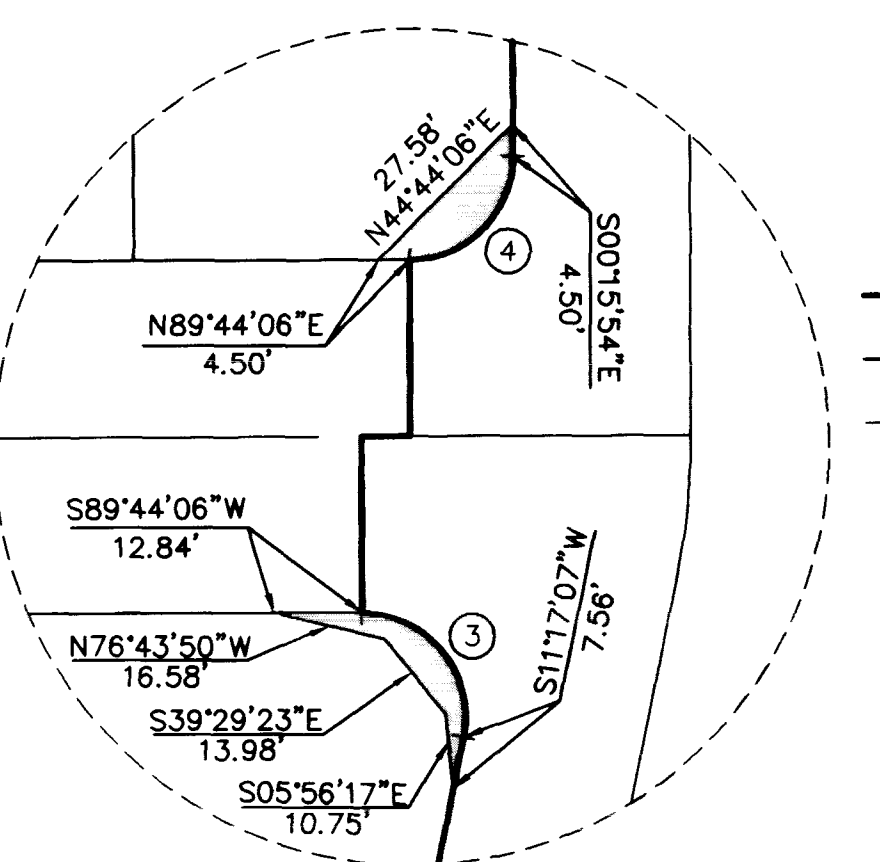
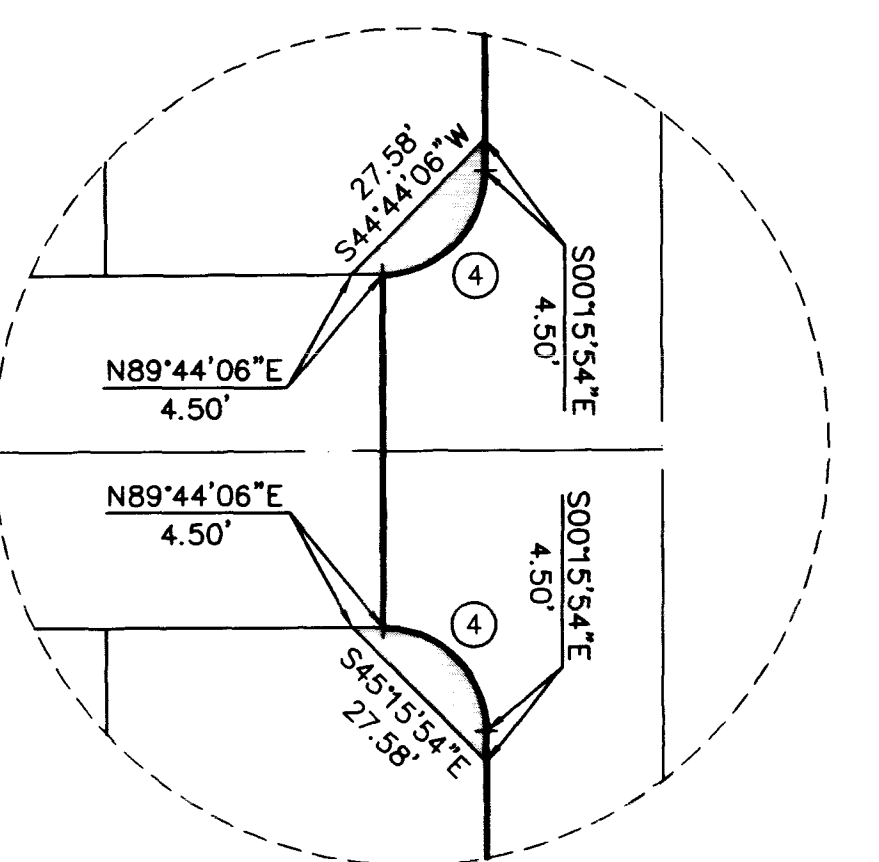
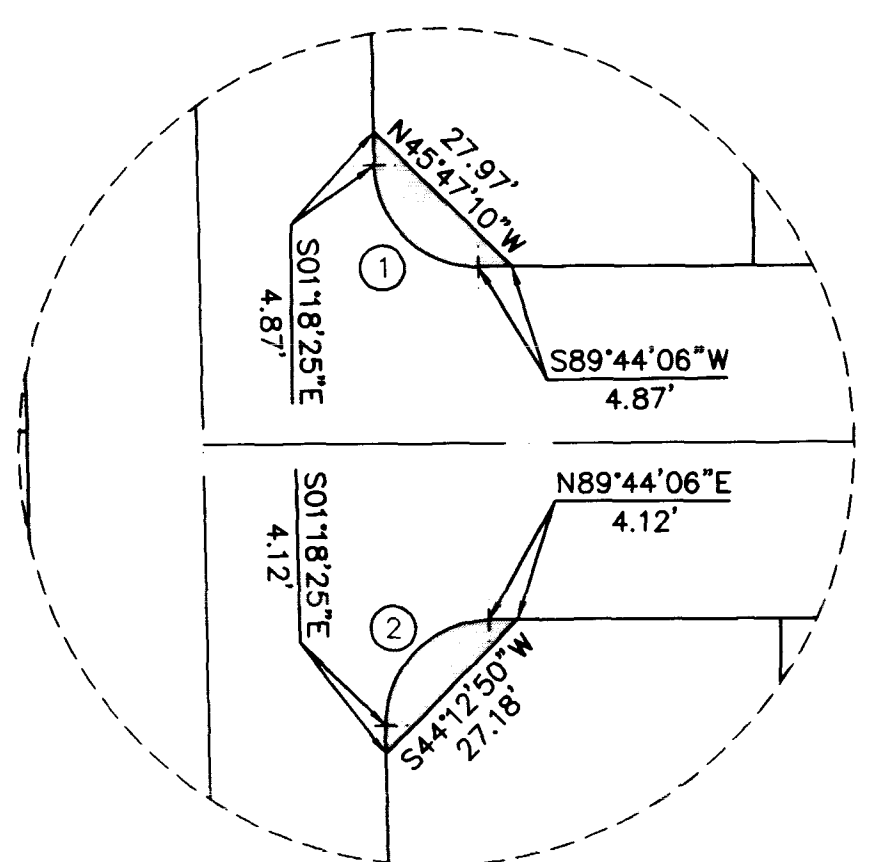
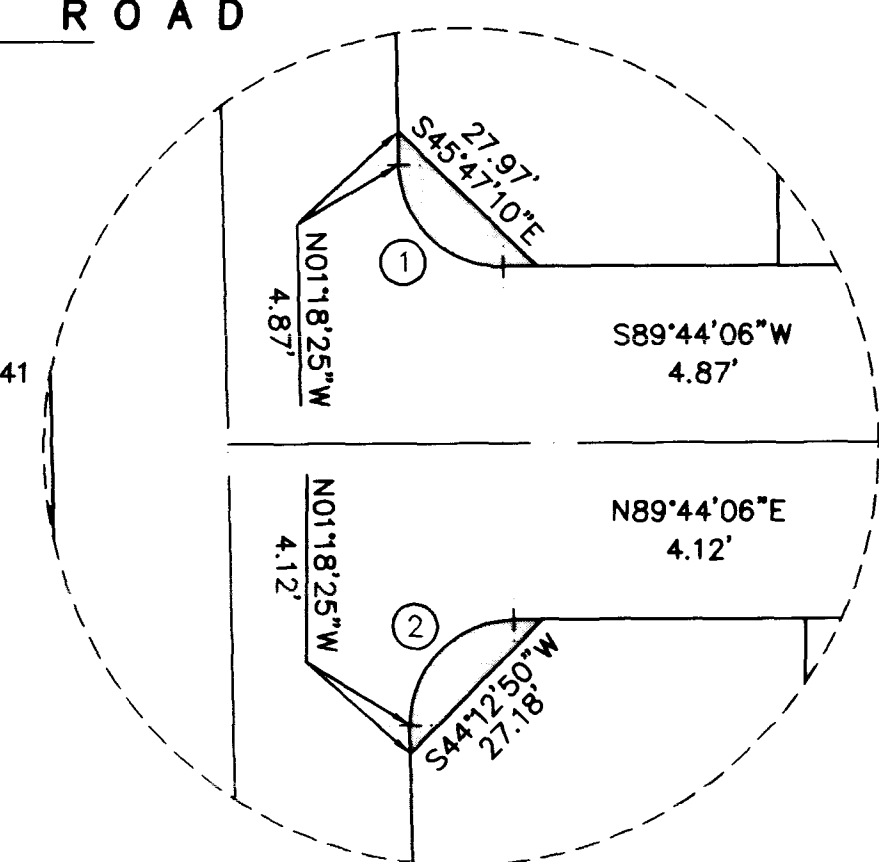
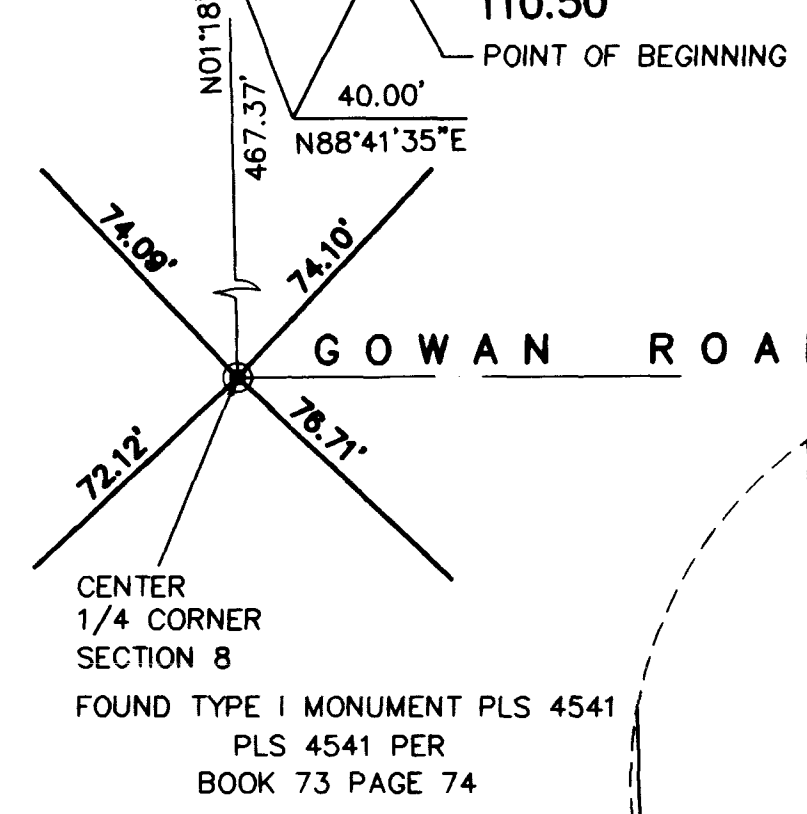
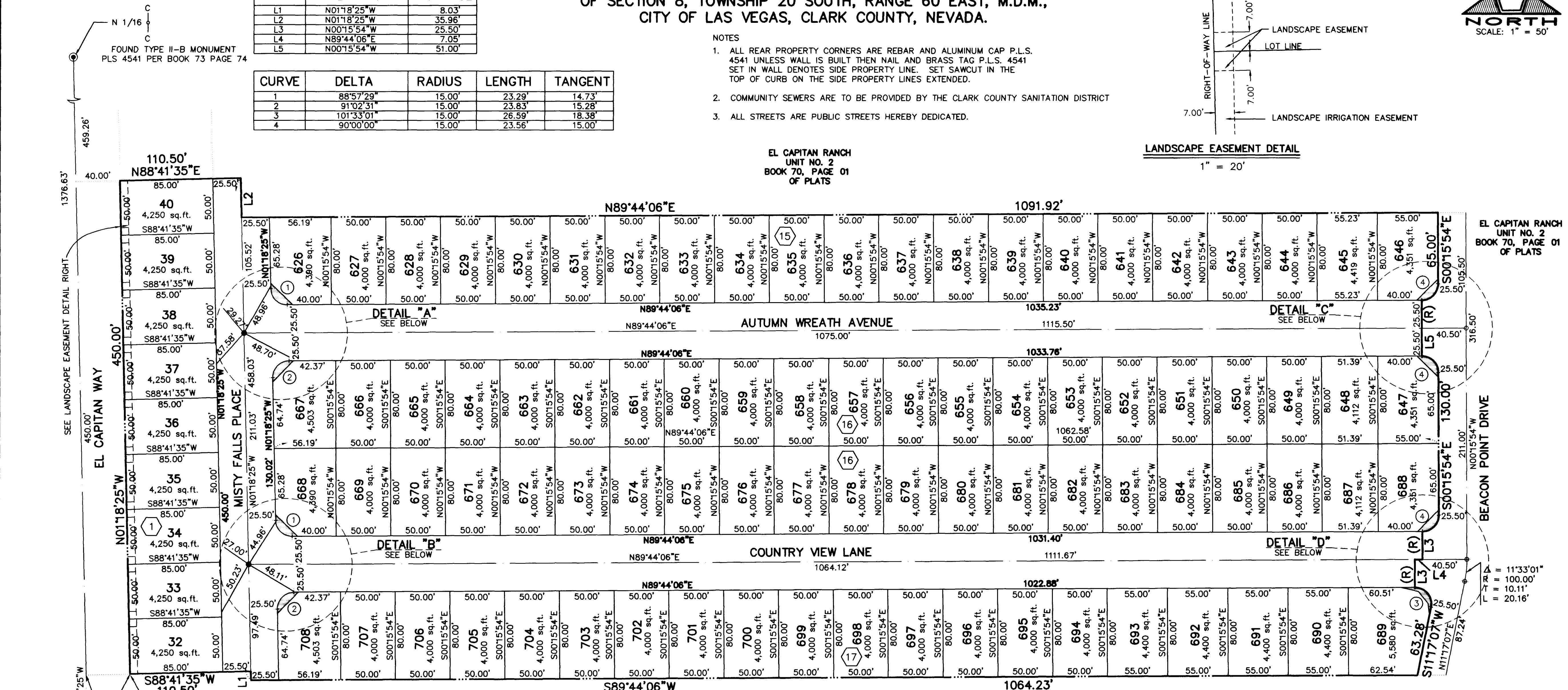
CURVE	DELTA	RADIUS	LENGTH	TANGENT
1	85°57'29"	15.00'	23.28'	14.73'
2	91°02'31"	15.00'	23.82'	15.28'
3	101°33'01"	15.00'	28.59'	18.58'
4	90°00'00"	15.00'	23.56'	15.00'

- NOTES
- ALL REAR PROPERTY CORNERS ARE REBAR AND ALUMINUM CAP P.L.S. 4541 UNLESS WALL IS BUILT THEN NAIL AND BRASS TAG P.L.S. 4541 SET IN WALL DENOTES SIDE PROPERTY LINE. SET SAWCUT IN THE TOP OF CURB ON THE SIDE PROPERTY LINES EXTENDED.
 - COMMUNITY SEWERS ARE TO BE PROVIDED BY THE CLARK COUNTY SANITATION DISTRICT
 - ALL STREETS ARE PUBLIC STREETS HEREBY DEDICATED.



EL CAPITAN RANCH
UNIT NO. 2
BOOK 70, PAGE 01
OF PLATS

LANDSCAPE EASEMENT DETAIL
1" = 20'



- LEGEND**
- SET TYPE - III MONUMENT P.L.S. 4541 (UNLESS OTHERWISE NOTED)
 - ⊙ FOUND MONUMENTATION AS SHOWN AND DESCRIBED
 - FOUND TYPE-III MONUMENT PLS4541 PER BOOK 70 PAGE 01
 - PROPERTY LINE
 - - - RIGHT OF WAY LINE
 - STREET CENTERLINE
 - ① BLOCK DESIGNATION
 - 291 LOT NUMBER
 - TOTAL NUMBER OF LOTS IN SUBDIVISION = 92
 - SIGHT VISIBILITY RESTRICTION EASEMENT

11 SEPTEMBER 97 (M)

JOB NO. 0134.0009/0006

SHEET 3 OF 3

058-4396-4

S:\0134\0009\0006\UNIT\1\11E\099#4-3.dwg Min Aug 03 08:56:54 1998 Mick1 J

