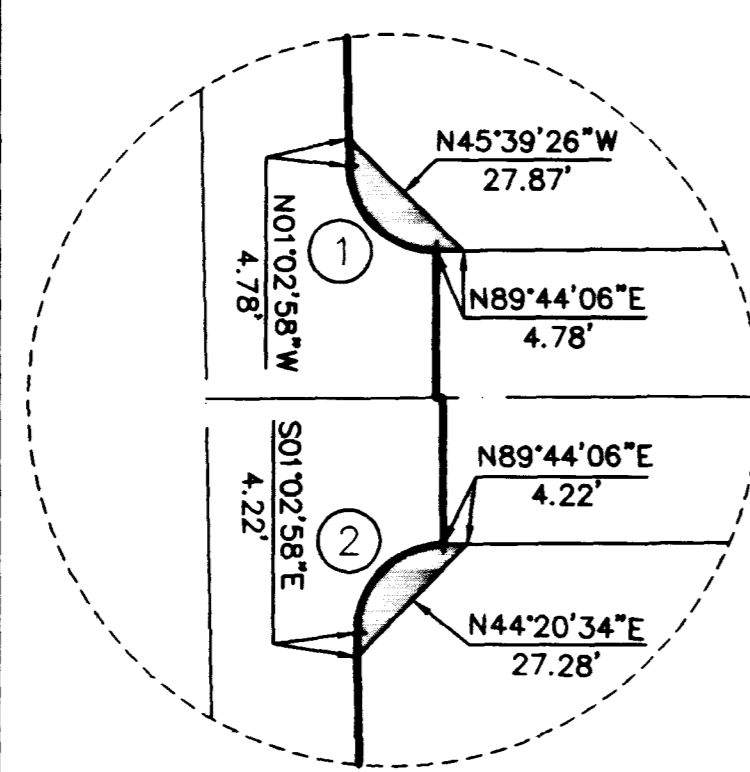


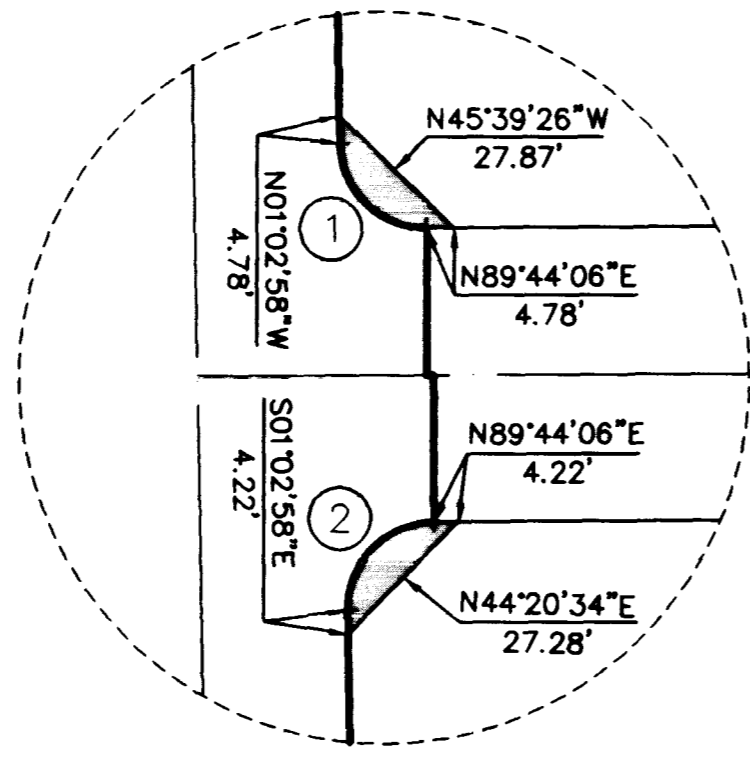
MONUMENT TIE MAP

EL CAPITAN RANCH - UNIT NO. 3

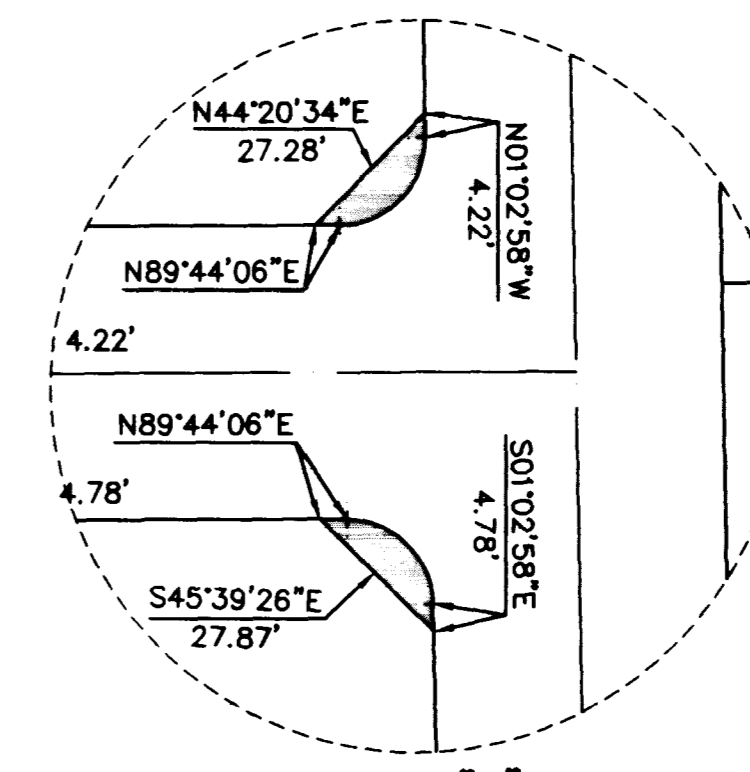
BEING A PORTION OF THE NORTHEAST QUARTER (NE 1/4)
OF SECTION 8, TOWNSHIP 20 SOUTH, RANGE 60 EAST, M.D.M.,
CITY OF LAS VEGAS, CLARK COUNTY, NEVADA.



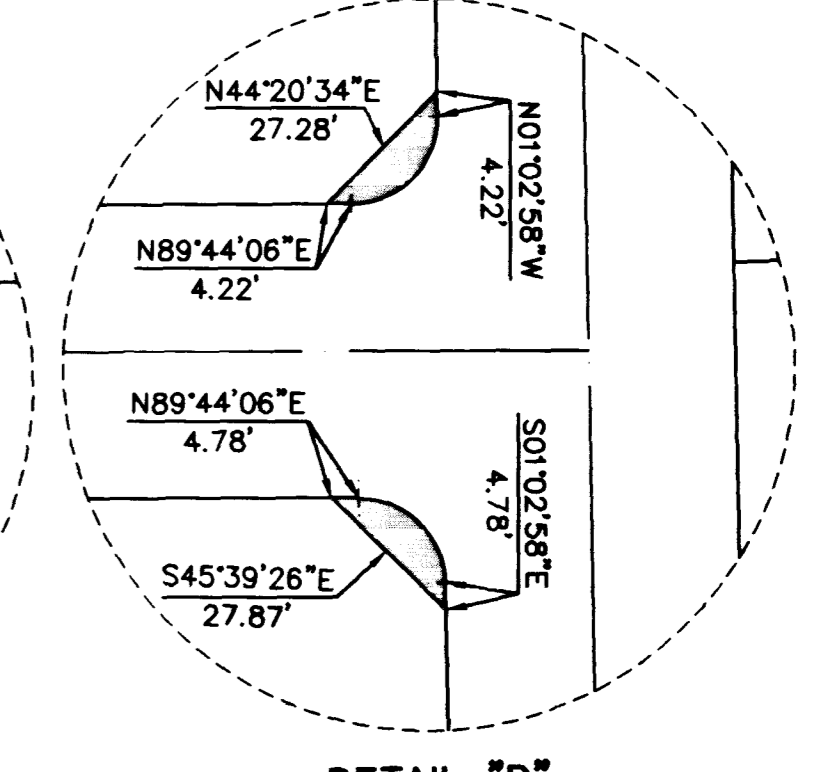
DETAIL "A"
NOT TO SCALE



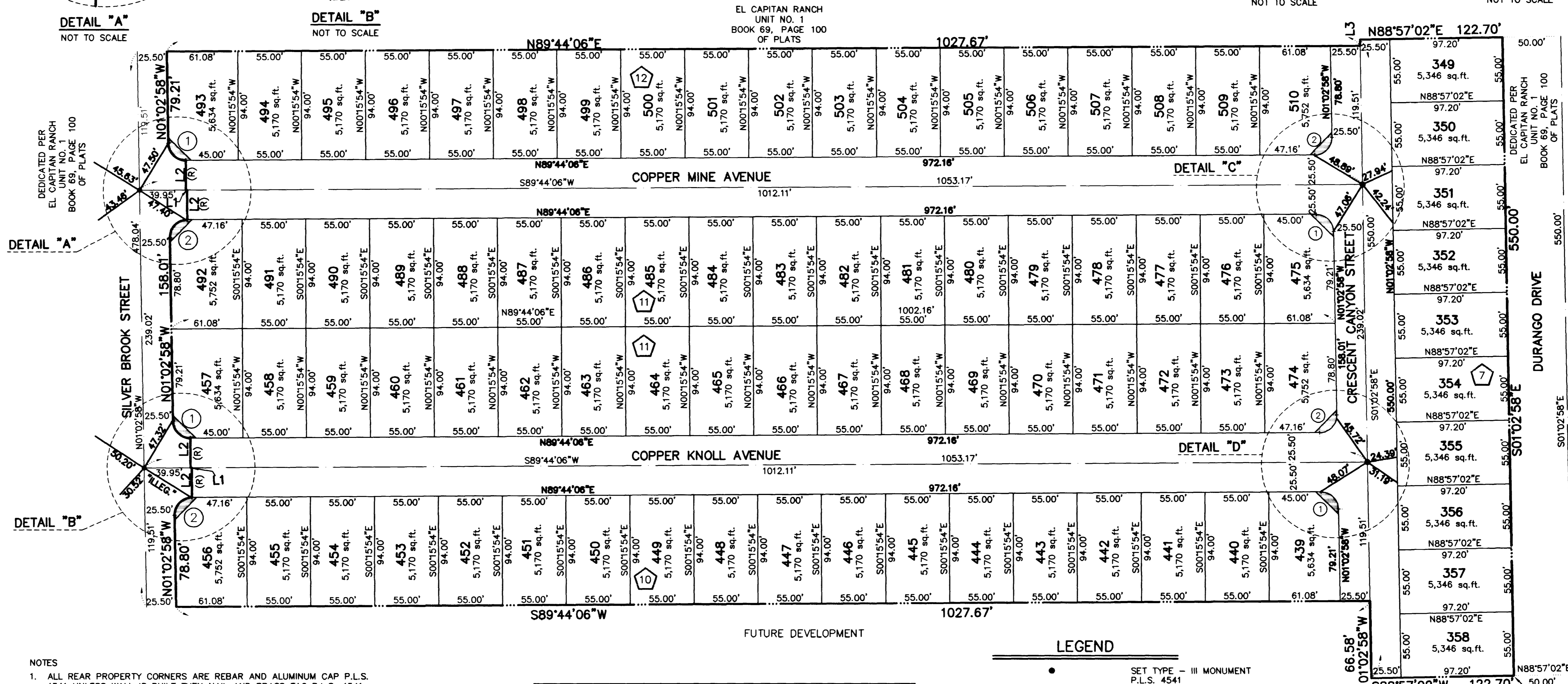
DETAIL "B"
NOT TO SCALE



DETAIL "C"
NOT TO SCALE



DETAIL "D"
NOT TO SCALE



NOTES

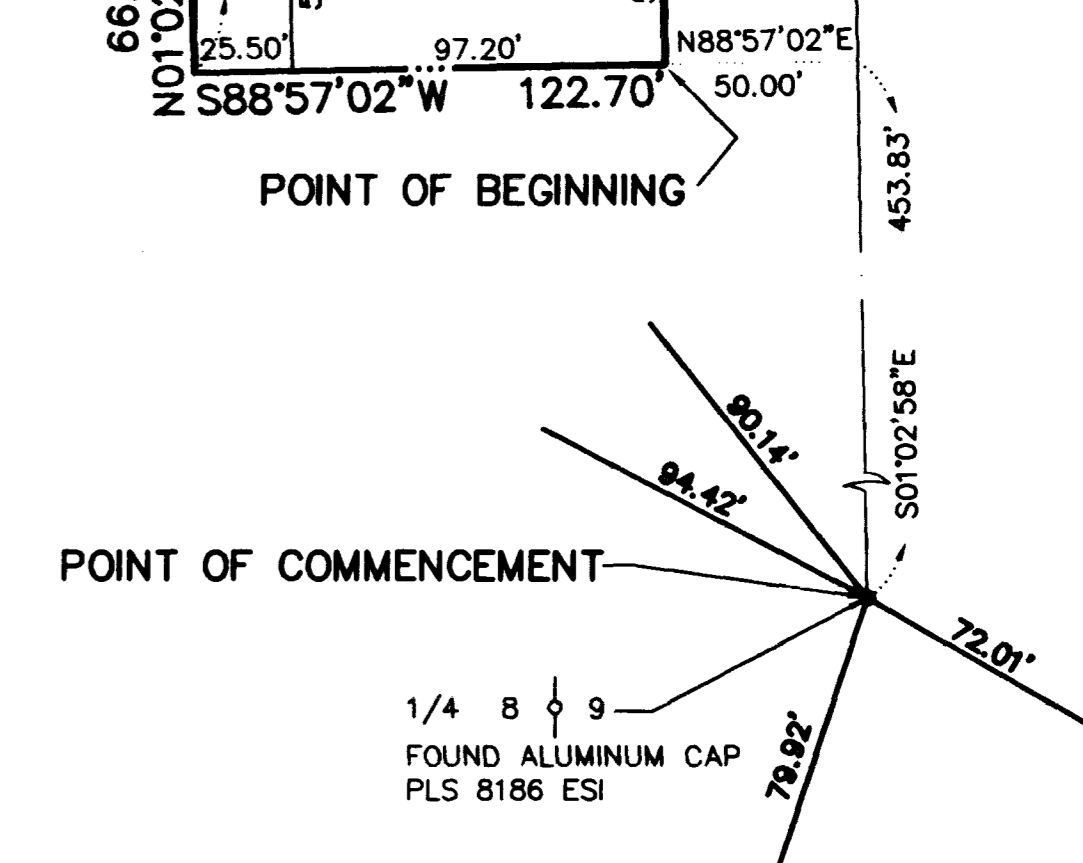
- ALL REAR PROPERTY CORNERS ARE REBAR AND ALUMINUM CAP P.L.S. 4541 UNLESS WALL IS BUILT THEN NAIL AND BRASS TAG P.L.S. 4541 SET IN WALL DENOTES SIDE PROPERTY LINE. SET SAWCUT IN THE TOP OF CURB ON THE SIDE PROPERTY LINES EXTENDED.
- COMMUNITY SEWERS ARE TO BE PROVIDED BY THE CLARK COUNTY SANITATION DISTRICT
- ALL STREETS ARE PUBLIC STREETS HEREBY DEDICATED.

CURVE	DELTA	RADIUS	LENGTH	TANGENT
1	89°12'56"	15.00'	23.36'	14.80'
2	90°47'04"	15.00'	23.77'	15.21'

LINE	BEARING	DISTANCE
L1	S89°44'06"W	1.11'
L2	N00°15'54"W (R)	25.50'
L3	S01°02'58"E	5.37'

LEGEND

- SET TYPE - III MONUMENT P.L.S. 4541 (UNLESS OTHERWISE NOTED)
- ⊙ FOUND MONUMENTATION AS SHOWN AND DESCRIBED
- FOUND TYPE - III MONUMENT PLS 4541 PER BOOK 69, PAGE 100, OF PLATS
- PROPERTY LINE
- RIGHT OF WAY LINE
- STREET CENTERLINE
- ⬡ BLOCK DESIGNATION
- 378 — LOT NUMBER TOTAL NUMBER OF LOTS IN SUBDIVISION = 82
- ⌒ SIGHT VISIBILITY RESTRICTION EASEMENT



12 DECEMBER 1997

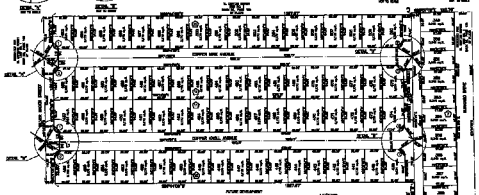
JOB NO. 0134.0009

SHEET 3 OF 3

S:\0134\0009\0006\UNIT3\11E\009P43-3 F1 Dec 12 17:04:35 1997 T.B.D.

MONUMENT TIE MAP EL CAPITAN BANCH - UNIT NO. 3

SOUTH PORTION OF THE NORTHEAST QUARTER THE 1/4
OF SECTION 3, TOWNSHIP 28 SOUTH, RANGE 93 EAST, N.D.M.,
CITY OF LAS VEGAS, CLARK COUNTY, NEVADA.



1. ALL THE PROPERTY SHOWN ON THIS MAP WAS OWNED BY J.A. ...
 2. ...
 3. ...

CURVE	BEARS	BACKS	CLONES	TRENCH
1000	1000	1000	1000	1000

LINE	DESCRIPTION	DISTANCE
---

- 100' ...
- 200' ...
- 300' ...
- 400' ...
- 500' ...
- 600' ...
- 700' ...
- 800' ...
- 900' ...
- 1000' ...



UNRECORDED COPY OF THIS MAP IS ON FILE IN THE OFFICE OF THE CLERK OF THE DISTRICT COURT, LAS VEGAS, NEVADA.