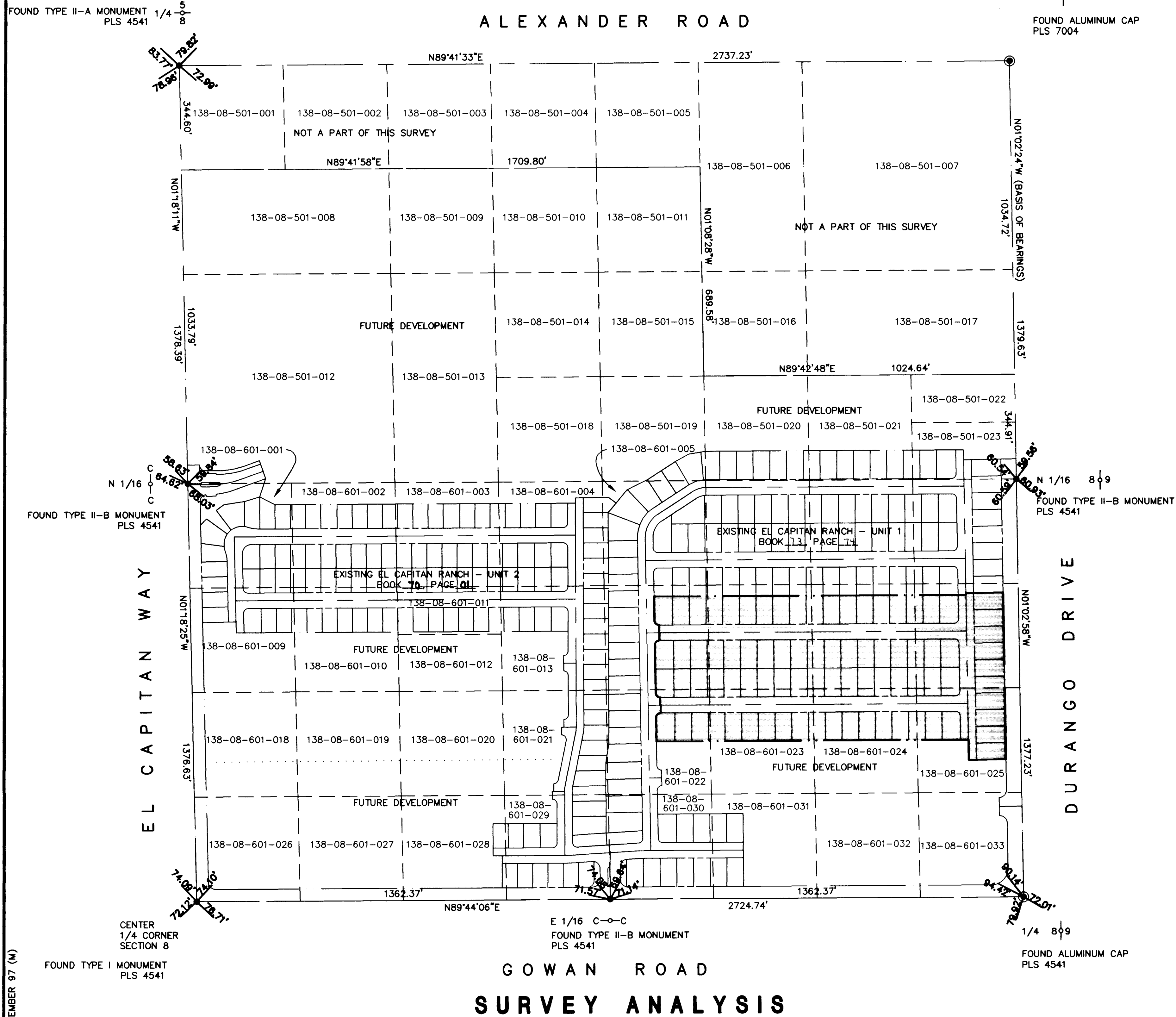
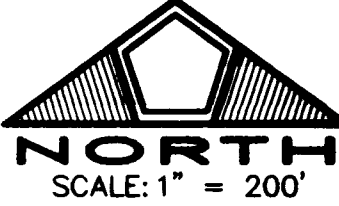


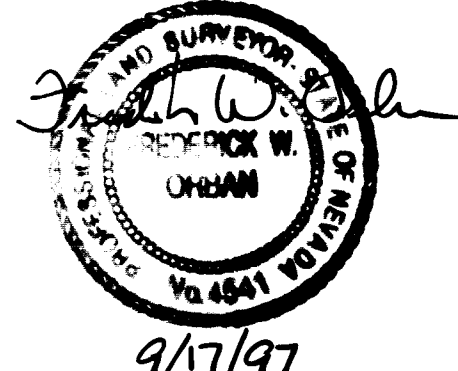
MONUMENT TIE MAP EL CAPITAN RANCH - UNIT NO. 3

BEING A PORTION OF THE NORTHEAST QUARTER (NE 1/4)
OF SECTION 8, TOWNSHIP 20 SOUTH, RANGE 60 EAST, M.D.M.,
CITY OF LAS VEGAS, CLARK COUNTY, NEVADA.



SURVEYOR'S CERTIFICATE

I, FREDERICK W. ORBAN, A PROFESSIONAL LAND SURVEYOR REGISTERED IN THE STATE OF NEVADA, DO HEREBY CERTIFY THAT THE MONUMENTS HAVE BEEN SET AND THE TIE DISTANCES ESTABLISHED AS SHOWN HEREON. THIS SURVEY WAS COMPLETED ON AUGUST 29, 1997.



FREDERICK W. ORBAN
PROFESSIONAL LAND SURVEYOR
NEVADA CERTIFICATE NO. 4541

REFERENCES

- RECORD OF SURVEY FILE 42, PAGE 15
- RECORD OF SURVEY FILE 63, PAGE 80
- RECORD OF SURVEY FILE 67, PAGE 80
- RECORD OF SURVEY FILE 69, PAGE 73
- RECORD OF SURVEY FILE 73, PAGE 4
- RECORD OF SURVEY FILE 73, PAGE 46
- PARCEL MAP FILE 5, PAGE 25
- PARCEL MAP FILE 39, PAGE 87

LEGEND

- FOUND TYPE II MONUMENT
P.L.S. 4541
(UNLESS OTHERWISE NOTED)
PER BOOK 69, PAGE 100,
OF PLATS
- ⊙ FOUND MONUMENTATION
AS SHOWN PER FILE 73,
PAGE 4 OF SURVEYS
- ▭ UNIT BOUNDARY

11 SEPTEMBER 97 (M)

CENTER
1/4 CORNER
SECTION 8
FOUND TYPE I MONUMENT
PLS 4541

**GOWAN ROAD
SURVEY ANALYSIS**

FOUND ALUMINUM CAP
PLS 4541

S:\0134\0009\0006\UNIT3\TIE\009FM3-2 Thu Sep 11 13:43:30 1997 P.D.

2740

