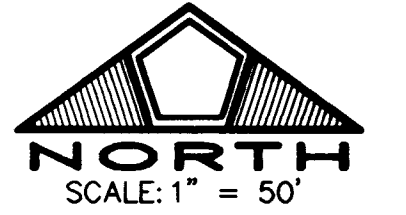
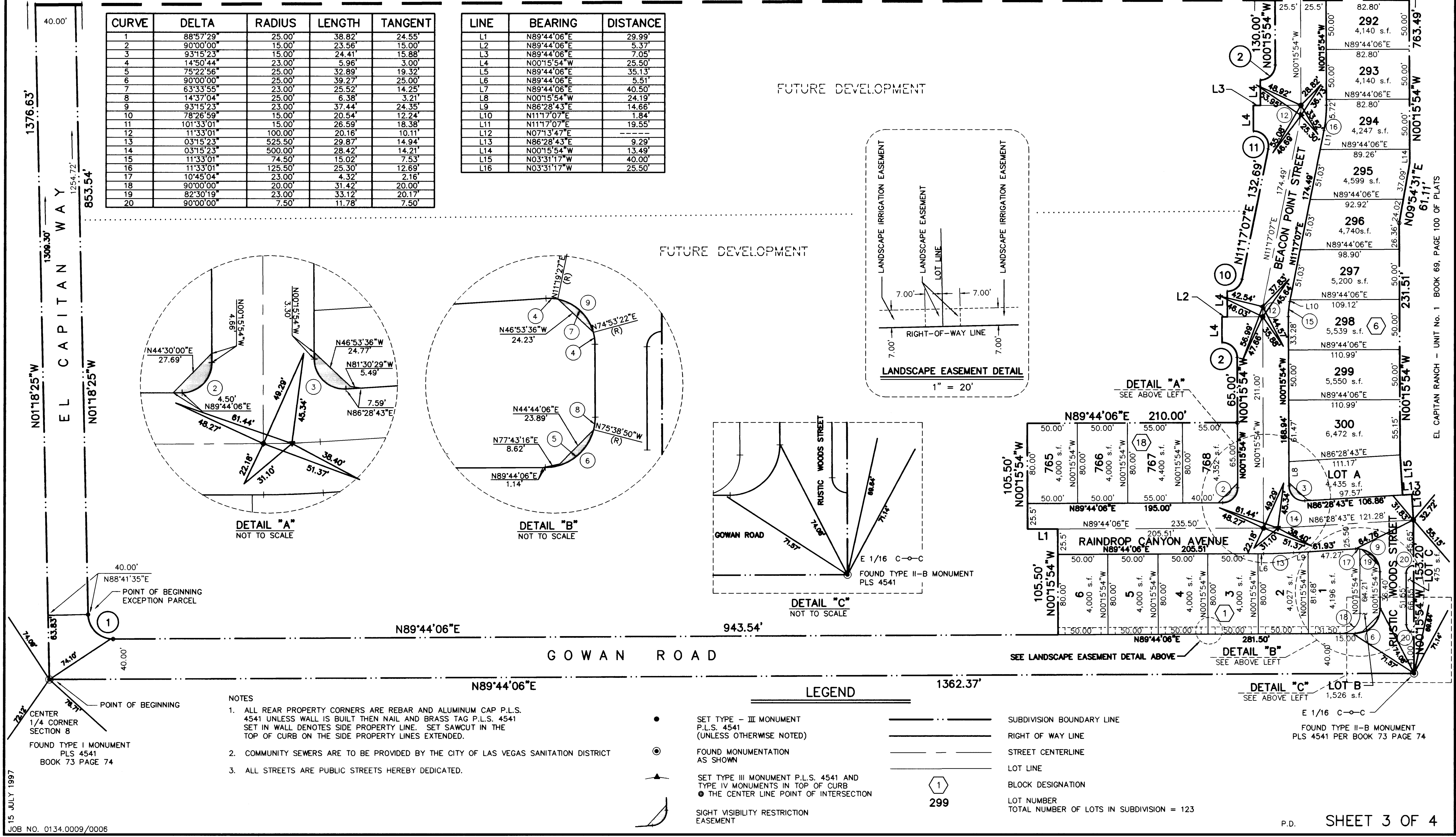


# MONUMENT TIE MAP EL CAPITAN RANCH - UNIT NO. 2

BEING A PORTION OF THE NORTHEAST QUARTER (NE 1/4)  
OF SECTION 8, TOWNSHIP 20 SOUTH, RANGE 60 EAST, M.D.M.,  
CITY OF LAS VEGAS, CLARK COUNTY, NEVADA.

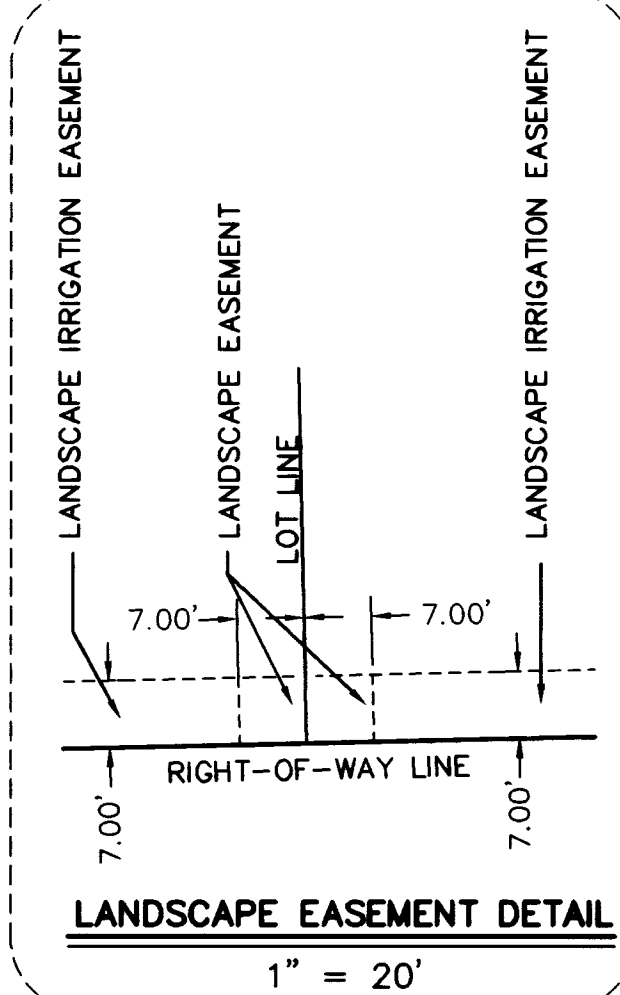
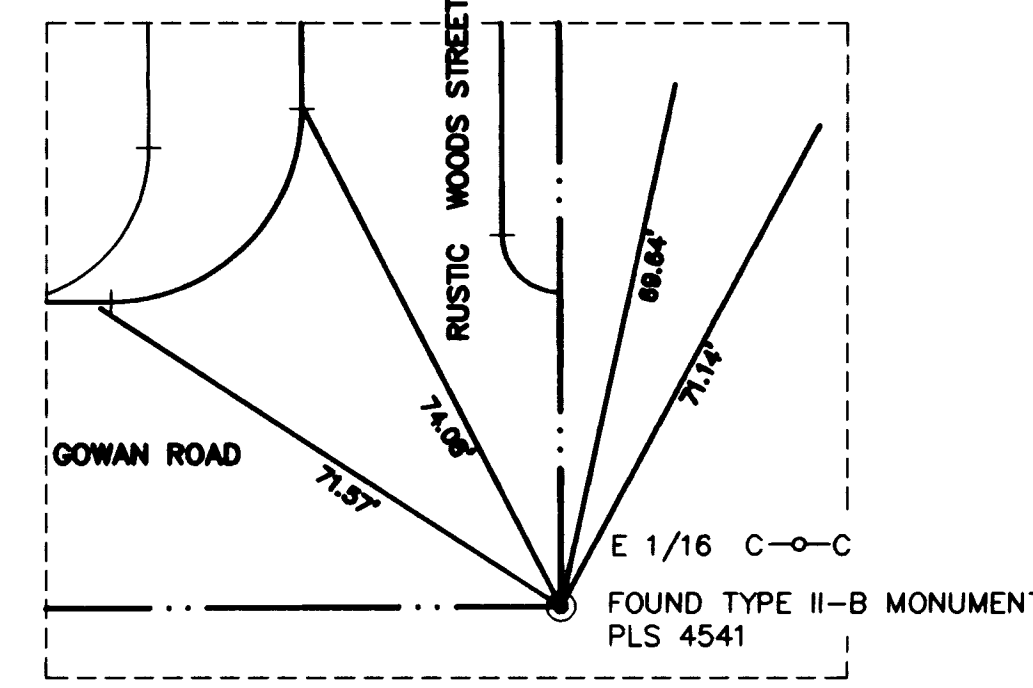
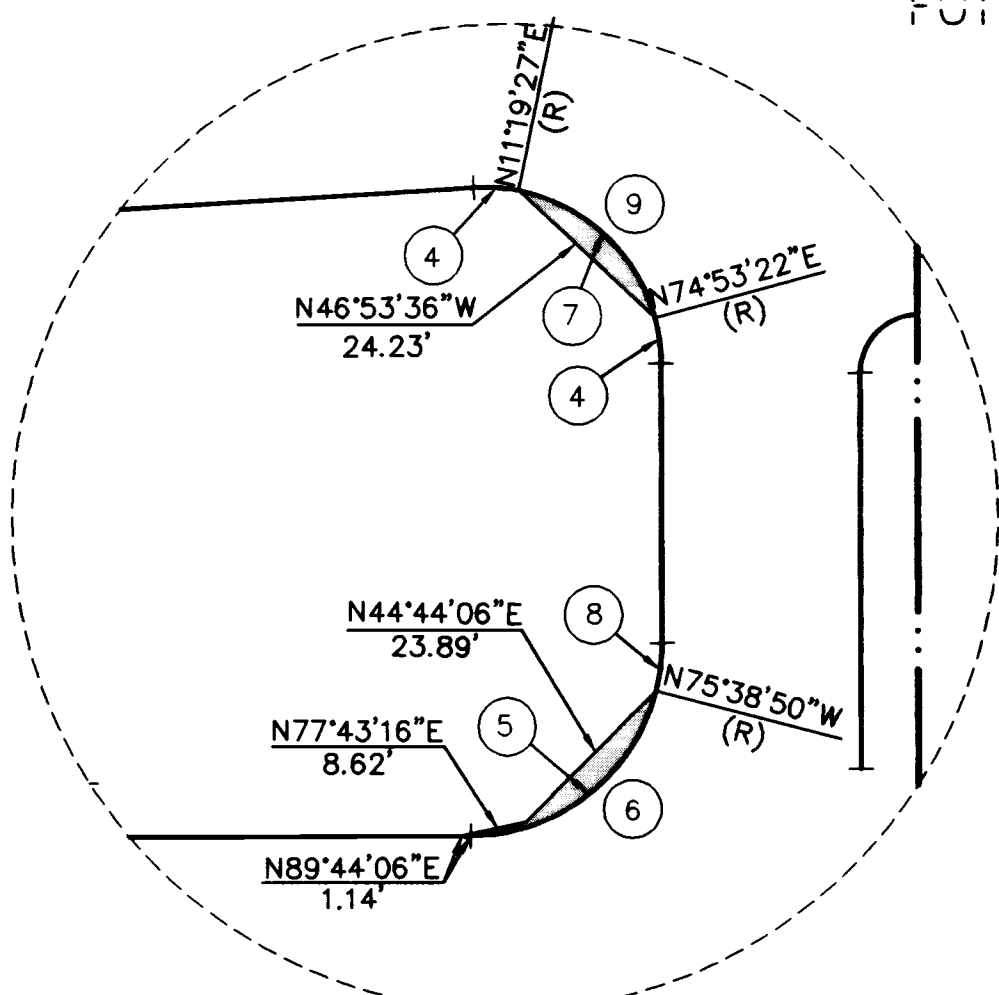
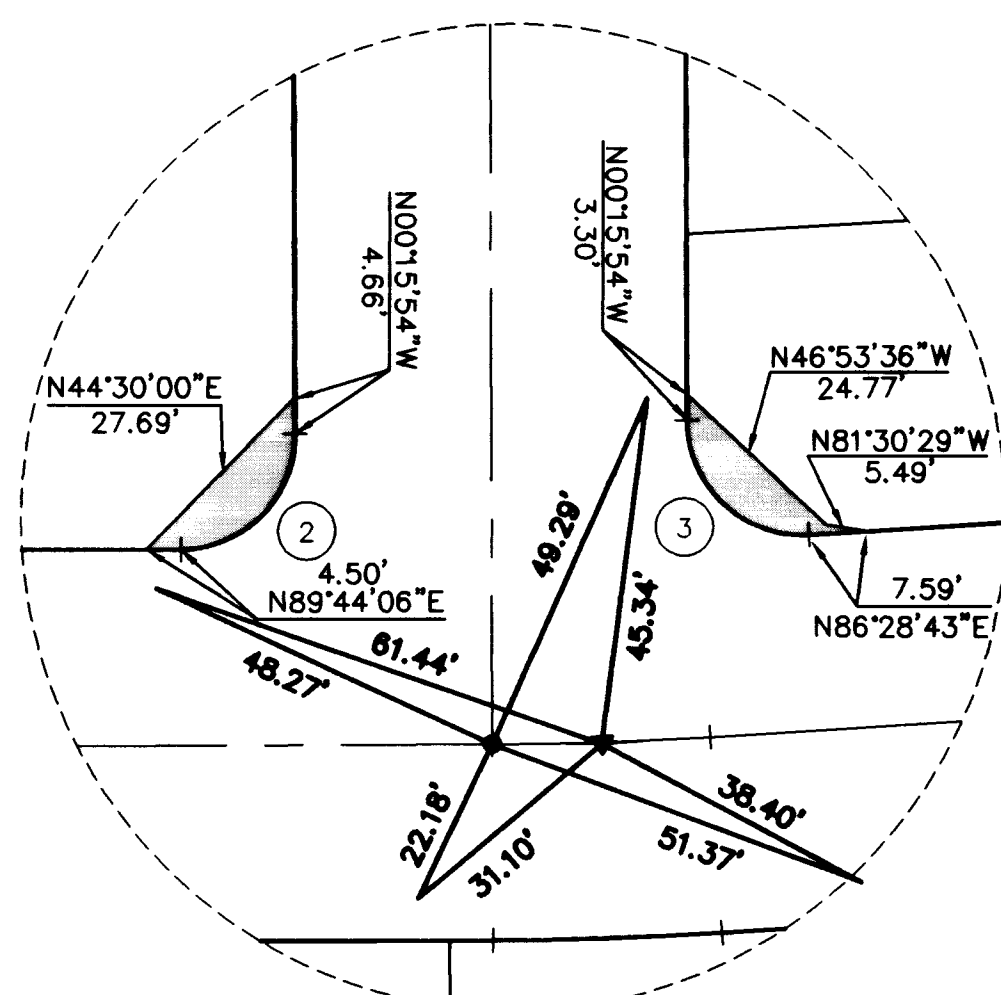


MATCHLINE - SEE SHEET 4



CURVE	DELTA	RADIUS	LENGTH	TANGENT
1	88°57'29"	25.00'	38.82'	24.55'
2	90°00'00"	15.00'	23.56'	15.00'
3	93°15'23"	15.00'	24.41'	15.88'
4	14°50'44"	23.00'	5.96'	3.00'
5	75°22'56"	25.00'	32.89'	19.32'
6	90°00'00"	25.00'	39.27'	25.00'
7	63°33'55"	23.00'	25.52'	14.25'
8	14°37'04"	25.00'	6.38'	3.21'
9	93°15'23"	23.00'	37.44'	24.35'
10	78°26'59"	15.00'	20.54'	12.24'
11	101°33'01"	15.00'	26.59'	18.38'
12	11°33'01"	100.00'	20.16'	10.11'
13	03°15'23"	525.50'	29.87'	14.94'
14	03°15'23"	500.00'	28.42'	14.21'
15	11°33'01"	74.50'	15.02'	7.53'
16	11°33'01"	125.50'	25.30'	12.69'
17	10°45'04"	23.00'	4.32'	2.16'
18	90°00'00"	20.00'	31.42'	20.00'
19	82°30'19"	23.00'	33.12'	20.17'
20	90°00'00"	7.50'	11.78'	7.50'

LINE	BEARING	DISTANCE
L1	N89°44'06"E	29.99'
L2	N89°44'06"E	5.37'
L3	N89°44'06"E	7.05'
L4	N00°15'54"W	25.50'
L5	N89°44'06"E	35.13'
L6	N89°44'06"E	5.51'
L7	N89°44'06"E	40.50'
L8	N00°15'54"W	24.19'
L9	N86°28'43"E	14.66'
L10	N11°17'07"E	1.84'
L11	N11°17'07"E	19.55'
L12	N07°13'47"E	---
L13	N86°28'43"E	9.29'
L14	N00°15'54"W	13.49'
L15	N03°31'17"W	40.00'
L16	N03°31'17"W	25.50'



- NOTES
- ALL REAR PROPERTY CORNERS ARE REBAR AND ALUMINUM CAP P.L.S. 4541 UNLESS WALL IS BUILT THEN NAIL AND BRASS TAG P.L.S. 4541 SET IN WALL DENOTES SIDE PROPERTY LINE. SET SAWCUT IN THE TOP OF CURB ON THE SIDE PROPERTY LINES EXTENDED.
  - COMMUNITY SEWERS ARE TO BE PROVIDED BY THE CITY OF LAS VEGAS SANITATION DISTRICT
  - ALL STREETS ARE PUBLIC STREETS HEREBY DEDICATED.

- LEGEND
- SET TYPE - III MONUMENT P.L.S. 4541 (UNLESS OTHERWISE NOTED)
  - FOUND MONUMENTATION AS SHOWN
  - SET TYPE III MONUMENT P.L.S. 4541 AND TYPE IV MONUMENTS IN TOP OF CURB
  - THE CENTER LINE POINT OF INTERSECTION
  - SIGHT VISIBILITY RESTRICTION EASEMENT

- SUBDIVISION BOUNDARY LINE
- RIGHT OF WAY LINE
- STREET CENTERLINE
- LOT LINE
- BLOCK DESIGNATION
- LOT NUMBER
- TOTAL NUMBER OF LOTS IN SUBDIVISION = 123

15 JULY 1997  
JOB NO. 0134.0009/0006

