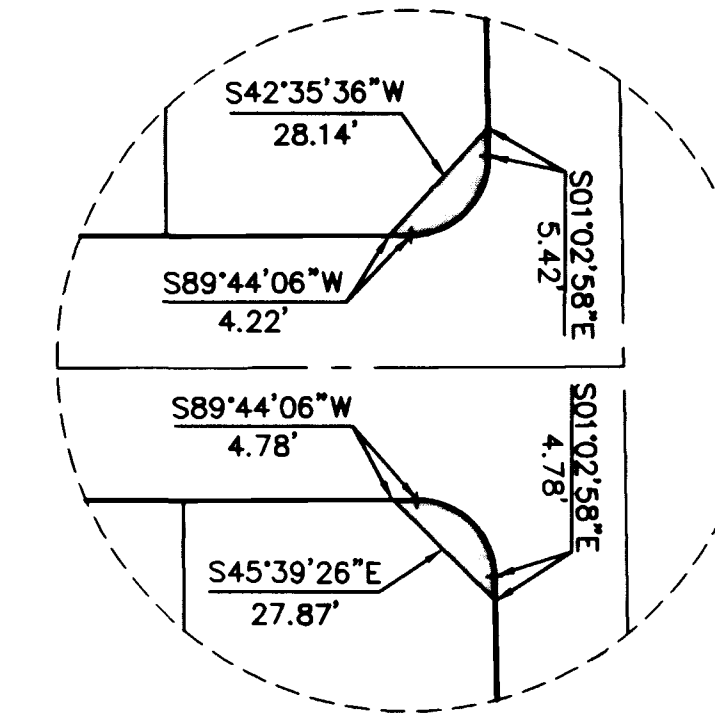


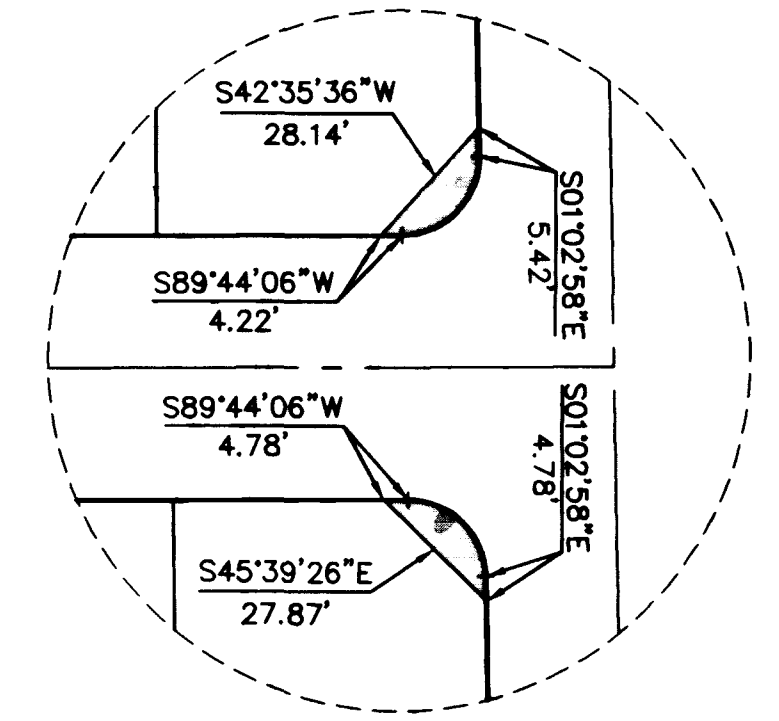
MONUMENT TIE MAP EL CAPITAN RANCH - UNIT NO. 1

BEING A PORTION OF THE NORTHEAST QUARTER (NE 1/4)
OF SECTION 8, TOWNSHIP 20 SOUTH, RANGE 60 EAST, M.D.M.,
CITY OF LAS VEGAS, CLARK COUNTY, NEVADA.

FUTURE DEVELOPMENT



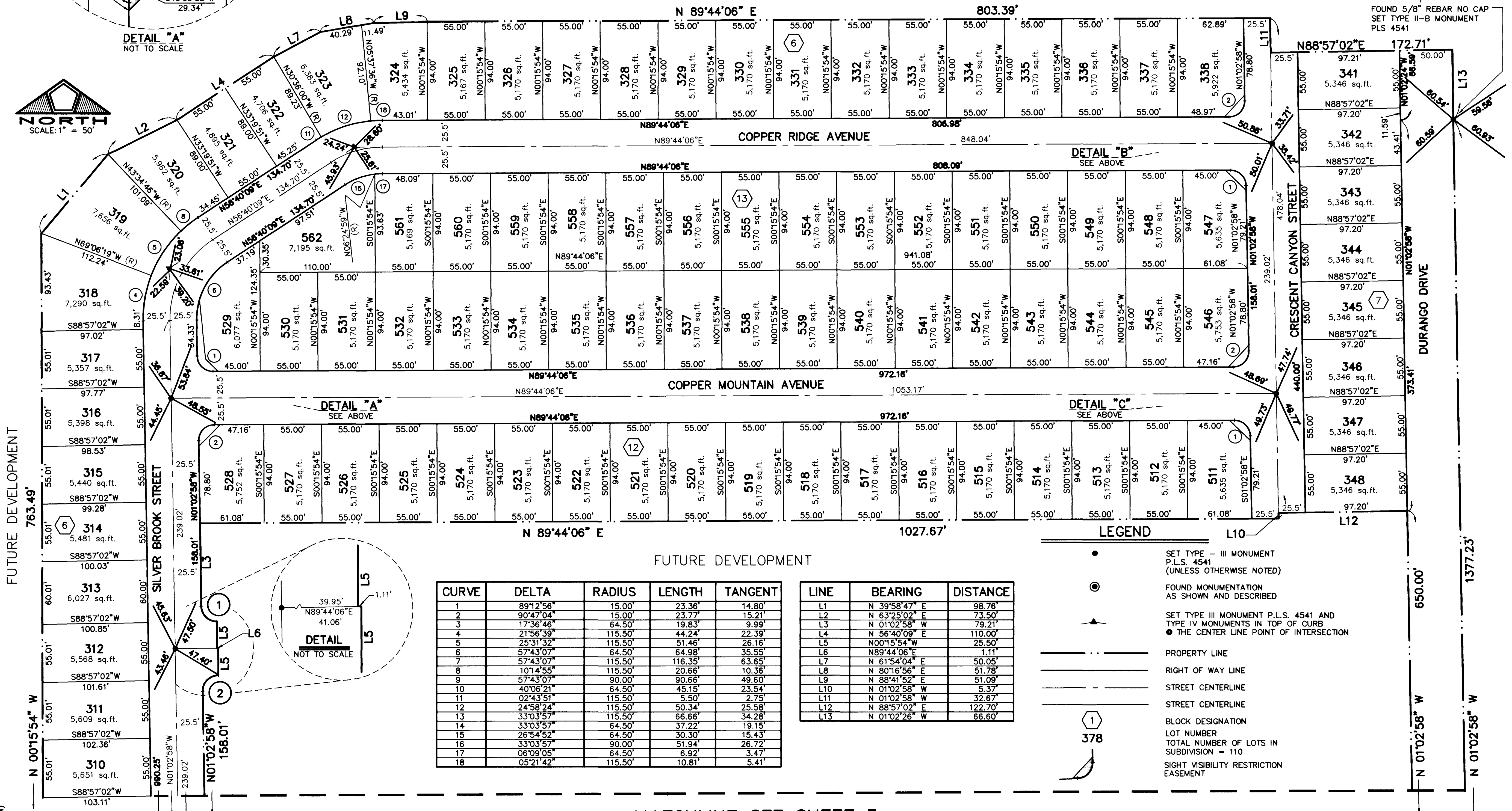
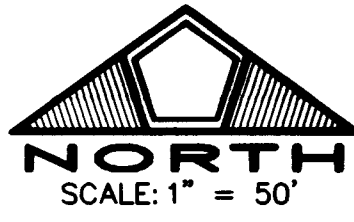
DETAIL "B"
NOT TO SCALE



DETAIL "C"
NOT TO SCALE

N 1/16 8' 0 9

FOUND 5/8" REBAR NO CAP
SET TYPE II-B MONUMENT
PLS 4541



LEGEND

- SET TYPE - III MONUMENT P.L.S. 4541 (UNLESS OTHERWISE NOTED)
- FOUND MONUMENTATION AS SHOWN AND DESCRIBED
- SET TYPE III MONUMENT P.L.S. 4541 AND TYPE IV MONUMENTS IN TOP OF CURB
- THE CENTER LINE POINT OF INTERSECTION
- PROPERTY LINE
- RIGHT OF WAY LINE
- STREET CENTERLINE
- STREET CENTERLINE
- ① BLOCK DESIGNATION
- 378 LOT NUMBER
- TOTAL NUMBER OF LOTS IN SUBDIVISION = 110
- SIGHT VISIBILITY RESTRICTION EASEMENT

CURVE	DELTA	RADIUS	LENGTH	TANGENT
1	89°12'56"	15.00'	23.36'	14.80'
2	90°47'04"	15.00'	23.77'	15.21'
3	17°36'46"	64.50'	19.83'	9.99'
4	21°56'39"	115.50'	44.24'	22.39'
5	25°31'32"	115.50'	51.46'	26.16'
6	57°43'07"	64.50'	64.98'	35.55'
7	57°43'07"	115.50'	116.35'	63.65'
8	101°4'55"	115.50'	20.66'	10.36'
9	57°43'07"	90.00'	90.66'	49.60'
10	40°06'21"	64.50'	45.15'	23.54'
11	02°43'51"	115.50'	5.50'	2.75'
12	24°58'24"	115.50'	50.34'	25.58'
13	33°03'57"	115.50'	66.66'	34.28'
14	33°03'57"	64.50'	37.22'	19.15'
15	26°54'52"	64.50'	30.30'	15.43'
16	33°03'57"	90.00'	51.94'	26.72'
17	06°09'05"	64.50'	6.92'	3.47'
18	05°21'42"	115.50'	10.81'	5.41'

LINE	BEARING	DISTANCE
L1	N 39°58'47" E	98.76'
L2	N 63°25'02" E	73.50'
L3	N 01°02'58" W	79.21'
L4	N 56°40'08" E	110.00'
L5	N00°15'54" W	25.50'
L6	N89°44'06" E	1.11'
L7	N 61°54'04" E	50.05'
L8	N 80°16'56" E	51.78'
L9	N 88°41'52" E	51.09'
L10	N 01°02'58" W	5.37'
L11	N 01°02'58" W	32.67'
L12	N 88°57'02" E	122.70'
L13	N 01°02'26" W	66.60'

- NOTES
- ALL REAR PROPERTY CORNERS ARE REBAR AND ALUMINUM CAP P.L.S. 4541 UNLESS WALL IS BUILT THEN NAIL AND BRASS TAG P.L.S. 4541 SET IN WALL DENOTES SIDE PROPERTY LINE. SET SAWCUT IN THE TOP OF CURB ON THE SIDE PROPERTY LINES EXTENDED.
 - COMMUNITY SEWERS ARE TO BE PROVIDED BY THE CITY OF LAS VEGAS SANITATION DISTRICT
 - ALL STREETS ARE PUBLIC STREETS HEREBY DEDICATED.

MATCHLINE SEE SHEET 3

11 SEPTEMBER 97 (M)

JOB NO. 0134.0009/0006

P.D. SHEET 4 OF 4

BOOK 73 PAGE 74

058-4396-1

