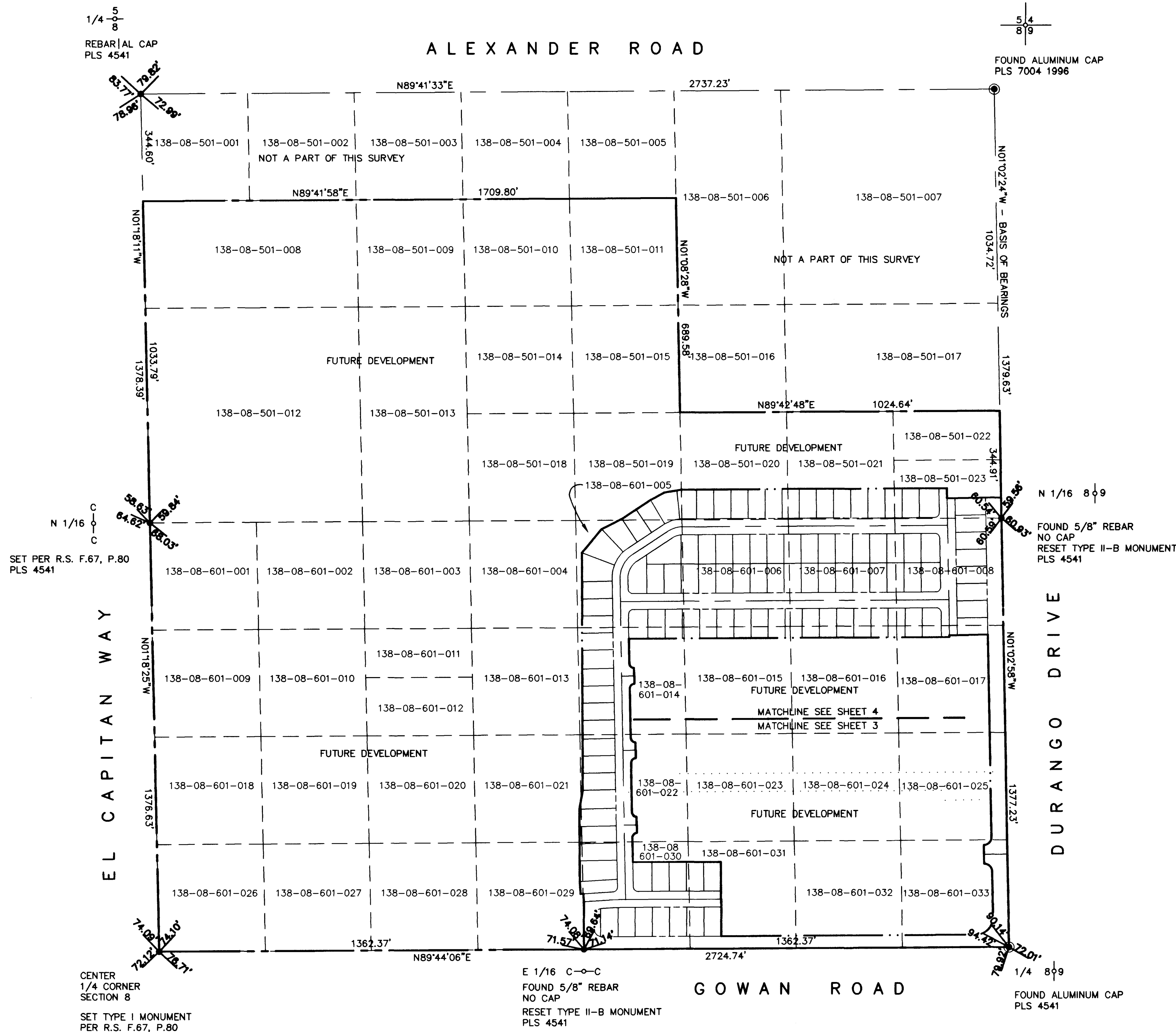


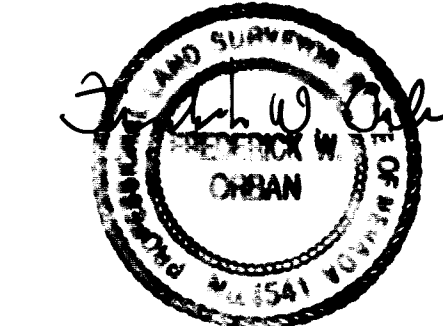
MONUMENT TIE MAP EL CAPITAN RANCH - UNIT NO. 1

BEING A PORTION OF THE NORTHEAST QUARTER (NE 1/4)
OF SECTION 8, TOWNSHIP 20 SOUTH, RANGE 60 EAST, M.D.M.,
CITY OF LAS VEGAS, CLARK COUNTY, NEVADA.



SURVEYOR'S CERTIFICATE

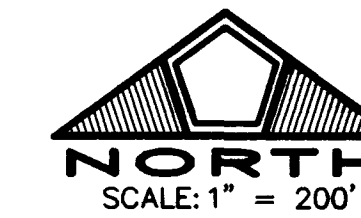
I, FREDERICK W. ORBAN, A PROFESSIONAL LAND SURVEYOR REGISTERED IN THE STATE OF NEVADA, DO HEREBY CERTIFY THAT THE MONUMENTS HAVE BEEN SET AND THE TIE DISTANCES ESTABLISHED AS SHOWN HEREON. THIS SURVEY WAS COMPLETED ON AUGUST 29, 1997.



FREDERICK W. ORBAN
PROFESSIONAL LAND SURVEYOR
NEVADA CERTIFICATE NO. 4541

REFERENCES

- RECORD OF SURVEY FILE 42, PAGE 15
- RECORD OF SURVEY FILE 63, PAGE 80
- RECORD OF SURVEY FILE 67, PAGE 80
- RECORD OF SURVEY FILE 69, PAGE 73
- RECORD OF SURVEY FILE 73, PAGE 4
- RECORD OF SURVEY FILE 73, PAGE 46
- PARCEL MAP FILE 5, PAGE 25
- PARCEL MAP FILE 39, PAGE 87



LEGEND

- SET TYPE III MONUMENT P.L.S. 4541, 1-1/2" ALUMINUM CAP ON 5/8" REBAR WITH TYPE IV REFERENCE MONUMENTS P.L.S. 4541, 2" ALUMINUM CAP (UNLESS OTHERWISE NOTED)
- ⊙ FOUND MONUMENTATION AS SHOWN PER FILE 73, PAGE 4 OF SURVEYS
- ▭ UNIT BOUNDARY

SURVEY ANALYSIS

CENTER
1/4 CORNER
SECTION 8
SET TYPE I MONUMENT
PER R.S. F.67, P.80

E 1/16 C—C
FOUND 5/8" REBAR
NO CAP
RESET TYPE II-B MONUMENT
PLS 4541

FOUND ALUMINUM CAP
PLS 4541

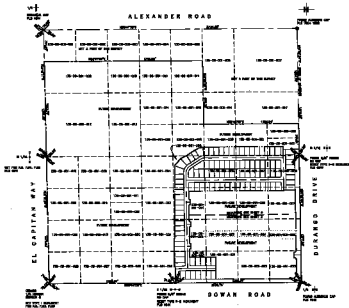
15 JULY 1997

JOB NO. 0134.0009/0006

12983

MONUMENT TIE MAP EL CAPITAN RANCH - UNIT NO. 1

SHOWS A PORTION OF THE NORTHEAST QUARTER (NE 1/4) OF SECTION 8, TOWNSHIP 20 SOUTH, RANGE 80 EAST, N.M.S., CITY OF LAS VEGAS, CLARK COUNTY, NEVADA.



SURVEY ANALYSIS

REMARKS CONCERNING

1. THIS MAP IS A REPRODUCTION OF THE ORIGINAL SURVEY MAP AND IS NOT TO BE USED AS A BASIS FOR ANY OTHER SURVEY OR AS A BASIS FOR ANY OTHER PURPOSE.



DATE OF SURVEY
1968

REFERENCE

SECTION 8, TOWNSHIP 20 SOUTH, RANGE 80 EAST, N.M.S., CITY OF LAS VEGAS, CLARK COUNTY, NEVADA.



LEGEND

- MONUMENT TIE POINT
- MONUMENT TIE POINT
- MONUMENT TIE POINT