

950511

01102

DURANGO TRAILS TOWNHOMES - UNIT 1

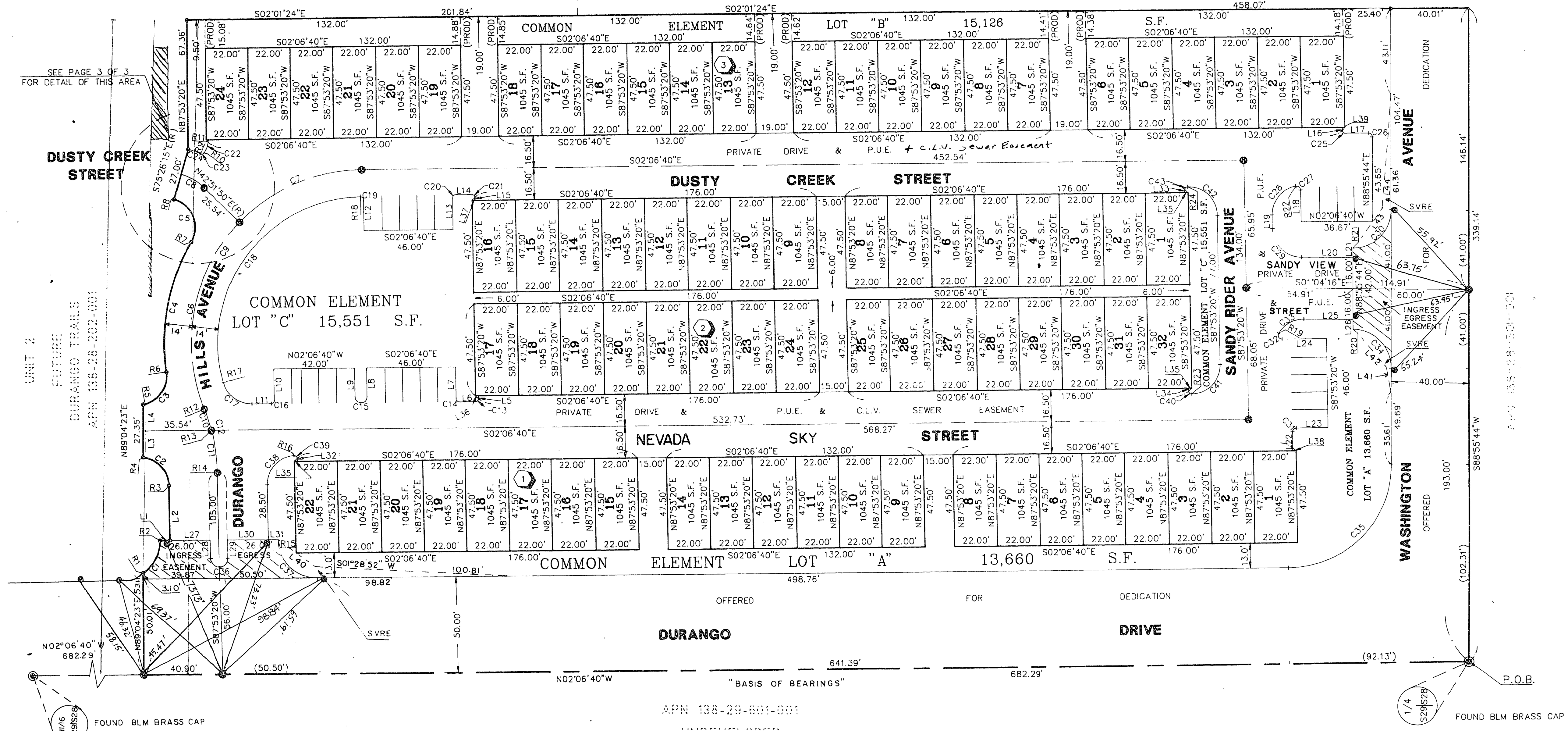
(A COMMON INTEREST OWNERSHIP COMMUNITY)

A PORTION OF THE WEST HALF (W 1/2) OF THE SOUTHWEST QUARTER (SW 1/4) OF THE SOUTHWEST QUARTER (SW 1/4) OF THE NORTHWEST QUARTER (NW 1/4) OF SECTION 28, TOWNSHIP 20 SOUTH, RANGE 60 EAST, M.D.M., CITY OF LAS VEGAS, CLARK COUNTY, NEVADA

MONUMENTATION TIE MAP

RIDGEVIEW WEST II-UNIT 9
PLAT: BOOK 56, PAGE 28

RIDGEVIEW WEST II-UNIT 10
PLAT: BOOK 57, PAGE 6



SCALE: 1" = 30'

I, STEPHEN P. GURLIDES, A PROFESSIONAL LAND SURVEYOR IN THE STATE OF NEVADA, DO HEREBY CERTIFY THAT THE MONUMENTS HAVE BEEN SET AND THE TIE DISTANCE ESTABLISHED AS SHOWN HEREON. THIS SURVEY WAS COMPLETED ON

STEPHEN P. GURLIDES
NEVADA CERTIFICATION NO. 9105

NOTES:

- PURSUANT TO NRS 278.371, ALL REAR LOT CORNERS SHALL BE SET WITH A NAIL AND BRASS TAG PLS. 8421 ON BLOCK WALL AND ALL FRONT OR SIDE LOT CORNERS ADJOINING RIGHT-OF-WAY SHALL BE MARKED BY THE SAWCUTTING OF THE BACK OF CURBS ON THE PROLONGATION OF THE PROPERTY LINES.
- DIRECT VEHICULAR ACCESS TO DURANGO DRIVE AND WASHINGTON AVENUE FROM ABUTTING LOTS IS PROHIBITED.
- SEE SHEET 3 OF 3 FOR CURVE TABLE, LINE TABLE AND RADIAL LINE TABLE.

LEGEND

- P.O.B. POINT OF BEGINNING
- 15 LOT NUMBER / RESIDENTIAL = 78
COMMON ELEMENT LOT = 3
TOTAL = 81
- (B) BLOCK NUMBER
- R1 RADIAL LINE NUMBER
- L3 COURSE NUMBER
- C2 CURVE NUMBER
- (M) FOUND MONUMENT AS DESCRIBED
- (S) SET TYPE III MONUMENT - AL. CAP "VTN PLS 9105"
- (N) SET NAIL & BRASS TAG "PLS 8421" OR SAWCUT TOP OF CURB ON PROLONGATION OF PROPERTY LINES, PER NOTE 1
- P.U.E. PUBLIC UTILITY EASEMENT
- S.F. SQUARE FEET
- PROD PRODUCED LINE
- SVRE SIGHT VISIBILITY RESTRICTION EASEMENT
- (//) INGRESS/EGRESS EASEMENT

ACT	DATE	BY	REVISION

W.O. 4706
SHEET 2 OF 3
D.S./T.H.

12-6-6 BOOK 67, Page 80