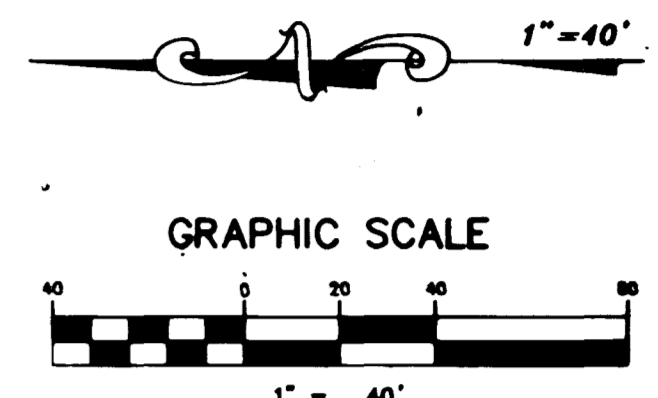
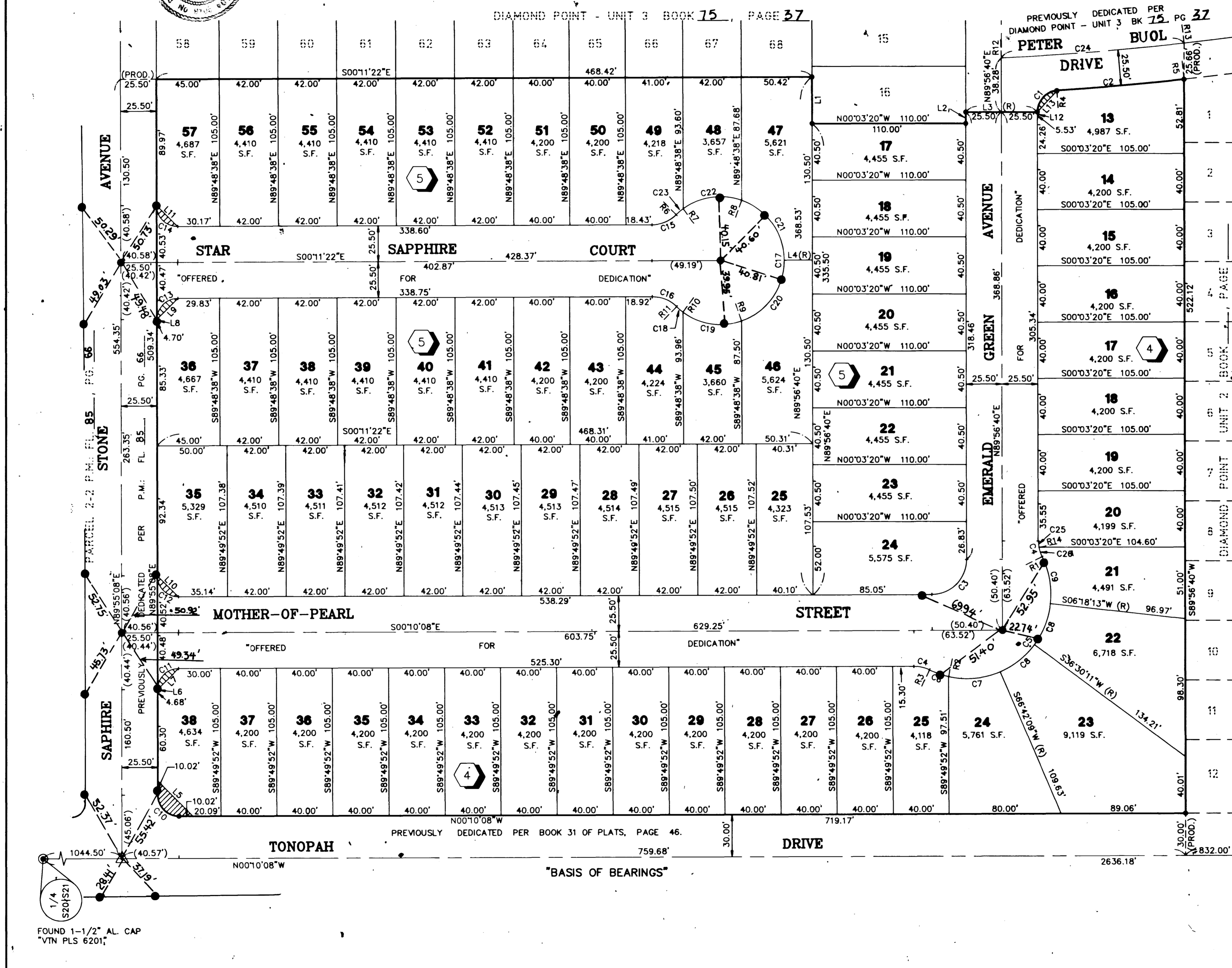
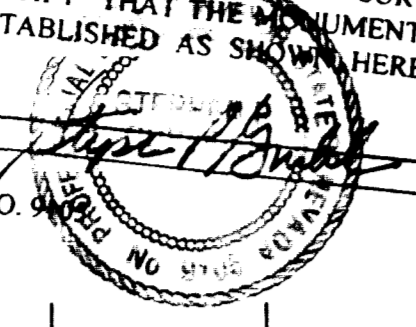


DIAMOND POINTE - UNIT 4

BEING PARCEL 2-4 OF PARCEL MAP: FILE 85, PAGE 66
 A PORTION OF THE WEST HALF (W 1/2) OF THE SOUTHWEST QUARTER (SW 1/4) OF
 OF SECTION 21, TOWNSHIP 20 SOUTH, RANGE 61 EAST, M.D.M., CITY OF LAS VEGAS, CLARK COUNTY, NEVADA.
MONUMENTATION TIE MAP

I, STEPHEN P. GURLIDES, A PROFESSIONAL LAND SURVEYOR IN THE STATE OF NEVADA, DO HEREBY CERTIFY THAT THE MONUMENTS HAVE BEEN SET AND THE TIE DISTANCES ESTABLISHED AS SHOWN HEREON. THIS SURVEY WAS COMPLETED ON:

STEPHEN P. GURLIDES
 NEVADA CERTIFICATION NO. 00000000



NOTES:

- ALL REAR LOT CORNERS SHALL BE SET WITH A NAIL AND BRASS TAG P.L.S. 9105 ON BLOCK WALL AND ALL FRONT OF SIDE LOT CORNERS ADJOINING RIGHT-OF-WAY SHALL BE MARKED BY THE SAWCUTTING OF THE BACK OF CURBS ON THE PROLONGATION OF THE PROPERTY LINES.
- SEE SHEET 3 FOR SURVEY ANALYSIS, CURVE, COURSE, AND RADIAL LINE TABLES.

- LEGEND**
- BOUNDARY LINE
 - LOT LINE
 - STREET CENTERLINE
 - SET NAIL & BRASS TAG "VTN PLS 9105" OR SAWCUT TOP OF CURB ON THE PROLONGATION OF PROPERTY LINES PER NOTE 1 THIS SHEET.
 - SET TYPE III MONUMENT AL CAP "VTN PLS 9105"
 - FOUND MONUMENT AS DESCRIBED
 - FOUND TYPE III MONUMENT "VTN PLS 9105" (PER P.M.: FL 85, PG. 66.)
 - LOT NUMBER / TOTAL LOTS = 67
 - C25 CURVE NUMBER
 - L22 COURSE NUMBER
 - R19 RADIAL LINE NUMBER
 - (R) RADIAL
 - (13) BLOCK NUMBER
 - S.F. SQUARE FEET
 - (PROD.) PRODUCED LINE
 - "SIGHT VISIBILITY RESTRICTION EASEMENT AREA" - ARE PUBLIC EASEMENTS AND AS SUCH THE HEIGHT OF LANDSCAPING OR PHYSICAL IMPROVEMENTS WITHIN THE EASEMENT AREA ARE RESTRICTED TO A MAXIMUM HEIGHT OF 30 INCHES.

ACT	DATE	BY	REVISION
1	4/9/96	VCL	NORTH BOUNDARY LINE, RADIUS • BLK 4 LT 38

W.O. 4993-4
 SHEET 2 OF 3
 va

BOOK 77 PAGE 53
 058-4378-4

5235

