

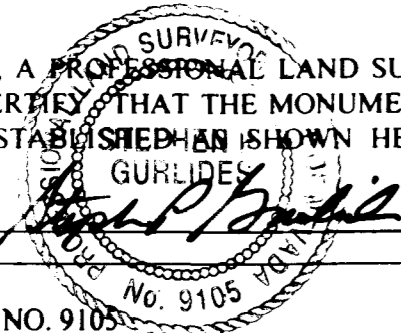
96080/

# DIAMOND POINTE UNIT - 3

BEING PARCEL 2-3 OF PARCEL MAP: FILE 85, PAGE 66  
 A PORTION OF THE WEST HALF (W 1/2) OF THE SOUTHWEST QUARTER (SW 1/4) OF  
 OF SECTION 21, TOWNSHIP 20 SOUTH, RANGE 61 EAST, M.D.M., CITY OF LAS VEGAS, CLARK COUNTY, NEVADA.

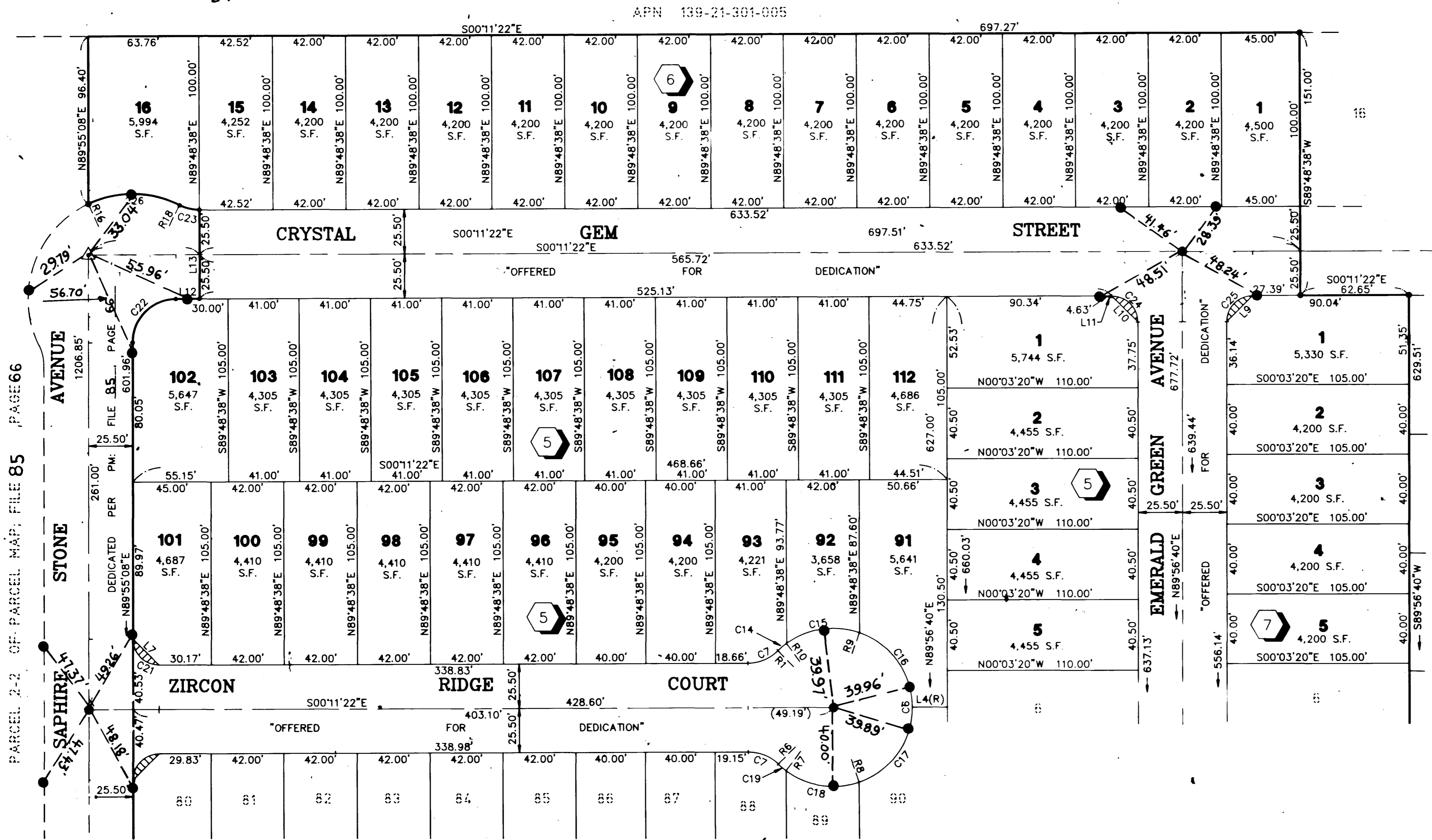
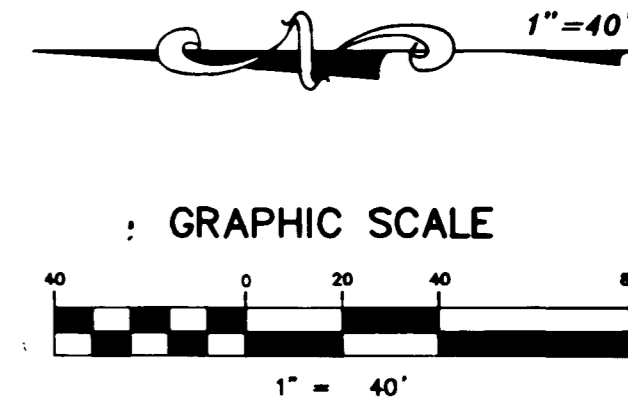
## MONUMENTATION TIE MAP

I, STEPHEN P. GURLIDES, A PROFESSIONAL LAND SURVEYOR IN THE STATE OF NEVADA, DO HEREBY CERTIFY THAT THE MONUMENTS HAVE BEEN SET AND THE TIE DISTANCES ESTABLISHED AS SHOWN HEREON. THIS SURVEY WAS COMPLETED ON:



STEPHEN P. GURLIDES  
 NEVADA CERTIFICATION NO. 9105

2-9-99



SEE SHEET 2 FOR CONTINUATION

### NOTES:

- ALL REAR LOT CORNERS SHALL BE SET WITH A NAIL AND BRASS TAG P.L.S. 9105 ON BLOCK WALL AND ALL FRONT OF SIDE LOT CORNERS ADJOINING RIGHT-OF-WAY SHALL BE MARKED BY THE SAWCUTTING OF THE BACK OF CURBS ON THE PROLONGATION OF THE PROPERTY LINES.
- SEE SHEET 4 FOR SURVEY ANALYSIS, CURVE, COURSE, AND RADIAL LINE TABLES

### LEGEND

- APN ASSESSOR'S PARCEL NUMBER
- BOUNDARY LINE
- LOT LINE
- STREET CENTERLINE
- FOUND TYPE III MONUMENT "VTN PLS 9105" (PER P.M.: FL, PG)
- SET NAIL & BRASS TAG "VTN PLS 9105" OR SAWCUT TOP OF CURB ON THE PROLONGATION OF PROPERTY LINES PER NOTE 1 THIS SHEET.
- SET TYPE III MONUMENT AL. CAP "VTN PLS 9105"
- FOUND MONUMENT AS DESCRIBED
- 17 LOT NUMBER / TOTAL LOTS = 101
- C25 CURVE NUMBER
- L22 COURSE NUMBER
- R19 RADIAL LINE NUMBER
- (R) RADIAL
- 13 BLOCK NUMBER
- S.F. SQUARE FEET
- "SIGHT VISIBILITY RESTRICTION EASEMENT AREA" - ARE PUBLIC EASEMENTS AND AS SUCH THE HEIGHT OF LANDSCAPING OR PHYSICAL IMPROVEMENTS WITHIN THE EASEMENT AREA ARE RESTRICTED TO A MAXIMUM HEIGHT OF 30 INCHES.

ACT	DATE	BY	REVISION
1	4/9/96	VCL	BOUNDARY LINE • BLK 6, LOT 16 REVISED •

W.O. 4993-3  
 SHEET 3 OF 4  
 VCL

14153

058-4378-3

BOOK 75 PAGE 37

