

# DIAMOND POINTE - UNIT 3

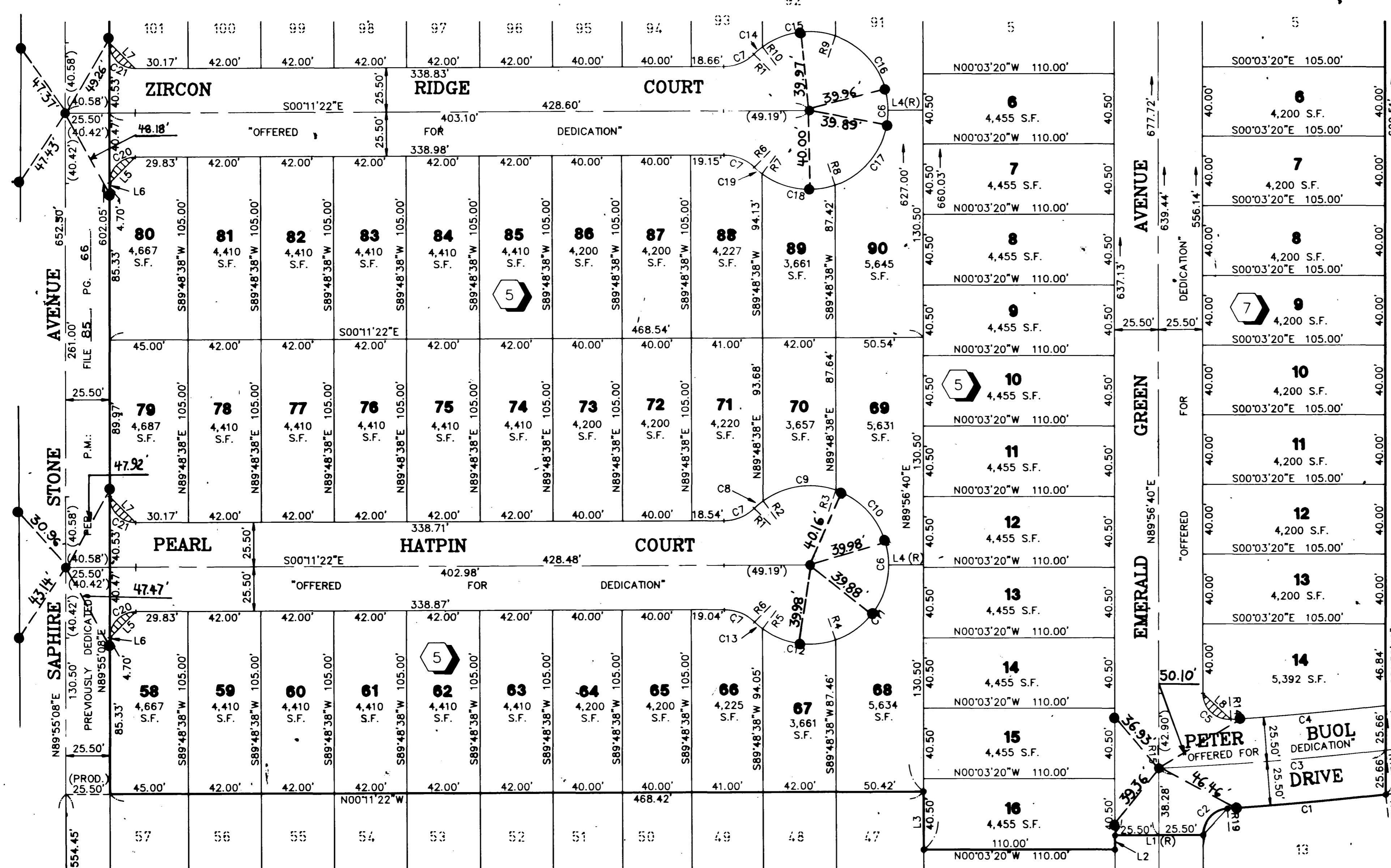
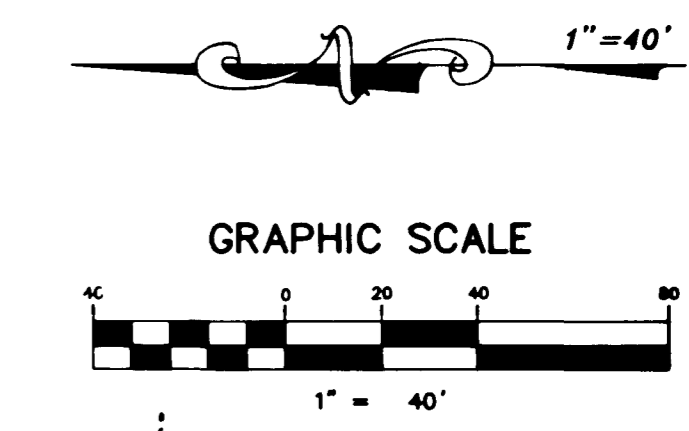
BEING PARCEL 2-3 OF PARCEL MAP: FILE 85, PAGE 66  
 A PORTION OF THE WEST HALF (W 1/2) OF THE SOUTHWEST QUARTER (SW 1/4) OF  
 OF SECTION 21, TOWNSHIP 20 SOUTH, RANGE 61 EAST, M.D.M., CITY OF LAS VEGAS, CLARK COUNTY, NEVADA.  
**MONUMENTATION TIE MAP**

I, STEPHEN P. GURLIDES, A PROFESSIONAL LAND SURVEYOR IN THE STATE OF NEVADA, DO HEREBY CERTIFY THAT THE MONUMENTS HAVE BEEN SET AND THE TIE DISTANCES ESTABLISHED AS SHOWN HEREON. THIS SURVEY WAS COMPLETED ON:

STEPHEN P. GURLIDES  
 NEVADA CERTIFICATION NO. 9105

2-9-98

SEE SHEET 3 FOR CONTINUATION



**NOTES:**

1. ALL REAR LOT CORNERS SHALL BE SET WITH A NAIL AND BRASS TAG P.L.S. 9105 ON BLOCK WALL AND ALL FRONT OF SIDE LOT CORNERS ADJOINING RIGHT-OF-WAY SHALL BE MARKED BY THE SAWCUTTING OF THE BACK OF CURBS ON THE PROLONGATION OF THE PROPERTY LINES.
2. SEE SHEET 4 FOR SURVEY ANALYSIS, CURVE, COURSE, AND RADIAL LINE TABLES.

**LEGEND**

- BOUNDARY LINE
- LOT LINE
- STREET CENTERLINE
- SET NAIL & BRASS TAG "VTN PLS 9105" OR SAWCUT TOP OF CURB ON THE PROLONGATION OF PROPERTY LINES PER NOTE 1 THIS SHEET.
- SET TYPE III MONUMENT AL. CAP "VTN PLS 9105"
- FOUND MONUMENT AS DESCRIBED
- 17 LOT NUMBER / TOTAL LOTS = 101
- C25 CURVE NUMBER
- L22 COURSE NUMBER
- R19 RADIAL LINE NUMBER
- (R) RADIAL
- 13 BLOCK NUMBER
- S.F. SQUARE FEET
- ▨ "SIGHT VISIBILITY RESTRICTION EASEMENT AREA" - ARE PUBLIC EASEMENTS AND AS SUCH THE HEIGHT OF LANDSCAPING OR PHYSICAL IMPROVEMENTS WITHIN THE EASEMENT AREA ARE RESTRICTED TO A MAXIMUM HEIGHT OF 30 INCHES.

PROPOSED DIAMOND POINT UNIT 4  
 PARCEL 2-4 P.M. FL 85 PG. 66

ACT	DATE	BY	REVISION
1	4/9/96	VCL	SOUTH BOUNDARY LINE REVISED

W.O. 4993-3  
 SHEET 2 OF 4  
 VCL

14152

058-4378-3 BOOK 75 PAGE 37

