

960531

01350

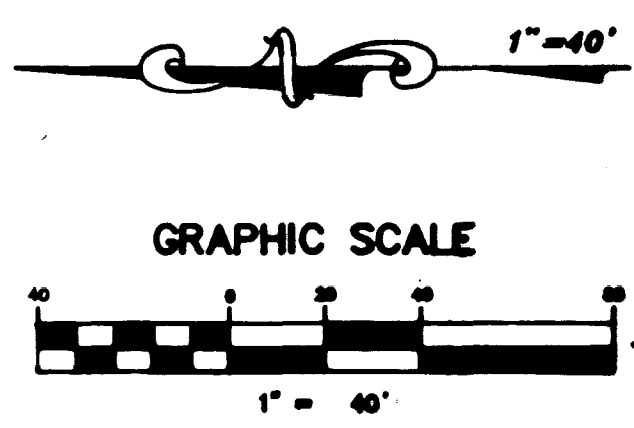
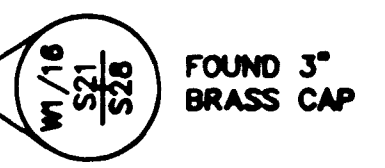
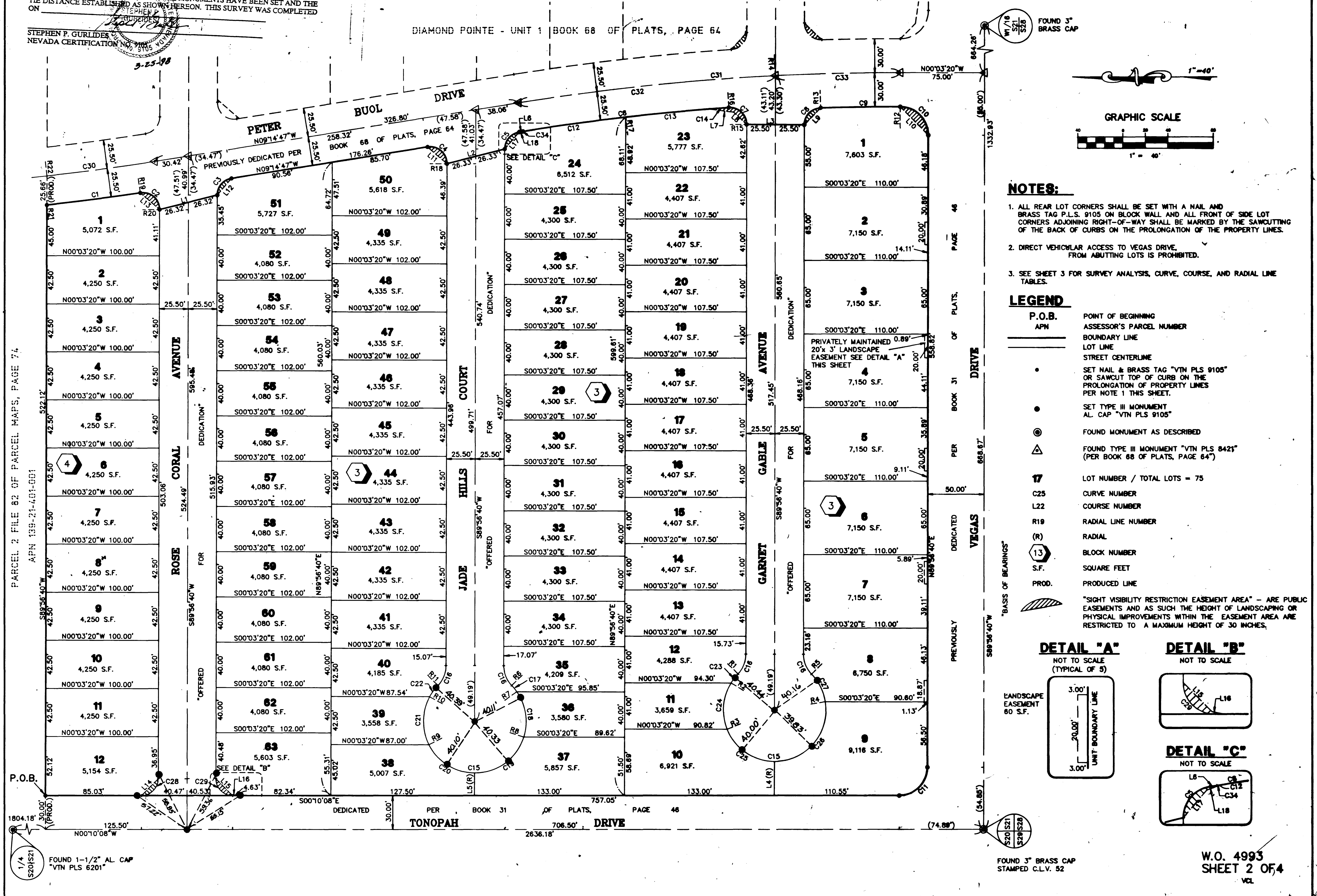
# DIAMOND POINTE UNIT 2

BEING A PORTION OF PARCEL 1 OF PARCEL MAP; FILE 82, PAGE 74  
A PORTION OF THE SOUTHWEST QUARTER (SW 1/4) OF THE SOUTHWEST QUARTER (SW 1/4) OF  
OF SECTION 21, TOWNSHIP 20 SOUTH, RANGE 61 EAST, M.D.M., CITY OF LAS VEGAS, CLARK COUNTY, NEVADA.  
MONUMENTATION TIE MAP

I, STEPHEN P. GURLIDES, A PROFESSIONAL LAND SURVEYOR IN THE STATE OF NEVADA, DO HEREBY CERTIFY THAT THE MONUMENTS HAVE BEEN SET AND THE TIE DISTANCE ESTABLISHED AS SHOWN HEREON. THIS SURVEY WAS COMPLETED ON 3-25-98

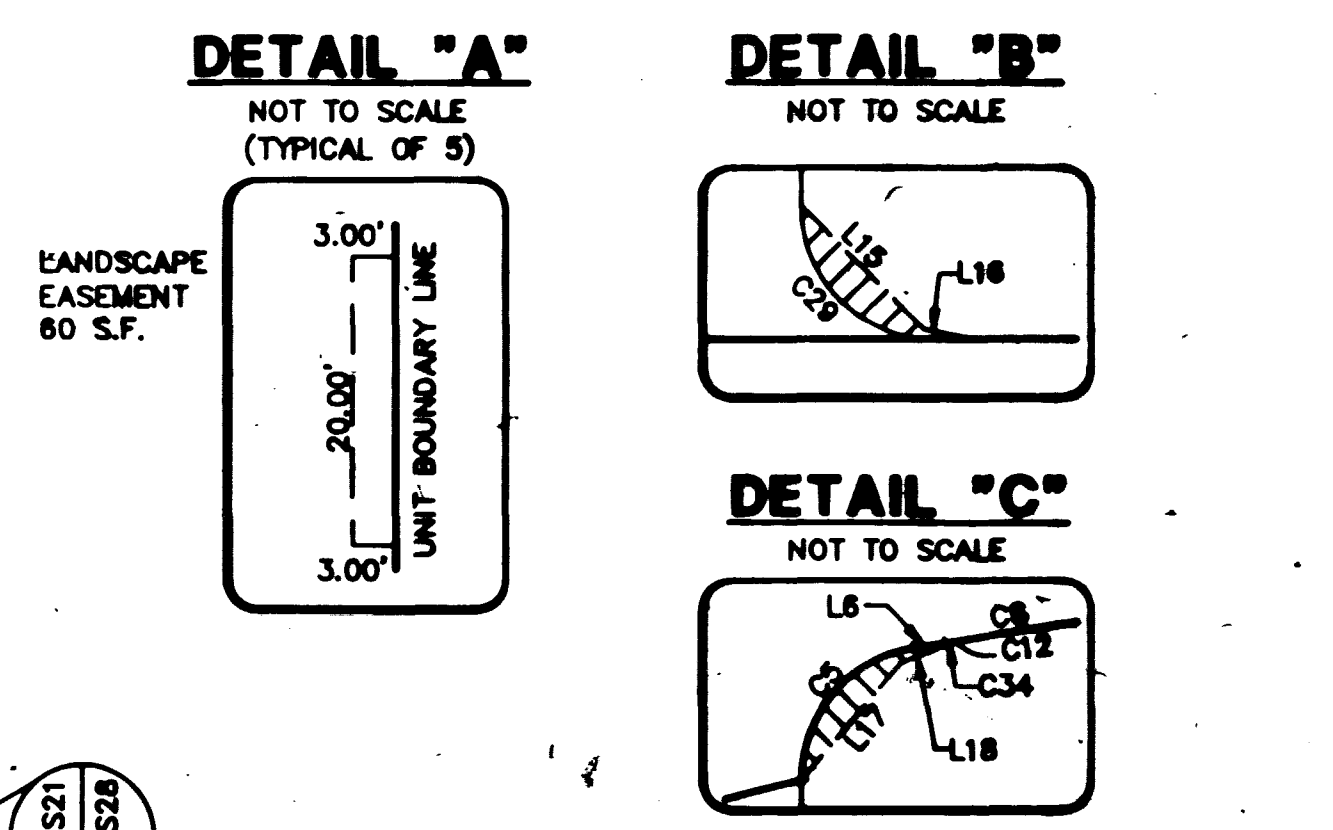
STEPHEN P. GURLIDES  
NEVADA CERTIFICATION NO. 5105

DIAMOND POINTE - UNIT 1 BOOK 68 OF PLATS, PAGE 64



- NOTES:**
- ALL REAR LOT CORNERS SHALL BE SET WITH A NAIL AND BRASS TAG P.L.S. 9105 ON BLOCK WALL AND ALL FRONT OF SIDE LOT CORNERS ADJOINING RIGHT-OF-WAY SHALL BE MARKED BY THE SAWCUTTING OF THE BACK OF CURBS ON THE PROLONGATION OF THE PROPERTY LINES.
  - DIRECT VEHICULAR ACCESS TO VEGAS DRIVE FROM ADJUTING LOTS IS PROHIBITED.
  - SEE SHEET 3 FOR SURVEY ANALYSIS, CURVE, COURSE, AND RADIAL LINE TABLES.

- LEGEND**
- |        |  |
|--------|--|
| P.O.B. | POINT OF BEGINNING   |
| APN    | ASSESSOR'S PARCEL NUMBER   |
| —      | BOUNDARY LINE  |
| —      | LOT LINE   |
| —      | STREET CENTERLINE  |
| •      | SET NAIL & BRASS TAG "VTN PLS 9105" OR SAWCUT TOP OF CURB ON THE PROLONGATION OF PROPERTY LINES PER NOTE 1 THIS SHEET.   |
| •      | SET TYPE III MONUMENT AL CAP "VTN PLS 9105"  |
| ⊙      | FOUND MONUMENT AS DESCRIBED  |
| ⊙      | FOUND TYPE III MONUMENT "VTN PLS 8421" (PER BOOK 68 OF PLATS, PAGE 64)   |
| 17     | LOT NUMBER / TOTAL LOTS = 75   |
| C25    | CURVE NUMBER   |
| L22    | COURSE NUMBER  |
| R19    | RADIAL LINE NUMBER   |
| (R)    | RADIAL   |
| 13     | BLOCK NUMBER   |
| S.F.   | SQUARE FEET  |
| PROD.  | PRODUCED LINE  |
| ▨      | "SIGHT VISIBILITY RESTRICTION EASEMENT AREA" - ARE PUBLIC EASEMENTS AND AS SUCH THE HEIGHT OF LANDSCAPING OR PHYSICAL IMPROVEMENTS WITHIN THE EASEMENT AREA ARE RESTRICTED TO A MAXIMUM HEIGHT OF 30 INCHES. |



PARCEL 2 FILE 82 OF PARCEL MAPS, PAGE 74  
APN 139-21-401-001

PAGE 48 OF PLATS PER BOOK 31 OF PLATS DEDICATED VEGAS DRIVE PREVIOUSLY DEDICATED

FOUND 1-1/2" AL CAP "VTN PLS 6201"

FOUND 3" BRASS CAP STAMPED C.L.V. 52

W.O. 4993 SHEET 2 OF 4

Book 74 Page 16 058-4378-2

5236

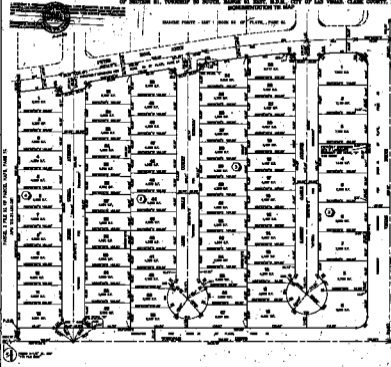
960631

01390

### DIAMOND POINTS UNIT 2

BEING A PORTION OF PARCEL 1 OF PARCEL MAP, FILE NO. PAGE 14,  
 A PORTION OF THE SOUTHWEST QUARTER (OR 1/4) OF THE SOUTHWEST QUARTER (OR 1/4) OF  
 SECTION 21, TOWNSHIP 20 NORTH, RANGE 21 WEST, R.2.E., CITY OF LAS VEGAS, CLARK COUNTY, NEVADA.  
 REFERENCED TO MAP

DIAMOND POINTS - UNIT 2 PART 26 OF PLAT, PAGE 21

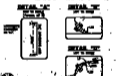


PARCEL 1 FILE NO. OF PARCEL MAP, PAGE 15  
APR 22 1988



**NOTES:**  
 1. THE DEVELOPER SHALL BE RESPONSIBLE FOR THE DESIGN AND CONSTRUCTION OF THE  
 COMMON AREAS AND UTILITIES.  
 2. THE DEVELOPER SHALL BE RESPONSIBLE FOR THE DESIGN AND CONSTRUCTION OF THE  
 COMMON AREAS AND UTILITIES.  
 3. THE DEVELOPER SHALL BE RESPONSIBLE FOR THE DESIGN AND CONSTRUCTION OF THE  
 COMMON AREAS AND UTILITIES.

- LEGEND:**
- UNIT 1
  - UNIT 2
  - UNIT 3
  - UNIT 4
  - UNIT 5
  - UNIT 6
  - UNIT 7
  - UNIT 8
  - UNIT 9
  - UNIT 10
  - UNIT 11
  - UNIT 12
  - UNIT 13
  - UNIT 14
  - UNIT 15
  - UNIT 16
  - UNIT 17
  - UNIT 18
  - UNIT 19
  - UNIT 20
  - UNIT 21
  - UNIT 22
  - UNIT 23
  - UNIT 24
  - UNIT 25
  - UNIT 26
  - UNIT 27
  - UNIT 28
  - UNIT 29
  - UNIT 30
  - UNIT 31
  - UNIT 32
  - UNIT 33
  - UNIT 34
  - UNIT 35
  - UNIT 36
  - UNIT 37
  - UNIT 38
  - UNIT 39
  - UNIT 40
  - UNIT 41
  - UNIT 42
  - UNIT 43
  - UNIT 44
  - UNIT 45
  - UNIT 46
  - UNIT 47
  - UNIT 48
  - UNIT 49
  - UNIT 50
  - UNIT 51
  - UNIT 52
  - UNIT 53
  - UNIT 54
  - UNIT 55
  - UNIT 56
  - UNIT 57
  - UNIT 58
  - UNIT 59
  - UNIT 60
  - UNIT 61
  - UNIT 62
  - UNIT 63
  - UNIT 64
  - UNIT 65
  - UNIT 66
  - UNIT 67
  - UNIT 68
  - UNIT 69
  - UNIT 70
  - UNIT 71
  - UNIT 72
  - UNIT 73
  - UNIT 74
  - UNIT 75
  - UNIT 76
  - UNIT 77
  - UNIT 78
  - UNIT 79
  - UNIT 80
  - UNIT 81
  - UNIT 82
  - UNIT 83
  - UNIT 84
  - UNIT 85
  - UNIT 86
  - UNIT 87
  - UNIT 88
  - UNIT 89
  - UNIT 90
  - UNIT 91
  - UNIT 92
  - UNIT 93
  - UNIT 94
  - UNIT 95
  - UNIT 96
  - UNIT 97
  - UNIT 98
  - UNIT 99
  - UNIT 100



1/4

20/20"

NO. 4888  
WEST 2 2004