

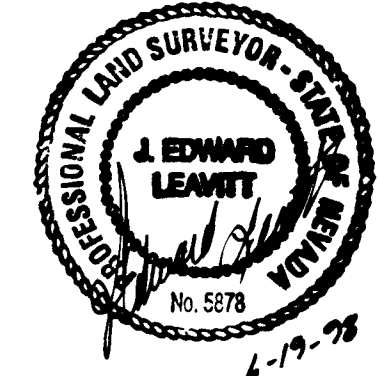
THE MONUMENTATION TIE MAP OF EAGLE TRACE

SITUATE IN THE CITY OF LAS VEGAS, CLARK COUNTY, NEVADA BEING THE SOUTH ONE-HALF OF GOVERNMENT LOT 2
IN THE NORTHEAST ONE-QUARTER OF SECTION 2, TOWNSHIP 20 SOUTH, RANGE 60 EAST, M.D.M.

SURVEYOR'S CERTIFICATE

I, J EDWARD LEAVITT, A PROFESSIONAL LAND SURVEYOR IN THE STATE OF NEVADA,
DO HEREBY CERTIFY THAT THE MONUMENTS HAVE BEEN SET AND THE TIE DISTANCES
WERE ESTABLISHED AS SHOWN HEREON.

THIS SURVEY WAS COMPLETED ON SEPT 16, 1997



J EDWARD LEAVITT, PLS 5878



LEGEND

	SET 5/8" REBAR W/ ALUM. CAP & TIES PLS 5878
	SET REFERENCE MONUMENT STAMPED "PLS 5878"
	FOUND MONUMENT AS INDICATED
	OVERALL PARCEL BOUNDARY LINE
	INTERIOR PROPERTY OR RIGHT-OF-WAY LINE
	STREET CENTERLINE
	EASEMENT LINE
	BLOCK DESIGNATOR
	CURVE TABLE REFERENCE NUMBER
	LINE TABLE REFERENCE NUMBER
	LOT DESIGNATOR - 83 TOTAL RESIDENTIAL LOTS

THE MONUMENTATION TIE MAP OF

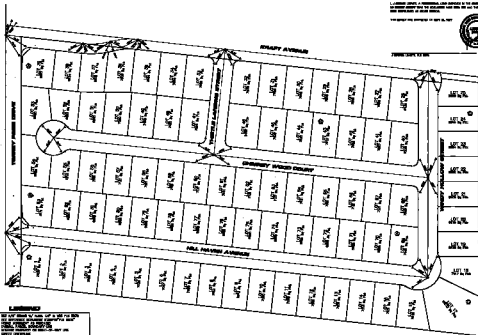
EAGLE TRACE

SITUATE IN THE CITY OF LAS VEGAS, CLARK COUNTY, NEVADA BEING THE SOUTH ONE-HALF OF GOVERNMENT LOT 2
IN THE NORTHEAST ONE-QUARTER OF SECTION 2, TOWNSHIP 20 SOUTH, RANGE 60 EAST, M.D.M.

SURVEYOR'S CERTIFICATE

I, **LEONARD J. HARRIS**, a Professional Land Surveyor in the State of Nevada, do hereby certify that the foregoing map was prepared by me and that the same was approved by me on this day of **SEPTEMBER**, 1977.

THE SURVEY WAS COMPLETED ON **SEPTEMBER 1977**



LEGEND

	Survey Boundary
	Lot Boundary
	Easement
	Right-of-Way
	Utility
	Monument
	Corner
	Iron Pipe
	Concrete Monument
	Wood Monument
	Metal Monument
	Survey Station
	Survey Line
	Survey Point
	Survey Boundary

THIS MONUMENTATION TIE MAP IS A PUBLIC RECORD