

ECHO RIDGE UNIT 3

BEING LOT 3 OF PARCEL MAP: FILE 76, PAGE 80
SITUATED IN THE NORTHWEST QUARTER (NW 1/4) OF THE NORTHEAST (NE 1/4) OF SECTION 31, T. 20 S., R. 62 E., M.D.M., CITY OF LAS VEGAS, CLARK COUNTY, NEVADA.

MONUMENTATION TIE MAP

LEGEND

- 2 LOT NUMBER / 59 LOTS
- P.O.B. POINT OF BEGINNING
- ③ BLOCK NUMBER
- L4 COURSE NUMBER
- C5 CURVE NUMBER
- R7 RADIAL LINE NUMBER
- FND. PT. AS INDICATED
- SET REBAR W/ALUM CAP, PLS 9105
- (R) RADIAL LINE

CURVE TABLE

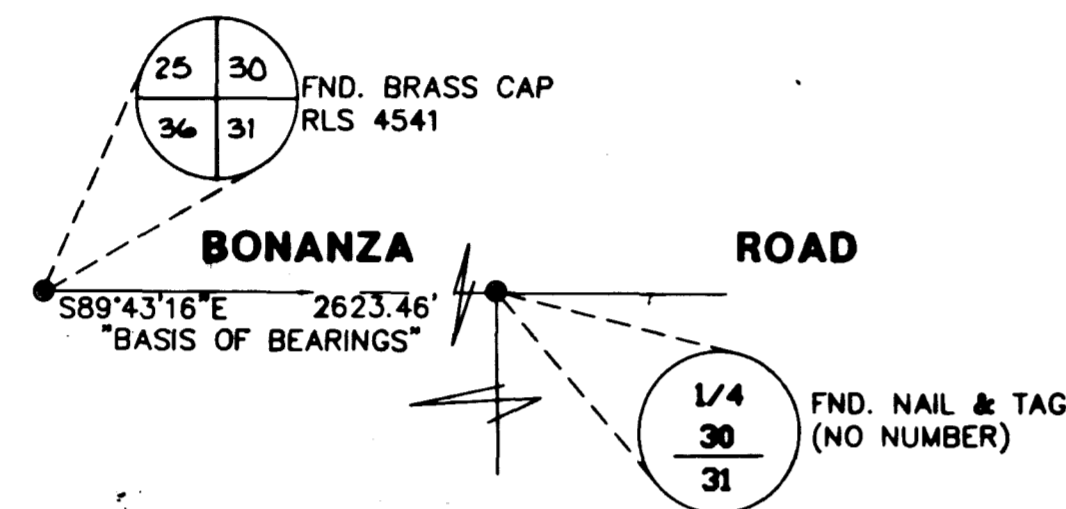
CURVE	RADIUS	LENGTH	TANGENT	DELTA
C1	20.00'	31.42'	20.00'	90°00'00"
C2	149.50'	36.55'	18.37'	14°00'24"
C3	200.50'	41.17'	20.66'	1°45'52"
C4	200.50'	10.68'	5.34'	0°30'06"
C5	149.50'	1.45'	0.72'	0°03'09"
C6	149.50'	38.00'	19.10'	14°33'43"
C7	200.50'	51.85'	26.07'	14°48'58"
C8	149.50'	13.23'	6.62'	05°04'20"
C9	149.50'	25.42'	12.74'	09°44'38"
C10	200.50'	15.36'	7.69'	04°23'24"
C11	200.50'	35.60'	17.84'	10°10'18"
C12	200.50'	50.96'	25.62'	14°33'43"
C13	149.50'	38.66'	19.44'	14°48'58"
C14	20.00'	31.42'	20.00'	90°00'00"
C15	25.00'	39.27'	25.00'	90°00'00"
C16	25.00'	11.61'	5.91'	26°36'17"
C17	60.00'	15.22'	7.65'	14°32'13"
C18	60.00'	30.83'	15.77'	29°26'41"
C19	60.00'	20.09'	10.14'	19°11'17"
C20	60.00'	28.00'	14.26'	26°44'17"
C21	60.00'	29.74'	15.18'	28°23'53"
C22	60.00'	26.08'	13.25'	24°54'11"
C23	25.00'	11.61'	5.91'	26°36'17"
C25	25.00'	39.27'	25.00'	90°00'00"
C26	25.00'	11.61'	5.91'	26°36'17"
C27	60.00'	29.30'	14.95'	27°58'34"
C28	60.00'	31.20'	15.96'	29°47'22"
C29	60.00'	30.12'	15.38'	28°45'46"
C30	60.00'	30.88'	15.79'	29°29'14"
C31	60.00'	28.48'	14.51'	27°11'38"
C32	25.00'	11.61'	5.91'	26°36'17"
C33	60.00'	149.97'	180.42'	143°12'34"
C34	175.00'	44.48'	22.36'	14°33'43"
C35	175.00'	45.25'	22.75'	14°48'58"

COURSE TABLE

LINE	DIRECTION	DISTANCE
L1	S89°52'16" W	35.41'
L2	S89°57'50" W	10.00'
L3	N89°52'16" E	10.00'
L4	N89°52'16" E	2.89'
L5	N00°07'44" W	1.15'
L6	S00°07'44" E	3.72'
L7	N89°52'16" E	14.48'

RADIAL LINE TABLE

LINE	DIRECTION
R1	S14°23'23" E
R2	S08°10'46" E
R3	N10°33'17" W
R4	N05°12'04" W
R5	N14°56'42" W
R6	N26°44'01" W
R7	N63°31'27" W
R8	N63°15'59" E
R9	S26°28'33" W
R10	S36°41'39" E
R11	S17°30'21" E
R12	S11°56'20" W
R13	N00°22'59" W
R14	N88°09'52" E



I, STEPHEN P. GURLIDES, A PROFESSIONAL LAND SURVEYOR IN THE STATE OF NEVADA, DO HEREBY CERTIFY THAT THE MONUMENTS HAVE BEEN SET AND THE TIE DISTANCE ESTABLISHED AS SHOWN HEREON. THIS SURVEY WAS COMPLETED ON

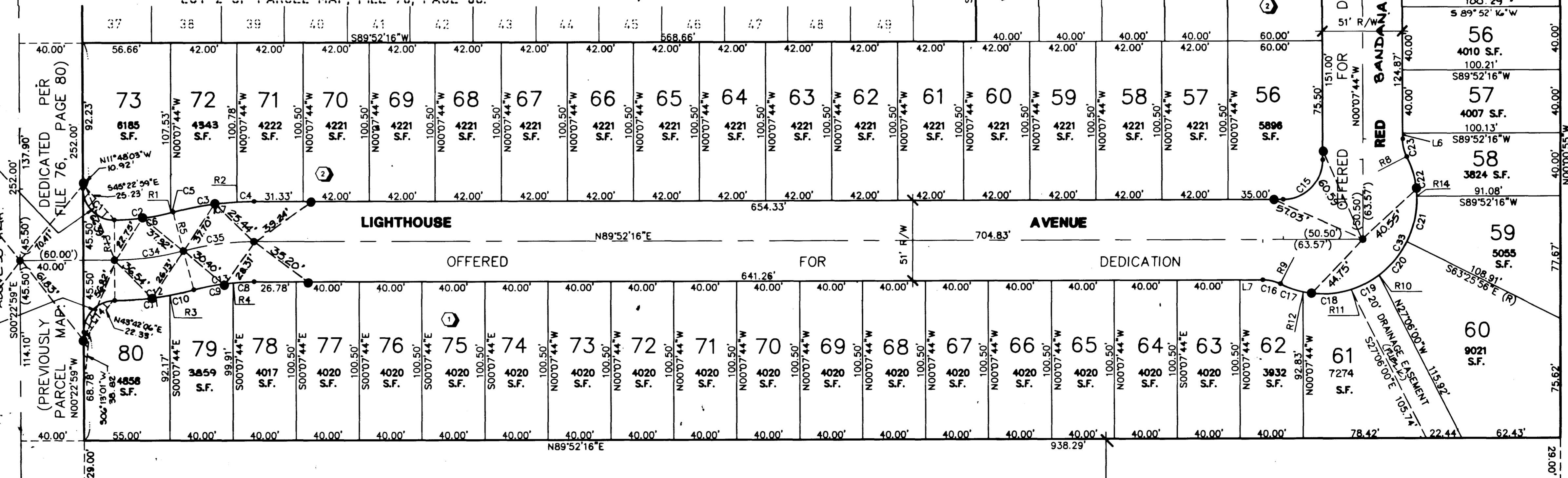
STEPHEN P. GURLIDES
NEVADA CERTIFICATION NO. 9182

ECHO RIDGE - UNIT 3, BOOK 65, PAGE 23
LOT 2 OF PARCEL MAP: FILE 76, PAGE 80. 9-27-96

EXIST. PARK BONANZA EAST UNIT 5C - BK. 18, PG. 41

EXIST. PARK BONANZA EAST UNIT 5B - BK. 17, PG. 91

SANDHILL ROAD
SIGHT RESTRICTION AREA
NO SIDE CONSTRUCTION



LOT 4 OF PARCEL MAP FILE 76, PAGE 80

1" = 40'

UNION INTL. HODCARRIERS E872
APH 060-290-004

EXISTING CEDAR CHANNEL CONVEYED TO THE CITY OF LAS VEGAS BY DEED, DOC. NO. 1633872 REC'D 1/17/83

NOTES:

- PURSUANT TO NRS 278.371 ALL REAR LOT CORNERS SHALL BE SET WITH A NAIL AND TAG "PLS 9421" ON BLOCK WALLS AND ALL FRONT OR SIDE LOT CORNERS ADJOINING RIGHT-OF-WAY SHALL BE MARKED BY THE SAWCUTTING OF THE BACK OF CURBS ON THE PROLONGATION OF THE PROPERTY LINES.
- DIRECT VEHICULAR ACCESS TO SANDHILL ROAD FROM ABUTTING LOTS IS PROHIBITED.

DATE	BY	REVISION
12/12/94	TJ	ADDED SIGHT RESTRICTION AREA & NOTE

