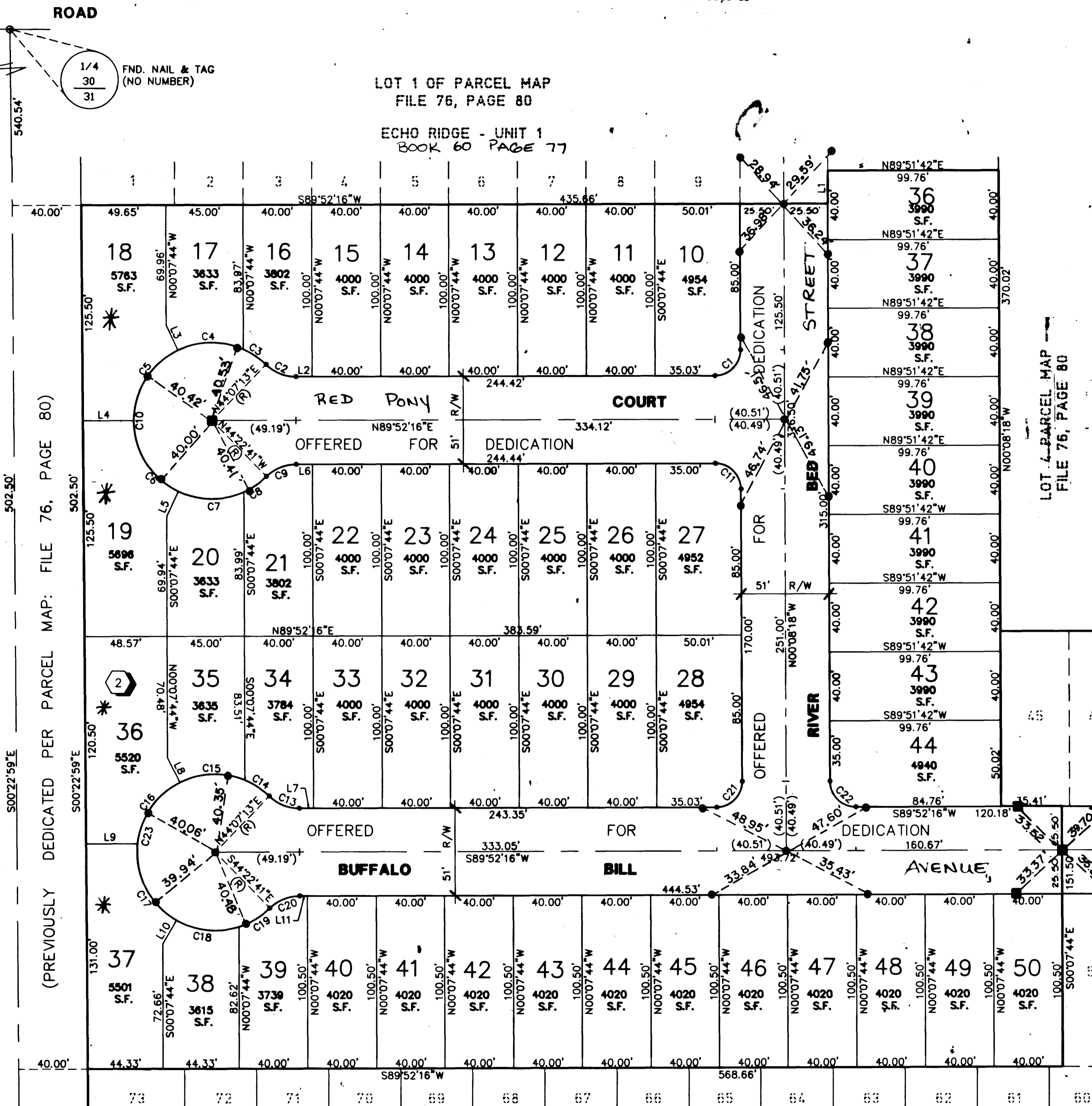
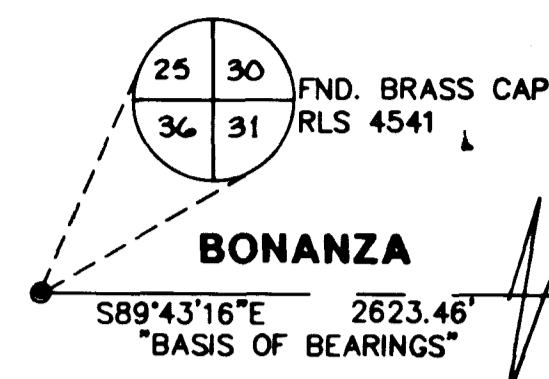


ECHO RIDGE UNIT 2

BEING LOT 2 OF PARCEL MAP: FILE 76, PAGE 80

SITUATED IN THE NORTHWEST QUARTER (NW 1/4) OF THE NORTHEAST (NE 1/4) OF SECTION 31, T. 20 S., R. 62 E., M.D.M., CITY OF LAS VEGAS, CLARK COUNTY, NEVADA.

MONUMENTATION TIE MAP



I, STEPHEN P. GURLIDES, A PROFESSIONAL LAND SURVEYOR IN THE STATE OF NEVADA, DO HEREBY CERTIFY THAT THE MONUMENTS HAVE BEEN SET AND THE TIE DISTANCE ESTABLISHED AS SHOWN HEREON. THIS SURVEY WAS COMPLETED ON

STEPHEN P. GURLIDES
NEVADA CERTIFICATION NO. 9105
5-13-97

LEGEND

- 2 LOT NUMBER / 50 LOTS
- P.O.B. POINT OF BEGINNING
- (3) BLOCK NUMBER
- L4 COURSE NUMBER
- C5 CURVE NUMBER
- R7 RADIAL LINE NUMBER
- FND. PT. AS INDICATED
- FND. REBAR W/ALUM. CAP. PLS 8421
- (R) RADIAL LINE
- SET REBAR W/ALUM. CAP. PLS 8105

CURVE TABLE

CURVE	RADIUS	LENGTH	TANGENT	DELTA
C1	15.00	23.56	15.00	90°00'34"
C2	25.00	19.31	10.16	44°14'57"
C3	45.50	15.99	8.08	20°08'13"
C4	45.50	39.35	21.00	49°32'45"
C5	45.50	51.27	28.75	64°33'59"
C6	45.50	51.31	28.77	64°36'28"
C7	45.50	39.36	21.00	49°33'35"
C8	45.50	15.99	8.06	20°04'53"
C9	25.00	19.31	10.16	44°14'57"
C10	45.50	213.22	46.71	268°29'54"
C11	15.00	23.56	15.00	89°59'26"
C13	25.00	19.31	10.16	44°14'57"
C14	45.50	17.16	8.68	21°36'34"
C15	45.50	39.06	20.82	49°11'09"
C16	45.50	45.38	24.78	57°08'42"
C17	45.50	52.78	29.81	66°27'35"
C18	45.50	37.64	19.97	47°23'59"
C19	45.50	21.20	10.80	26°41'56"
C20	25.00	19.31	10.16	44°14'57"
C21	15.00	23.56	15.00	90°00'34"
C22	15.00	23.56	15.00	89°59'26"
C23	45.50	213.22	46.71	268°29'54"

COURSE TABLE

LINE	DIRECTION	DISTANCE
L2	S89°52'16" W	9.39
L3	S25°33'45" E (M)	16.00
L4	S89°52'16" W (M)	30.00
L5	N25°15'48" E (M)	16.00
L6	S89°52'16" W	9.43
L7	S89°52'16" W	8.32
L8	S26°40'29" E (M)	16.00
L9	N89°52'16" E	30.30
L10	N29°43'14" E (M)	16.00
L11	S89°52'16" W	4.53

NOTES:

PURSUANT TO NRS 278.371 ALL REAR LOT CORNERS SHALL BE SET WITH A NAIL AND TAG "PLS 8421" ON BLOCK WALLS AND ALL FRONT OR SIDE LOT CORNERS ADJOINING RIGHT-OF-WAY SHALL BE MARKED BY THE SAWCUTTING OF THE BACK OF CURBS ON THE PROLONGATION OF THE PROPERTY LINES.
* DIRECT VEHICULAR ACCESS TO SANDHILL ROAD FROM ADJUTING LOTS IS PROHIBITED.

ACT	DATE	BY	REVISION

PROPOSED
ECHO RIDGE - UNIT 3
LOT 3 OF PARCEL MAP
FILE 76, PAGE 80

1" = 40'

LOT 4 - PARCEL MAP
FILE 76, PAGE 80

PROPOSED
ECHO RIDGE - UNIT 3

2688

Back to Page 23

