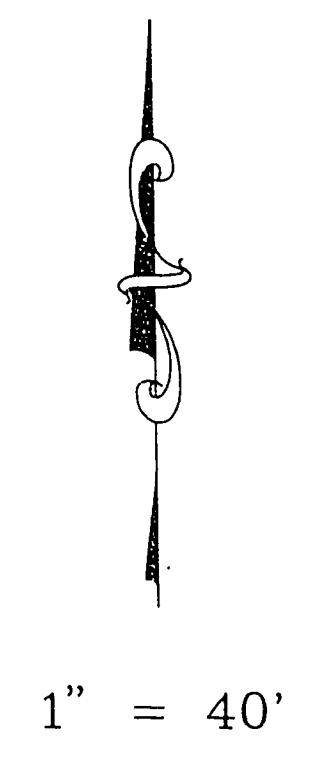
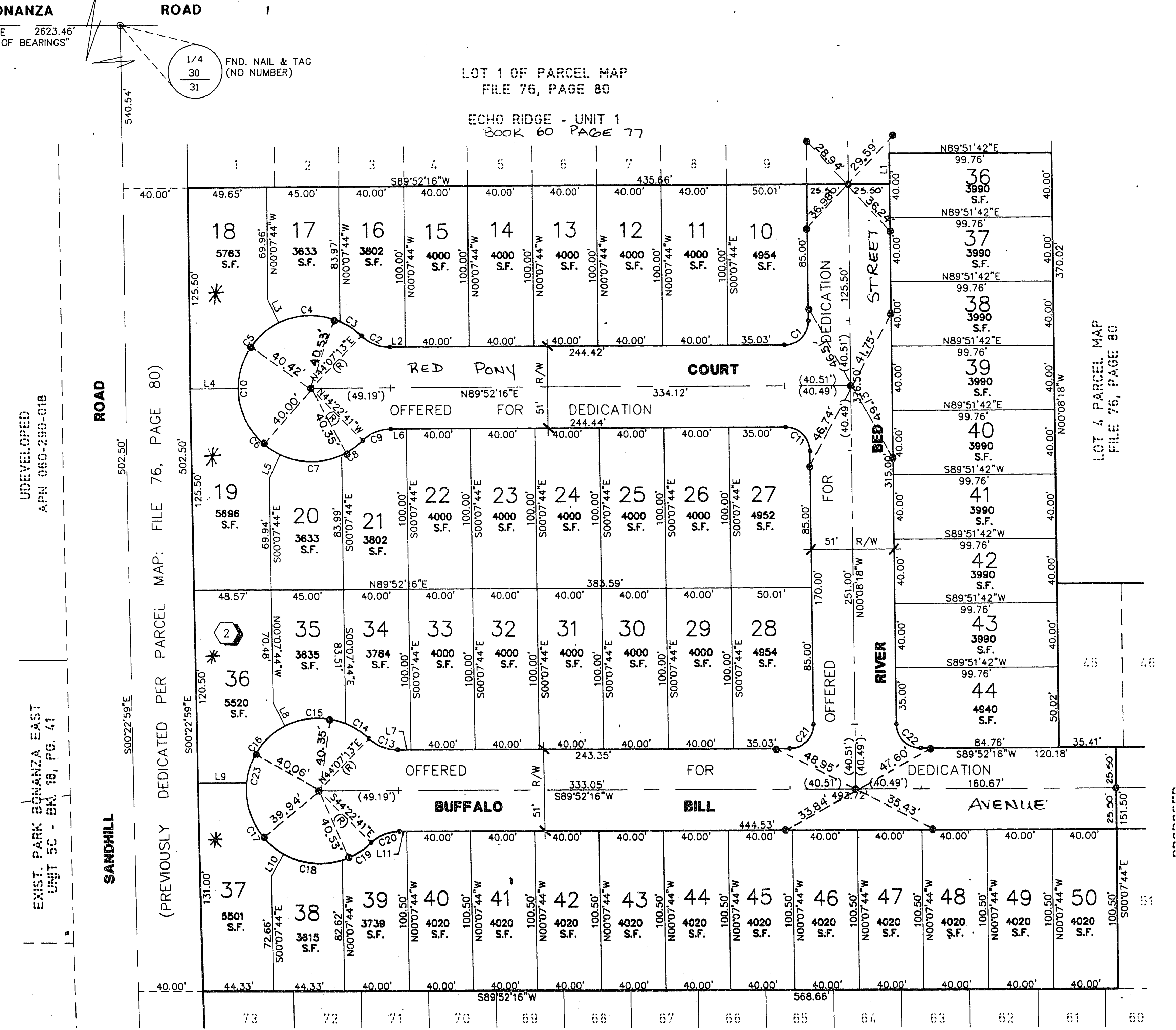
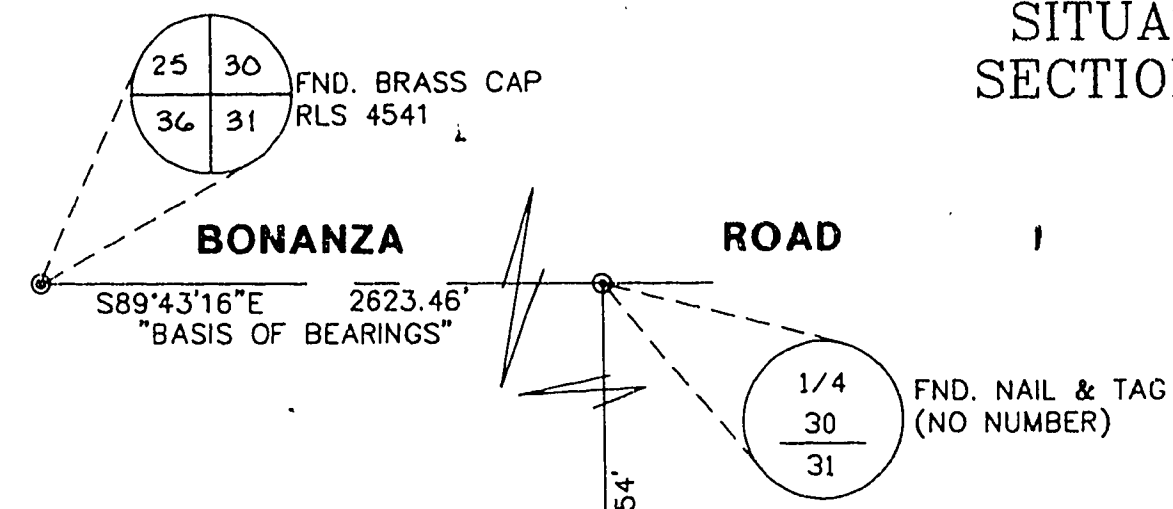


ECHO RIDGE UNIT 2

BEING LOT 2 OF PARCEL MAP: FILE 76, PAGE 80
 SITUATED IN THE NORTHWEST QUARTER (NW 1/4) OF THE NORTHEAST (NE 1/4) OF
 SECTION 31, T. 20 S., R. 62 E., M.D.M., CITY OF LAS VEGAS, CLARK COUNTY, NEVADA.

MONUMENTATION TIE MAP



LEGEND

- 2 LOT NUMBER / 50 LOTS
- P.O.B. POINT OF BEGINNING
- ⊙ BLOCK NUMBER
- L4 COURSE NUMBER
- C5 CURVE NUMBER
- R7 RADIAL LINE NUMBER
- FND. PT. AS INDICATED
- SET REBAR W/ALUM CAP, PLS 8421
- (R) RADIAL LINE

CURVE TABLE

CURVE	RADIUS	LENGTH	TANGENT	DELTA
C1	15.00'	23.56'	15.00'	90°00'34"
C2	25.00'	19.31'	10.16'	44°14'57"
C3	45.50'	15.99'	8.08'	20°08'13"
C4	45.50'	39.35'	21.00'	49°32'45"
C5	45.50'	51.27'	28.75'	64°33'59"
C6	45.50'	51.31'	28.77'	64°36'25"
C7	45.50'	39.36'	21.00'	49°33'35"
C8	45.50'	15.95'	8.06'	20°04'53"
C9	25.00'	19.31'	10.16'	44°14'57"
C10	45.50'	213.22'	46.71'	268°29'54"
C11	15.00'	23.56'	15.00'	89°59'26"
C13	25.00'	19.31'	10.16'	44°14'57"
C14	45.50'	17.16'	8.68'	21°36'34"
C15	45.50'	39.06'	20.82'	49°11'09"
C16	45.50'	45.38'	24.78'	57°08'42"
C17	45.50'	52.78'	28.81'	66°27'35"
C18	45.50'	37.64'	19.97'	47°23'59"
C19	45.50'	21.20'	10.80'	26°41'56"
C20	25.00'	19.31'	10.16'	44°14'57"
C21	15.00'	23.56'	15.00'	90°00'34"
C22	15.00'	23.56'	15.00'	89°59'26"
C23	45.50'	213.22'	46.71'	268°29'54"

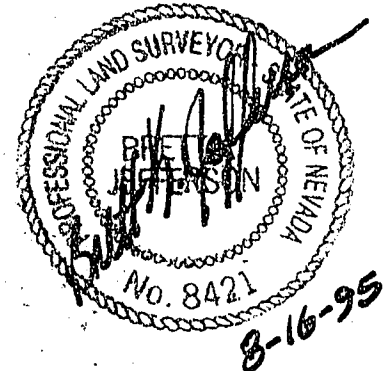
COURSE TABLE

LINE	DIRECTION	DISTANCE
L2	S89°52'16" W	9.39'
L3	S25°33'45" E (R)	16.00'
L4	S89°52'16" W (R)	30.00'
L5	N25°15'48" E (R)	16.00'
L6	S89°52'16" W	9.43'
L7	S89°52'16" W	8.32'
L8	S26°40'29" E (R)	16.00'
L9	N89°52'16" E	30.30'
L10	N29°43'14" E (R)	16.00'
L11	S89°52'16" W	4.53'

NOTES:

PURSUANT TO NRS 278.371 ALL REAR LOT CORNERS SHALL BE SET WITH A NAIL AND TAG "PLS 8421" ON BLOCK WALLS AND ALL FRONT OR SIDE LOT CORNERS ADJOINING RIGHT-OF-WAY SHALL BE MARKED BY THE SAWCUTTING OF THE BACK OF CURBS ON THE PROLONGATION OF THE PROPERTY LINES.
 * DIRECT VEHICULAR ACCESS TO SANDHILL ROAD FROM ABUTTING LOTS IS PROHIBITED.

I, BRETT K. JEFFERSON, A PROFESSIONAL LAND SURVEYOR IN THE STATE OF NEVADA, DO HEREBY CERTIFY THAT THE MONUMENTS HAVE BEEN SET AND THE TIE DISTANCE ESTABLISHED AS SHOWN HEREON. THIS SURVEY WAS COMPLETED ON 5/11/95
 BRETT K. JEFFERSON
 NEVADA CERTIFICATION NO. 8421



ACT	DATE	BY	REVISION

W.O. 4486-2
 SHEET 2 OF 2
 T.U.

Back 11-6-5 Page 23 058-4296-2