

440302

01450

ECHO RIDGE - UNIT 1
 BEING LOT 1 OF A PARCEL MAP (FILE 76, PAGE 80),
 SITUATE IN THE NW1/4 OF THE NE1/4 OF SECTION 31, T.20S.,
 R.62E., M.D.M., CITY OF LAS VEGAS, CLARK COUNTY, NEVADA.
MONUMENTATION TIE MAP

RADIAL LINE TABLE

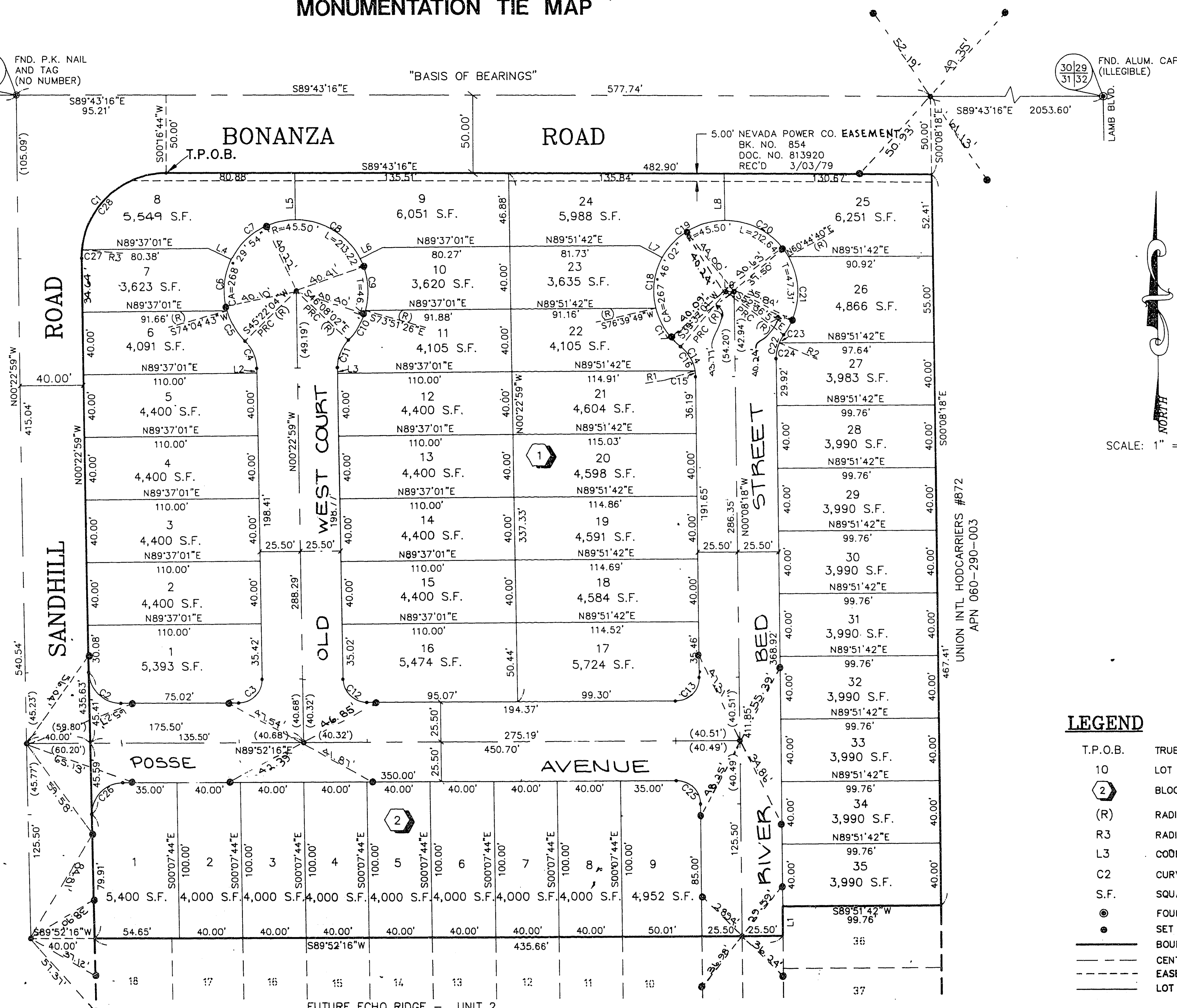
LINE	DIRECTION
R1	N81°05'39"E
R2	N66°21'37"W
R3	N84°40'39"W

COURSE TABLE

LINE	DIRECTION	DISTANCE
L1	S00°08'18"E	19.00'
L2	N00°22'59"W	3.00'
L3	N00°22'59"W	3.75'
L4	S63°29'49"E (R)	16.00'
L5	N00°22'59"W (R)	30.01'
L6	S63°30'56"W (R)	16.00'
L7	S61°21'20"E (R)	16.00'
L8	N00°07'57"W (R)	30.00'
L9	N89°51'42"E	5.41'

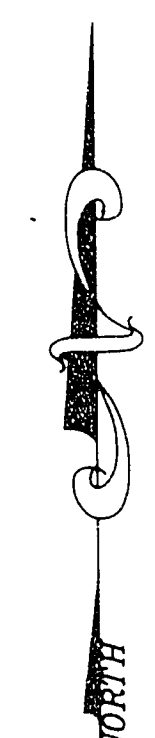
CURVE TABLE

CURVE	RADIUS	LENGTH	TANGENT	DELTA
C1	54.00'	85.45'	54.63'	90°39'43"
C2	20.00'	31.33'	19.91'	89°44'45"
C3	15.00'	23.63'	15.07'	90°15'15"
C4	25.00'	19.31'	10.16'	44°14'57"
C5	45.50'	22.80'	11.64'	28°42'39"
C6	45.50'	33.69'	17.66'	42°55'28"
C7	45.50'	50.12'	27.94'	63°06'50"
C8	45.50'	50.74'	28.38'	63°53'54"
C9	45.50'	33.85'	17.75'	42°37'38"
C10	45.50'	22.02'	11.23'	27°43'25"
C11	25.00'	19.31'	10.16'	44°14'57"
C12	15.00'	23.50'	14.93'	89°44'45"
C13	15.00'	23.56'	15.00'	90°00'34"
C14	25.00'	21.92'	11.72'	50°14'41"
C15	25.00'	3.83'	1.92'	08°46'03"
C16	25.00'	18.10'	9.47'	41°28'38"
C17	45.50'	29.42'	15.24'	37°02'48"
C18	45.50'	33.34'	17.46'	41°58'51"
C19	45.50'	48.62'	26.92'	61°13'24"
C20	45.50'	48.34'	26.74'	60°52'37"
C21	45.50'	52.92'	29.91'	66°38'23"
C22	25.00'	16.37'	8.49'	37°31'21"
C23	25.00'	6.00'	3.01'	13°44'40"
C24	25.00'	10.38'	5.28'	23°48'40"
C25	15.00'	23.56'	15.00'	89°59'26"
C26	20.00'	31.50'	20.09'	90°15'15"
C27	54.00'	5.38'	2.69'	05°42'20"
C28	54.00'	80.07'	49.44'	84°57'23"



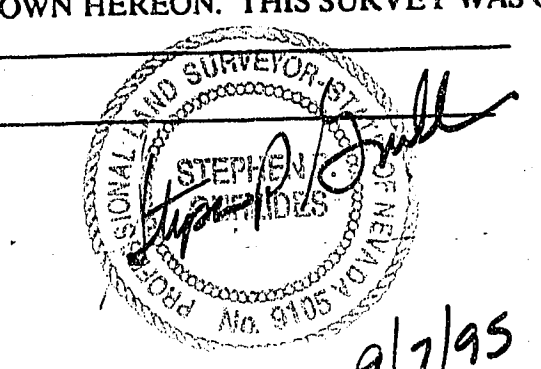
- LEGEND**
- T.P.O.B. TRUE POINT OF BEGINNING
 - 10 LOT NUMBER - TOTAL LOTS = 44
 - 2 BLOCK NUMBER
 - (R) RADIAL LINE
 - R3 RADIAL LINE NUMBER
 - L3 COURSE NUMBER
 - C2 CURVE NUMBER
 - S.F. SQUARE FOOT
 - FOUND POINT AS INDICATED
 - SET TYPE III MON., PLS 9105 (WITH TIES)
 - BOUNDARY LINE
 - - - CENTERLINE
 - - - EASEMENT LINE
 - LOT LINE

SCALE: 1" = 40'



I, STEPHEN P. GURLIDES, A PROFESSIONAL LAND SURVEYOR IN THE STATE OF NEVADA, DO HEREBY CERTIFY THAT THE MONUMENTS HAVE BEEN SET AND THE TIE DISTANCE ESTABLISHED AS SHOWN HEREON. THIS SURVEY WAS COMPLETED ON JULY 21, 1995

STEPHEN P. GURLIDES
 NEVADA CERTIFICATION NO. 9105



NOTE:
 DIRECT VEHICULAR ACCESS TO BONANZA ROAD AND SANDHILL ROAD FROM ABUTTING LOTS IS PROHIBITED.

NOTE:
 PURSUANT TO NRS 278.371 ALL REAR LOT CORNERS SHALL BE SET WITH A NAIL AND TAG *PLS 9105* ON BLOCK WALLS AND ALL FRONT OR SIDE LOT CORNERS ADJOINING RIGHT-OF-WAY SHALL BE MARKED BY THE SAWCUTTING OF THE BACK OF CURBS ON THE PROLONGATION OF THE PROPERTY LINES.

ACT	DATE	BY	REVISION
1	8/3/93	T.Z.	REV. 25' RAD. TO 54' RAD.; REV. S.F. LOTS 7 & 8, BLK - 1

W.O. 4486-1
 SHEET 2 OF 2

11-6.6 BOOK 60 Page 77
 058-4296-1