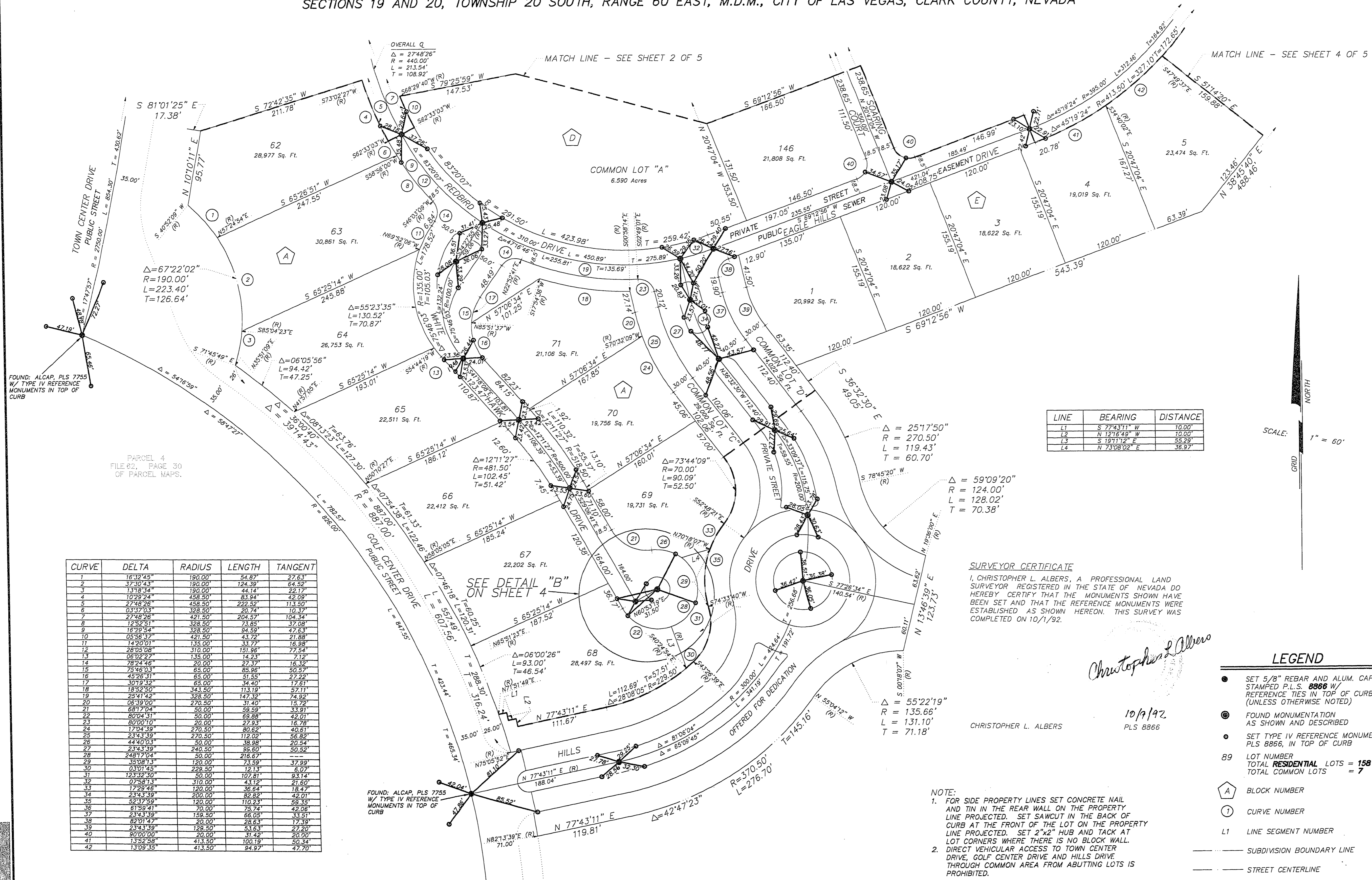


# EAGLE HILLS

## MONUMENT TIE MAP

BEING A SUBDIVISION OF LOT 1 OF "SUMMERLIN VILLAGE 1 SOUTH - UNIT NO. 2" AS SHOWN BY MAP THEREOF ON FILE IN BOOK 50, PAGE 35 OF PLATS IN THE CLARK COUNTY RECORDERS OFFICE, CLARK COUNTY, NEVADA, LYING WITHIN SECTIONS 19 AND 20, TOWNSHIP 20 SOUTH, RANGE 60 EAST, M.D.M., CITY OF LAS VEGAS, CLARK COUNTY, NEVADA



FOUND: ALCAP, PLS 7755 W/ TYPE IV REFERENCE MONUMENTS IN TOP OF CURB

PARCEL 4 FILE 62, PAGE 30 OF PARCEL MAPS.

CURVE	DELTA	RADIUS	LENGTH	TANGENT
1	1632'45"	190.00'	54.87'	27.63'
2	3730'43"	190.00'	124.39'	64.52'
3	1318'34"	190.00'	44.14'	22.17'
4	1029'24"	458.50'	83.94'	42.59'
5	2748'26"	458.50'	222.52'	113.50'
6	0337'03"	328.50'	20.74'	10.37'
7	2748'26"	421.50'	204.57'	104.14'
8	1252'51"	328.50'	73.98'	37.06'
9	1629'54"	328.50'	94.59'	47.63'
10	0556'37"	421.50'	43.72'	21.88'
11	1420'01"	135.00'	33.77'	16.98'
12	2805'08"	310.00'	151.96'	77.54'
13	0622'27"	135.00'	14.23'	7.12'
14	7824'46"	20.00'	22.37'	16.32'
15	7548'03"	65.00'	85.96'	50.57'
16	4526'31"	65.00'	51.55'	27.22'
17	3219'32"	65.00'	34.40'	17.61'
18	1852'50"	343.50'	113.19'	57.11'
19	2847'42"	328.50'	147.32'	74.92'
20	0639'00"	270.50'	31.40'	15.78'
21	6817'04"	30.00'	58.59'	33.91'
22	8004'31"	50.00'	69.88'	42.01'
23	8000'10"	20.00'	27.93'	16.78'
24	1724'59"	270.50'	80.62'	42.61'
25	2343'39"	270.50'	112.02'	56.82'
26	4440'03"	30.00'	38.98'	20.54'
27	2343'39"	240.50'	86.60'	50.52'
28	2481'704"	50.00'	216.67'	109.57'
29	3508'13"	120.00'	73.59'	37.99'
30	0301'45"	228.50'	12.13'	6.07'
31	1231'230"	50.00'	103.81'	53.14'
32	0758'13"	120.00'	43.12'	21.60'
33	1729'46"	120.00'	36.64'	18.47'
34	2343'39"	200.00'	85.85'	45.01'
35	5237'59"	120.00'	110.23'	58.35'
36	6153'41"	70.00'	75.74'	42.06'
37	2343'39"	158.50'	66.05'	33.51'
38	8201'42"	20.00'	28.63'	17.39'
39	2343'39"	128.50'	53.63'	27.20'
40	8070'00"	20.00'	31.42'	20.29'
41	1352'58"	413.50'	100.19'	50.54'
42	1309'35"	413.50'	84.97'	47.70'

LINE	BEARING	DISTANCE
L1	S 77°43'11" W	10.00'
L2	N 12°16'49" W	19.00'
L3	S 18°11'12" E	55.28'
L4	N 73°08'02" E	36.97'

**SURVEYOR CERTIFICATE**  
 I, CHRISTOPHER L. ALBERS, A PROFESSIONAL LAND SURVEYOR REGISTERED IN THE STATE OF NEVADA DO HEREBY CERTIFY THAT THE MONUMENTS SHOWN HAVE BEEN SET AND THAT THE REFERENCE MONUMENTS WERE ESTABLISHED AS SHOWN HEREON. THIS SURVEY WAS COMPLETED ON 10/1/92.

*Christopher L. Albers*  
 10/1/92  
 PLS 8866

### LEGEND

- SET 5/8" REBAR AND ALUM. CAP STAMPED P.L.S. 8866 W/ REFERENCE TIES IN TOP OF CURB (UNLESS OTHERWISE NOTED)
- ⊙ FOUND MONUMENTATION AS SHOWN AND DESCRIBED
- SET TYPE IV REFERENCE MONUMENT, PLS 8866, IN TOP OF CURB
- 89 LOT NUMBER  
 TOTAL RESIDENTIAL LOTS = 158  
 TOTAL COMMON LOTS = 7
- ⬢ BLOCK NUMBER
- ① CURVE NUMBER
- L1 LINE SEGMENT NUMBER
- SUBDIVISION BOUNDARY LINE
- STREET CENTERLINE

**NOTE:**  
 1. FOR SIDE PROPERTY LINES SET CONCRETE NAIL AND TIN IN THE REAR WALL ON THE PROPERTY LINE PROJECTED. SET SAWCUT IN THE BACK OF CURB AT THE FRONT OF THE LOT ON THE PROPERTY LINE PROJECTED. SET 2"x2" HUB AND TACK AT LOT CORNERS WHERE THERE IS NO BLOCK WALL. DIRECT VEHICULAR ACCESS TO TOWN CENTER DRIVE, GOLF CENTER DRIVE AND HILLS DRIVE THROUGH COMMON AREA FROM ADJUTING LOTS IS PROHIBITED.