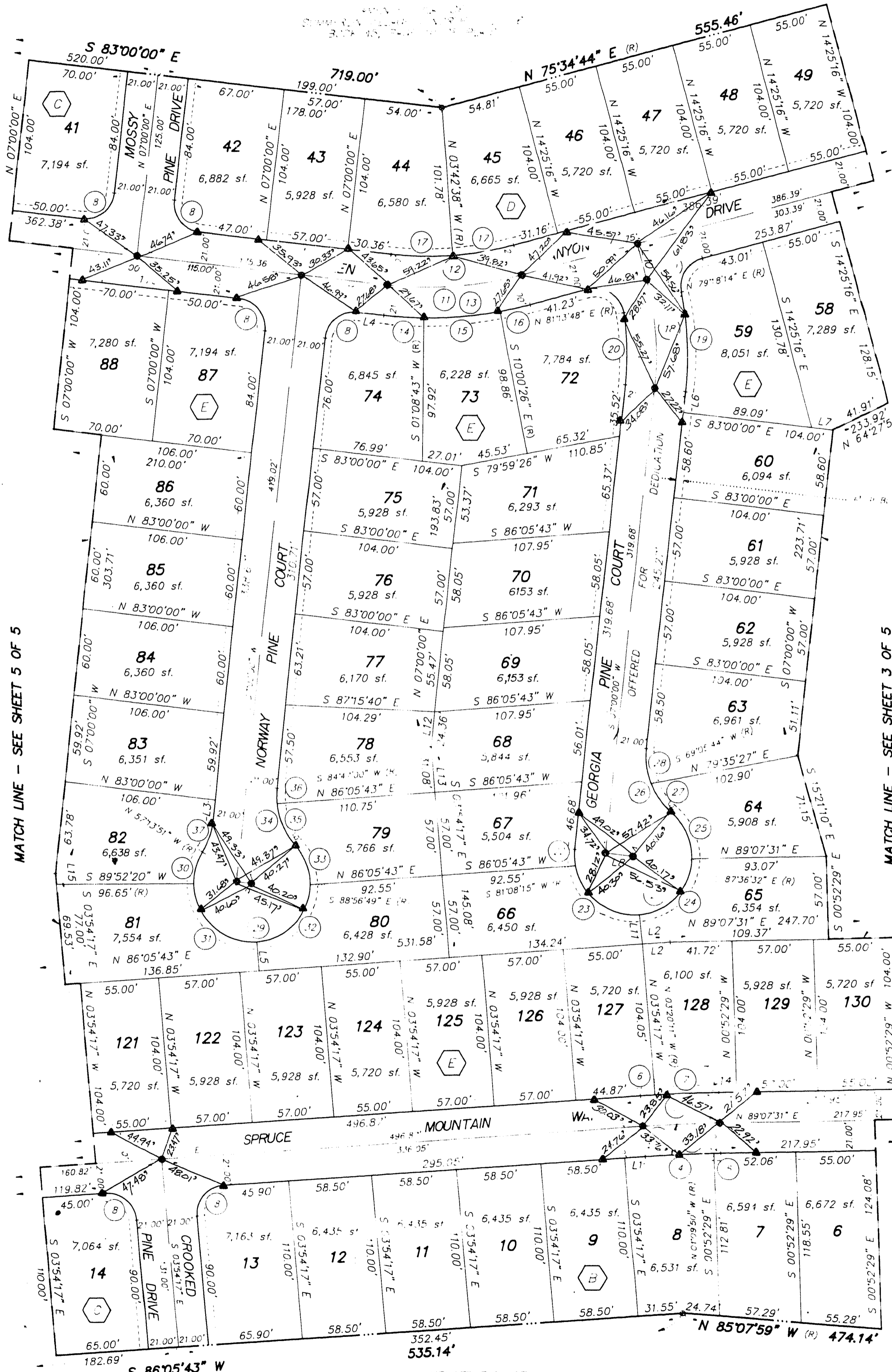


EVERGREEN IN THE HILLS AT SUMMERLIN

BY LEWIS HOMES

BEING A SUBDIVISION OF LOT 7 OF "AMENDED PLAT OF SUMMERLIN VILLAGE 1 NORTH" AS SHOWN BY MAP THEREOF ON FILE IN BOOK 45, PAGE 10 OF PLATS IN THE CLARK COUNTY RECORDER'S OFFICE, CLARK COUNTY, NEVADA, LYING WITHIN SECTIONS 19 AND 20, T. 20 S., R. 60 E., M.D.M., CITY OF LAS VEGAS, CLARK COUNTY, NEVADA.



NOTE
 FOR SIDE PROPERTY LINES: SET CONCRETE NAIL AND TIN IN THE REAR WALL ON THE PROPERTY LINE PROJECTED. SET SAWCUT IN THE BACK OF CURB AT THE FRONT OF THE LOT ON THE PROPERTY LINE PROJECTED.

SETBACK REQUIREMENTS
 FRONT YARD 18'
 REAR YARD 5'
 SIDE YARD 5'
 SIDE YARD AT CORNER 5'

LINE	BEARING	DISTANCE
L1	N 86°05'41" E	15.15'
L2	N 86°05'41" E	19.63'
L3	S 07°00'00" W	14.73'
L4	N 83°00'00" W	18.18'
L5	S 03°54'17" E (R)	20.00'
L6	S 07°00'00" W	14.91'
L7	N 83°00'00" W	14.91'
L8	N 83°00'00" W (R)	19.50'
L9	N 83°00'00" W (R)	10.50'
L10	N 14°25'16" E	25.34'
L11	S 03°54'17" E (R)	20.00'
L12	N 07°00'00" E	24.36'
L13	S 03°54'17" E	31.08'
L14	N 89°07'31" E	11.97'
L15	S 03°54'17" E (R)	7.47'

CURVE	DELTA	RADIUS	LENGTH	TANGENT
1	03°01'48"	1000.00'	52.88'	26.45'
2	03°01'48"	1021.00'	53.99'	27.00'
3	03°01'48"	979.00'	51.77'	25.89'
4	02°44'27"	979.00'	46.83'	23.42'
5	00°17'21"	979.00'	4.94'	2.47'
6	00°30'28"	1021.00'	10.13'	5.06'
7	02°27'42"	1021.00'	43.87'	21.94'
8	90°00'00"	20.00'	31.42'	20.00'
9	95°39'04"	20.00'	33.19'	22.08'
10	86°16'30"	20.00'	30.12'	18.74'
11	21°25'16"	250.00'	93.47'	47.29'
12	21°25'16"	229.00'	85.62'	43.31'
13	21°25'16"	271.00'	101.32'	51.26'
14	25°51'55"	271.00'	27.69'	13.86'
15	11°09'09"	271.00'	52.75'	26.46'
16	04°24'50"	271.00'	20.88'	10.44'
17	04°24'50"	229.00'	42.81'	21.47'
18	21°25'16"	200.00'	74.77'	37.83'
19	17°41'46"	221.00'	68.26'	34.40'
20	15°48'12"	178.00'	49.72'	24.79'
21	23°15'55"	40.50'	166.71'	84.25'
22	15°51'45"	40.50'	11.21'	5.64'
23	86°18'34"	40.50'	61.01'	37.97'
24	82°26'13"	40.50'	58.27'	35.48'
25	50°23'31"	40.50'	35.84'	19.19'
26	55°18'55"	50.00'	48.27'	26.20'
27	27°24'39"	50.00'	23.92'	12.19'
28	86°16'30"	50.00'	24.35'	12.42'
29	25°14'02"	40.50'	179.41'	91.41'
30	32°51'49"	40.50'	23.25'	11.96'
31	93°46'37"	40.50'	66.29'	33.26'
32	85°02'32"	40.50'	60.11'	31.14'
33	42°06'04"	40.50'	29.76'	15.59'
34	48°02'53"	50.00'	41.93'	22.29'
35	35°49'53"	50.00'	31.27'	16.16'
36	12°13'00"	50.00'	10.66'	5.35'
37	25°46'09"	50.00'	22.49'	11.44'

LEGEND

- SET 3" REBAR AND ALUM. PLATE STAMPED PLS. 7755 W/ ALUMINUM CAP PLS. N. TOP OF CURB (UNLESS OTHERWISE NOTED)
- POINT NOT FOUND OR SET
- 14 LOT NUMBER
- COMMON LOT NUMBER
- BLOCK NUMBER
- SUBP. NUMBER
- LINE EASEMENT NUMBER
- SUBDIVISION BOUNDARY LINE
- STREET CENTERLINE
- ▲ SET 2" ALUMINUM REFERENCE MARKER STAMPED PLS. 7755