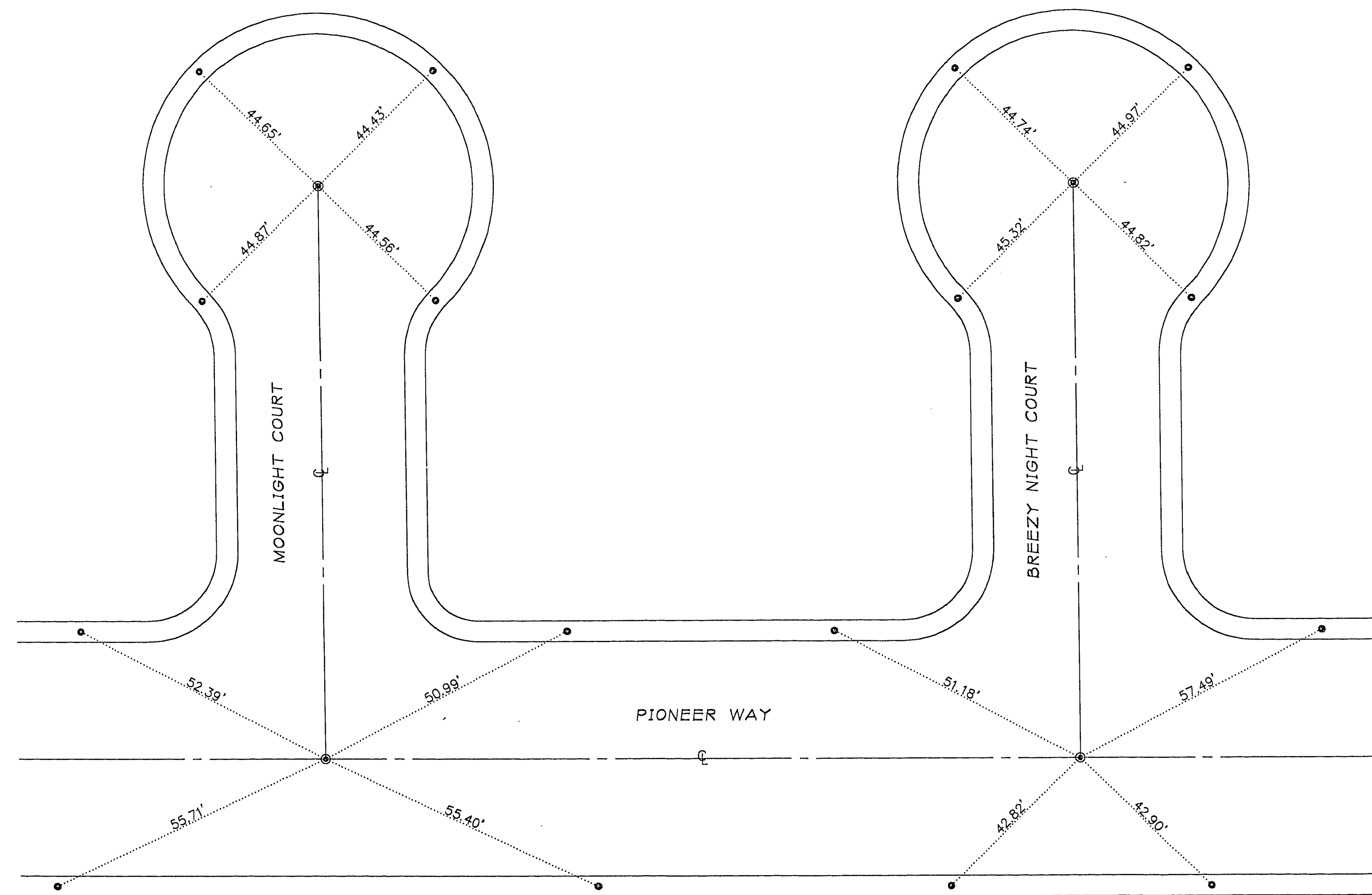


SURVEYOR'S CERTIFICATE

I, GERALD L. WIRTHLIN, A PROFESSIONAL LAND SURVEYOR IN THE STATE OF NEVADA, DO HEREBY CERTIFY THAT THE MONUMENTS HAVE BEEN SET AND THE TIE DISTANCES ESTABLISHED AS SHOWN HEREON. THIS SURVEY WAS COMPLETED ON JANUARY 20, 1993.

GERALD L. WIRTHLIN
PROFESSIONAL LAND SURVEYOR
NEVADA CERTIFICATE No. 7008

Gerald L. Wirthlin
2/16/93



LEGEND

- SET 5/8" REBAR W/ ~~PLS~~ ^{ALUM.} CAP PLS 7008
- SET 1 1/2" BRASS DISK W/ PLS 7008 STAMPED IN TOP
- CENTERLINE
- BOUNDARY LINE
- TIE DIMENSION

MONUMENTATION / TIE MAP

A PORTION OF THE NORTH HALF OF THE NORTH WEST QUARTER
OF SECTION 3, TOWNSHIP 20 SOUTH, RANGE 60 EAST, M.D.B. & M.,
CLARK COUNTY, NEVADA

EXECUTIVE ESTATES UNIT 2 & 3



SOUTHWEST SURVEYING, INC.
GERALD "CROCKETT" WIRTHLIN
PLS #7008

399-5664
OFFICE
378-9362
MOBILE

9-16-93

058-4078-243