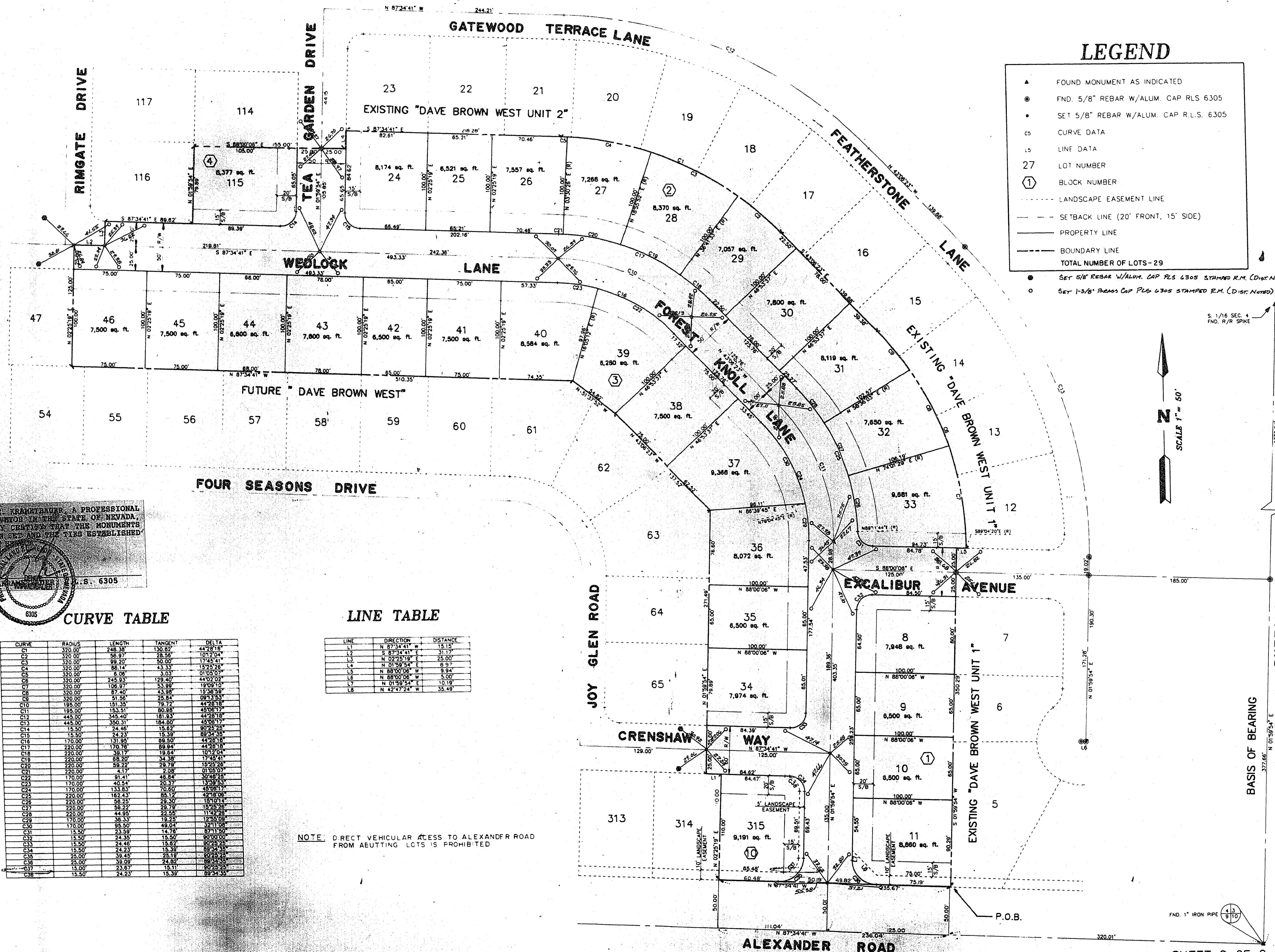


BOOK 900514

00607

# MONUMENT TIE MAP DAVE BROWN WEST UNIT 3

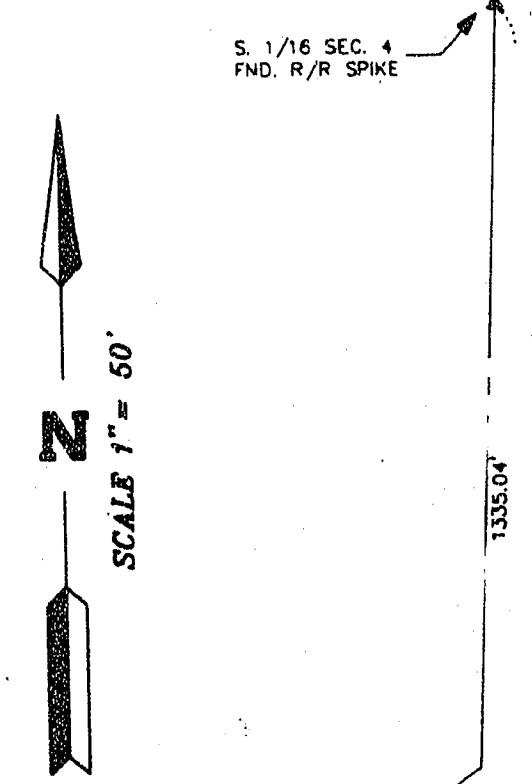
PORTION OF THE SOUTH HALF (S 1/2) OF THE SOUTHEAST QUARTER (SE 1/4) OF SECTION 4, T. 20 S., R. 60 E. M.D.M.  
CITY OF LAS VEGAS, CLARK COUNTY, NEVADA



### LEGEND

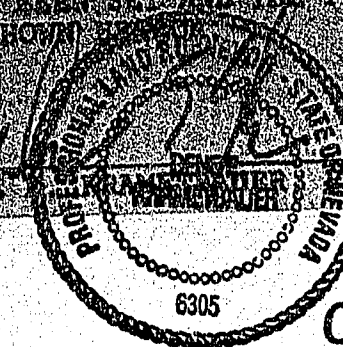
- ▲ FOUND MONUMENT AS INDICATED
- FND. 5/8" REBAR W/ALUM. CAP PLS 6305
- SET 5/8" REBAR W/ALUM. CAP R.L.S. 6305
- CS CURVE DATA
- LS LINE DATA
- 27 LOT NUMBER
- ① BLOCK NUMBER
- LANDSCAPE EASEMENT LINE
- SETBACK LINE (20' FRONT, 15' SIDE)
- PROPERTY LINE
- BOUNDARY LINE
- TOTAL NUMBER OF LOTS-29

- SET 5/8" REBAR W/ALUM. CAP PLS 6305 STAMPED R.M. (DIST. NOTED)
- SET 1-3/8" REBAR CAP PLS 6305 STAMPED R.M. (DIST. NOTED)



I, DEBBIE M. TRAMER, A PROFESSIONAL LAND SURVEYOR IN THE STATE OF NEVADA, DO HEREBY CERTIFY THAT THE MONUMENTS HAVE BEEN SET AND THE TIES ESTABLISHED AS SHOWN.

DEBBIE M. TRAMER  
S.S. 6305



### CURVE TABLE

CURVE	RADIUS	LENGTH	TANGENT	DELTA
C1	320.00	248.39	130.97	44.7819
C2	320.00	58.97	28.56	10.7204
C3	320.00	89.20	43.00	15.2526
C4	320.00	86.14	43.33	15.2526
C5	320.00	8.00	3.03	0.9507
C6	320.00	248.39	130.97	44.7819
C7	320.00	106.97	53.89	18.0910
C8	320.00	87.40	43.89	15.3284
C9	320.00	51.50	25.84	9.3573
C10	185.00	151.35	75.72	24.7818
C11	185.00	153.31	76.88	25.0171
C12	145.00	125.40	61.83	20.2818
C13	445.00	350.31	164.80	63.0017
C14	15.50	24.46	12.62	4.0729
C15	15.50	24.23	12.39	3.9428
C16	170.00	131.98	66.29	22.8114
C17	170.00	170.78	85.84	29.7818
C18	220.00	281.79	138.84	47.7204
C19	220.00	183.20	94.38	32.8114
C20	220.00	58.22	28.78	10.2926
C21	220.00	4.17	2.08	0.6284
C22	170.00	81.41	40.84	14.0729
C23	170.00	40.54	20.37	7.0364
C24	170.00	133.33	67.38	23.5204
C25	220.00	182.43	93.12	32.8114
C26	220.00	58.22	28.78	10.2926
C27	220.00	170.78	85.84	29.7818
C28	220.00	44.95	22.50	7.0364
C29	170.00	38.33	19.11	5.9428
C30	170.00	35.50	17.60	5.4284
C31	15.50	23.99	12.16	3.8114
C32	15.50	24.46	12.39	3.9428
C33	15.50	24.46	12.39	3.9428
C34	15.50	24.46	12.39	3.9428
C35	15.50	24.46	12.39	3.9428
C36	15.50	24.46	12.39	3.9428
C37	15.50	24.46	12.39	3.9428
C38	15.50	24.23	12.39	3.9428
C39	15.50	24.23	12.39	3.9428

### LINE TABLE

LINE	DIRECTION	DISTANCE
L1	N 87°34'41" W	15.15'
L2	S 87°34'41" E	31.17'
L3	N 02°20'19" E	25.00'
L4	N 01°59'54" E	6.97'
L5	N 88°00'06" W	9.84'
L6	N 88°00'06" W	5.00'
L7	N 01°59'54" E	10.18'
L8	N 52°27'24" W	35.49'

NOTE: DIRECT VEHICULAR ACCESS TO ALEXANDER ROAD FROM ADJUTING LOTS IS PROHIBITED

9-6-58 BOOK 46 PAGE 7  
058-4077-3