

# EXPRESSIONS

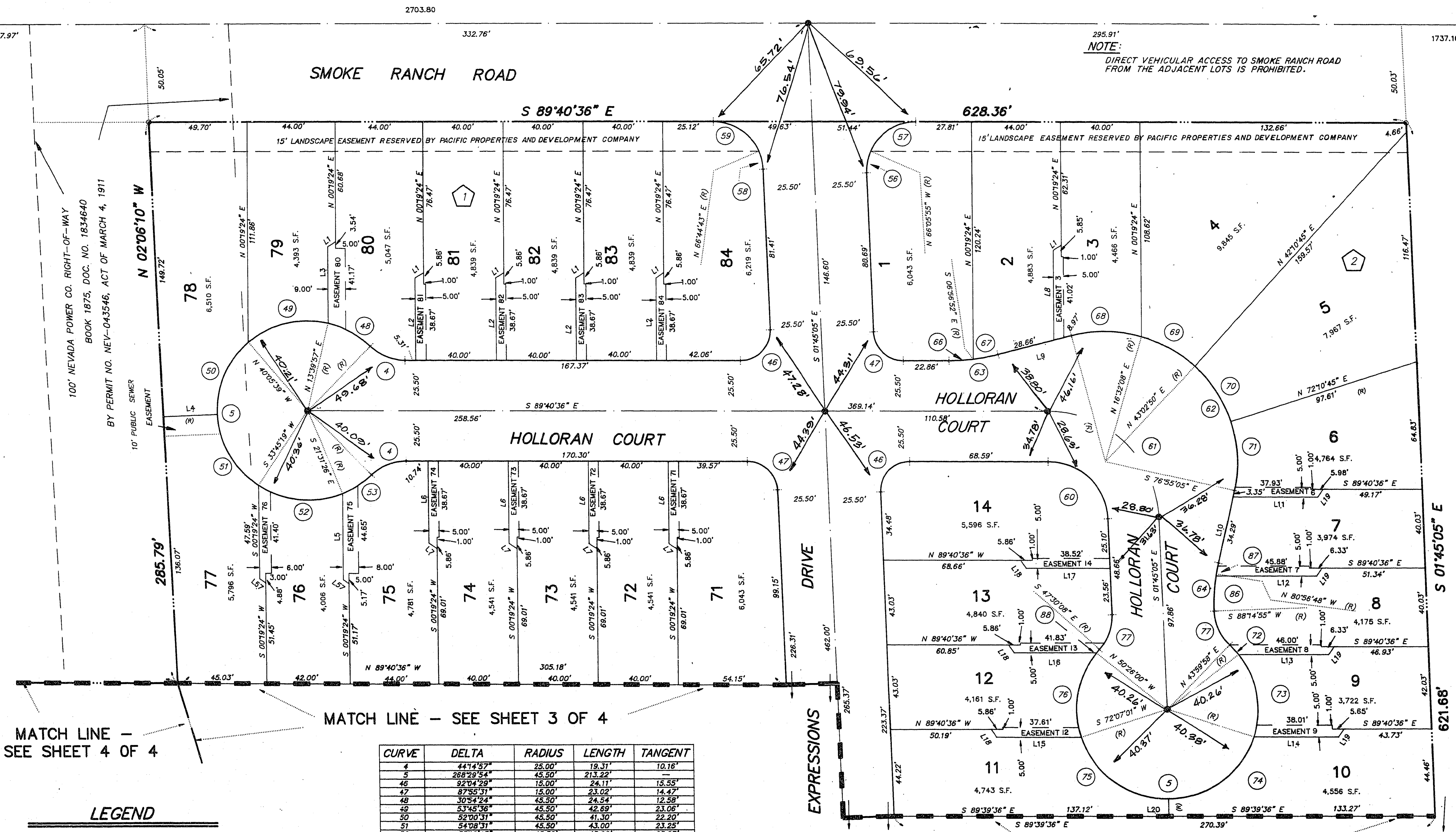
## MONUMENT TIE MAP

A SUBDIVISION OF PARCEL 2 ON FILE IN FILE 61, PAGE 86 OF PARCEL MAPS  
IN THE CLARK COUNTY RECORDER'S OFFICE, CLARK COUNTY, NEVADA

LYING WITHIN THE NW1/4 OF SECTION 22, T. 20 S., R. 60 E., M.D.M.,  
CITY OF LAS VEGAS, CLARK COUNTY, NEVADA

SECTION 16 | 15  
CORNER 27 | 22  
NAIL & TIN  
FOUND

1/4 15  
FOUND  
BRASS CAP



MATCH LINE - SEE SHEET 4 OF 4

MATCH LINE - SEE SHEET 3 OF 4

MATCH LINE - SEE SHEET 3 OF 4

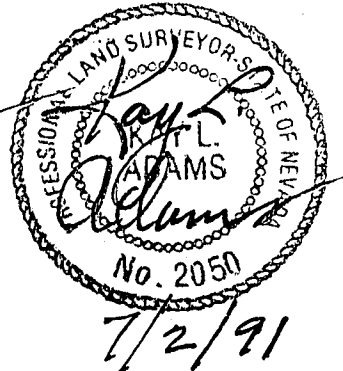
- LEGEND**
- SET 5/8" REBAR AND ALLUM. CAP STAMPED R.L.S. 2050 W/ BRASS CAP TIES IN TOP OF CURB (UNLESS OTHERWISE NOTED)
  - ⊙ FOUND MONUMENTATION AS SHOWN AND DESCRIBED
  - POINT NOT FOUND OR SET
  - 15 LOT NUMBER  
TOTAL LOTS IN SUBDIVISION = 84
  - A BLOCK NUMBER
  - 59 CURVE NUMBER
  - L1 LINE SEGMENT NUMBER
  - SUBDIVISION BOUNDARY LINE
- NOTE:**  
FRONT SETBACK: 10' MINIMUM TO BUILDING  
16' MINIMUM TO GARAGE  
SIDE SETBACK ON CORNER 10' MINIMUM
- (TYP) EASEMENT 75 = PRIVATE EASEMENT

CURVE	DELTA	RADIUS	LENGTH	TANGENT
4	447'45.7"	25.00'	19.31'	10.16'
5	289'25.4"	45.50'	213.22'	4.82'
6	92'04.29"	15.00'	24.11'	15.55'
7	87'55.91"	15.00'	23.02'	14.42'
8	30'55.91"	45.50'	24.54'	12.25'
9	53'05.96"	45.50'	42.69'	23.06'
10	52'00.31"	45.50'	41.30'	22.20'
11	54'09.91"	45.50'	43.00'	23.25'
12	56'14.45"	45.50'	43.90'	23.81'
13	22'24.07"	45.50'	17.79'	9.01'
14	87'55.91"	25.00'	36.36'	24.11'
15	92'04.29"	25.00'	40.19'	25.02'
16	25'39.10"	25.00'	11.19'	5.69'
17	66'25.19"	25.00'	28.98'	16.37'
18	21'50.12"	25.00'	4.75'	2.54'
19	66'25.19"	25.00'	28.98'	16.37'
20	87'55.91"	30.00'	46.04'	28.93'
21	87'55.91"	55.50'	85.17'	53.53'
22	117'34.32"	65.00'	135.46'	108.96'
23	14'50.01"	95.00'	24.60'	12.37'
24	14'50.00"	95.00'	24.59'	12.37'
25	07'16.16"	95.00'	12.06'	6.24'
26	07'13.45"	95.00'	12.54'	6.59'
27	31'02.45"	66.00'	35.76'	18.33'
28	26'30.42"	66.00'	30.54'	15.55'
29	29'17.56"	66.00'	33.56'	17.21'
30	30'54.11"	66.00'	35.60'	18.24'
31	08'26.09"	45.50'	6.70'	3.38'
32	33'55.09"	45.50'	44.37'	24.13'
33	71'29.40"	45.50'	56.75'	32.75'
34	72'19.09"	45.50'	57.43'	33.25'
35	72'59.09"	45.50'	58.02'	33.75'
36	73'38.09"	45.50'	58.61'	34.25'
37	44'14.57"	25.00'	15.31'	10.16'
38	10'48.17"	95.00'	17.91'	8.98'
39	04'01.43"	95.00'	6.68'	3.54'
40	02'55.52"	45.50'	2.33'	1.16'

**SURVEYOR'S CERTIFICATE**

I, KAY L. ADAMS, A PROFESSIONAL LAND SURVEYOR, REGISTERED IN THE STATE OF NEVADA, DO HEREBY CERTIFY THAT THE MONUMENTS HAVE BEEN SET AND TIES ESTABLISHED AS SHOWN HEREON.

*Kay L. Adams*  
KAY L. ADAMS  
PROFESSIONAL LAND SURVEYOR  
NEVADA CERTIFICATE NO. 2050



LINE	DIRECTION	DISTANCE
L1	N 56°19'24" E	4.82'
L2	N 00°19'24" E	41.83'
L3	N 00°19'24" E	38.82'
L4	S 87°33'50" W	27.43'
L5	S 00°19'24" W	43.63'
L6	S 00°19'24" W	43.63'
L7	S 55°40'36" E	4.82'
L8	N 00°19'24" E	45.49'
L9	N 75°29'31" E	37.63'
L10	N 13°04'55" E	37.63'
L11	S 89°40'36" E	42.32'
L12	S 89°40'36" E	42.32'
L13	S 89°40'36" E	42.32'
L14	S 89°40'36" E	42.32'
L15	N 89°40'36" W	42.32'
L16	N 89°40'36" W	42.32'
L17	N 89°40'36" W	42.32'
L18	N 33°40'36" W	4.82'
L19	N 34°20'24" E	4.82'
L20	S 00°19'24" E	8.65'
L21	S 55°40'36" E	3.62'