

DESERT PALMS -- UNIT No. 2

A DIVISION OF LOT 1 OF PARCEL MAP FILE 58, PAGE 82, LYING IN THE S.E. 1/4 OF THE S.W. 1/4 OF SECTION 22,
T. 20 S., R. 60 E., M.D.B. & M., CITY OF LAS VEGAS, COUNTY OF CLARK, STATE OF NEVADA

ALL MONUMENTS SET BY KENNETH L. KREEGER, P.L.S. 8305, PER CERTIFICATE OF AMENDMENT FILED WITH THE CITY OF LAS VEGAS AND RECORDED IN BOOK 900319 AS INST. 00743 OFFICIAL RECORDS, CLARK COUNTY, NEVADA.

MONUMENTATION CERTIFICATE

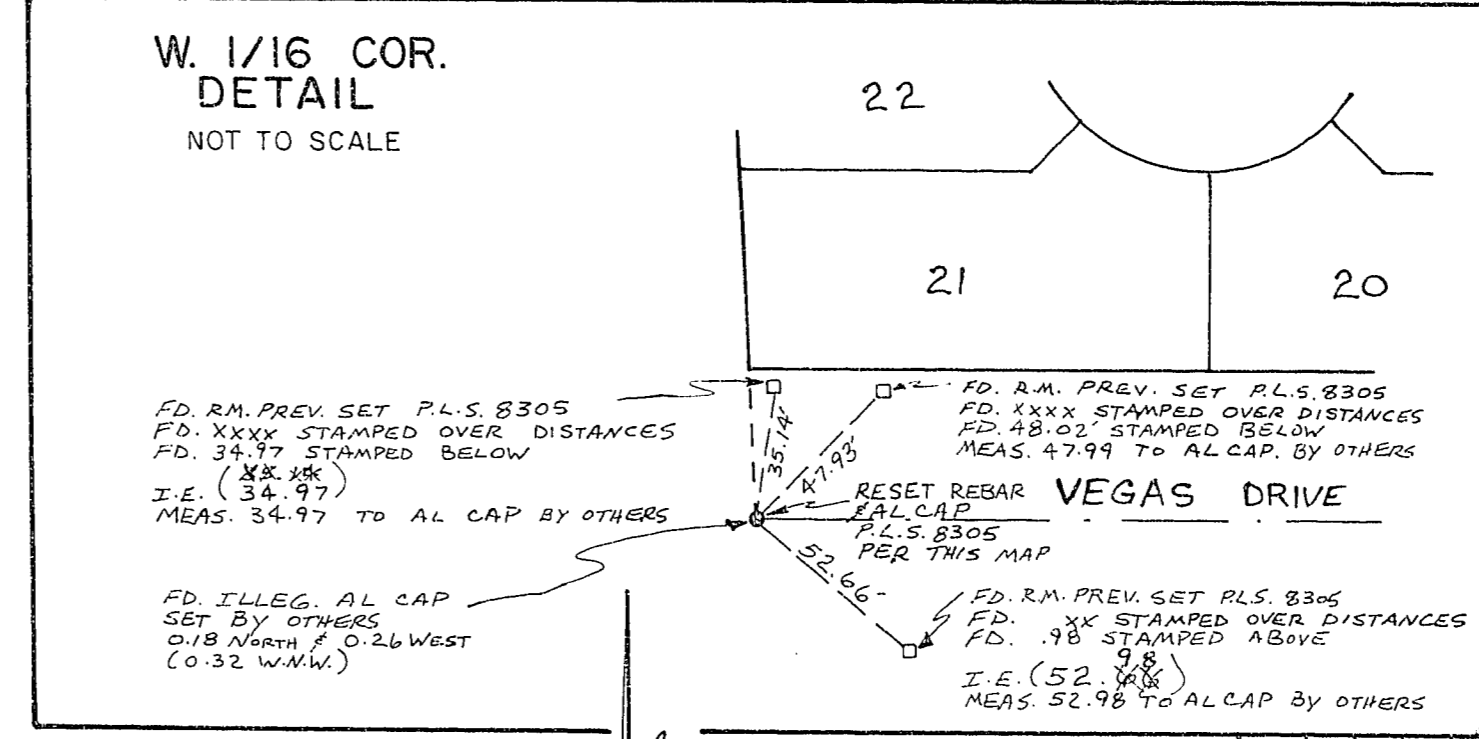
I, KENNETH L. KREEGER, A PROFESSIONAL LAND SURVEYOR DULY REGISTERED IN THE STATE OF NEVADA, DO HEREBY CERTIFY THAT THE MONUMENTS HAVE BEEN SET AND THE TIE DISTANCES ESTABLISHED AS SHOWN HEREON.

THIS SURVEY WAS COMPLETED ON APRIL 19, 1990

Kenneth L. Kreeger
KENNETH L. KREEGER, P.L.S. NO. 8305

Kenneth L. Kreeger

P.O.P.
COULD NOT SET PER LEGEND SET CONC. NAIL & BRASS TAG MKD. PLS 8305 0.40 WEST 0.32 SOUTH OF WALL



CURVE DATA TABLE:

CURVE	ARC	DELTA	RADIUS	TAN LENGTH
C1	31.42	90°00'00"	20.00	20.00
C2	23.58	90°00'00"	15.00	15.00
C3	15.74	29°43'28"	15.00	3.38
C4	15.74	148°56'28"	15.00	3.38
C5	15.56	47°58'39"	15.00	8.87
C6	219.14	89°00'00"	20.00	20.00
C7	12.58	47°58'39"	15.00	8.87
C8	12.58	90°00'00"	15.00	15.00
C9	31.42	90°00'00"	20.00	20.00
C10	23.58	90°00'00"	15.00	15.00
C11	15.74	29°43'28"	15.00	3.38
C12	15.74	148°56'28"	15.00	3.38
C13	15.56	47°58'39"	15.00	8.87
C14	219.14	89°00'00"	20.00	20.00
C15	12.58	47°58'39"	15.00	8.87
C16	12.58	90°00'00"	15.00	15.00
C17	31.42	90°00'00"	20.00	20.00
C18	23.58	90°00'00"	15.00	15.00
C19	15.74	29°43'28"	15.00	3.38
C20	15.74	148°56'28"	15.00	3.38
C21	15.56	47°58'39"	15.00	8.87
C22	219.14	89°00'00"	20.00	20.00
C23	12.58	47°58'39"	15.00	8.87
C24	12.58	90°00'00"	15.00	15.00
C25	31.42	90°00'00"	20.00	20.00
C26	23.58	90°00'00"	15.00	15.00
C27	15.74	29°43'28"	15.00	3.38
C28	15.74	148°56'28"	15.00	3.38
C29	15.56	47°58'39"	15.00	8.87
C30	219.14	89°00'00"	20.00	20.00
C31	12.58	47°58'39"	15.00	8.87

LINE DATA TABLE:

LINE	BEARING	DISTANCE
L1	S 89°21'30" E	31.42
L2	S 0°38'30" W	40.00
L3	N 48°59'11" E	19.83
L4	S 45°18'21" E	19.83
L5	N 48°59'11" E	19.83
L6	S 89°21'30" E	35.00
L7	S 45°18'21" E	19.83
L8	N 0°38'30" E	92.00
L9	S 0°38'30" W	40.00
L10	N 0°38'30" E	37.00
L11	S 0°38'30" W	37.00
L12	N 0°38'30" E	37.00
L13	N 0°38'30" E	37.00
L14	N 0°38'30" E	37.00
L15	S 0°38'30" W	37.00
L16	S 0°38'30" W	37.00
L17	N 0°38'30" E	11.81
L18	S 89°21'30" W	2.00
L19	S 0°38'30" W	2.00
L20	S 0°38'30" E	2.00
L21	S 0°38'30" E	2.00
L22	N 0°38'30" E	2.00
L23	N 0°38'30" E	2.00

LEGEND:

- FD. REBAR + AL. CAP R.L.S. 7190 PER BOOK 39, PAGE 41 UNLESS NOTED OTHERWISE.
- SET REBAR + AL. CAP R.L.S. 7190 WITH BRASS CAP TIES IN TOP OF CURB.
- FD. REBAR + PLASTIC CAP R.L.S. 7190 PER BK. 39, PAGE 41.
- SET REBAR + PLASTIC CAP R.L.S. 7190.
- TYPICAL LOT NUMBER.
- BUILDING SET-BACK LINE (10' FRONT, 10' CORNER, 10' GARAGE).
- RADIAL LINE BEARING.
- LINE DATA (SEE TABLE).
- CURVE DATA (SEE TABLE).
- (TOTAL 62 LOTS THIS MAP)
- 2" BRASS CAP REFERENCE MONUMENT SET

BASIS OF BEARINGS:

THAT PORTION OF THE CENTERLINE OF VEGAS DRIVE, BEING THE SOUTH LINE OF SECTION 22, T. 20 S., R. 60 E., M.D.B. & M., BETWEEN THE MONUMENTS FOUND AS SHOWN HEREON, AND NOTED AS N. 89°21'30" W. ON PARCEL MAP FILE 58, PAGE 82, CLARK COUNTY RECORDS.

NOTES:

- THERE SHALL BE NO DIRECT VEHICULAR ACCESS TO VEGAS DRIVE FROM ADJUTING LOTS.
- BOUNDARY DIMENSIONS ARE PER PARCEL MAP FILE 58, PAGE 82 AND BOOK 39, PAGE 41 OF PLATS, AND MEASURED.

COULD NOT SET PER LEGEND SET CONC. NAIL & BRASS TAG MKD. PLS 8305 ON TOP OF BLOCK WALL
RESET REBAR + AL. CAP R.L.S. 8305

W. 1/16 COR. DETAIL
FD. P.K. NAIL PER BK. 41, PG. 39 OF PLATS, REPLACED WITH 7/8" REBAR + AL. CAP R.L.S. 7190 WITH BRASS CAP TIES.

10' RW VACATED BY DESK RECORDED RES. 22, MEAS. 40 DOC. N1 00806.

S. VACOR. SEC. 22
FD. BRASS CAP R.L.S. 6201
REL. 0111 PER BK. 41, PG. 39 OF PLATS.