

DESERT PALMS -- UNIT NO. 1

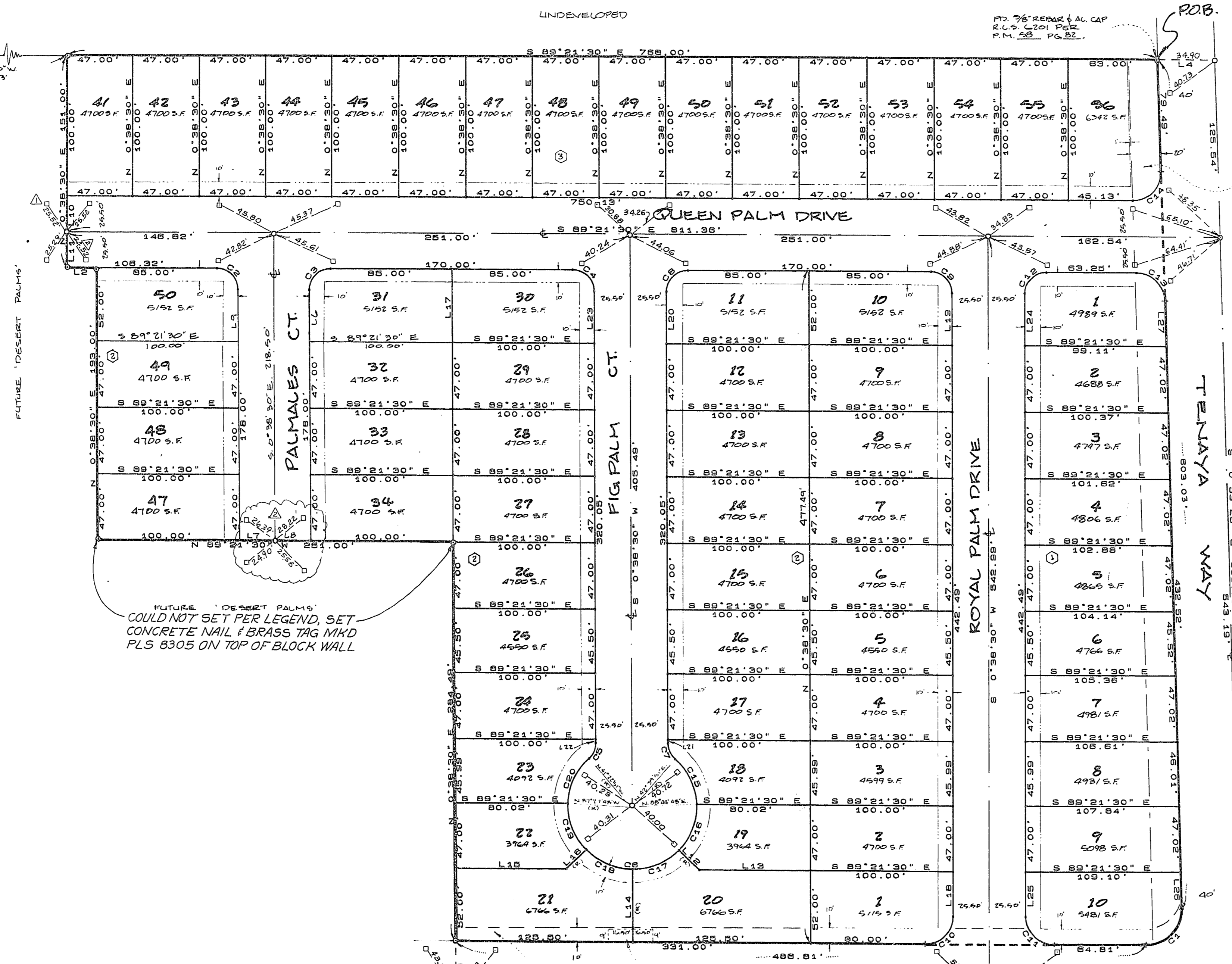
A DIVISION OF LOT 1 OF PARCEL MAP FILE 58, PAGE 82 LYING IN THE S.E. 1/4 OF THE S.W. 1/4 OF SECTION 22, T. 20 S., R. 60 E., CITY OF LAS VEGAS, COUNTY OF CLARK, STATE OF NEVADA

CURVE TABLE:

CURVE	ARC	DELTA	RADIUS	TAN LENGTH
C1	39.94	91°31'55"	25.00	25.88
C2	23.56	90°00'00"	15.00	15.00
C3	23.56	90°00'00"	15.00	15.00
C4	23.56	90°00'00"	15.00	15.00
C5	12.56	47°59'39"	15.00	8.87
C6	213.14	273°57'18"	45.50	19.35
C7	12.56	47°59'39"	15.00	8.87
C8	23.56	90°00'00"	15.00	15.00
C9	23.56	90°00'00"	15.00	15.00
C10	31.42	90°00'00"	20.00	20.00
C11	23.56	90°00'00"	15.00	15.00
C12	23.56	90°00'00"	15.00	15.00
C13	30.88	89°28'05"	20.00	20.54
C14	31.35	91°31'55"	20.00	19.47
C15	38.80	46°04'57"	45.50	19.35
C16	38.49	45°58'51"	45.50	19.29
C17	38.49	45°58'51"	45.50	19.29
C18	38.49	45°58'51"	45.50	19.29
C19	38.49	45°58'51"	45.50	19.29
C20	38.80	46°04'57"	45.50	19.35

17. 3/8" REBAR & AL. CAP R.L.S. L201 PER P.M. 28 P.G. 82.

17. 3/8" REBAR & AL. CAP R.L.S. L201 PER P.M. 28 P.G. 82.



SCALE: 1" = 50'

W 1/2 OF 40' WIDE NEVADA POWER CO. EASEMENT PER PERMIT N° NEV0416

LEGEND:

- MONUMENTS FOUND AS NOTED.
- SET 3/8" REBAR & PLASTIC CAP, R.L.S. 7140.
- SET 3/8" REBAR & ALUM. CAP, R.L.S. 7140 WITH BRASS CAP TIES IN TOP OF CURB.
- ① TYPICAL BLOCK NUMBER.
- ② TYPICAL LOT NUMBER.
- BUILDING SET BACK LINE: 10' FRONT (16' GARAGE) 10' SIDE (EXCEPT AS NOTED)
- (R) RADIAL LINE BEARING.
- C3 CURVE DATA (SEE TABLE)
- L2 LINE DATA (SEE TABLE)
- 2" BRASS CAP REFERENCE MONUMENT SET

MONUMENTATION CERTIFICATE

I, KENNETH L. KREEGER, A PROFESSIONAL LAND SURVEYOR DULY REGISTERED IN THE STATE OF NEVADA, DO HEREBY CERTIFY THAT THE MONUMENTS HAVE BEEN SET AND THE TIE DISTANCES ESTABLISHED AS SHOWN HEREON.

THIS SURVEY WAS COMPLETED ON APRIL 19, 1990

Kenneth L. Kreeger
KENNETH L. KREEGER, P.L.S. NO. 8305

ALL MONUMENTS SET BY KENNETH L. KREEGER, P.L.S. 8305, PER CERTIFICATE OF AMENDMENT FILED WITH THE CITY OF LAS VEGAS, AND RECORDED IN BOOK 900319 AS INST. 00742 OFFICIAL RECORDS, CLARK COUNTY, NEVADA.

Kenneth L. Kreeger

LINE TABLE:

LINE	BEARING	DISTANCE
L2	N 89°21'30" W	21.38
L3	N 0°38'30" E	40.00
L4	S 89°21'30" E	40.00
L5	S 0°38'30" W	37.00
L6	S 89°21'30" E	25.50
L7	N 0°38'30" E	25.50
L8	N 89°21'30" E	37.00
L9	N 0°38'30" W	25.50
L10	S 0°38'30" W	25.50
L11	S 49°18'51" E	19.83
L12	S 89°21'30" E	75.47
L13	N 0°38'30" E	52.00
L14	N 89°21'30" E	75.47
L15	N 48°38'21" E	19.89
L16	N 0°38'30" E	37.00
L17	N 0°38'30" E	37.00
L18	S 0°38'30" W	2.88
L19	N 0°38'30" E	37.00
L20	S 0°38'30" W	2.88
L21	S 0°38'30" W	2.88
L22	N 0°38'30" E	37.00
L23	S 0°38'30" W	2.88
L24	N 0°38'30" E	37.00
L25	N 0°38'30" E	37.00
L26	N 0°38'30" E	37.00
L27	N 0°38'30" E	37.00

NOTE:

- THERE SHALL BE NO DIRECT VEHICULAR ACCESS TO TENAYA WAY OR VEGAS DRIVE FROM ADJUTING LOTS.
- BOUNDARY DIMENSIONS ARE PER PARCEL MAP FILE 58, PAGE 82, AND MEASURED.

W.K. 22 27 17. 3/8" REBAR & AL. CAP R.L.S. L201 PER P.M. 28 P.G. 82.

VEGAS DRIVE

APPROVED	NO	DATE	BY	REVISION DESCRIPTION
<i>K.L.K.</i>	1	10/10/90	RB	RESET BRASS REF MONS.
<i>K.L.K.</i>	2	10/10/90	RB	CORRECT MAP DISTANCE IN ERROR

4-20-90