

BRONCO STREET GYMNASTIC FACILITY

BENCHMARK

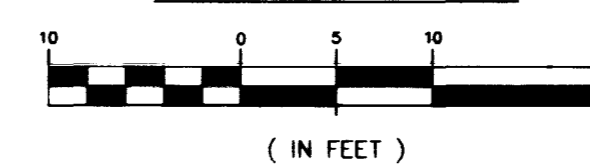
CLV BENCHMARK NO. 11V00 1254  
 RIVET & PLATE IN TOP OF CURB  
 NE CURB RETURN OF CHEYENNE AVE AND MICHAEL WAY  
 ELEV = 686.1680 METERS [NAVD88] (2251.20 FEET)

GEOTECHNICAL REPORT

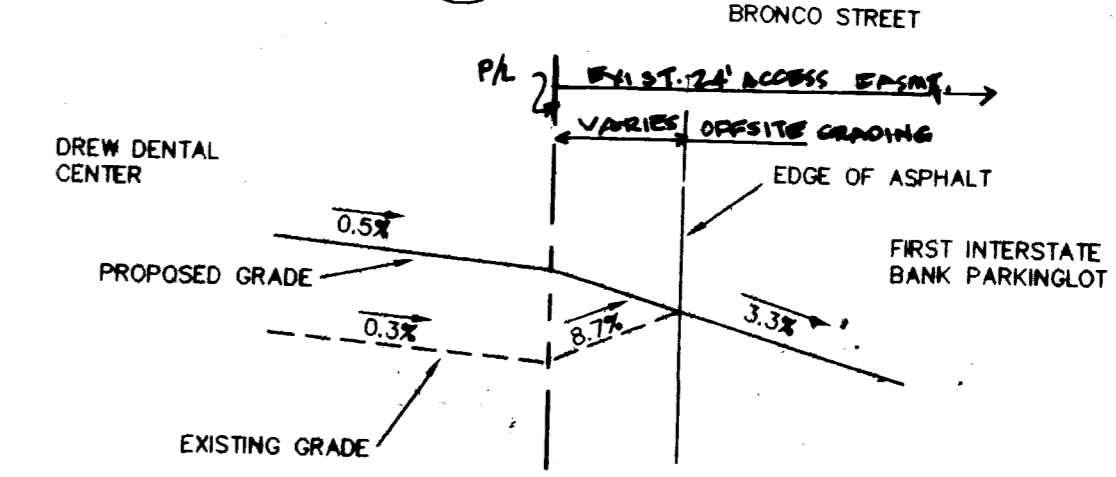
GEOTECHNICAL INVESTIGATION REPORT  
 DENTAL LABORATORY  
 EAST SIDE OF BRONCO STREET  
 ABOUT 470 FEET SOUTH OF THE FUTURE ATWOOD AVENUE  
 LAS VEGAS, NEVADA

BBC ENGINEERING, INC.  
 BBC NO.: B1453  
 SEPTEMBER 14, 1998

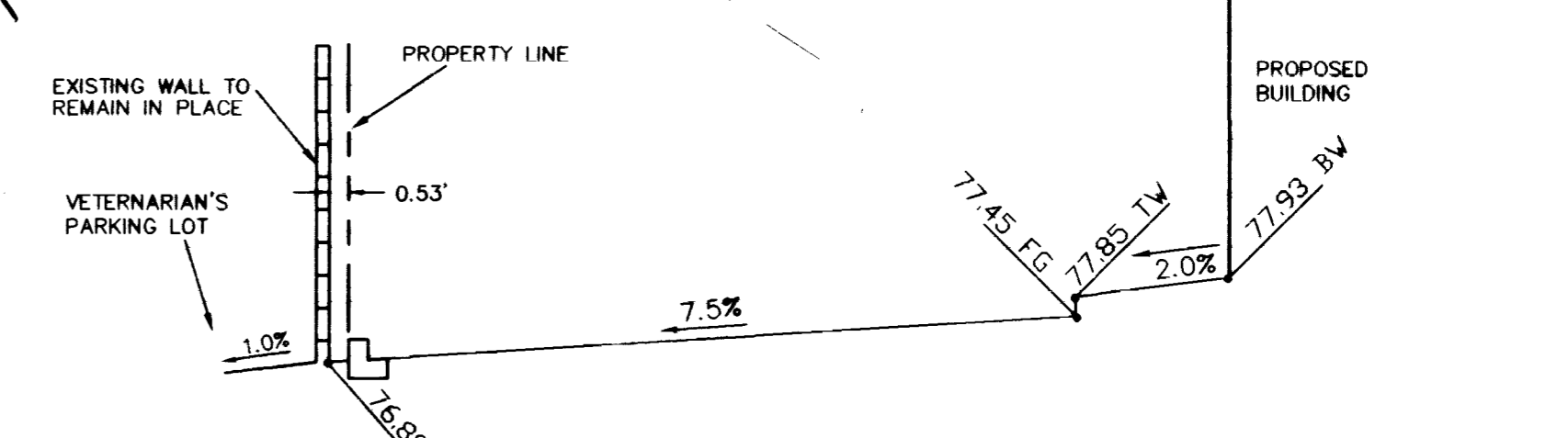
GRAPHIC SCALE



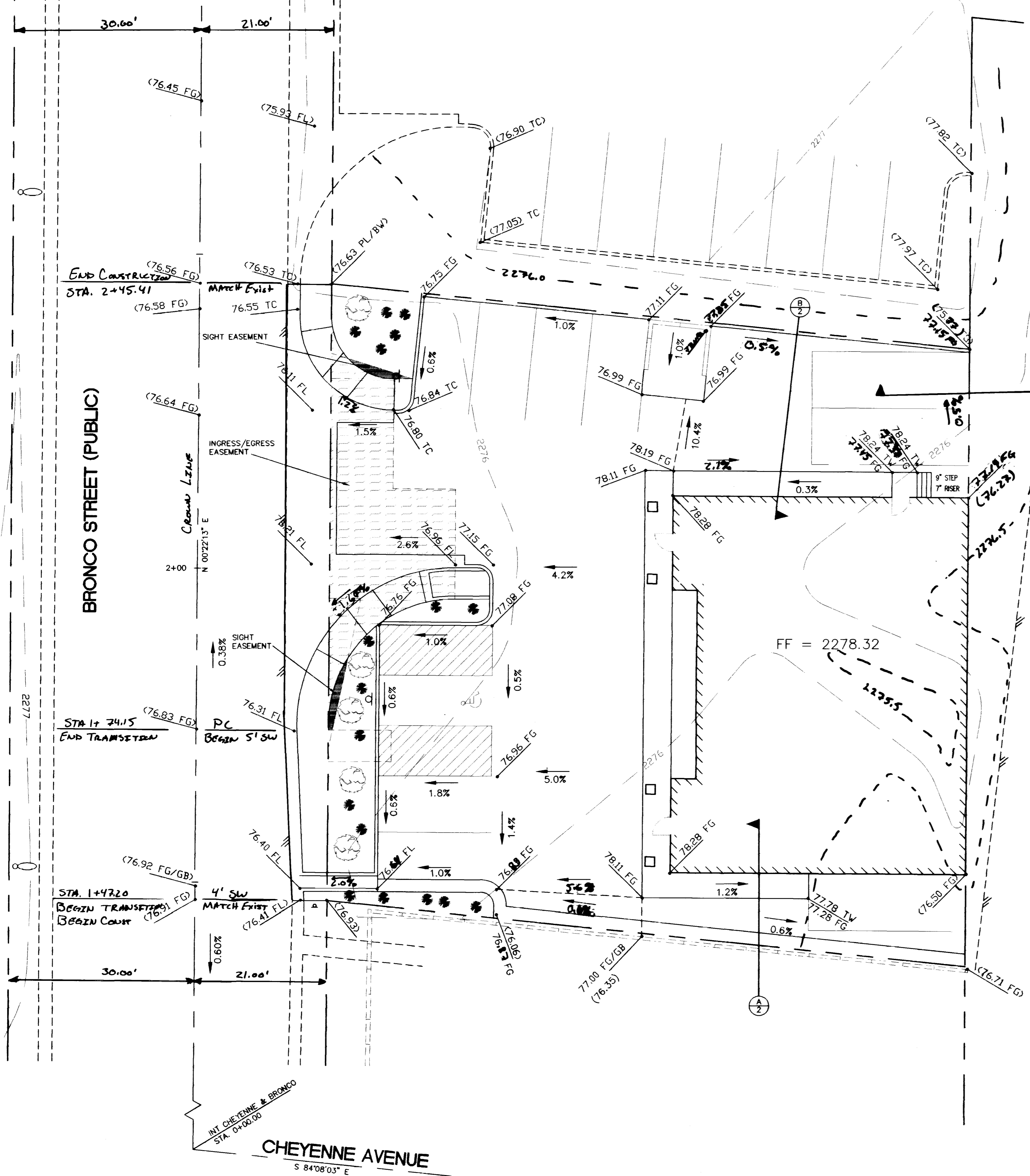
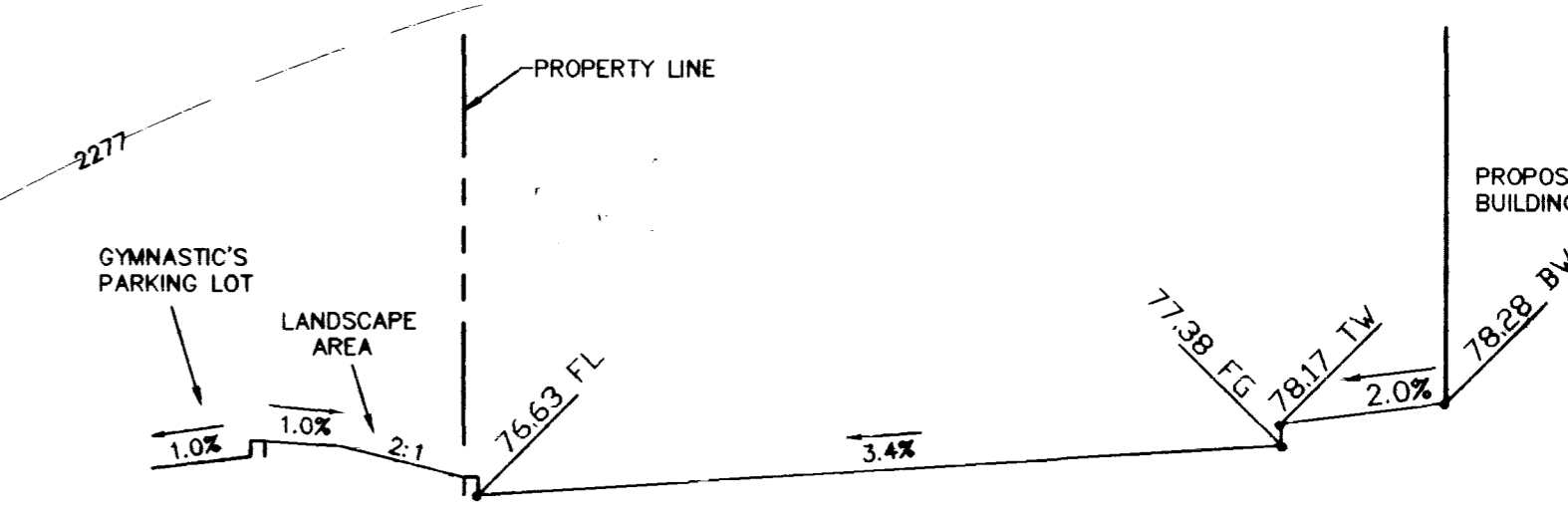
5' RIGHT OF WAY  
 NO SCALE  
 BRONCO STREET



SOUTH SECTION  
 NO SCALE



NORTH SECTION  
 NO SCALE



REVISION	DATE	DESCRIPTION

BRECHLER & BELL CONSULTING ENGINEERS, INC. BRECHLER & BELL CONSULTING ENGINEERS, INC. 19 WEST BROOKS AVENUE SUITE C NORTH LAS VEGAS, NEVADA 89030 702/642-5362	JOB TITLE: DREW DENTAL CENTER SHEET TITLE: GRADING PLAN FIELD BOOK NO. DISK NO. DATE DESIGN DRAWN: OPB 10/14/98 CHECKED PLOTTED: 2/2/99 SCALE HORIZ. 1"=10' VERT. JOB NO. 98999 SHEET NO. 2 OF 3
--	---

