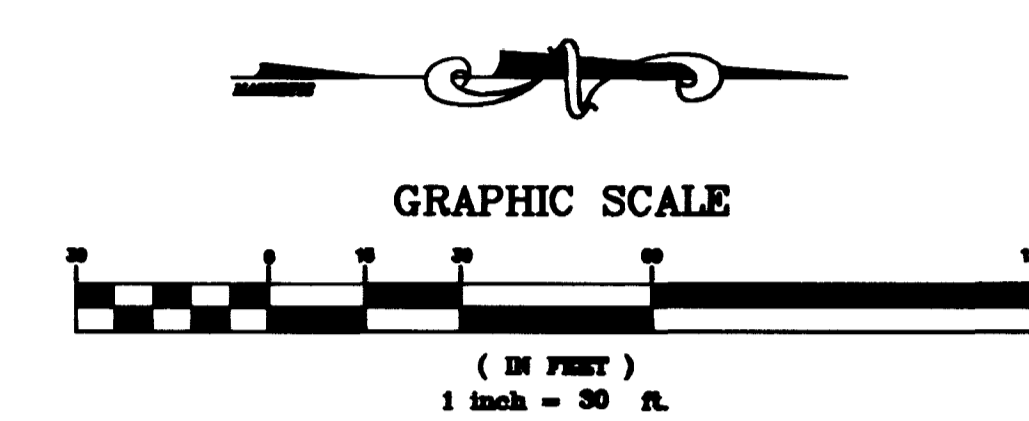


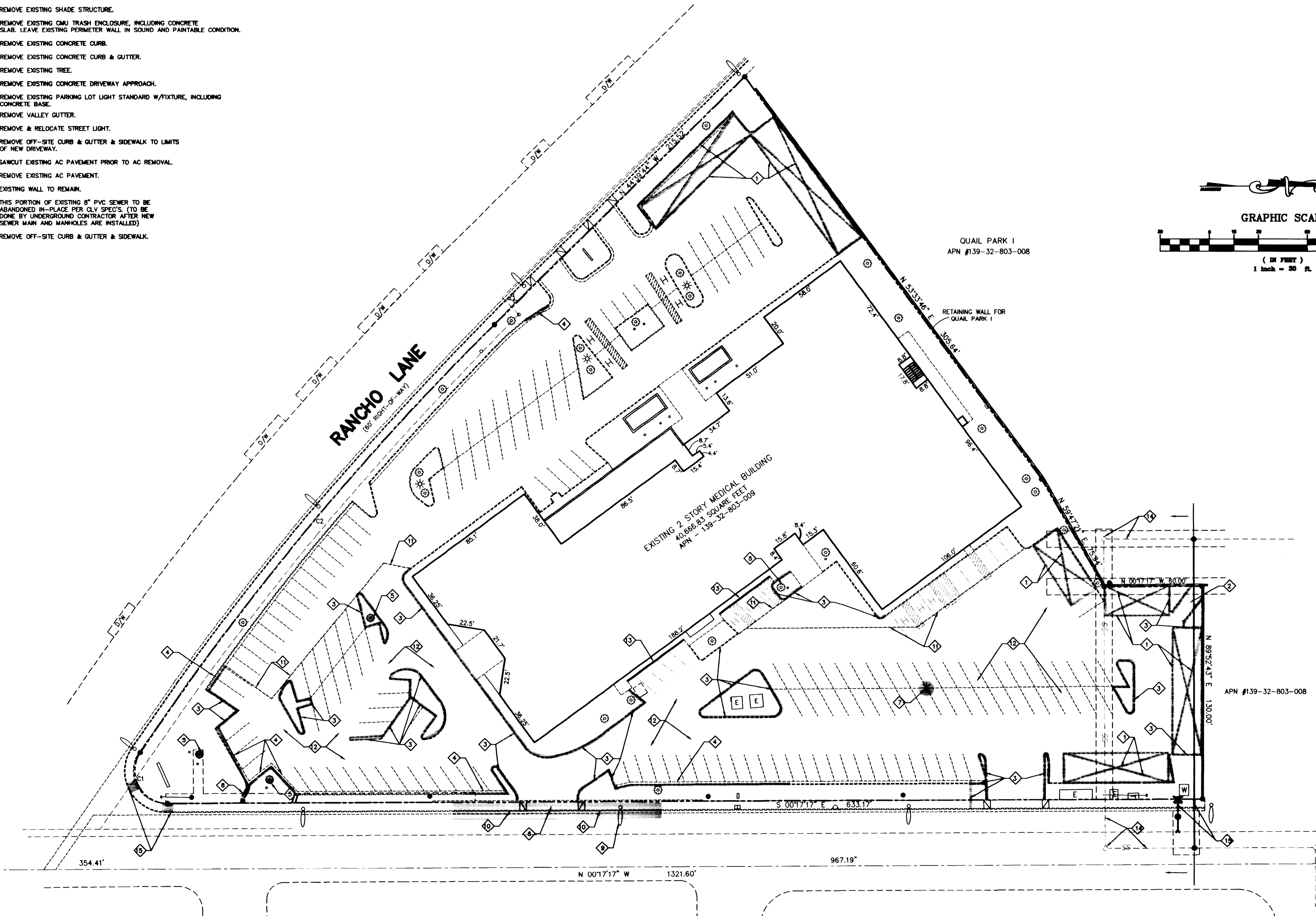
DEMOLITION NOTES:

- 1 REMOVE EXISTING SHADE STRUCTURE.
- 2 REMOVE EXISTING CMU TRASH ENCLOSURE, INCLUDING CONCRETE SLAB. LEAVE EXISTING PERIMETER WALL IN SOUND AND PAINTABLE CONDITION.
- 3 REMOVE EXISTING CONCRETE CURB.
- 4 REMOVE EXISTING CONCRETE CURB & GUTTER.
- 5 REMOVE EXISTING TREE.
- 6 REMOVE EXISTING CONCRETE DRIVEWAY APPROACH.
- 7 REMOVE EXISTING PARKING LOT LIGHT STANDARD W/FIXTURE, INCLUDING CONCRETE BASE.
- 8 REMOVE VALLEY GUTTER.
- 9 REMOVE & RELOCATE STREET LIGHT.
- 10 REMOVE OFF-SITE CURB & GUTTER & SIDEWALK TO LIMITS OF NEW DRIVEWAY.
- 11 SAWCUT EXISTING AC PAVEMENT PRIOR TO AC REMOVAL.
- 12 REMOVE EXISTING AC PAVEMENT.
- 13 EXISTING WALL TO REMAIN.
- 14 THIS PORTION OF EXISTING 8" PVC SEWER TO BE ABANDONED IN-PLACE PER CLV SPEC'S. (TO BE DONE BY UNDERGROUND CONTRACTOR AFTER NEW SEWER MAIN AND MANHOLES ARE INSTALLED)
- 15 REMOVE OFF-SITE CURB & GUTTER & SIDEWALK.



CHARLESTON BLVD.

PALOMINO LN.



TONOPAH DRIVE

Call before you Dig. It's a Law.
1-800-227-2600

AVOID HITTING OVERHEAD POWER LINES. IT'S COSTLY.

CALL BEFORE YOU DIG OVERHEAD.

CALL 1-702-593-6111

DEMOLITION PLAN				DELTA POINT			
901 S. RANCHO LANE				901 S. RANCHO LANE			
APN #139-32-803-008				APN #139-32-803-008			
DRAWN BY:	3/17/08	DESIGNED BY:	3/17/08	CHECKED BY:	3/17/08	PROJECT NO.:	LIBR0714
				SCALE: 1" = 30'			
SHEET 3 OF 6 SHEETS DRAWING NO. 107-V2966							
TOWER REALTY AND DEVELOPMENT, INC.				AGRA Infrastructure, Inc.			
1701 W. CHARLESTON BLVD., #600 LAS VEGAS, NEVADA 89102 (702)366-0444				ENGINEERING GLOBAL SOLUTIONS 2018 N. CHARLESTON BOULEVARD, SUITE 100 LAS VEGAS, NEVADA 89102 (702) 878-3817			

J:\1998\000\18014\DWG3 Non Aug 24 13:33:33 1998 PAK

