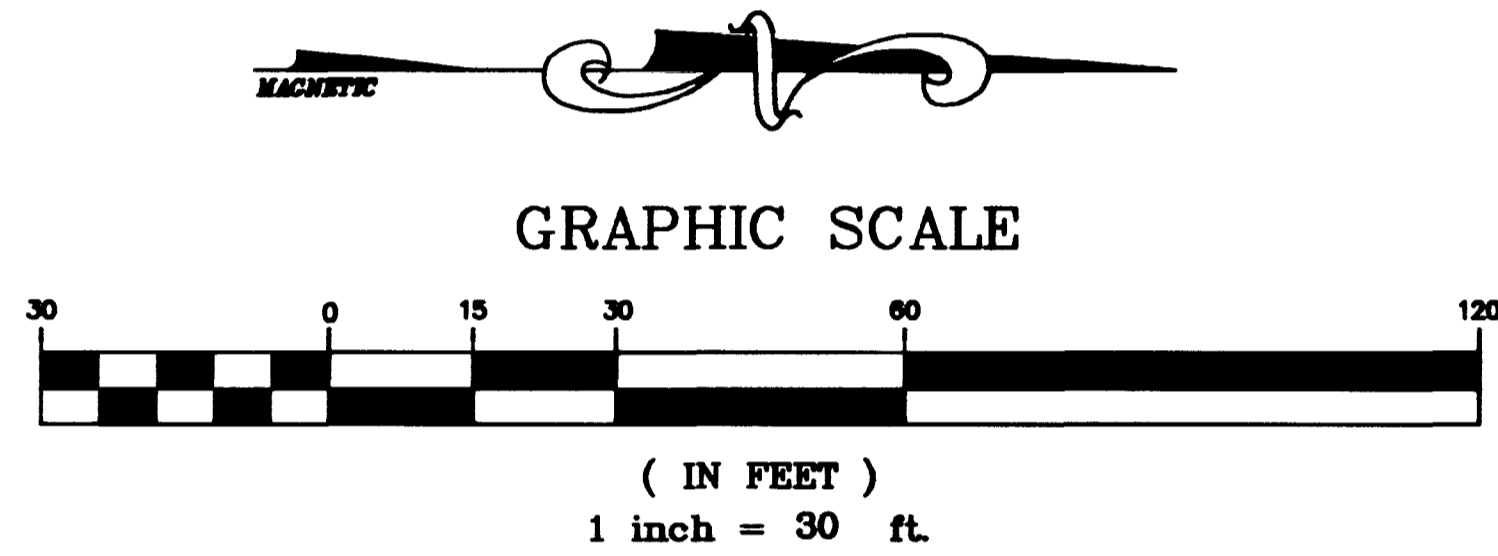


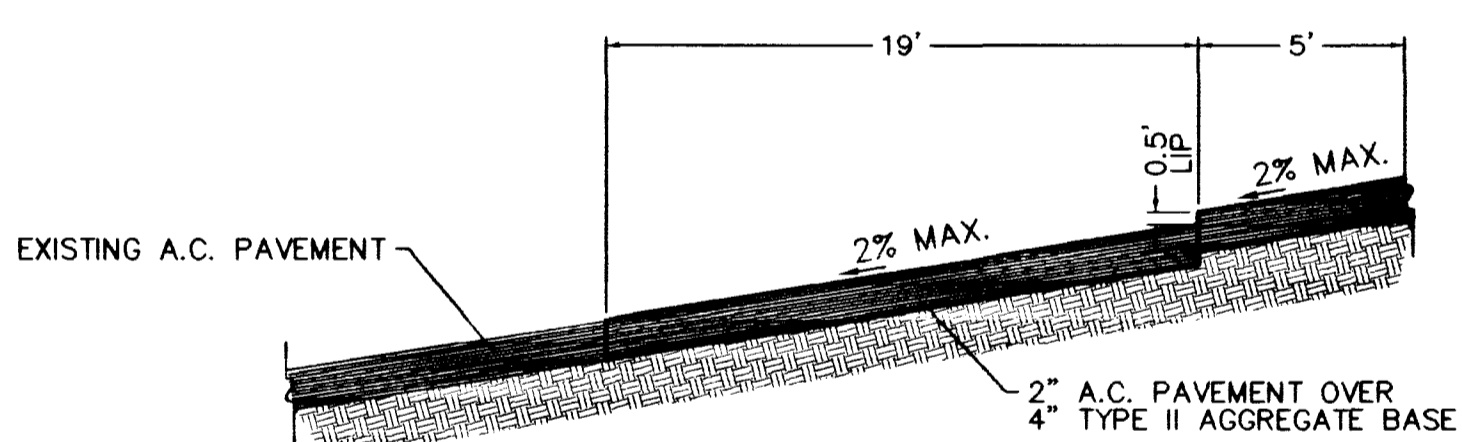
NOTE:
 1.) FOR DRAINAGE OF PARKING DECKS REFER TO ARCHITECTURAL DRAWING.
 2.) FOR ELEVATIONS OF PARKING DECKS REFER STRUCTURAL DRAWINGS.

THIRD LEVEL PARKING DECK DETAIL
 SCALE: 1"=30'

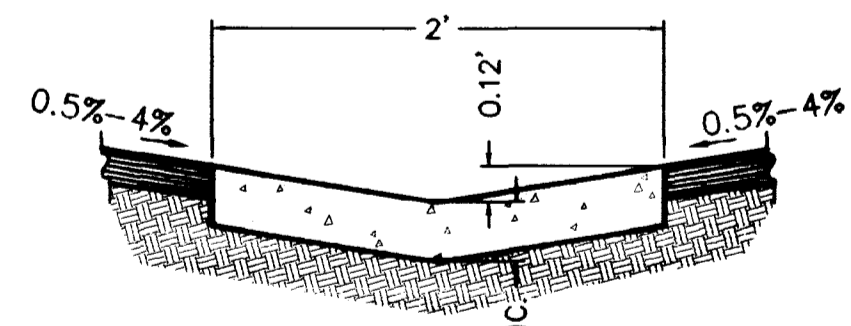


TONOPAH DRIVE
 (60' RIGHT-OF-WAY)

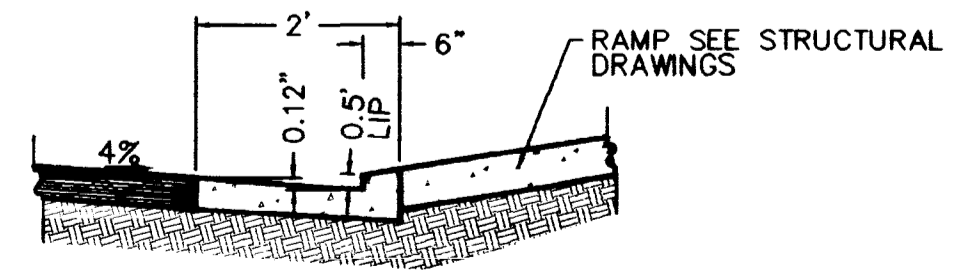
FIRE LINE RELOCATION
 SCALE: 1"=30'



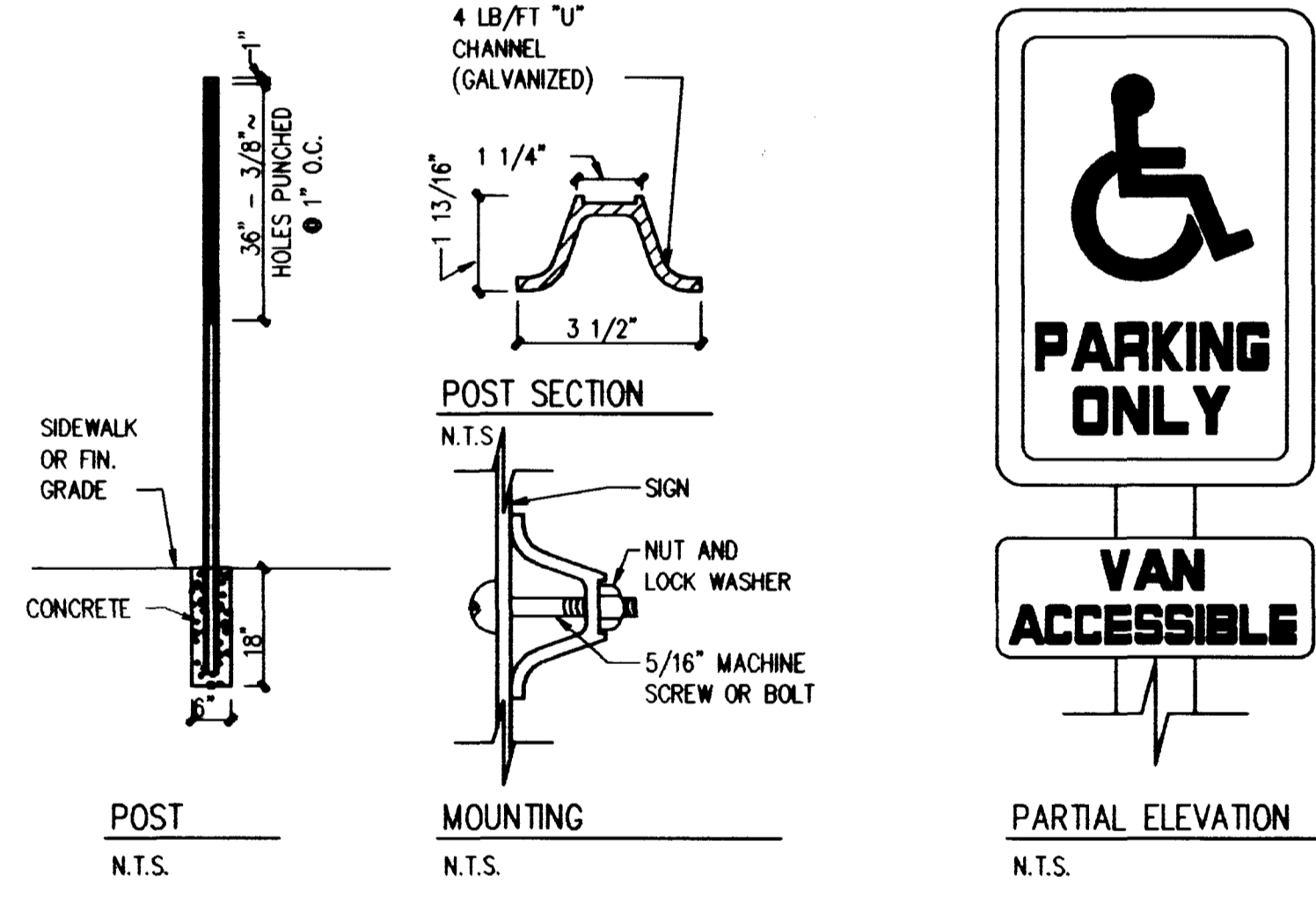
SECTION ADA SPACES 1
 N.T.S.



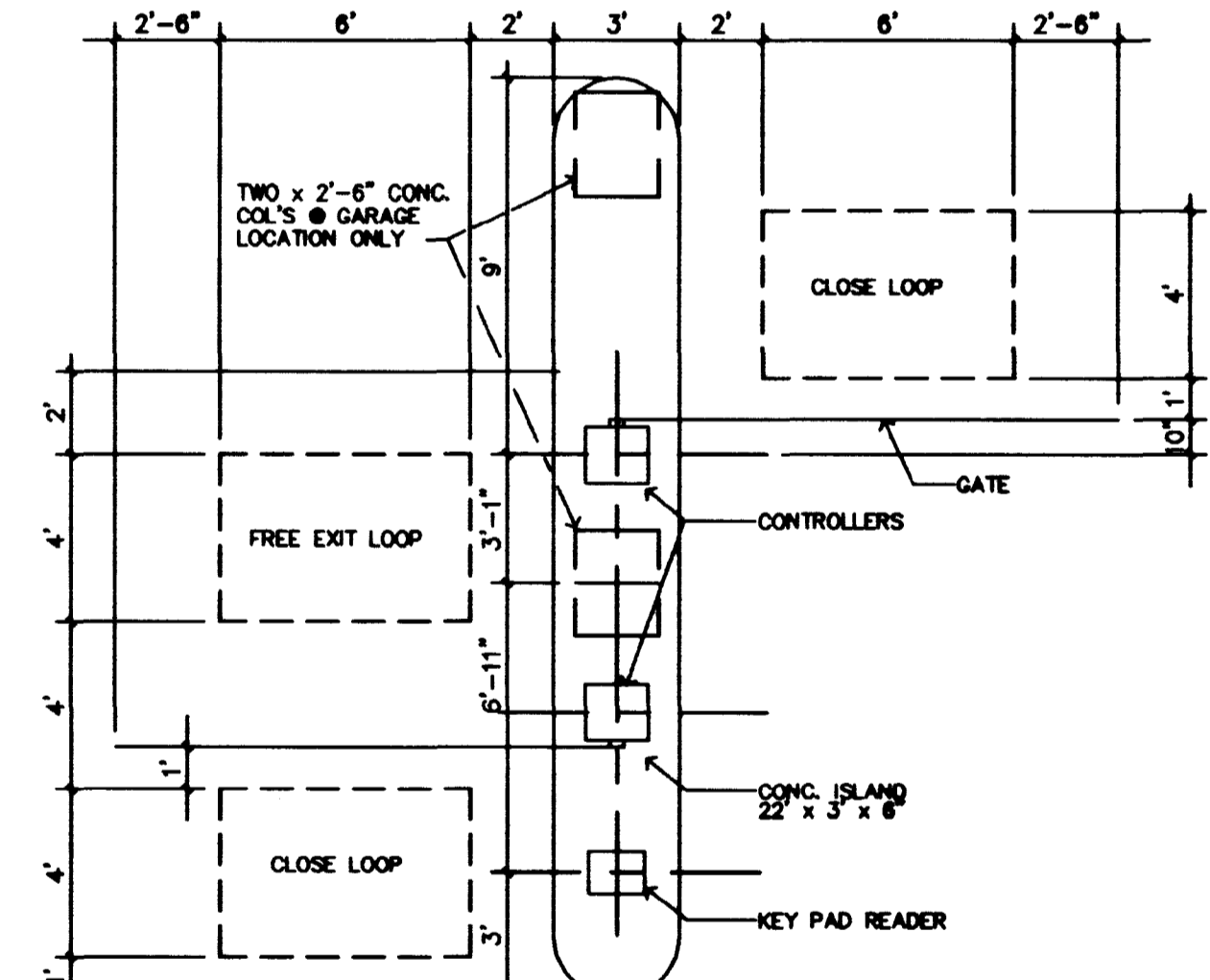
TYP. SECTION 3' V-GUTTER 2
 N.T.S.



SECTION RAMP TO A.C. PAVEMENT 3
 N.T.S.



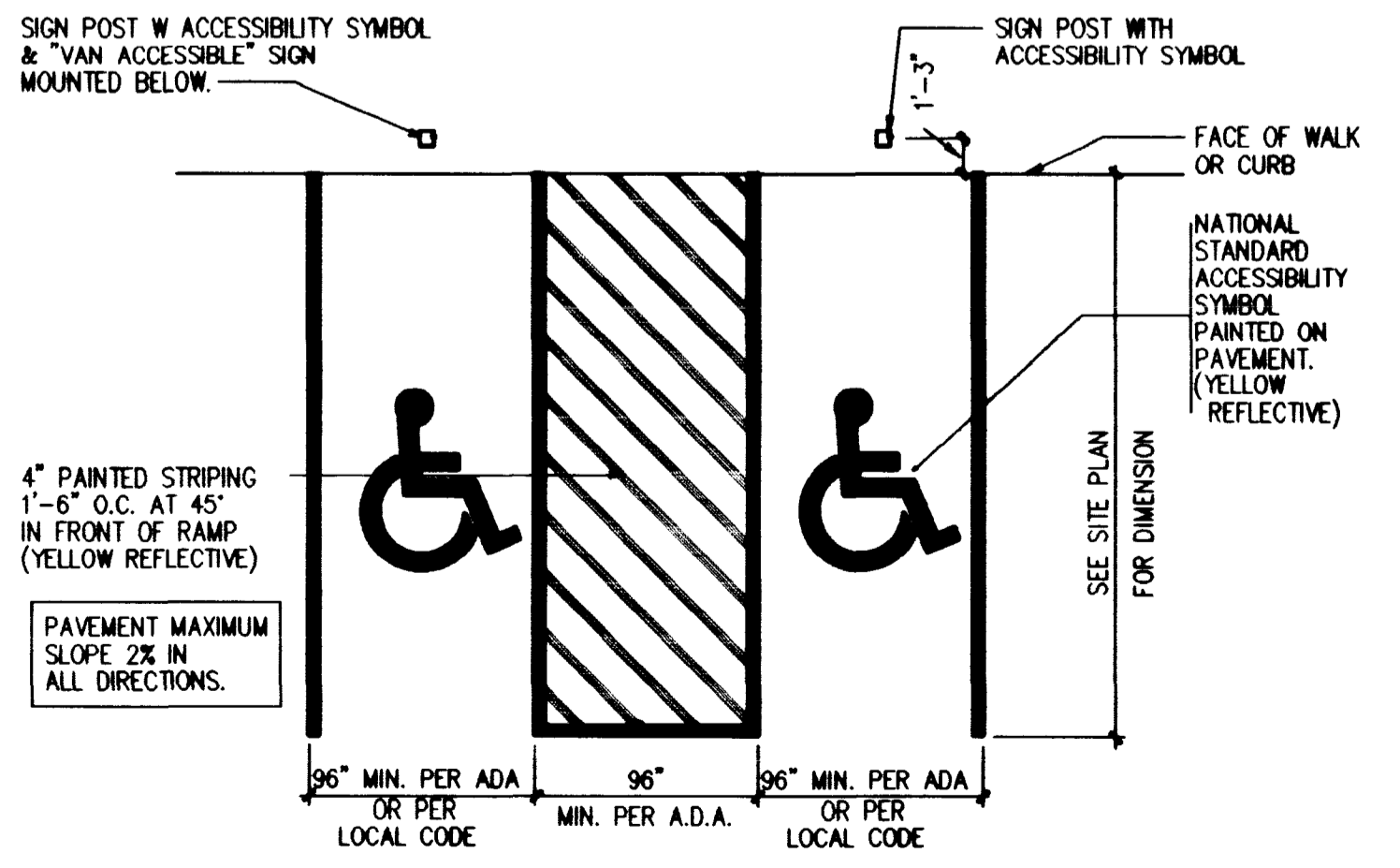
PARTIAL ELEVATION
 N.T.S.



GATE OPERATOR NOTES:

- ① ALL DETECTOR LOOPS SHALL HAVE 4 TURNS OF 14 GA. STRANDED WIRE, XLP OR EQUAL INSULATION
- ② POWER AND CONTROL WIRING MUST BE 18" MIN FROM LOOPS
- ③ LOCATE LOOP MIN 6" ANY REBAR THAT IS PARALLEL TO ANY SIDE OF LOOP
- ④ FOR ANY LOOP THAT CONTROLS THE GATE:
 - 1. MIN LOOP SIZE IS 4' x 8'
 - 2. MAX. LOOP SIZE IS 8' x 10'
 - 3. MAX. SPACING BETWEEN LOOPS IS 4'

① **ACCESS GATE (TYP. OF TWO)**
 SCALE: 1/4" = 1'-0"



DISABLED PARKING STALL
 N.T.S.

TOWER REALTY AND DEVELOPMENT, INC.
 1701 W. CHARLESTON BLVD., #600
 LAS VEGAS, NEVADA 89102
 (702)366-0444

AGRA Infrastructure, Inc.
 ENGINEERING GLOBAL SOLUTIONS
 3010 N. CHARLTON BOULEVARD, SUITE 100
 LAS VEGAS, NEVADA 89102
 PHONE: (702) 978-3077

DETAILS SHEET

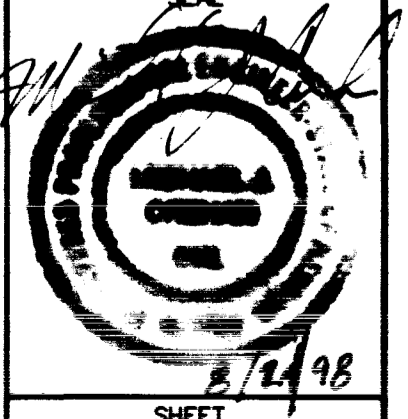
DELTA POINT
 901 S. RANCHO LANE
 CITY OF LAS VEGAS

SHEET

TITLE

DRAWN BY: PAK
 DESIGNED BY: MS
 CHECKED BY: MS
 PROJECT NO: LBLM1014

DATE: 3/17/08
 DATE: 3/17/08
 DATE: 3/17/08
 SCALE: 1" = 30'



6 OF 6 SHEETS
 DRAWING NO. 107-V2966

Call before you Dig. It's a Law.
 1-800-227-2600
 AVOID HITTING OVERHEAD POWER LINES. IT'S COSTLY.
 CALL BEFORE YOU DO OVERHEAD
 CALL 1-702-593-6111

J:\1998\000\98014\980140706 Mon Aug 24 13:35:58 1998 PAK 70723

