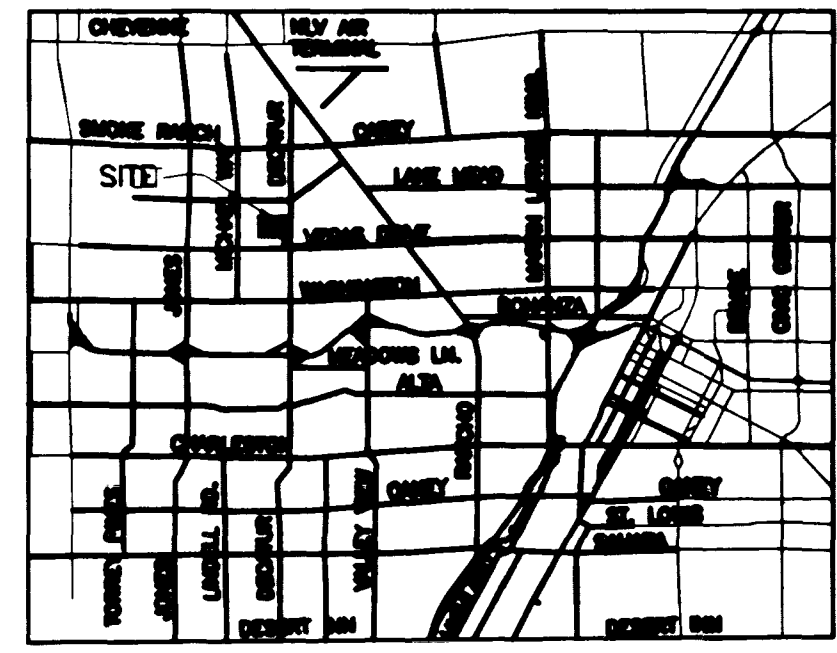


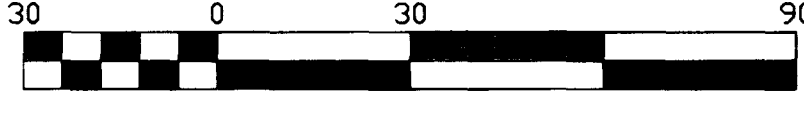
Call before you dig.  
1-800-227-2600

BASIS OF BEARINGS  
NORTH 02° 20' 55" EAST BEING THE CENTERLINE  
OF DECATUR BOULEVARD AS PER PARCELL MAP  
FILE 81, PAGE 14 OFFICIAL RECORDS, CLARK COUNTY,  
NEVADA

BENCHMARK  
CITY OF LAS VEGAS #21VDO 25NNE8  
RIVET AND PLATE IN TOP OF CURB SOUTH  
SIDE OF VEGAS DRIVE AND LEONARD LANE  
ELEV. 678.0617 METERS  
2224.61 FEET (NAVD 1988)



LOCATION  
06" SEWER DISCHARGES INTO 12" SEWER AT DECATUR BLVD  
& VEGAS DRIVE, SEE LOCATION MAP.



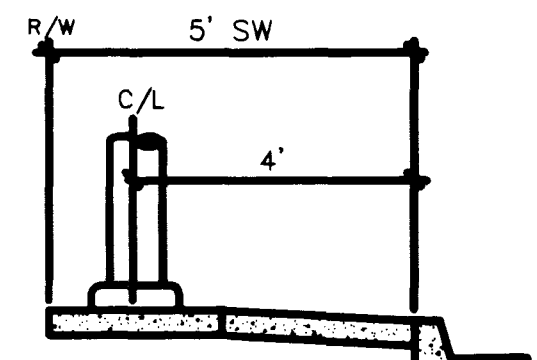
Scale 1" = 30'  
SEWER CONTRIBUTION

AVERAGE FLOW = 0.0043 MGD  
PEAK FLOW = 0.0129 MGD

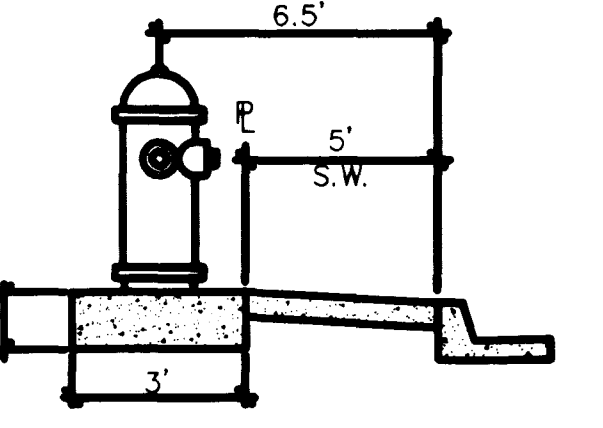
LAS VEGAS FIRE DEPARTMENT

FIRE FLOW IS: 1750 GPM AT 20 PSI RESIDUAL PRESSURE

BASED ON:	BLDG. 1	BLDG. 2
SQUARE FOOTAGE:	15,436 SF	14,750 SF
LARGEST AREA BETWEEN 4-HR AREA SEPARATION WALLS:	15,436 SF	14,750 SF
BUILDING HEIGHT:	UNDER 35 FT	UNDER 35 FT
NUMBER OF STORIES:	1FLOOR	1FLOOR
TYPE OF CONSTRUCTION:	V-N	V-N
OCCUPANCY:	X000X	X000X
FULL AUTOMATIC FIRE SYSTEM:	YES	YES



STREET LIGHT DETAIL

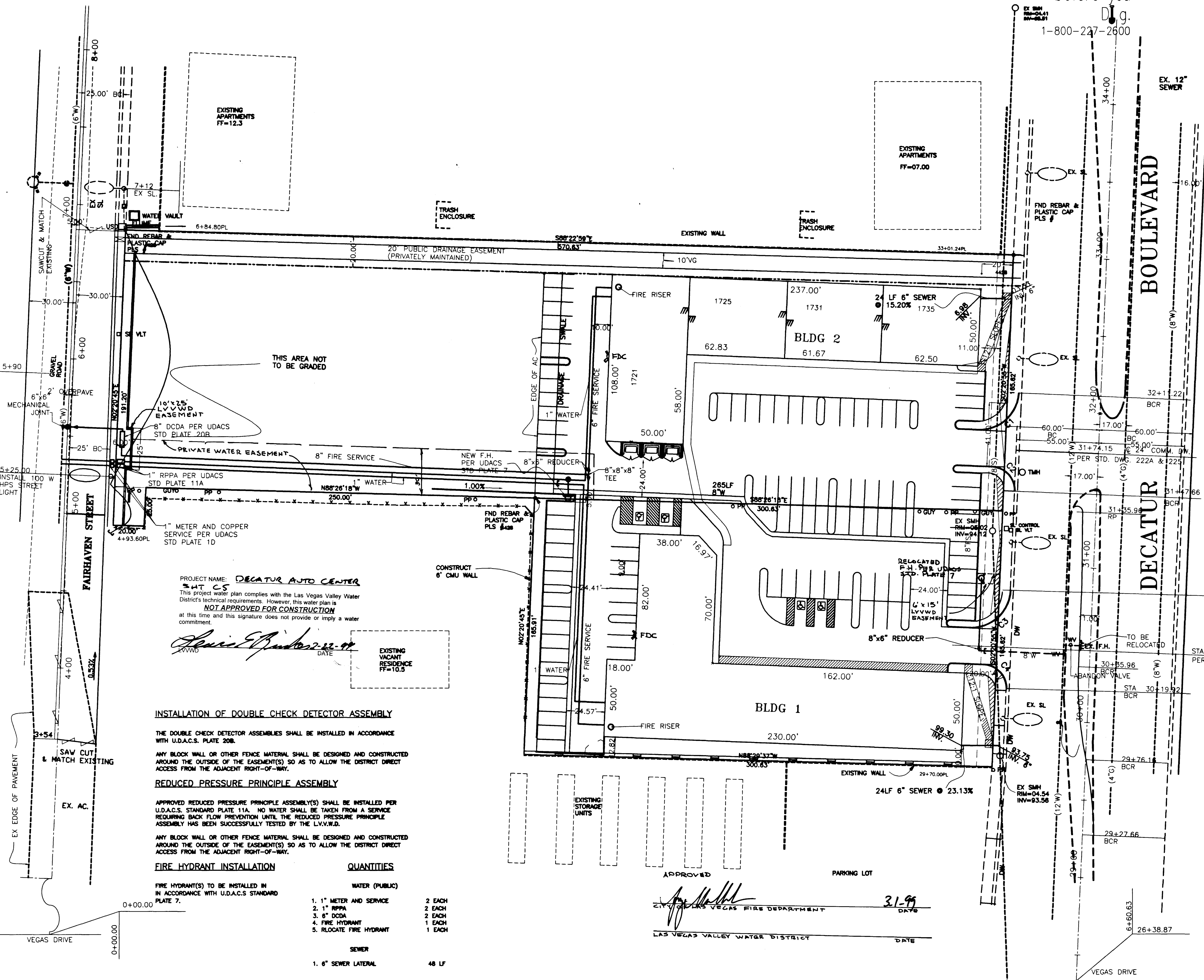


FIRE HYDRANT DETAIL

CONSTRUCTION NOTE:  
ALL EXISTING UTILITY STRUCTURES WITHIN CONSTRUCTION AREA SHALL BE ADJUSTED TO MATCH FINISH GRADE (I.E. WY. BOX, W.M.H. ANNODE BOX, FH, TEL. BOX, ETC.)

NOTE:  
ALL DIMENSIONS TO UTILITIES ARE TO CENTERLINE OF PIPE UNLESS INDICATED OTHERWISE

CONTRACTOR SHALL VERIFY HORIZONTAL AND VERTICAL ALIGNMENT OF EXISTING UTILITIES AND TO NOTIFY THE DESIGN ENGINEER IMMEDIATELY ON ANY DISCREPANCIES PRIOR TO CONSTRUCTION.



PROJECT NAME: **DECATUR AUTO CENTER**  
SHT C5  
This project water plan complies with the Las Vegas Valley Water District's technical requirements. However, this water plan is **NOT APPROVED FOR CONSTRUCTION** at this time and this signature does not provide or imply a water commitment.

*Janis P. Baker 2-22-99*  
DATE

**INSTALLATION OF DOUBLE CHECK DETECTOR ASSEMBLY**

THE DOUBLE CHECK DETECTOR ASSEMBLIES SHALL BE INSTALLED IN ACCORDANCE WITH U.D.A.C.S. PLATE 208.

ANY BLOCK WALL OR OTHER FENCE MATERIAL SHALL BE DESIGNED AND CONSTRUCTED AROUND THE OUTSIDE OF THE EASEMENT(S) SO AS TO ALLOW THE DISTRICT DIRECT ACCESS FROM THE ADJACENT RIGHT-OF-WAY.

**REDUCED PRESSURE PRINCIPLE ASSEMBLY**

APPROVED REDUCED PRESSURE PRINCIPLE ASSEMBLY(S) SHALL BE INSTALLED PER U.D.A.C.S. STANDARD PLATE 11A. NO WATER SHALL BE TAKEN FROM A SERVICE REQUIRING BACK FLOW PREVENTION UNTIL THE REDUCED PRESSURE PRINCIPLE ASSEMBLY HAS BEEN SUCCESSFULLY TESTED BY THE L.V.V.W.D.

ANY BLOCK WALL OR OTHER FENCE MATERIAL SHALL BE DESIGNED AND CONSTRUCTED AROUND THE OUTSIDE OF THE EASEMENT(S) SO AS TO ALLOW THE DISTRICT DIRECT ACCESS FROM THE ADJACENT RIGHT-OF-WAY.

**FIRE HYDRANT INSTALLATION**

FIRE HYDRANT(S) TO BE INSTALLED IN ACCORDANCE WITH U.D.A.C.S. STANDARD PLATE 7.

**QUANTITIES**

WATER (PUBLIC)		SEWER	
1. 1" METER AND SERVICE	2 EACH	1. 6" SEWER LATERAL	48 LF
2. 1" RPPA	2 EACH		
3. 6" DCDA	2 EACH		
4. FIRE HYDRANT	1 EACH		
5. RELOCATE FIRE HYDRANT	1 EACH		

APPROVED  
*[Signature]*  
LAS VEGAS FIRE DEPARTMENT  
DATE: 3-1-99

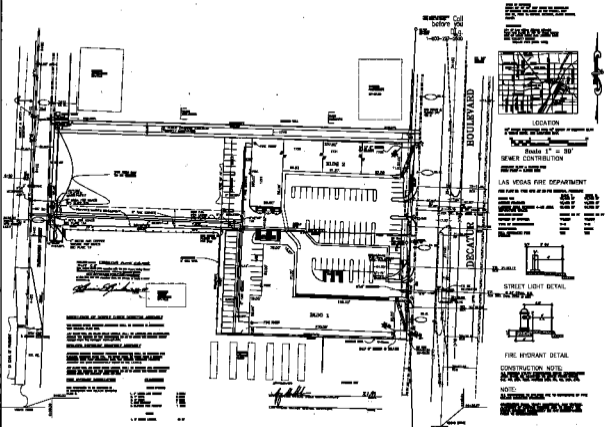
REVISION

NO. 1	DATE	BY

UTILITY PLAN  
TILE: DECATUR AUTO CENTER  
DECATUR BLVD.  
NORTH OF VEGAS DRIVE

DRAWN BY: D.S. BILLINGSLEY 11/FEB/99  
DESIGNED BY: C.H. BILLINGSLEY 20/JUL/98  
CHECKED BY: C.H. BILLINGSLEY 28/NOV/98  
PROJECT NO: 98004-C5  
SCALE: 1" = 30'

SHEET  
C5  
5 OF 9 SHEETS  
DRAWING NO.  
107-V2941



ALL UTILITIES SHOWN ON THIS PLAN ARE TO BE MAINTAINED AS SHOWN UNLESS OTHERWISE NOTED.  
 THE CONTRACTOR SHALL BE RESPONSIBLE FOR VERIFYING THE LOCATION AND DEPTH OF ALL UTILITIES PRIOR TO CONSTRUCTION.  
 ANY CHANGES TO THIS PLAN SHALL BE APPROVED BY THE CITY ENGINEER.



LOCATION



Scale 1" = 30'  
SEWER CONTRIBUTION

LAS VEGAS FIRE DEPARTMENT

THE PLAN IS THE PROPERTY OF THE ENGINEER, FREDERICK W. HARRIS, INC.

DATE	NOV 15 1967
BY	F. W. HARRIS
CHECKED	F. W. HARRIS
APPROVED	F. W. HARRIS
SCALE	1" = 30'
PROJECT	SEWER CONTRIBUTION
LOCATION	BOULEVARD & DECATUR
OWNER	SEWER CONTRIBUTION
DESIGNED BY	F. W. HARRIS
DRAWN BY	F. W. HARRIS
CHECKED BY	F. W. HARRIS
APPROVED BY	F. W. HARRIS
SCALE	1" = 30'
PROJECT	SEWER CONTRIBUTION
LOCATION	BOULEVARD & DECATUR
OWNER	SEWER CONTRIBUTION
DESIGNED BY	F. W. HARRIS
DRAWN BY	F. W. HARRIS
CHECKED BY	F. W. HARRIS
APPROVED BY	F. W. HARRIS



STREET LIGHT DETAIL



FIRE HYDRANT DETAIL

CONSTRUCTION NOTE:

ALL UTILITIES SHALL BE MAINTAINED AS SHOWN UNLESS OTHERWISE NOTED.  
 THE CONTRACTOR SHALL BE RESPONSIBLE FOR VERIFYING THE LOCATION AND DEPTH OF ALL UTILITIES PRIOR TO CONSTRUCTION.  
 ANY CHANGES TO THIS PLAN SHALL BE APPROVED BY THE CITY ENGINEER.

ALL UTILITIES SHOWN ON THIS PLAN ARE TO BE MAINTAINED AS SHOWN UNLESS OTHERWISE NOTED.  
 THE CONTRACTOR SHALL BE RESPONSIBLE FOR VERIFYING THE LOCATION AND DEPTH OF ALL UTILITIES PRIOR TO CONSTRUCTION.  
 ANY CHANGES TO THIS PLAN SHALL BE APPROVED BY THE CITY ENGINEER.

UTILITY PLAN  
 DECATUR CENTER  
 BOULEVARD & DECATUR  
 NORTH OF VEGAS DRIVE

DATE	NOV 15 1967
BY	F. W. HARRIS
CHECKED	F. W. HARRIS
APPROVED	F. W. HARRIS
SCALE	1" = 30'
PROJECT	SEWER CONTRIBUTION
LOCATION	BOULEVARD & DECATUR
OWNER	SEWER CONTRIBUTION
DESIGNED BY	F. W. HARRIS
DRAWN BY	F. W. HARRIS
CHECKED BY	F. W. HARRIS
APPROVED BY	F. W. HARRIS

100-10041