

WASHINGTON AVENUE

GRAPHIC SCALE

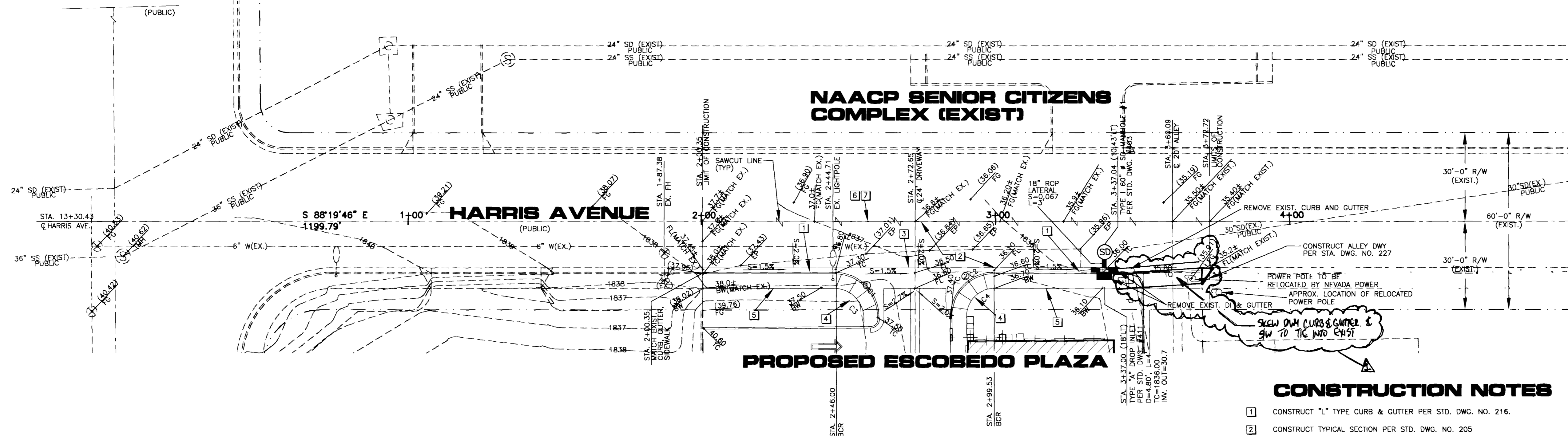


BASIS OF BEARINGS

SOUTH 01°17'00" WEST ALONG THE WESTERLY LINE OF THE SOUTHWEST QUARTER (SW 1/4) OF SECTION 25, TOWNSHIP 20 SOUTH, RANGE 61 EAST, M.D.M.

BENCHMARK

CITY OF LAS VEGAS BM#2LV01255WV6, RIVET AND PLATE IN TOP OF CURB, SE RETURN EASTERN AVE. AND HARRIS AVE. NAVD 88 DATUM
ELEVATION = 1840.795 FEET
ELEVATION = 561.0755 METERS



SIDEWALK RAMP DATA

NO.	A	B
1	8'	8'
2	8'	8'

CURVE TABLE

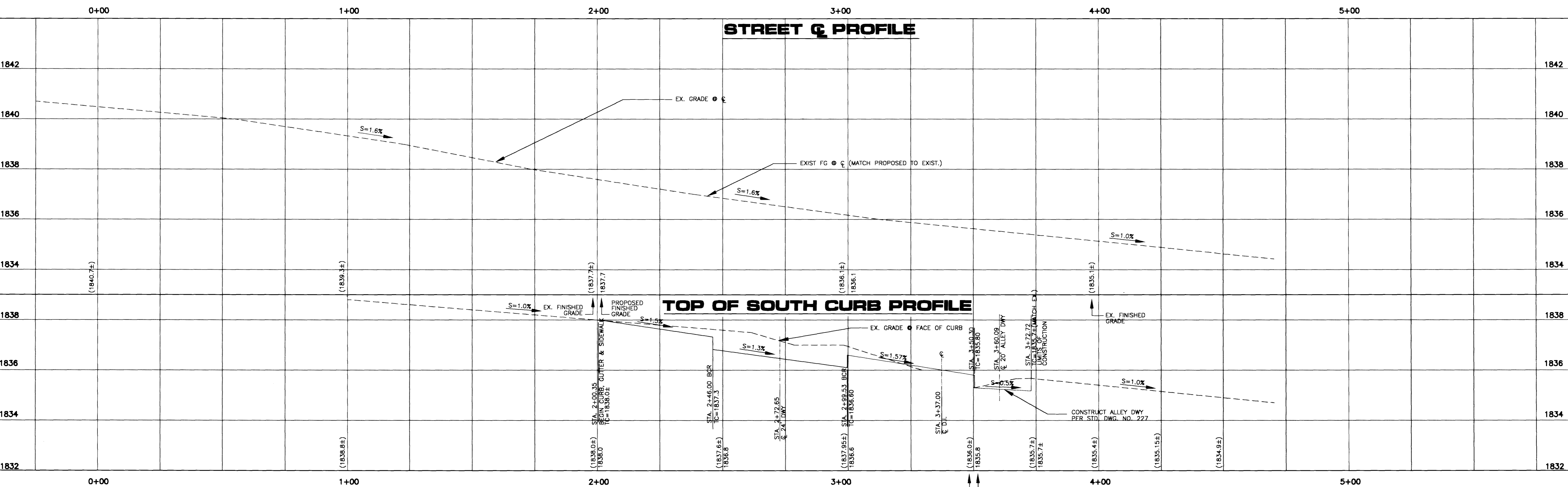
CURVE	LENGTH	DELTA	RADIUS	TANGENT
C1	22.58'	89°12'30"	14.50'	14.30'
C2	22.78'	90°00'00"	14.50'	14.50'
C3	18.17'	95°37'28"	10.89'	12.01'
C4	14.87'	89°39'46"	9.50'	9.44'

CONSTRUCTION NOTES

- 1 CONSTRUCT "L" TYPE CURB & GUTTER PER STD. DWG. NO. 216.
- 2 CONSTRUCT TYPICAL SECTION PER STD. DWG. NO. 205
- 3 CONSTRUCT 8" CROSS GUTTER PER STD. DWG. NO. 228.
- 4 CONSTRUCT SIDEWALK RAMP PER STD. DWG. NO. 235 CASE 1 (A=B=8).
- 5 CONSTRUCT 5" SIDEWALK PER STD. DWG. NO. 234.
- 6 LIMITS OF SAWCUT.
- 7 REMOVE EXISTING PAVEMENT.

Avoid cutting underground utility lines. It's costly.
Call before you Dig.
1-800-227-2600

GCG ASSUMES NO RESPONSIBILITY FOR UTILITY LOCATIONS. THE UTILITIES SHOWN ON THIS DRAWING HAVE BEEN PLOTTED FROM THE BEST AVAILABLE INFORMATION. IT IS, HOWEVER, THE CONTRACTOR'S RESPONSIBILITY TO FIELD VERIFY THE LOCATION OF ALL UTILITIES PRIOR TO THE COMMENCEMENT OF ANY CONSTRUCTION. CONTRACTOR TO FIELD VERIFY ALL EXISTING SITE CONDITIONS PRIOR TO CONSTRUCTION. IF A CONFLICT EXISTS BETWEEN WHAT IS SHOWN ON THESE DRAWINGS AND WHAT EXISTS IN THE FIELD, THE CONTRACTOR IS TO NOTIFY THE ARCHITECT OR ENGINEER IMMEDIATELY.



EDMUNDO & PANFLA ESCOBEDO
3008 HOLLY HILL DR.
LAS VEGAS, NEVADA 89104-4305

HARRIS AVE. PLAN & PROFILE STA. 0+00 TO 4+00 ESCOBEDO PLAZA

DRAWN BY: GCL
DESIGNED BY: GCL
CHECKED BY: MGC
PROJECT NO: 92-030201
SCALE: 1"=20' HOR 1"=2' VERT

SHEET 8 OF 11 SHEETS
DRAWING NO. 107-V2888
DATE: 11-12-98

11852 16597

