

**WASHINGTON AVENUE**  
(PUBLIC)

**HARRIS AVENUE**  
(PUBLIC)

**25TH STREET (EASTERN AVENUE)**

**ASTER LANE**  
(PUBLIC)

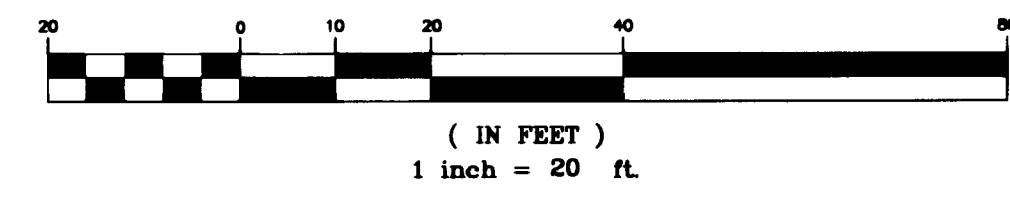
**TULIP LANE**  
(PUBLIC)

**Call before you Dig.**  
1-800-227-2600

**BASIS OF BEARINGS**  
SOUTH 01°17'00" WEST ALONG THE WESTERLY LINE OF THE SOUTHWEST QUARTER (SW 1/4) OF SECTION 25, TOWNSHIP 20 SOUTH, RANGE 61 EAST, M.D.M.

**BENCHMARK**  
CITY OF LAS VEGAS BM#2101255W6, RIVET AND PLATE IN TOP OF CURB, SE RETURN EASTERN AVE. AND HARRIS AVE.  
NAVD 88 DATUM  
ELEVATION = 1840.795 FEET  
ELEVATION = 561.0755 METERS

**GRAPHIC SCALE**



**CONSTRUCTION NOTES**

- CONSTRUCT "L" TYPE CURB & GUTTER PER STD. DWG. NO. 216.
- CONSTRUCT 36" "Y" GUTTER PER DETAIL "A" ON SHEET G-2.
- CONSTRUCT "B" CROSS GUTTER PER STD. DWG. NO. 228.
- CONSTRUCT SIDEWALK RAMP PER STD. DWG. NO. 235 CASE 1 (A=B=8).
- CONSTRUCT 5' SIDEWALK PER STD. DWG. NO. 234.
- LIMITS OF SAWCUT.
- REMOVE EXISTING PAVEMENT.
- CONSTRUCT TYPICAL SECTION PER STD. DWG. NO. 214 (SEE DETAIL "B" ON SHEET G-2).
- PAINT FACE OF CURB RED
- INSTALL "FIRE LANE" SIGN PER DETAIL "C" ON SHEET G-2.
- REMOVE CONFLICTING PORTIONS OF SIDEWALK, CURB & GUTTER.
- CONSTRUCT DEPRESSED ALLEY DRIVEWAY PER STD. DWG. NO. 227.
- CONSTRUCT TYPICAL SECTION PER STD. DWG. NO. 214 (SEE DETAIL "J" ON SHEET G-2).

**CURVE TABLE**

CURVE	LENGTH	DELTA	RADIUS	TANGENT
C1	22.58'	89°12'30"	14.50'	14.30'
C2	22.78'	90°00'00"	14.50'	14.50'
C3	22.89'	89°39'46"	14.50'	14.41'
C4	28.40'	66°25'19"	24.50'	16.04'
C5	15.46'	93°33'51"	9.50'	10.05'
C6	27.57'	90°00'00"	17.55'	17.55'
C7	18.17'	95°37'28"	10.89'	12.01'
C8	14.87'	89°39'46"	9.50'	9.44'

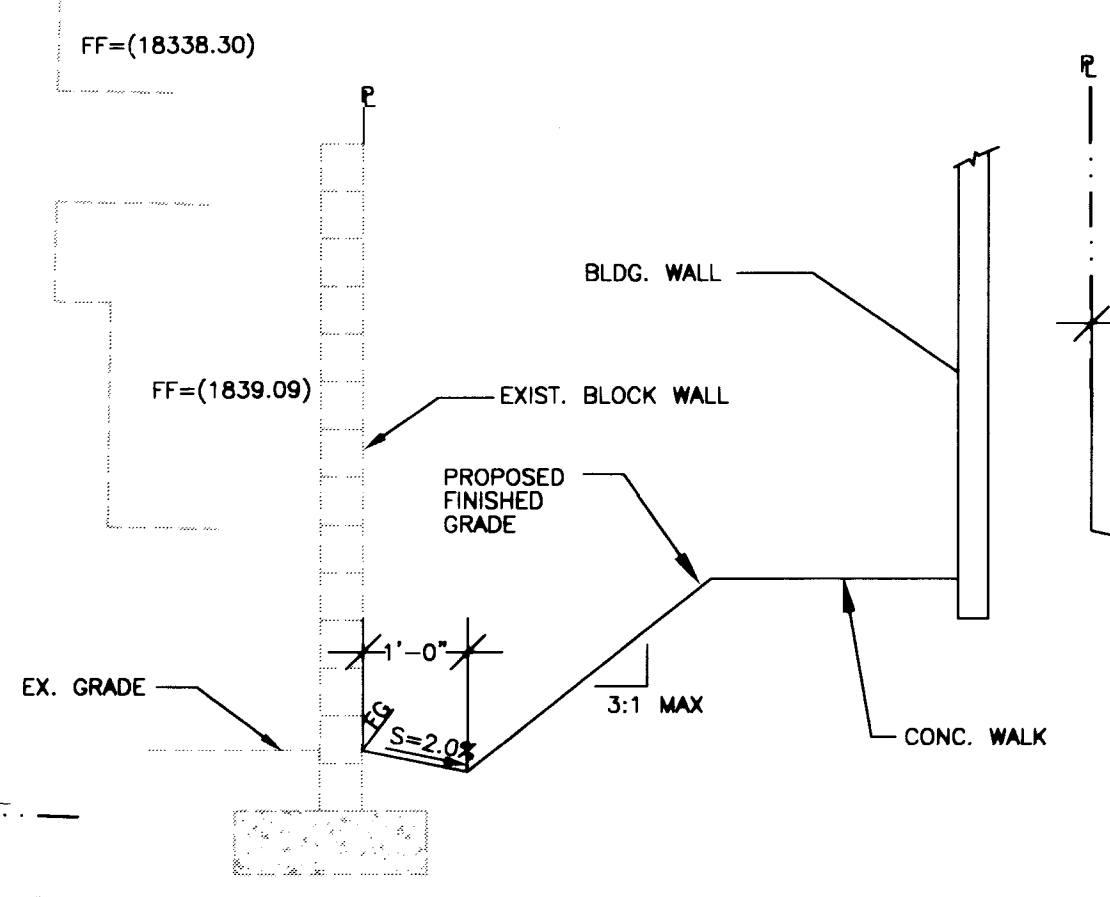
**S.V.R.E. LINE TABLE**

LINE	DIRECTION	DISTANCE
L1	S01°17'00"W	46.90'
L2	S04°38'04"E	57.98'
L3	S01°17'00"W	77.98'
L4	N03°28'30"E	91.96'
L5	S89°09'02"E	3.51'

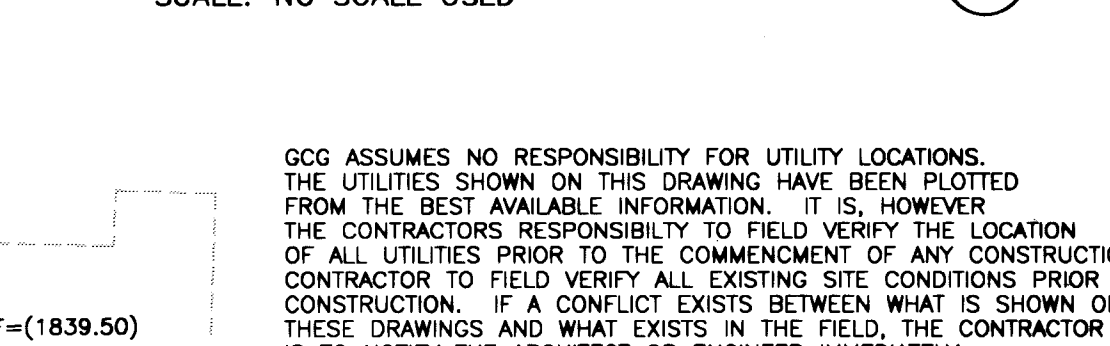
**S.V.R.E. CURVE TABLE**

CURVE	LENGTH	DELTA	RADIUS	TANGENT
C9	11.24'	167°00'35"	19.62'	11.62'
C10	16.21'	52°43'37"	17.61'	8.73'

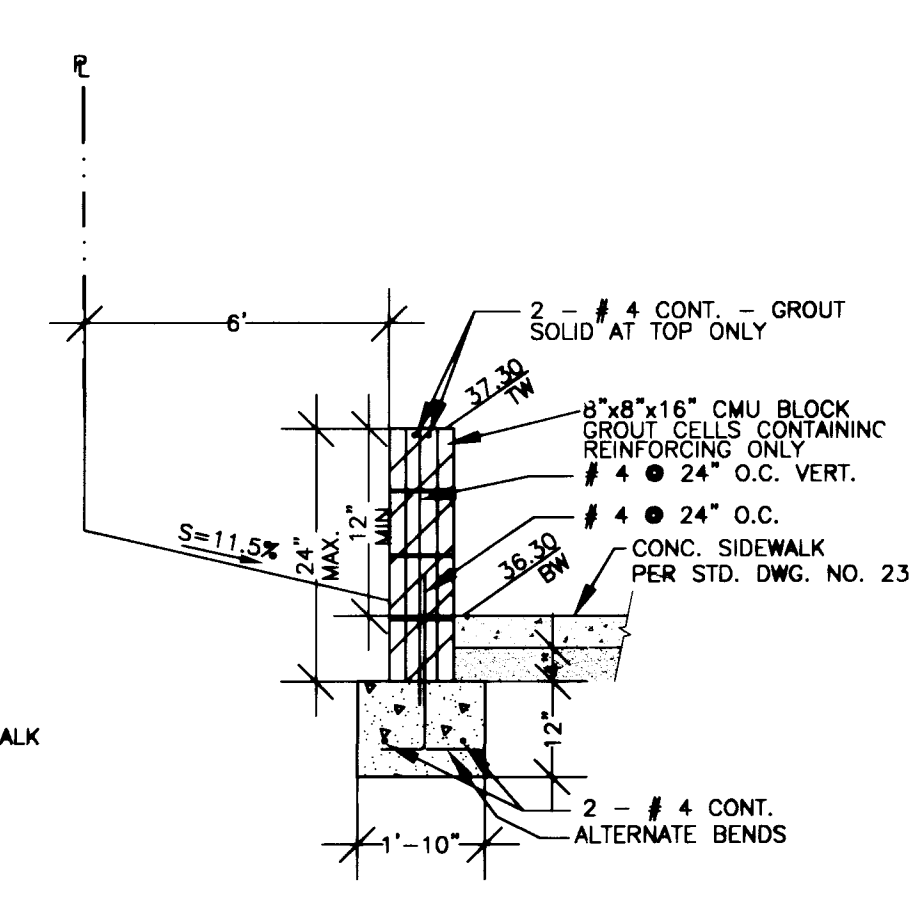
**BLOCK WALL DETAIL**  
SCALE: NO SCALE USED



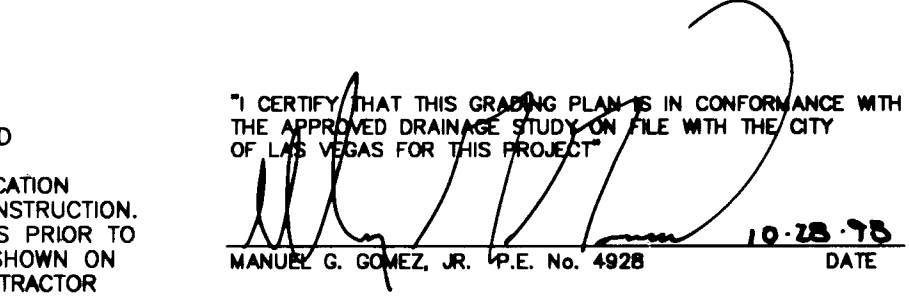
**BLOCK WALL DETAIL**  
SCALE: NO SCALE USED



**CMU BLOCK WALL**  
SCALE: NO SCALE USED



**CMU BLOCK WALL**  
SCALE: NO SCALE USED



GGG ASSUMES NO RESPONSIBILITY FOR UTILITY LOCATIONS. THE UTILITIES SHOWN ON THIS DRAWING HAVE BEEN PLOTTED FROM THE BEST AVAILABLE INFORMATION. IT IS, HOWEVER, THE CONTRACTOR'S RESPONSIBILITY TO FIELD VERIFY THE LOCATION OF ALL UTILITIES PRIOR TO THE COMMENCEMENT OF ANY CONSTRUCTION. CONTRACTOR TO FIELD VERIFY ALL EXISTING SITE CONDITIONS PRIOR TO CONSTRUCTION. IF A CONFLICT EXISTS BETWEEN WHAT IS SHOWN ON THESE DRAWINGS AND WHAT EXISTS IN THE FIELD, THE CONTRACTOR IS TO NOTIFY THE ARCHITECT OR ENGINEER IMMEDIATELY.

I CERTIFY THAT THIS GRADING PLAN IS IN CONFORMANCE WITH THE APPROVED DRAINAGE STUDY ON FILE WITH THE CITY OF LAS VEGAS FOR THIS PROJECT.  
MANUEL G. GOMEZ, JR. P.E. No. 4926 DATE 10-28-95

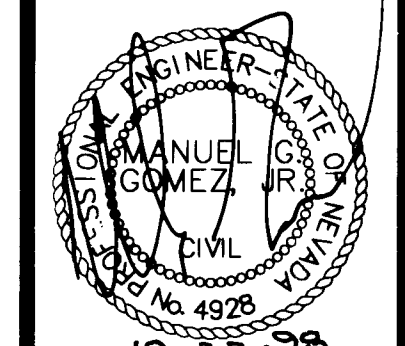
**EDMUNDO & PANFLA ESCOBEDO**  
3008 HOLLY HILL DR.  
LAS VEGAS, NEVADA 89104-4305

**GRADING PLAN**

**ESCOBEDO PLAZA**

SHEET 6 OF 11 SHEETS  
DRAWING NO. 107-V2888

**Gomez**  
CONSULTING GROUP, INC.  
HENNINGSON, NEVADA 89019-7204  
(702) 566-0440



DATE 10-28-95

