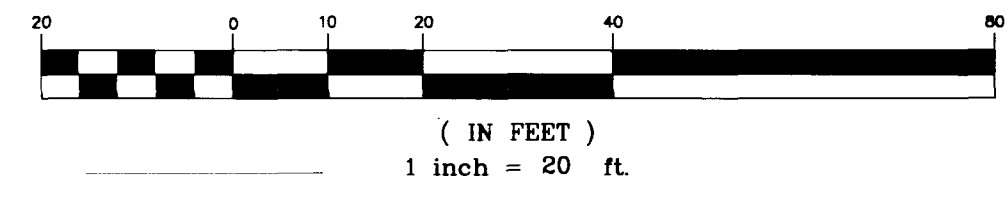


**WASHINGTON AVENUE**

**GRAPHIC SCALE**

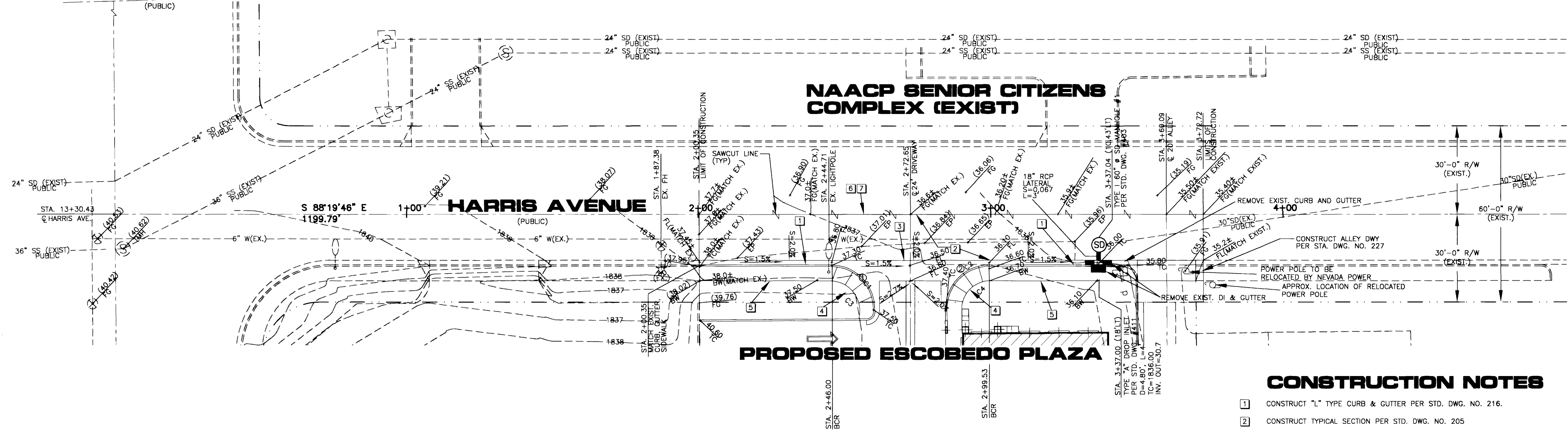


**BASIS OF BEARINGS**

SOUTH 01°17'00" WEST ALONG THE WESTERLY LINE OF THE SOUTHWEST QUARTER (SW 1/4) OF SECTION 25, TOWNSHIP 20 SOUTH, RANGE 61 EAST, M.D.M.

**BENCHMARK**

CITY OF LAS VEGAS BM#2LV01255W66, RIVET AND PLATE IN TOP OF CURB, SE RETURN EASTERN AVE. AND HARRIS AVE. NAVD 88 DATUM  
ELEVATION = 1840.795 FEET  
ELEVATION = 561.0755 METERS



**SIDEWALK RAMP DATA**

NO.	A	B
1	8'	8'
2	8'	8'

**CURVE TABLE**

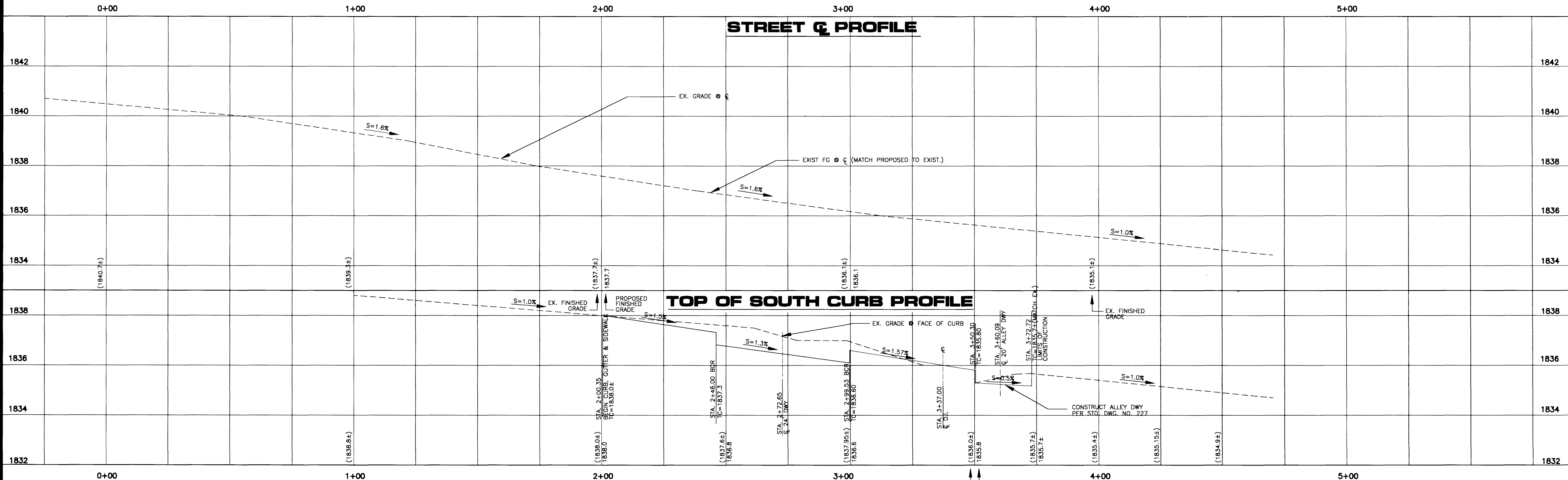
CURVE	LENGTH	DELTA	RADIUS	TANGENT
C1	22.58'	89°12'30"	14.50'	14.30'
C2	22.78'	90°00'00"	14.50'	14.50'
C3	18.17'	85°37'08"	10.89'	12.01'
C4	14.87'	89°39'46"	9.50'	9.44'

**CONSTRUCTION NOTES**

1. CONSTRUCT "L" TYPE CURB & GUTTER PER STD. DWG. NO. 216.
2. CONSTRUCT TYPICAL SECTION PER STD. DWG. NO. 205.
3. CONSTRUCT 8" CROSS GUTTER PER STD. DWG. NO. 228.
4. CONSTRUCT SIDEWALK RAMP PER STD. DWG. NO. 235 CASE 1 (A=B=8).
5. CONSTRUCT 5' SIDEWALK PER STD. DWG. NO. 234.
6. LIMITS OF SAWCUT.
7. REMOVE EXISTING PAVEMENT.

Avoid cutting underground utility lines. It's costly.  
**Call before you Dig.**  
1-800-227-2600

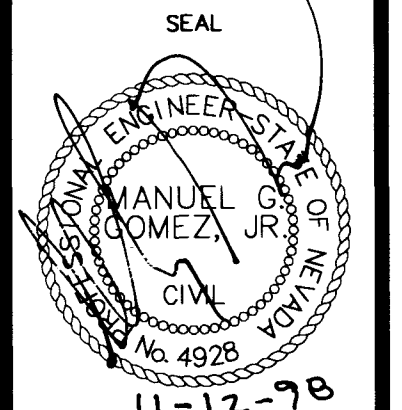
GCC ASSUMES NO RESPONSIBILITY FOR UTILITY LOCATIONS. THE UTILITIES SHOWN ON THIS DRAWING HAVE BEEN PLOTTED FROM THE BEST AVAILABLE INFORMATION. IT IS, HOWEVER, THE CONTRACTOR'S RESPONSIBILITY TO FIELD VERIFY THE LOCATION OF ALL UTILITIES PRIOR TO THE COMMENCEMENT OF ANY CONSTRUCTION. CONTRACTOR TO FIELD VERIFY ALL EXISTING SITE CONDITIONS PRIOR TO CONSTRUCTION. IF A CONFLICT EXISTS BETWEEN WHAT IS SHOWN ON THESE DRAWINGS AND WHAT EXISTS IN THE FIELD, THE CONTRACTOR IS TO NOTIFY THE ARCHITECT OR ENGINEER IMMEDIATELY.



**EDMUNDO & PANFLA ESCOBEDO**  
3008 HOLLY HILL DR  
LAS VEGAS, NEVADA 89104-4305

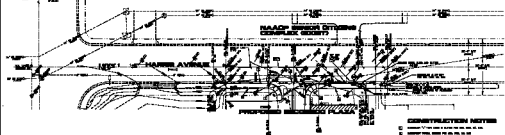
**HARRIS AVE.  
PLAN & PROFILE  
STA. 0+00 TO 4+00  
ESCOBEDO PLAZA**

SHEET  
DRAWN BY: CLN  
DESIGNED BY: CLN  
CHECKED BY: MGP  
PROJECT NO: 92-402001  
SCALE: HORIZ. 1"=20'  
VERT. 1"=2'  
11-12-98  
SHEET 8 OF 11 SHEETS  
DRAWING NO. 107-V-2888



REVISION

WASHINGTON AVENUE  
7222



BASE OF DRAWING  
DATE: 11/11/71  
BY: J. J. [unclear]  
CHECKED BY: [unclear]  
SCALE: 1" = 40'

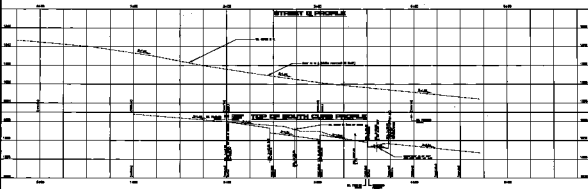
SIDEWALK RAMP DATA

1	2	3	4	5	6	7	8	9	10

CURVE TABLE

1	2	3	4	5	6	7	8	9	10

NOV 11 1971  
Before 10:00 AM  
City  
1-800-87-8000



DATE: 11/11/71  
BY: J. J. [unclear]  
CHECKED BY: [unclear]  
SCALE: 1" = 40'

WASHINGTON AVENUE  
HARRIS AVENUE  
STREET 4, PEOPLE  
PLAZA

1-800-87-8000