

941221

17-17-14

01161

ELKHORN SPRINGS - PARCEL 4A

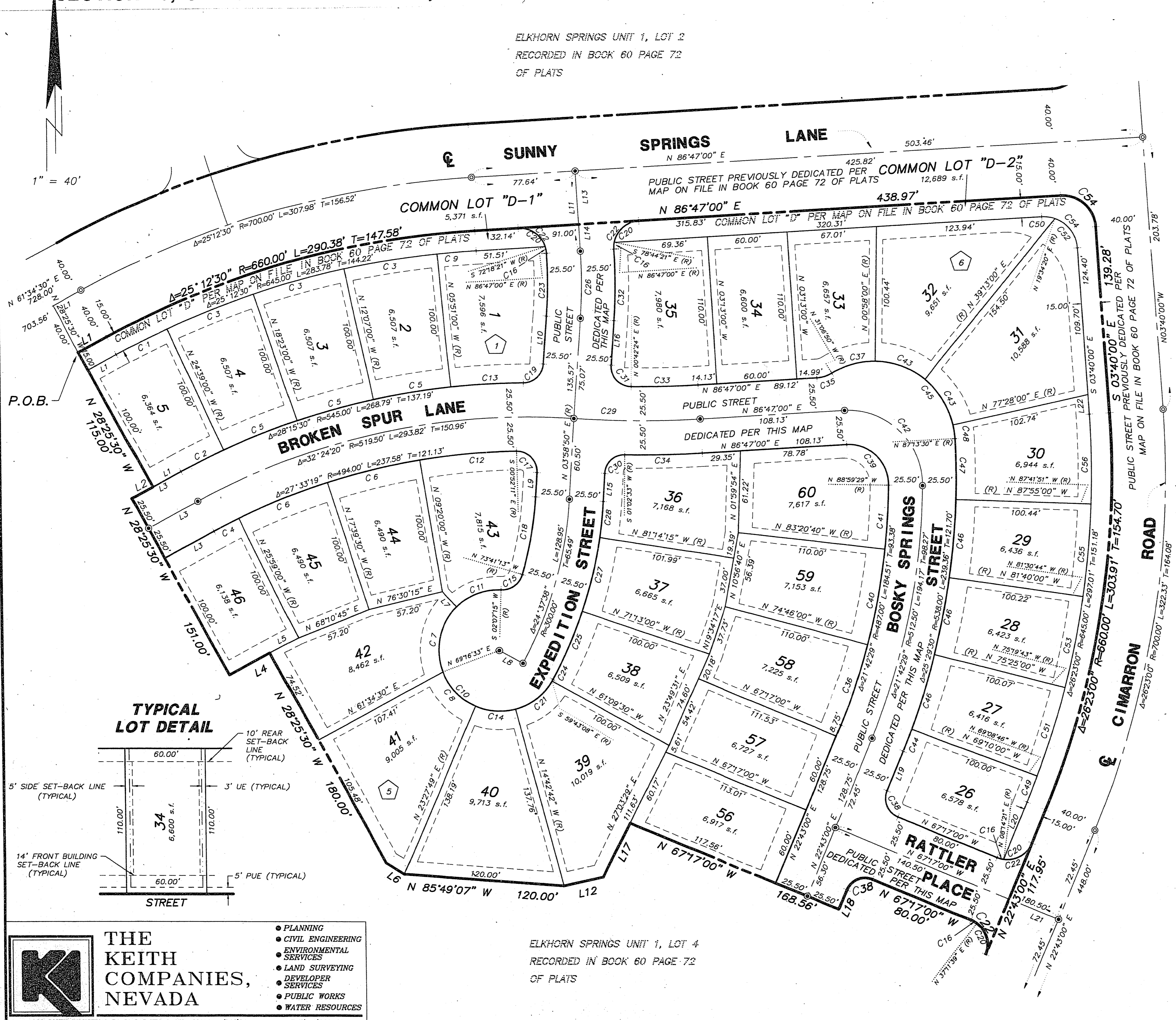
A SUBDIVISION OF A PORTION OF LOT 4 AND A PORTION OF COMMON LOT "D" AS SHOWN BY MAP THEREOF ON FILE IN BOOK 60 PAGE 72 OF PLATS, RECORDED IN THE CLARK COUNTY RECORDER'S OFFICE, LYING WITHIN SECTION 16, OF TOWNSHIP 19 SOUTH, RANGE 60 EAST, M.D.M., CITY OF LAS VEGAS, CLARK COUNTY, NEVADA.

ELKHORN SPRINGS UNIT 1, LOT 2
RECORDED IN BOOK 60 PAGE 72
OF PLATS

LEGEND

- STREET CENTERLINE
- BLOCK LINES
- LOT LINES
- BOUNDARY LINE
- SETBACK LINE
- LINE SEGMENT NUMBER
- CURVE SEGMENT NUMBER
- LOT NUMBER
- AREA OF LOT
- BLOCK NUMBERS
- SET MONUMENT - 5/8" REBAR AND ALUMINUM CAP STAMPED P.L.S. 8056 WITH BRASS CAP TIES IN TOP OF CURB (UNLESS OTHERWISE NOTED)
- FOUND MONUMENTS - ALUMINUM CAP STAMPED P.L.S. 8866 WITH BRASS CAP TIES IN TOP OF CURB (UNLESS OTHERWISE NOTED) PER FINAL MAP IN BOOK 60 PAGE 72 OF PLATS
- LOTS WILL BE MONUMENTED IN THE FRONT WITH A SCRIBE IN THE TOP OF CURB AT THE INTERSECTION OF THE SIDE LOT LINE AND IN THE REAR WITH A NAIL & TAG - PLS 8056 IN THE FACE OF WALL AT THE INTERSECTION OF THE SIDE LOT LINE.

TOTAL LOTS = 31
TOTAL COMMON LOTS = 2



CURVE	DELTA	RADIUS	LENGTH	TANGENT
1	03°46'30"	645.00'	42.50'	21.26'
2	03°46'30"	545.00'	35.91'	17.96'
3	06°16'00"	645.00'	70.55'	35.31'
4	02°29'30"	494.00'	21.05'	10.53'
5	06°16'00"	545.00'	59.63'	29.83'
6	08°19'30"	494.00'	71.78'	35.95'
7	66°56'21"	45.50'	53.16'	30.08'
8	45°48'44"	45.50'	36.38'	19.23'
9	02°38'00"	645.00'	29.64'	14.82'
10	24°33'47"	45.50'	193.38'	12.16'
11	45°54'21"	45.50'	36.45'	19.27'
12	08°27'49"	494.00'	72.97'	36.55'
13	05°41'00"	545.00'	54.06'	27.05'
14	38°10'31"	45.50'	30.32'	15.74'
15	75°30'47"	15.00'	21.75'	12.16'
16	14°28'39"	20.00'	5.05'	2.54'
17	94°51'01"	15.00'	24.83'	16.33'
18	12°19'57"	274.50'	59.08'	29.66'
19	85°51'10"	15.00'	22.48'	13.95'
20	75°31'01"	20.00'	26.38'	15.49'
21	45°00'27"	45.50'	35.74'	18.85'
22	90°00'00"	20.00'	31.42'	20.00'
23	07°11'50"	374.50'	47.04'	23.55'
24	01°40'24"	45.50'	1.33'	0.66'
25	09°49'28"	325.50'	55.81'	27.98'
26	07°11'50"	400.00'	50.25'	25.16'
27	10°01'15"	325.50'	56.93'	28.54'
28	04°46'55"	325.50'	27.17'	13.59'
29	07°11'50"	749.86'	94.17'	47.15'
30	87°03'43"	20.00'	22.79'	14.25'
31	93°16'26"	15.00'	24.42'	15.88'
32	07°11'50"	425.50'	53.45'	26.76'
33	03°55'24"	724.16'	49.59'	24.80'
34	04°51'33"	725.16'	57.62'	28.82'
35	25°53'50"	25.00'	12.17'	6.21'
36	07°29'00"	487.00'	63.61'	31.85'
37	32°04'50"	61.00'	34.15'	17.54'
38	90°00'00"	75.00'	23.56'	15.00'
39	94°13'31"	30.00'	49.34'	32.30'
40	08°34'40"	487.00'	72.91'	36.52'
41	05°38'49"	487.00'	48.00'	24.02'
42	94°13'31"	55.50'	91.27'	59.75'
43	38°15'00"	61.90'	40.72'	21.15'
44	01°40'24"	538.00'	17.68'	8.84'
45	118°20'20"	61.00'	125.99'	102.20'
46	06°15'00"	538.00'	58.69'	29.37'
47	04°51'30"	538.00'	45.62'	22.82'
48	09°45'30"	61.00'	10.39'	5.21'
49	06°11'46"	645.00'	20.97'	10.49'
50	22°47'20"	25.00'	9.94'	5.04'
51	06°10'57"	645.00'	69.60'	34.83'
52	66°45'40"	25.00'	29.13'	16.47'
53	06°11'01"	645.00'	69.61'	34.84'
54	89°33'00"	25.00'	35.07'	24.80'
55	06°11'07"	645.00'	69.63'	34.85'
56	05°58'09"	645.00'	67.20'	33.63'

LINE	BEARING	DISTANCE
L1	N 61°34'30" E	24.44'
L2	N 61°34'30" E	18.00'
L3	N 61°34'30" E	42.44'
L4	S 61°34'30" W	35.00'
L5	N 62°25'16" E	24.23'
L6	N 58°04'40" W	16.11'
L7	N 43°47'06" W (R)	15.63'
L8	N 61°23'52" W (R)	20.00'
L9	N 03°16'50" E	18.29'
L10	N 03°58'50" E	36.03'
L11	N 03°13'00" W	60.00'
L12	S 77°18'08" W	30.31'
L13	N 03°13'00" W	40.00'
L14	N 03°13'00" W	20.00'
L15	N 03°58'50" E	21.04'
L16	N 03°58'50" E	33.41'
L17	S 27°03'29" W	45.85'
L18	S 22°43'00" W	15.80'
L19	N 22°43'00" E	31.95'
L20	N 22°43'00" E	48.32'
L21	S 67°17'00" E	40.00'
L22	N 03°40'00" W	14.71'

NOTE: DIRECT VEHICULAR ACCESS TO SUNNY SPRINGS LANE AND CIMARRON ROAD THROUGH COMMON AREA FROM ADJACENT LOTS IS PROHIBITED.

THE KEITH COMPANIES, NEVADA

- PLANNING
- CIVIL ENGINEERING
- ENVIRONMENTAL SERVICES
- LAND SURVEYING
- DEVELOPER SERVICES
- PUBLIC WORKS
- WATER RESOURCES

4052 SOUTH INDUSTRIAL ROAD, LAS VEGAS, NV 89103 (702)793-0350 FAX(702)793-8282

ELKHORN SPRINGS UNIT 1, LOT 4
RECORDED IN BOOK 60 PAGE 72
OF PLATS

ELKHORN SPRINGS 4A
SHEET 3 OF 3
FM 40-84

BOOK 605 PAGE 55
4299-4A