

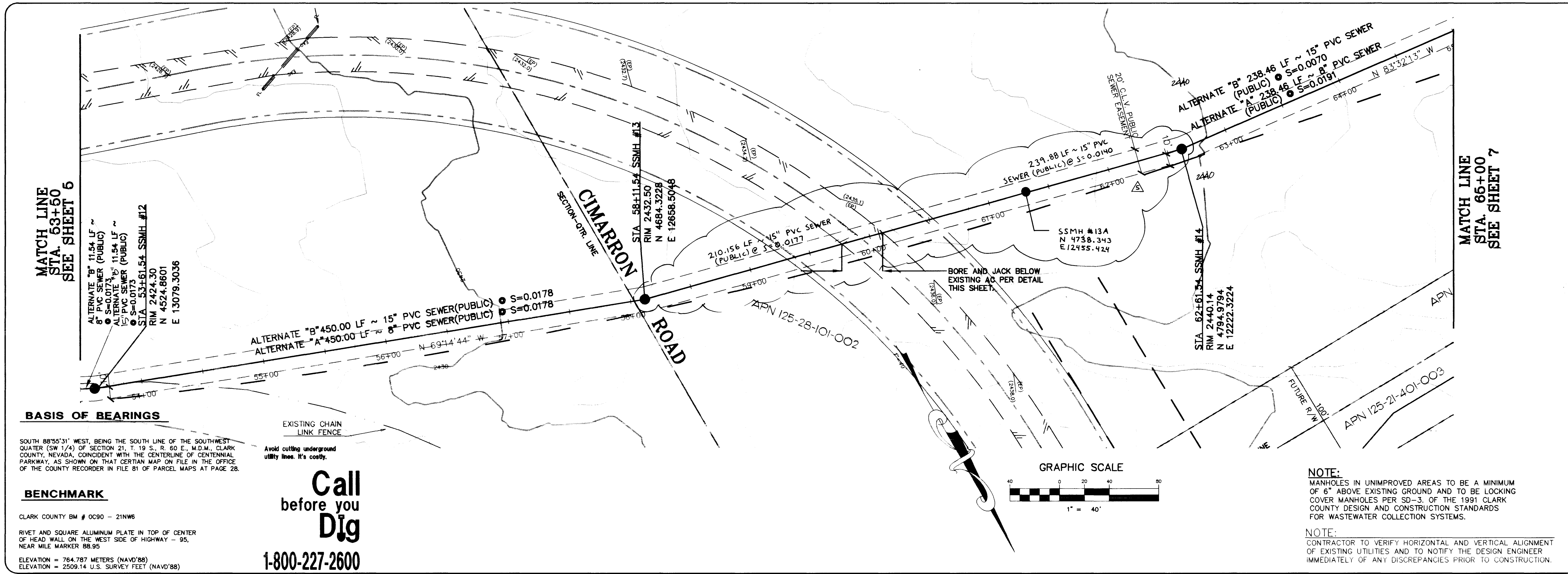
REV	DATE	BY	REVISION
1	2/17/97	IKJ	REV PER CLV COMMENTS
2	1/28/97	IKJ	INCREASE SEWER SIZE TO 15" ALTB
3	1/28/97	IKJ	REV SEWER ALIGNMENT
4	1/20/97	ROM	REV SEWER ALIGNMENT
5	8/5/98	CH	REVISE SEWER ALIGNMENT ALONG FRONTAGE ROAD

ISSUED: NUMBER: SD-22

AMERICAN WEST HOMES, INC.
CITY OF LAS VEGAS

CONSULTING ENGINEERS • PLANNERS • LAND SURVEYORS
2727 SOUTH RAINBOW BOULEVARD
LAS VEGAS, NEVADA 89102-5148 PHONE (702) 873-7550 FAX (702) 362-2597

vtm nevada



OFF-SITE SANITARY SEWER
PLAN & PROFILE
STA. 53+50 TO STA. 65+00
DEER SPRINGS RANCH
PHASE II OFF-SITE SEWER

PROJECT

DATE: 1/27/97

SCALE: HORIZ. 1"=40'
VERT. 1"=4'

WO NO. 4884

BY: IKJ/RDM

DATE: 1/27/97

SCALE: HORIZ. 1"=40'
VERT. 1"=4'

SHEET: 6 OF 8 SHEETS

NOTE:
MANHOLES IN UNIMPROVED AREAS TO BE A MINIMUM OF 6" ABOVE EXISTING GROUND AND TO BE LOCKING COVER MANHOLES PER SD-3. OF THE 1991 CLARK COUNTY DESIGN AND CONSTRUCTION STANDARDS FOR WASTEWATER COLLECTION SYSTEMS.

NOTE:
CONTRACTOR TO VERIFY HORIZONTAL AND VERTICAL ALIGNMENT OF EXISTING UTILITIES AND TO NOTIFY THE DESIGN ENGINEER IMMEDIATELY OF ANY DISCREPANCIES PRIOR TO CONSTRUCTION.

Call before you Dig
1-800-227-2600

307Y-4478-OS-2

