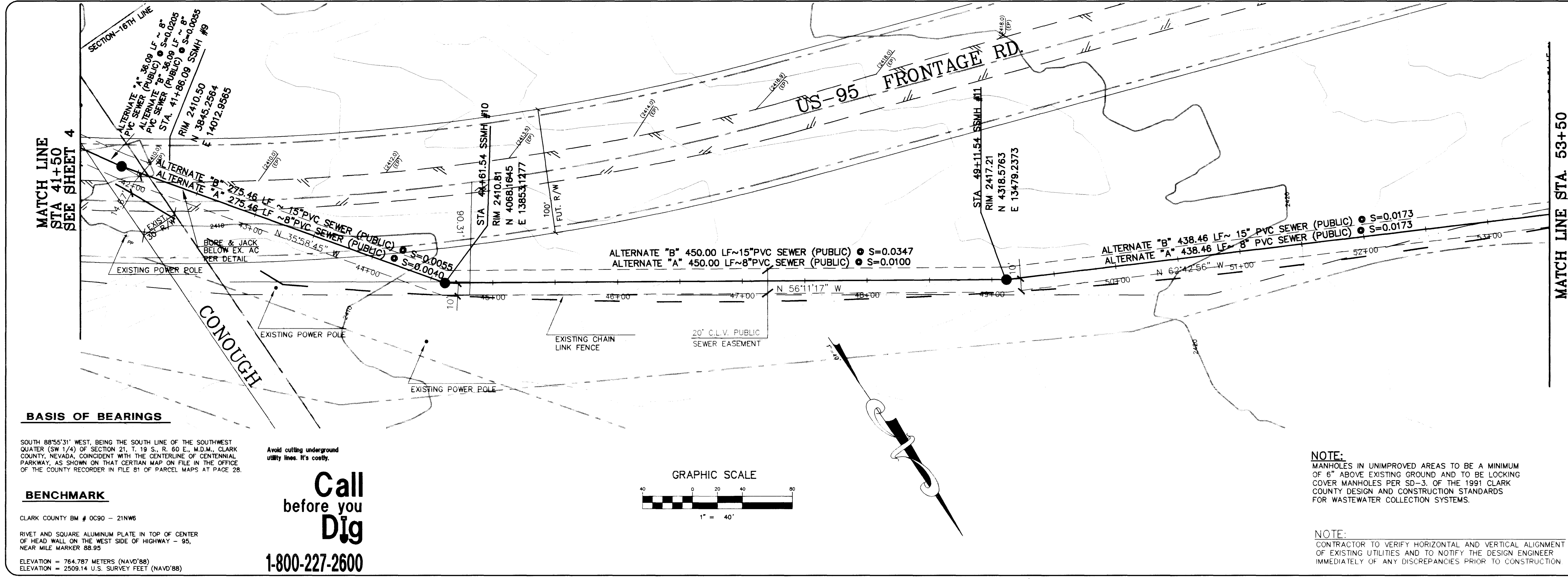


AMERICAN WEST HOMES, INC.
CITY OF LAS VEGAS

CONSULTING ENGINEERS • PLANNERS • LAND SURVEYORS
2727 SOUTH RAINBOW BOULEVARD
LAS VEGAS, NEVADA 89102-5148 PHONE (702) 873-7550 FAX (702) 362-2597

vtm nevada

REV	DATE	BY	CHK	APP	REV PER CLV COMMENTS
1	2/11/97	ROM			INCREASE SEWER SIZE TO 15" ALT. B
2	1/28/97	IKJ			REV SEWER ALIGNMENT
3	1/20/97	ROM			REVISE SEWER ALIGNMENT ALONG FRONTAGE ROAD
4	8/5/98	SKH			REVISION



OFF-SITE SANITARY SEWER
PLAN & PROFILE
STA. 41+50 TO STA. 53+50
DEER SPRINGS RANCH
PHASE II OFF-SITE SEWER

PROJECT

SEAL
Professional Engineer
J. J. [Signature]
1/27/97

NO. 4884
BY: IKJ/RDM
DATE: 1/27/97
SCALE: HORIZ. 1"=40'
VERT. 1"=4'

5 OF 8 SHEETS

BASIS OF BEARINGS

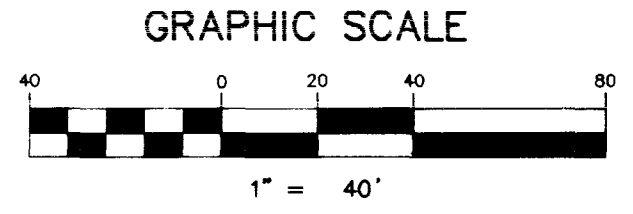
SOUTH 88°55'31" WEST, BEING THE SOUTH LINE OF THE SOUTHWEST QUARTER (SW 1/4) OF SECTION 21, T. 19 S., R. 80 E., M.D.M., CLARK COUNTY, NEVADA, COINCIDENT WITH THE CENTERLINE OF CENTENNIAL PARKWAY, AS SHOWN ON THAT CERTAIN MAP ON FILE IN THE OFFICE OF THE COUNTY RECORDER IN FILE B1 OF PARCEL MAPS AT PAGE 28.

BENCHMARK

CLARK COUNTY BM # 0C90 - 21NWS
RIVET AND SQUARE ALUMINUM PLATE IN TOP OF CENTER OF HEAD WALL ON THE WEST SIDE OF HIGHWAY - 95, NEAR MILE MARKER 88.95
ELEVATION = 764.787 METERS (NAVD'88)
ELEVATION = 2509.14 U.S. SURVEY FEET (NAVD'88)

Avoid cutting underground utility lines. It's costly.

Call before you Dig
1-800-227-2600



NOTE:
MANHOLES IN UNIMPROVED AREAS TO BE A MINIMUM OF 6" ABOVE EXISTING GROUND AND TO BE LOCKING COVER MANHOLES PER SD-3, OF THE 1991 CLARK COUNTY DESIGN AND CONSTRUCTION STANDARDS FOR WASTEWATER COLLECTION SYSTEMS.

NOTE:
CONTRACTOR TO VERIFY HORIZONTAL AND VERTICAL ALIGNMENT OF EXISTING UTILITIES AND TO NOTIFY THE DESIGN ENGINEER IMMEDIATELY OF ANY DISCREPANCIES PRIOR TO CONSTRUCTION

