

SHEET INDEX

1. COVER SHEET
2. PLAN + PROFILE FROM STA. 10+00 TO STA. 10+50
3. PLAN + PROFILE FROM STA. 10+50 TO STA. 20+50
4. PLAN + PROFILE FROM STA. 20+50 TO STA. 41+50
5. PLAN + PROFILE FROM STA. 41+50 TO STA. 53+50
6. PLAN + PROFILE FROM STA. 53+50 TO STA. 65+00
7. PLAN + PROFILE FROM STA. 65+00 TO STA. 70+00
8. PLAN + PROFILE FROM STA. 70+00 TO STA. 76+92.96

IMPROVEMENT PLANS

FOR

DEER SPRINGS RANCH OFF-SITE SANITARY SEWER MAIN EXTENSION PHASE II CITY OF LAS VEGAS STATE OF NEVADA

QUANTITY ESTIMATES	
OVERSIZED SEGMENT FROM STA. 10+00 TO STA. 76+92.96	
ALTERNATIVE "A"	ALTERNATIVE "B" (OVER SIZE)
8" SEWER MAIN 6,423 LF	8" SEWER MAIN 25 LF
STD. SEWER MANHOLES 15	10" SEWER MAIN 0 LF
	12" SEWER MAIN 5,065 LF
	18" SEWER MAIN 1,628 LF
	STD. 48" DIA. SEWER MANHOLES 13
	STD. 60" DIA. SEWER MANHOLES 4
NON-OVERSIZED SEGMENT	
STA. 73+34.00 TO STA. 86+57.33	STA. 0+00 TO STA. 287+78.04
8" SEWER MAIN LF	8" SEWER MAIN LF
STD. SEWER MANHOLES	STD. SEWER MANHOLES

DEVIATION FROM STANDARDS

NONE
CITY OF LAS VEGAS SEWER NOTES

1. ALL CONSTRUCTION AND MATERIALS SHALL BE IN ACCORDANCE WITH THE LATEST EDITION OF THE DESIGN AND CONSTRUCTION STANDARDS FOR WASTEWATER COLLECTION SYSTEMS AND THE UNIFORM STANDARD SPECIFICATIONS FOR PUBLIC WORKS' CONSTRUCTION OFF-SITE IMPROVEMENTS, CLARK COUNTY AREA, NEVADA, AS AMENDED. IN ALL CASES, THESE STANDARDS SHALL SUPERSEDE THE UNIFORM STANDARD SPECIFICATIONS. IT WILL BE THE RESPONSIBILITY OF THE CONTRACTOR TO BE AWARE OF THE CONTENTS OF THE ABOVE SPECIFICATION BOOKS.
2. IT SHALL BE THE CONTRACTOR'S RESPONSIBILITY TO PERFORM CONSTRUCTION AS PER PLANS. ANY ADDITIONS, DELETIONS, OR CHANGES SHALL FIRST MEET WITH THE APPROVAL OF THE CONTROLLING AGENCY.
3. CHISEL "S" OR "G" IN CURBS WHERE SEWER OR GAS LATERALS PASS UNDER THE CURB.
4. POLYVINYL (PVC) SEWER PIPE SHALL MEET ASTM D-3034 SDR 35 SPECIFICATIONS, INSTALLED WITH SAND BEDDING AND BACKFILL OF TYPE II GRAVEL.
5. ALL MANHOLES IN PAVED STREETS 80' R/W AND LARGER, SHALL HAVE CONCRETE COLLARS.
6. TEE SADDLES SHALL BE USED TO CONNECT SEWER LATERALS TO EXISTING MAIN LINES UP TO 12" DIA. SIZE. CONNECTIONS TO 15" OR LARGER MAINS SHALL REQUIRE SPECIAL PROCEDURES.
7. A SEWER MAIN CROSSING OVER A WATER MAIN OR LESS THAN 18" UNDER A WATER MAIN, MUST BE REINFORCED CONCRETE ENCASED FOR A DISTANCE NOT LESS THAN TEN FEET (10') TO EACH SIDE OF THE CENTERLINE OF THE WATER MAIN.
8. ALL CONTRACTORS INSTALLING SEWER MAINS THAT WILL BE UNDER THE JURISDICTION OF THE CONTROLLING AGENCY MUST BE CLASS "A" CONTRACTORS.
9. THE CITY OF LAS VEGAS WILL NOT ACCEPT ANY SEWER MAINS WHICH HAVE A VERTICAL DEFLECTION OF MORE THAN ON TENTH (0.1) OF A FOOT FROM THE PRE-APPROVED CONSTRUCTION PLANS. SEWER MAINS FOUND TO EXCEED THIS TOLERANCE WILL HAVE TO BE REPAIRED OR REMOVED AND REPLACED TO THE SATISFACTION OF THE CITY ENGINEER PRIOR TO ACCEPTANCE BY THE CITY.

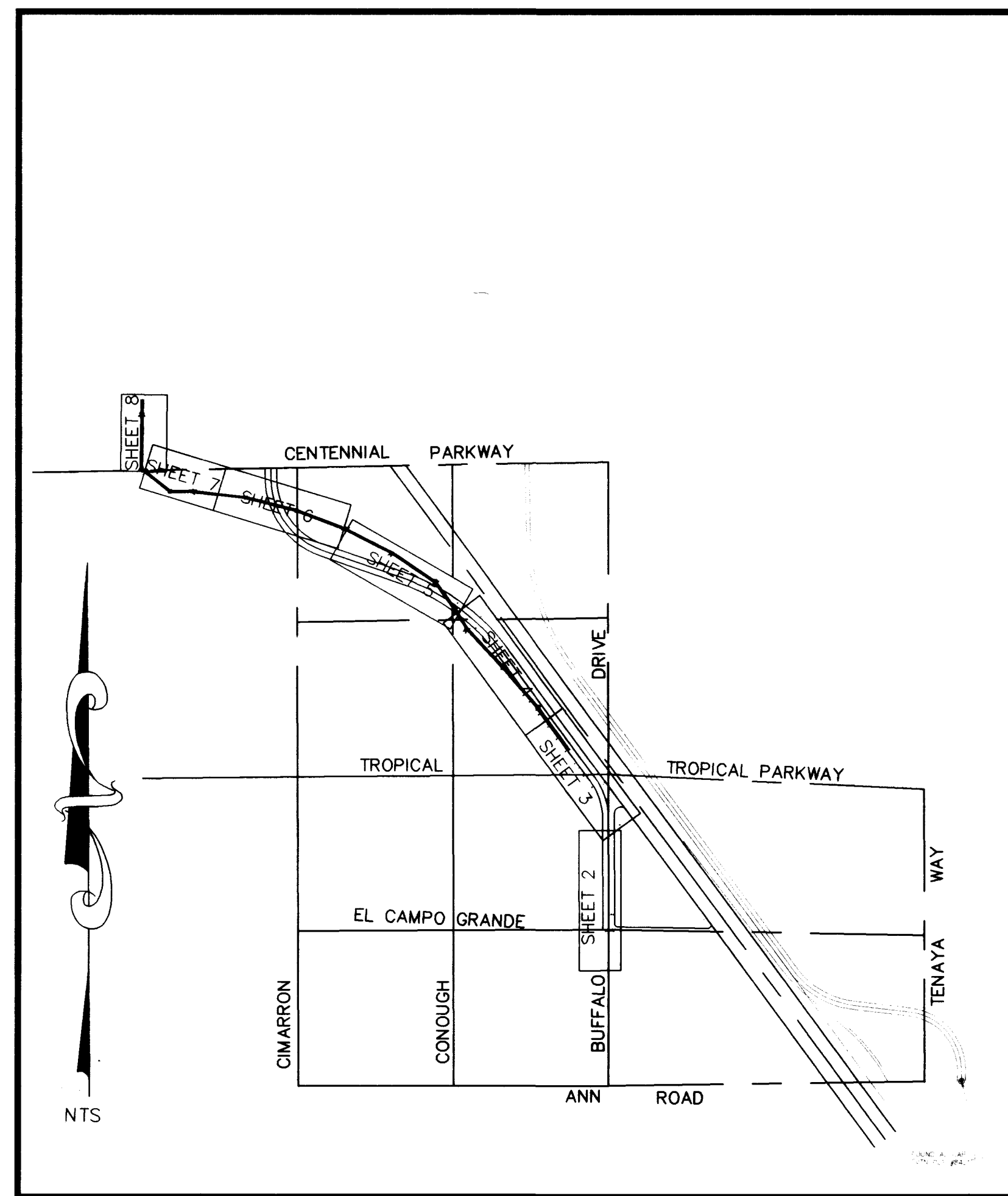
WATER CROSSING NOTE

THE FOLLOWING ARE THE REQUIREMENTS THAT MUST BE MET WHEN THERE IS A WATER-SEWER CROSSING:

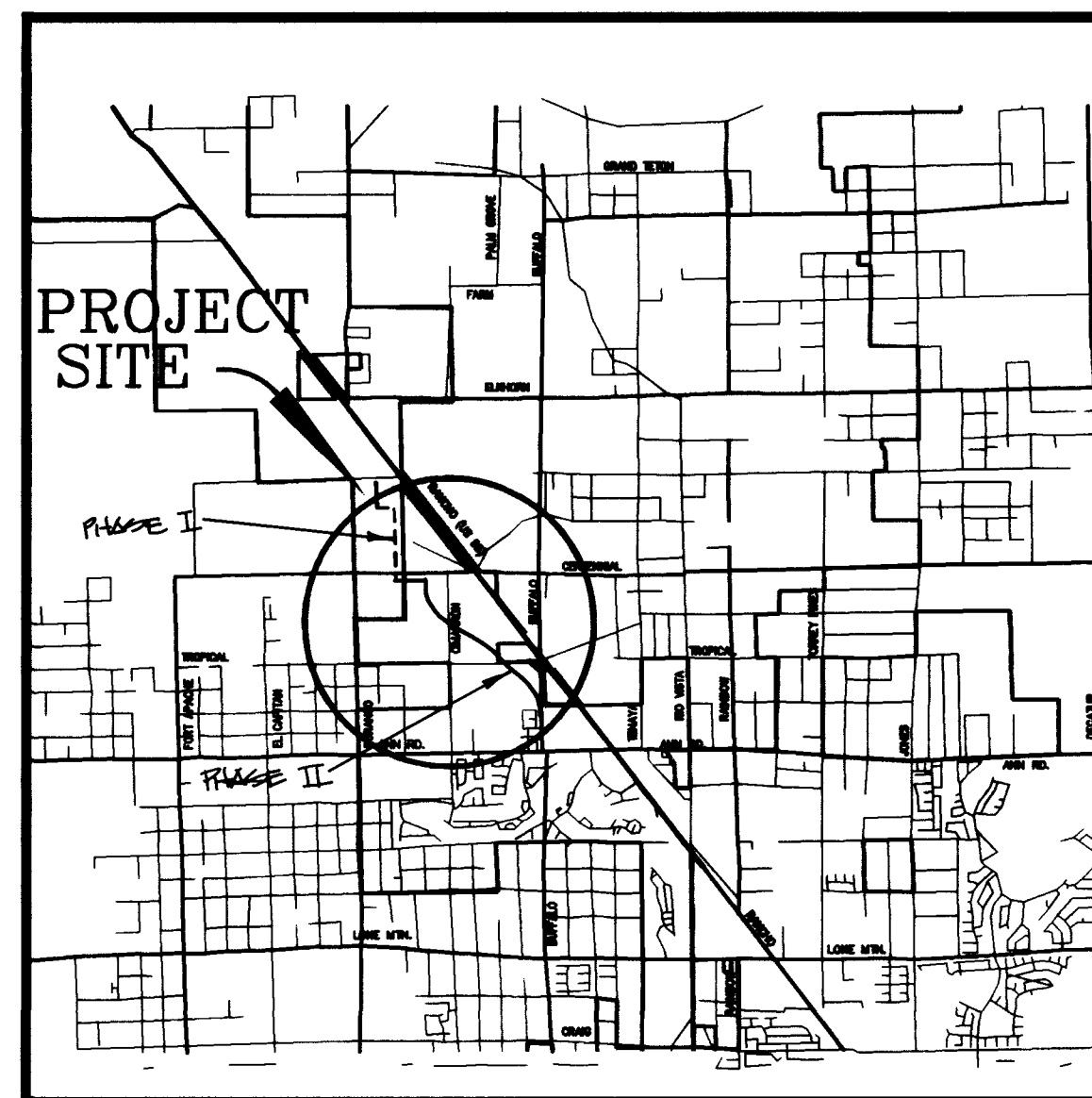
WHEN PROTECTION OF THE WATERLINE IS CONSIDERED, THE MINIMUM VERTICAL DISTANCE OF 18 INCHES MUST BE MAINTAINED WHEN THE WATER LINE IS INSTALLED OVER THE SEWER/STORM LINE. IF THIS DISTANCE CANNOT BE MAINTAINED BECAUSE OF PHYSICAL OBSTRUCTIONS OR THE WATERLINE MUST BE PLACED UNDER THE SEWER/STORM LINE, THE SEWER/STORM LINE MUST BE CONSTRUCTED WITH ANY ONE OF THE FOLLOWING:

- A. EXTRA HEAVY CAST IRON OR DUCTILE IRON PIPE
- B. WATER SUPPLY QUALITY MATERIAL
- C. ENCASEMENT WITH 4 INCHES MINIMUM OF CONCRETE OR SLEEVING WITH WATER QUALITY PIPE

EACH OF THESE PROVISIONS MUST BE EXTENDED FOR 10 FEET ON EITHER SIDE OF THE WATERLINE AT 90 DEGREES TO THE CROSSING.



KEY MAP



VICINITY MAP

GENERAL NOTES

1. ALL CONSTRUCTION AND MATERIALS SHALL BE IN ACCORDANCE WITH THE "UNIFORM STANDARD SPECIFICATION FOR PUBLIC WORKS CONSTRUCTION OFF-SITE IMPROVEMENTS, CLARK COUNTY AREA NEVADA", LATEST ISSUE; THE "UNIFORM STANDARD DRAWINGS FOR PUBLIC WORKS CONSTRUCTION CLARK COUNTY AREA NEVADA", LATEST ISSUES; AND OTHER APPLICABLE APPROVED STANDARD ISSUE BY THE CONTROLLING AGENCY; THE UNIFORM BUILDING CODE; AND ALL LOCAL CITY CODES AND ORDINANCES APPLICABLE, EXCEPT AS NOTED ON THIS SHEET AS DEVIATIONS FROM STANDARDS".
2. THE EXISTENCE AND LOCATION OF ANY OVERHEAD OR UNDERGROUND UTILITY LINES, PIPES, OR STRUCTURES SHOWN ON THESE PLANS ARE OBTAINED BY A RESEARCH OF THE AVAILABLE RECORDS. EXISTING UTILITIES ARE LOCATED ON PLANS ONLY FOR THE CONVENIENCE OF THE CONTRACTOR. EXISTING UTILITY SERVICE LATERALS MAY NOT BE SHOWN ON THE PLANS. THE CONTRACTOR SHALL, AT HIS OWN EXPENSE, LOCATE ALL UNDERGROUND AND OVERHEAD INTERFERENCES WHICH MAY AFFECT HIS OPERATION DURING CONSTRUCTION AND SHALL TAKE ALL NECESSARY PRECAUTIONS TO AVOID DAMAGE TO SAME. THE CONTRACTOR SHALL USE EXTREME CAUTION WHEN WORKING NEAR OVERHEAD OR UNDERGROUND POWER, GAS AND/OR OTHER UTILITIES SO AS TO SAFELY PROTECT ALL PERSONNEL AND EQUIPMENT, AND SHALL BE RESPONSIBLE FOR ALL COSTS AND LIABILITY IN CONNECTION THEREWITH.
3. THE CONTRACTOR SHALL TAKE ALL PRECAUTIONARY MEASURES NECESSARY TO PROTECT EXISTING UTILITY LINES, STRUCTURES, AND STREET IMPROVEMENTS WHICH ARE TO REMAIN IN PLACE, FROM DAMAGE, AND ALL SUCH IMPROVEMENTS OR STRUCTURES DAMAGED BY THE CONTRACTOR'S OPERATIONS SHALL BE REPAIRED OR REPLACED SATISFACTORY TO THE CITY ENGINEER OR OWNING UTILITY COMPANY AT THE EXPENSE OF THE CONTRACTOR.
4. ALL CONSTRUCTION SHALL BE AS SHOWN ON THESE PLANS, ANY REVISIONS SHALL HAVE THE PRIOR WRITTEN APPROVAL OF THE CITY ENGINEER.
5. TYPE V CEMENT SHALL BE USED IN ALL OFF-SITE CONCRETE WORK. CONCRETE TO BE 3000 P.S.I. MINIMUM @ 28 DAYS. MIX DESIGN TO BE APPROVED BY THE QUALITY CONTROL DIVISION PRIOR TO USE ON THE PROJECT.
6. PERMITS ARE REQUIRED FOR ANY WORK IN THE PUBLIC RIGHT-OF-WAY. THE CONTRACTOR SHALL SECURE ALL PERMITS AND INSPECTIONS REQUIRED FOR THIS CONSTRUCTION.
7. EXPANSION JOINTS REQUIRED, MAXIMUM EVERY 300' IN EXTRUDED TYPE CURB.
8. AC PAVEMENT TO BE 1/2" ABOVE LIP OF ALL GUTTERS AFTER COMPACTION, EXCEPT AT SIDEWALK RAMPS.
9. APPLY FOG SEAL ONLY AFTER ALL CORRECTIONS AND ADJUSTMENTS HAVE BEEN MADE.
10. CURB & GUTTER WITH A GRADE OF LESS THAN FOUR TENTHS OF ONE PERCENT SHALL BE WATER TESTED AS SOON AS POSSIBLE AFTER CONSTRUCTION. ANY CURB AND GUTTER FOUND TO BE UNACCEPTABLE TO THE CITY SHALL BE REMOVED AND REPLACED.

DEVELOPER

AMERICAN WEST HOMES, INC.
2700 E. SUNSET ROAD, STE. 5
LAS VEGAS, NV 89120
PHONE (702)736-7970

11. SIDEWALK RAMPS SHALL BE CONSTRUCTED IN EACH QUADRANT OF AN INTERSECTION PER STANDARD DRAWING 235. EXACT LOCATION OF RAMPS MAY BE ADJUSTED IN THE FIELD BY THE CITY INSPECTOR
12. CONTRACTOR SHALL PROVIDE ALL NECESSARY HORIZONTAL AND VERTICAL TRANSITIONS BETWEEN NEW CONSTRUCTION AND EXISTING SURFACES TO PROVIDE FOR PROPER DRAINAGE AND FOR INGRESS AND EGRESS TO NEW CONSTRUCTION. THE EXTENT OF TRANSITIONS TO BE AS SHOWN ON PLANS, OR AS DESIGNATED IN THE FIELD BY A CITY INSPECTOR.
13. ALL GRADING WORK SHALL CONFORM TO THE SOILS REPORT AS PREPARED BY THE SOILS ENGINEER AND APPROVED BY THE CITY ENGINEER, AND AS SHOWN ON THESE PLANS.
14. EXACT LOCATION OF ALL SAW CUT LINES MAY BE DETERMINED IN THE FIELD BY A CITY OF LAS VEGAS INSPECTOR IF LOCATION ON PLANS IS NOT CLEARLY SHOWN, OR EXISTING PAVEMENT CONDITION REQUIRES RELOCATION.
15. THE CONTRACTOR SHALL TAKE ALL PRECAUTIONS NECESSARY TO PROTECT EXISTING PERMANENT SURVEY MONUMENTS. ANY MONUMENTS DISTURBED SHALL BE REPLACED AND ADJUSTED PER AVAILABLE RECORDS IN ACCORDANCE WITH N.R.S. STATUTE NO. 625.550.
16. UTILITY COMPANY METER BOXES, MANHOLE LIDS, VALVE COVERS, ETC. SHALL BE LOCATED OUT OF DRIVEWAYS, DRIVEWAY APRONS, FLOW LINES, AND CROSS GUTTERS UNLESS WRITTEN APPROVAL IS GRANTED BY THE UTILITY COMPANY AND THE CITY ENGINEER.

APPROVAL

Dennis Anderson
DENNIS ANDERSON, P.E.
LAS VEGAS CITY ENGINEER

2-28-97
DATE

APPROVAL OF THESE PLANS BY THE CITY ENGINEER IS LIMITED TO THOSE IMPROVEMENTS CONSTRUCTED IN THE DEDICATED RIGHTS-OF-WAY AND/OR DEDICATED EASEMENTS. THIS APPROVAL DOES NOT AUTHORIZE THE CONSTRUCTION ON ANY IMPROVEMENTS THAT DEVIATE FROM ADOPTED STANDARDS AND/OR SPECIFICATIONS EXCEPT THOSE SPECIFICALLY LISTED UNDER "DEVIATIONS FROM STANDARDS" THE ENGINEER SHALL RESOLVE ANY DEVIATION OTHER THAN THOSE LISTED IN "DEVIATIONS FROM STANDARDS" IN FAVOR OF THE UNIFORM STANDARDS DRAWINGS AND SPECIFICATIONS CLARK COUNTY AREA NEVADA.

BASIS OF BEARINGS

SOUTH 88°55'31" WEST, BEING THE SOUTH LINE OF THE SOUTHWEST QUATER (SW 1/4) OF SECTION 21, T. 19 S., R. 60 E., M.D.M., CLARK COUNTY, NEVADA, COINCIDENT WITH THE CENTERLINE OF CENTENNIAL PARKWAY, AS SHOWN ON THAT CERTAIN MAP ON FILE IN THE OFFICE OF THE COUNTY RECORDER IN FILE 81 OF PARCEL MAPS AT PAGE 28.

Avoid cutting underground utility lines. It's costly.

BENCHMARK

CLARK COUNTY BM # 0090 - 21N06

RIVET AND SQUARE ALUMINUM PLATE IN TOP OF CENTER OF HEAD WALL ON THE WEST SIDE OF HIGHWAY - 95, NEAR MILE MARKER 88.95

ELEVATION = 764.787 METERS (NAVD'88)
ELEVATION = 2509.14 U.S. SURVEY FEET (NAVD'88)

Call before you Dig
1-800-227-2600

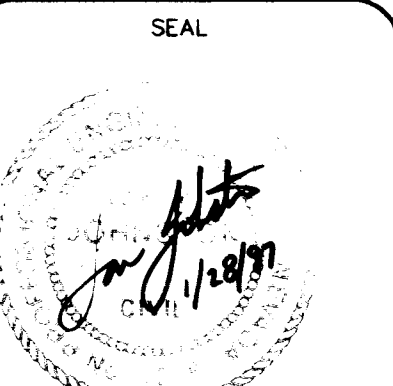
AMERICAN WEST HOMES, INC.
CITY OF LAS VEGAS, NEVADA



CONSULTING ENGINEERS • PLANNERS • LAND SURVEYORS
2727 SOUTH RAINBOW BOULEVARD
LAS VEGAS, NEVADA 89102-5148 PHONE (702) 873-7550 FAX (702) 362-2597

COVER SHEET
DEER SPRINGS RANCH
PHASE II OFF-SITE SEWER

TITLE PROJECT

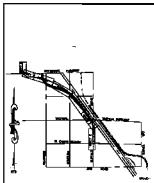


WO NO	4884
BY	IKJ/RDM
DATE	1/27/96
SCALE	HORIZ. NONE VERT. NONE
SHEET	1 OF 8 SHEETS

5594

0-KEY PLAN

1. COVER SHEET
2. PLAN - PEOPLE PROFILES, FROM THE SOUTH
3. PLAN - PEOPLE PROFILES, FROM THE WEST
4. PLAN - PEOPLE PROFILES, FROM THE NORTH
5. PLAN - PEOPLE PROFILES, FROM THE EAST
6. PLAN - PEOPLE PROFILES, FROM THE SOUTH
7. PLAN - PEOPLE PROFILES, FROM THE WEST
8. PLAN - PEOPLE PROFILES, FROM THE NORTH
9. PLAN - PEOPLE PROFILES, FROM THE EAST
10. PLAN - PEOPLE PROFILES, FROM THE SOUTH
11. PLAN - PEOPLE PROFILES, FROM THE WEST
12. PLAN - PEOPLE PROFILES, FROM THE NORTH
13. PLAN - PEOPLE PROFILES, FROM THE EAST



KEY MAP

NAME OF DRAWING

IMPROVEMENT PLANS FOR THE SANITARY SEWER MAIN EXTENSION PROJECT

DATE

NOVEMBER 1988

PROJECT NO. 88-001

DATE: 11/15/88

Call before you Dig
1-800-223-3801

IMPROVEMENT PLANS

FOR

DEER SPRINGS RANCH OFF-SITE SANITARY SEWER MAIN EXTENSION

PHASE II

CITY OF LAS VEGAS
STATE OF NEVADA



VICINITY MAP

GENERAL NOTES

1. THE CITY ENGINEER HAS REVIEWED THE PLANS AND SPECIFICATIONS AND HAS APPROVED THEM FOR CONSTRUCTION.
2. THE CONTRACTOR SHALL BE RESPONSIBLE FOR OBTAINING ALL NECESSARY PERMITS AND APPROVALS FROM THE CITY ENGINEER AND THE STATE ENGINEER.
3. THE CONTRACTOR SHALL BE RESPONSIBLE FOR OBTAINING ALL NECESSARY PERMITS AND APPROVALS FROM THE CITY ENGINEER AND THE STATE ENGINEER.
4. THE CONTRACTOR SHALL BE RESPONSIBLE FOR OBTAINING ALL NECESSARY PERMITS AND APPROVALS FROM THE CITY ENGINEER AND THE STATE ENGINEER.
5. THE CONTRACTOR SHALL BE RESPONSIBLE FOR OBTAINING ALL NECESSARY PERMITS AND APPROVALS FROM THE CITY ENGINEER AND THE STATE ENGINEER.
6. THE CONTRACTOR SHALL BE RESPONSIBLE FOR OBTAINING ALL NECESSARY PERMITS AND APPROVALS FROM THE CITY ENGINEER AND THE STATE ENGINEER.
7. THE CONTRACTOR SHALL BE RESPONSIBLE FOR OBTAINING ALL NECESSARY PERMITS AND APPROVALS FROM THE CITY ENGINEER AND THE STATE ENGINEER.
8. THE CONTRACTOR SHALL BE RESPONSIBLE FOR OBTAINING ALL NECESSARY PERMITS AND APPROVALS FROM THE CITY ENGINEER AND THE STATE ENGINEER.
9. THE CONTRACTOR SHALL BE RESPONSIBLE FOR OBTAINING ALL NECESSARY PERMITS AND APPROVALS FROM THE CITY ENGINEER AND THE STATE ENGINEER.
10. THE CONTRACTOR SHALL BE RESPONSIBLE FOR OBTAINING ALL NECESSARY PERMITS AND APPROVALS FROM THE CITY ENGINEER AND THE STATE ENGINEER.
11. THE CONTRACTOR SHALL BE RESPONSIBLE FOR OBTAINING ALL NECESSARY PERMITS AND APPROVALS FROM THE CITY ENGINEER AND THE STATE ENGINEER.
12. THE CONTRACTOR SHALL BE RESPONSIBLE FOR OBTAINING ALL NECESSARY PERMITS AND APPROVALS FROM THE CITY ENGINEER AND THE STATE ENGINEER.
13. THE CONTRACTOR SHALL BE RESPONSIBLE FOR OBTAINING ALL NECESSARY PERMITS AND APPROVALS FROM THE CITY ENGINEER AND THE STATE ENGINEER.

DESIGNER
CITY OF LAS VEGAS
STATE OF NEVADA

CALCULATED PROJECTIONS

DATE	NOV 15 1988
BY	...
CHECKED BY	...
APPROVED BY	...

- CONTRACTOR'S OBLIGATIONS**
1. THE CONTRACTOR SHALL BE RESPONSIBLE FOR OBTAINING ALL NECESSARY PERMITS AND APPROVALS FROM THE CITY ENGINEER AND THE STATE ENGINEER.
 2. THE CONTRACTOR SHALL BE RESPONSIBLE FOR OBTAINING ALL NECESSARY PERMITS AND APPROVALS FROM THE CITY ENGINEER AND THE STATE ENGINEER.
 3. THE CONTRACTOR SHALL BE RESPONSIBLE FOR OBTAINING ALL NECESSARY PERMITS AND APPROVALS FROM THE CITY ENGINEER AND THE STATE ENGINEER.
 4. THE CONTRACTOR SHALL BE RESPONSIBLE FOR OBTAINING ALL NECESSARY PERMITS AND APPROVALS FROM THE CITY ENGINEER AND THE STATE ENGINEER.
 5. THE CONTRACTOR SHALL BE RESPONSIBLE FOR OBTAINING ALL NECESSARY PERMITS AND APPROVALS FROM THE CITY ENGINEER AND THE STATE ENGINEER.
 6. THE CONTRACTOR SHALL BE RESPONSIBLE FOR OBTAINING ALL NECESSARY PERMITS AND APPROVALS FROM THE CITY ENGINEER AND THE STATE ENGINEER.
 7. THE CONTRACTOR SHALL BE RESPONSIBLE FOR OBTAINING ALL NECESSARY PERMITS AND APPROVALS FROM THE CITY ENGINEER AND THE STATE ENGINEER.
 8. THE CONTRACTOR SHALL BE RESPONSIBLE FOR OBTAINING ALL NECESSARY PERMITS AND APPROVALS FROM THE CITY ENGINEER AND THE STATE ENGINEER.
 9. THE CONTRACTOR SHALL BE RESPONSIBLE FOR OBTAINING ALL NECESSARY PERMITS AND APPROVALS FROM THE CITY ENGINEER AND THE STATE ENGINEER.
 10. THE CONTRACTOR SHALL BE RESPONSIBLE FOR OBTAINING ALL NECESSARY PERMITS AND APPROVALS FROM THE CITY ENGINEER AND THE STATE ENGINEER.
 11. THE CONTRACTOR SHALL BE RESPONSIBLE FOR OBTAINING ALL NECESSARY PERMITS AND APPROVALS FROM THE CITY ENGINEER AND THE STATE ENGINEER.
 12. THE CONTRACTOR SHALL BE RESPONSIBLE FOR OBTAINING ALL NECESSARY PERMITS AND APPROVALS FROM THE CITY ENGINEER AND THE STATE ENGINEER.
 13. THE CONTRACTOR SHALL BE RESPONSIBLE FOR OBTAINING ALL NECESSARY PERMITS AND APPROVALS FROM THE CITY ENGINEER AND THE STATE ENGINEER.

STATE ENGINEER'S NOTE

THE CITY ENGINEER HAS REVIEWED THE PLANS AND SPECIFICATIONS AND HAS APPROVED THEM FOR CONSTRUCTION.

1. THE CONTRACTOR SHALL BE RESPONSIBLE FOR OBTAINING ALL NECESSARY PERMITS AND APPROVALS FROM THE CITY ENGINEER AND THE STATE ENGINEER.
2. THE CONTRACTOR SHALL BE RESPONSIBLE FOR OBTAINING ALL NECESSARY PERMITS AND APPROVALS FROM THE CITY ENGINEER AND THE STATE ENGINEER.
3. THE CONTRACTOR SHALL BE RESPONSIBLE FOR OBTAINING ALL NECESSARY PERMITS AND APPROVALS FROM THE CITY ENGINEER AND THE STATE ENGINEER.
4. THE CONTRACTOR SHALL BE RESPONSIBLE FOR OBTAINING ALL NECESSARY PERMITS AND APPROVALS FROM THE CITY ENGINEER AND THE STATE ENGINEER.
5. THE CONTRACTOR SHALL BE RESPONSIBLE FOR OBTAINING ALL NECESSARY PERMITS AND APPROVALS FROM THE CITY ENGINEER AND THE STATE ENGINEER.
6. THE CONTRACTOR SHALL BE RESPONSIBLE FOR OBTAINING ALL NECESSARY PERMITS AND APPROVALS FROM THE CITY ENGINEER AND THE STATE ENGINEER.
7. THE CONTRACTOR SHALL BE RESPONSIBLE FOR OBTAINING ALL NECESSARY PERMITS AND APPROVALS FROM THE CITY ENGINEER AND THE STATE ENGINEER.
8. THE CONTRACTOR SHALL BE RESPONSIBLE FOR OBTAINING ALL NECESSARY PERMITS AND APPROVALS FROM THE CITY ENGINEER AND THE STATE ENGINEER.
9. THE CONTRACTOR SHALL BE RESPONSIBLE FOR OBTAINING ALL NECESSARY PERMITS AND APPROVALS FROM THE CITY ENGINEER AND THE STATE ENGINEER.
10. THE CONTRACTOR SHALL BE RESPONSIBLE FOR OBTAINING ALL NECESSARY PERMITS AND APPROVALS FROM THE CITY ENGINEER AND THE STATE ENGINEER.
11. THE CONTRACTOR SHALL BE RESPONSIBLE FOR OBTAINING ALL NECESSARY PERMITS AND APPROVALS FROM THE CITY ENGINEER AND THE STATE ENGINEER.
12. THE CONTRACTOR SHALL BE RESPONSIBLE FOR OBTAINING ALL NECESSARY PERMITS AND APPROVALS FROM THE CITY ENGINEER AND THE STATE ENGINEER.
13. THE CONTRACTOR SHALL BE RESPONSIBLE FOR OBTAINING ALL NECESSARY PERMITS AND APPROVALS FROM THE CITY ENGINEER AND THE STATE ENGINEER.

APPROVED

FOR THE CITY ENGINEER
CITY OF LAS VEGAS
STATE OF NEVADA

DATE: 11/15/88

COVER SHEET

DEER SPRINGS RANCH
PHASE II OFF-SITE SEWER

CITY OF LAS VEGAS
STATE OF NEVADA

PROJECT NO. 88-001

DATE: 11/15/88

COVER SHEET

DEER SPRINGS RANCH
PHASE II OFF-SITE SEWER

COVER SHEET

DEER SPRINGS RANCH
PHASE II OFF-SITE SEWER