

H:\AD\LA\MEV\4884\4884.dwg Thu May 23 11:21:40 1996 Plotted by: MGB

12/17/96	INK3	ADDED TRAFFIC IMPROVEMENTS PER CIVIL ENGINEER'S COMMENTS
11/21/96	CH1	ADDED TRAFFIC SIGNAL SIGNAL PER CIVIL ENGINEER'S COMMENTS
8/12/96	CH1	REV. PER CIVIL ENGINEER'S COMMENTS
7/30/96	CH1	REV. PER CIVIL ENGINEER'S COMMENTS
5/10/96	CH1	REV. PER CIVIL ENGINEER'S COMMENTS
1/1	BY	REVISION

AMERICAN WEST HOMES, INC.  
CITY OF LAS VEGAS, NEVADA

CONSULTING ENGINEERS • PLANNERS • LAND SURVEYORS  
2727 SOUTH RAINBOW BOULEVARD  
LAS VEGAS, NEVADA 89102-5148 PHONE (702) 873-7560 FAX (702) 362-2597

MASTER UTILITY PLAN  
DEER SPRINGS RANCH  
UNIT 1

TITLE PROJECT

APPROVED FOR CONSTRUCTION

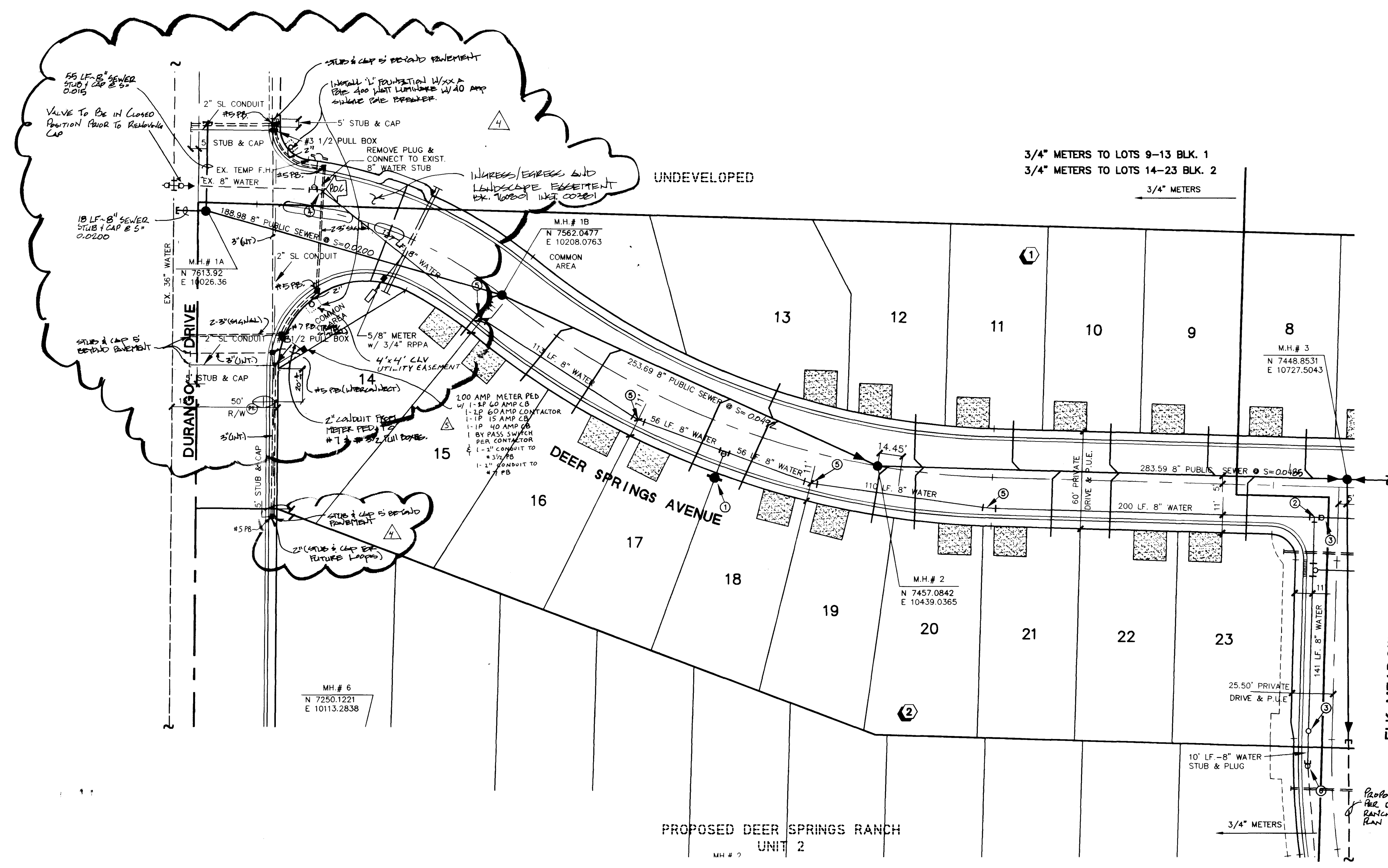
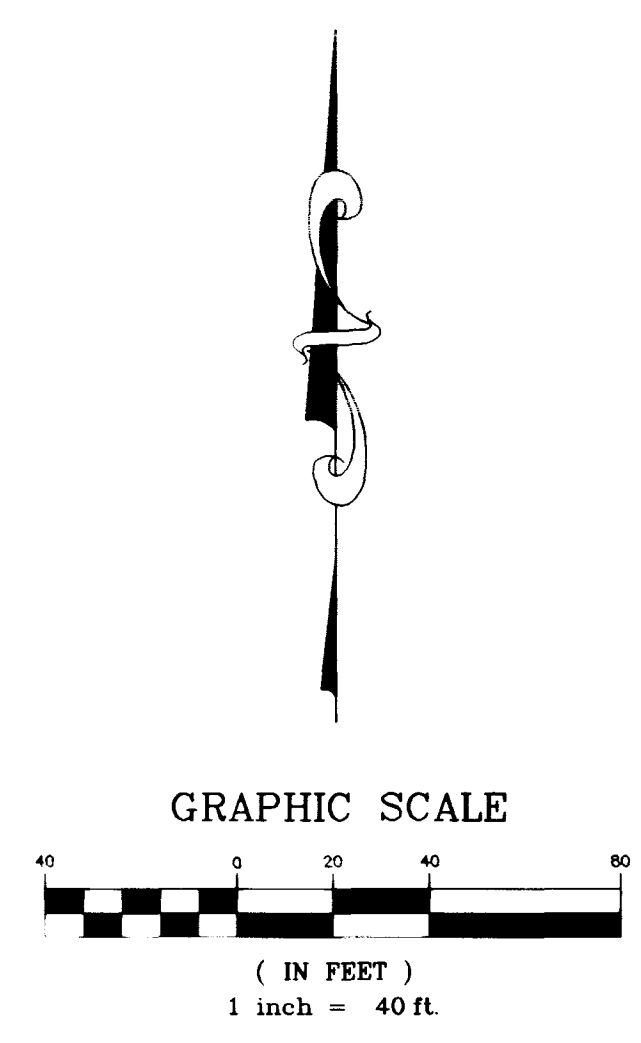
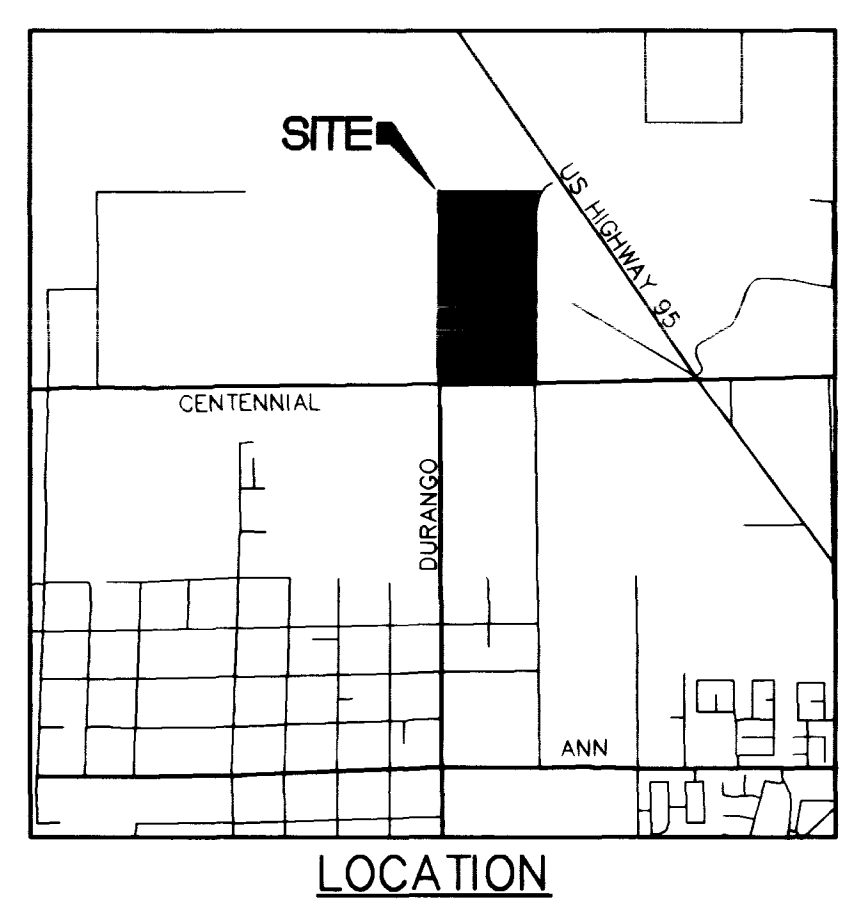
WO NO. 4884-1

BY [Signature]

DATE FEB 96

SCALE HORIZ. 1"=40'  
VERT. NONE

SHEET 6 OF 9 SHEETS



**BASIS OF BEARINGS**

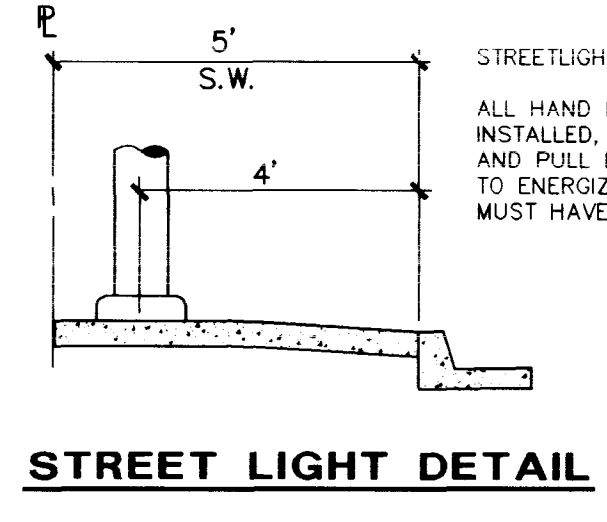
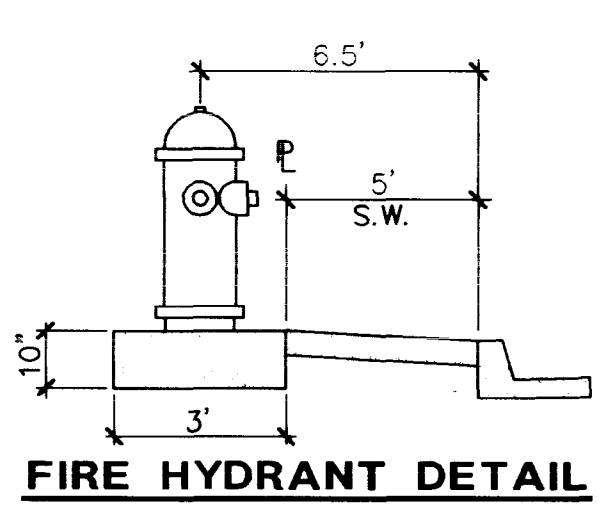
SOUTH 88°55'31" WEST, BEING THE SOUTH LINE OF THE SOUTHWEST QUARTER (SW 1/4) OF SECTION 21, T. 19 S., R. 60 E., N.D.M., CLARK COUNTY, NEVADA, COINCIDENT WITH THE CENTERLINE OF CENTENNIAL PARKWAY, AS SHOWN ON THAT CERTAIN MAP ON FILE IN THE OFFICE OF THE COUNTY RECORDER IN FILE 81 OF PARCEL MAPS AT PAGE 28.

**BENCHMARK**

CLARK COUNTY BM # 0C90 - 21NW6  
RIVET AND SQUARE ALUMINUM PLATE IN TOP OF CENTER OF HEAD WALL ON THE WEST SIDE OF HIGHWAY - 95, NEAR MILE MARKER 88.95  
ELEVATION = 764.787 METERS (NAVD'88)  
ELEVATION = 2509.14 U.S. SURVEY FEET (NAVD'88)

Avoid cutting underground utility lines. It's costly.

**Call before you Dig**  
1-800-227-2600



**STREETLIGHT NOTE**  
ALL HAND HOLE COVERS MUST BE INSTALLED. POLE CAPS CAPS POURED, AND PULL BOX LIDS BOLTED DOWN PRIOR TO ENERGIZING CIRCUIT. ALL WIRE MUST HAVE THW INSULATION.

ELK MEADOW STREET MATCHLINE SEE SHEET 5

Proposed 8" sewer for Deer Springs Ranch off-site sewer ran by VTN Nevada

564

307Y-4478-1

