

SANITARY SEWER NOTE(S)
 1. SEWER CONTRIBUTION: AVG. DAILY FLOW = 0.00950 MGD
 PEAK DAILY FLOW = 0.03325 MGD
 2. THE SEWER LINE PROPOSED BY THE MOUNTAIN GATE TOWNHOMES PROJECT, IN LONE MTN. RD, WILL BE INSTALLED WITH THIS PROJECT IF NOT EXISTING AT TIME OF DEVELOPMENT.
 3. A SEGMENT OF THE DOWNSTREAM SEWER SYSTEM(S) HAS NOT BEEN COMPLETED AND/OR ACCEPTED FOR MAINTENANCE, ANY CONSTRUCTION PERFORMED ON THIS PROJECT PRIOR TO THE COMPLETION OF THE DOWNSTREAM SEWER SYSTEM(S) SHALL BE DONE AT THE DEVELOPER'S OWN RISK. THE CITY OF LAS VEGAS RESERVES THE RIGHT TO PREVENT THIS PROJECT FROM CONNECTING TO THE SEWER SYSTEM(S) UNTIL SUCH TIME AS THE DOWNSTREAM SYSTEM(S) HAVE BEEN COMPLETED, AND/OR ACCEPTED FOR MAINTENANCE.

ESTIMATE OF QUANTITIES

| SEWER | QUANTITY |
|--------------------------------|----------|
| 8" PVC SEWER MAIN | 1317 LF± |
| 4" PVC SEWER LATERAL | 1192 LF± |
| ① 4" DIAM SEWER MANHOLE | 3 EA |
| WATER | |
| 8" PVC WATER MAIN | 1412 LF± |
| 6" PVC WATER MAIN | 178 LF± |
| 1" WATER SERVICE | 38 EA |
| 3/4" METER | 38 EA |
| ② 8"x8" Tee | 2 EA |
| ③ 8" GATE VALVE | 4 EA |
| ④ 8", 90° BEND | 1 EA |
| ⑤ 8", 45° BEND | 2 EA |
| ⑥ STD. FIRE HYDRANT W/ASSEMBLY | 3 EA |
| ⑦ 2" BLOW OFF ASSEMBLY | 2 EA |
| ⑧ 8" - 6" REDUCER | 1 EA |

STORM DRAIN (SEE GRADING PLAN FOR DESIGN)

| | |
|------------------------------------|--------|
| TYPE "A" INLET (W = 4', D = 3.15') | 1 EA |
| 18" RCP | 21 LF |
| 6" PVC | 415 LF |
| 6" 45° BEND | 1 EA |
| CLEAN OUT | 1 EA |

STREET LIGHTS

| | |
|--|----------|
| ① 400 W.H.P.S. ST. LT. (ON TRAF. SIGNAL POLE) | 1 EA |
| ② 250 W.H.P.S. STREET LIGHT | 5 EA |
| ③ 200 W.H.P.S. STREET LIGHT | 3 EA |
| ④ 100 W.H.P.S. STREET LIGHT | 8 EA |
| ⑤ NO. 3 1/2 PULL BOX | 3 EA |
| ⑥ 1 1/4" PVC CONDUIT | 2678 LF± |
| ⑦ 200A, 120/240V, 10 3W SERVICE PEDESTAL (404.1412) W/200 AMP BRK FOR ST. LTS. & 1 PHS AMP BRK FOR ST. LTS. # 2 PULLBOX CONTRACTOR | 1 EA |

TRAFFIC SIGNAL

| | |
|---------------------------------|----------|
| POLE (SEE 20 & NOTE) | 1 EA |
| ① NO. 5 PULL BOX (INTERCONNECT) | 7 EA |
| ② NO. 7 PULL BOX | 1 EA |
| ③ 1 1/4" CONDUIT | 395 LF± |
| ④ 2" INTERCONNECT CONDUIT | 1356 LF± |
| ⑤ 3" CONDUIT (404.1306) | 258 LF± |

MISC.

| | |
|---|------|
| ① STREET NAME SIGN (9" D3) | 8 EA |
| ② STOP SIGN (R1-1) | 2 EA |
| ROAD NARROWS (WS-1) | 1 EA |
| ③ NO PARK. SIGN (R8-3A 24" X 24") | 6 EA |
| ④ SPEED LIMIT SIGN (R2-1 24" X 30") (25 MPH.) | 2 EA |
| REFLECTOR SIGN (OM-3R) | 4 EA |

TRAFFIC SIGNAL POLE NOTE

STD. ST. LT. POLE W/ 250 W.H.P.S. TIE INTO STREET LIGHT CIRCUIT. INSTALL TYPE "L" FOUNDATION 404.209 WITH BASE ADAPTOR PLATE 404.409. TIE INTO #7 PULLBOX WITH 2" CONDUIT.

UTILITY LATERAL NOTE

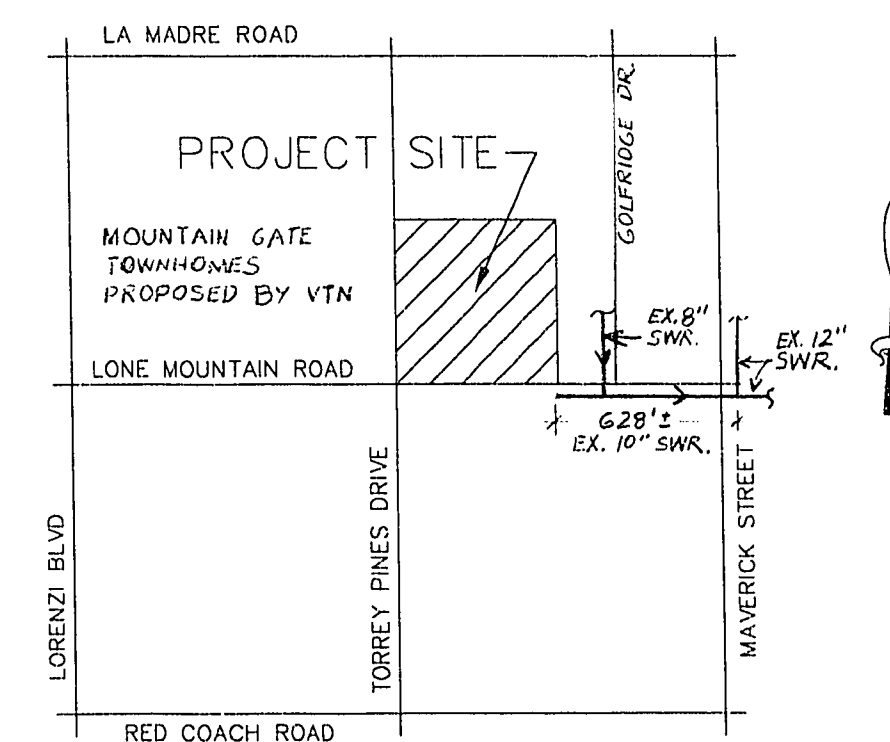
SEWER AND WATER SERVICE LATERAL LOCATIONS ARE APPROXIMATE. THE LATERALS ARE NOT TO BE LOCATED UNDER DRIVEWAYS AND 4" MINIMUM SEPARATION MUST BE PROVIDED BETWEEN SEWER AND WATER LATERALS SERVING ONE BUILDING.

STREET LIGHT NOTE

STREET LIGHTS TO BE LOCATED PER STD. DWG'S: 302, 303, 305, 306, 307 & 318

FIRE FLOW DATA

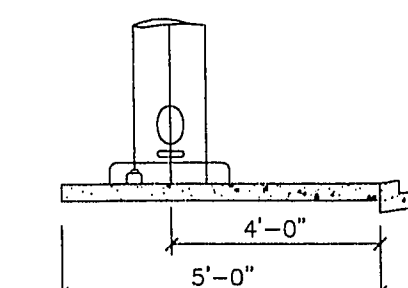
FIRE FLOW REQUIREMENT IS 1500 GPM @ 20 PSI RESIDUAL
 BASED ON:
 SQUARE FOOTAGE: LESS THAN 2400 SF
 LARGEST AREA BETWEEN AREA SEPARATION WALLS: N/A
 HEIGHT: 2 STORY, MAXIMUM 25'
 TYPE OF CONSTRUCTION: FRAME/STUCCO (V-N)
 EXPOSURE: 10' MIN
 SPRINKLER SYSTEM: N/A
 OCCUPANCY: SINGLE FAMILY
 ROOF CONSTRUCTION: WOOD FRAME/CLAY TILE
 REVIEWED BY:
 DATE:



VICINITY MAP

LEGEND

- EXISTING POWER POLE
- EXISTING STREET LIGHT
- PROPOSED STREET LIGHT
- EXISTING EDGE OF AC PAVING
- BLOCK NUMBER
- PROPOSED STREET LIGHT CONDUIT
- PROPOSED 2" CONDUIT FOR TRAFFIC SIGNAL INTERCONNECT
- PROPOSED 2" CONDUIT LOOP
- PROPOSED 3" CONDUIT
- STOP SIGN
- STREET NAME SIGNS
- PROPOSED FIRE HYDRANT
- EXISTING FIRE HYDRANT
- PROPOSED DRIVEWAY LOCATION
- PHOTO CELL



STREET LIGHT LOCATION

NOTE: ALL HAND HOLE COVERS MUST BE INSTALLED, POLE CAPS PAIRED, & PULL BOX LIDS BOLTED DOWN PRIOR TO ENERGIZING CIRCUIT. ALL WIRE MUST HAVE THIN INSULATION.

WATER SERVICE NOTE

A 1" X 3/4" ANGLE METER STOP AND 3/4" METER BOX WILL BE REQUIRED WITH THE 1" SERVICE LATERALS FOR ALL SERVICES WITH 5/8" OR 3/4" SERVICES. DETAILS OF THE ABOVE INSTALLATION ARE AVAILABLE FROM THE ENGINEERING SERVICES DIVISION AND FROM THE DISTRICT'S INSPECTORS.

DEVELOPER/OWNER

THE LARRY S. LARKIN FAMILY TRUST
 1700 E. DESERT INN #405
 LAS VEGAS, NEVADA 89109

L.V.V.D. STICKER
 PROJECT NAME: Elegance 2
 This project water plan complies with the Las Vegas Valley Water District's technical requirements. However, this water plan is NOT GUARANTEED FOR CONSTRUCTION at this time and this signature does not provide or imply a water constant.
Janet B. Johnson 3/2/95
 DATE

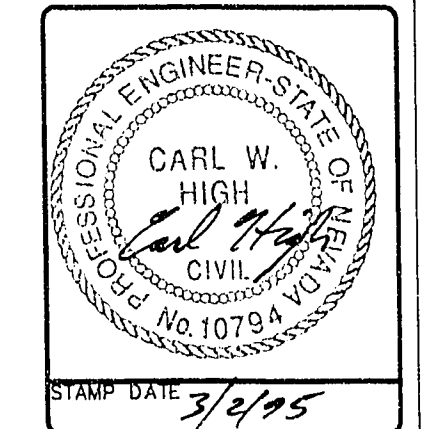
Carl Lambert 3-3-95
 NEVADA POWER DATE
James Madala 3-3-95
 L.V.V. FIRE DEPARTMENT DATE
1270 JFB 8-23-95
 L.V.V.W.D. DATE

NOTICE TO CONTRACTOR!

EXISTING UTILITY LOCATIONS SHOWN HEREON ARE APPROXIMATE ONLY. IT SHALL BE THE CONTRACTOR'S RESPONSIBILITY TO DETERMINE THE EXACT VERTICAL AND HORIZONTAL LOCATION OF ALL EXISTING UNDERGROUND UTILITIES PRIOR TO COMMENCING CONSTRUCTION. NO REPRESENTATION IS MADE THAT ALL EXISTING UTILITIES ARE SHOWN HEREON. THE ENGINEER ASSUMES NO RESPONSIBILITY FOR UTILITIES NOT SHOWN OR UTILITIES NOT SHOWN IN THEIR PROPER LOCATION.

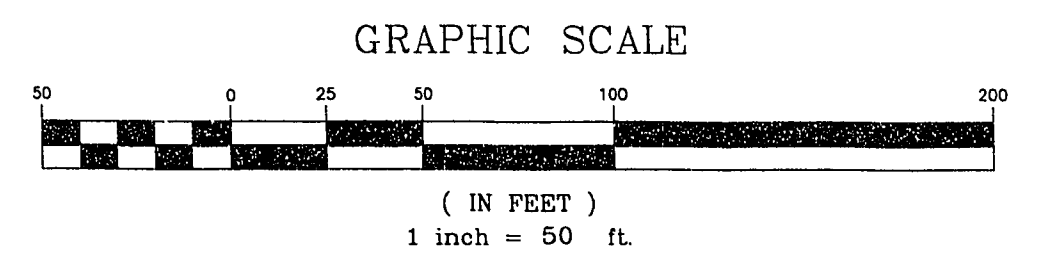
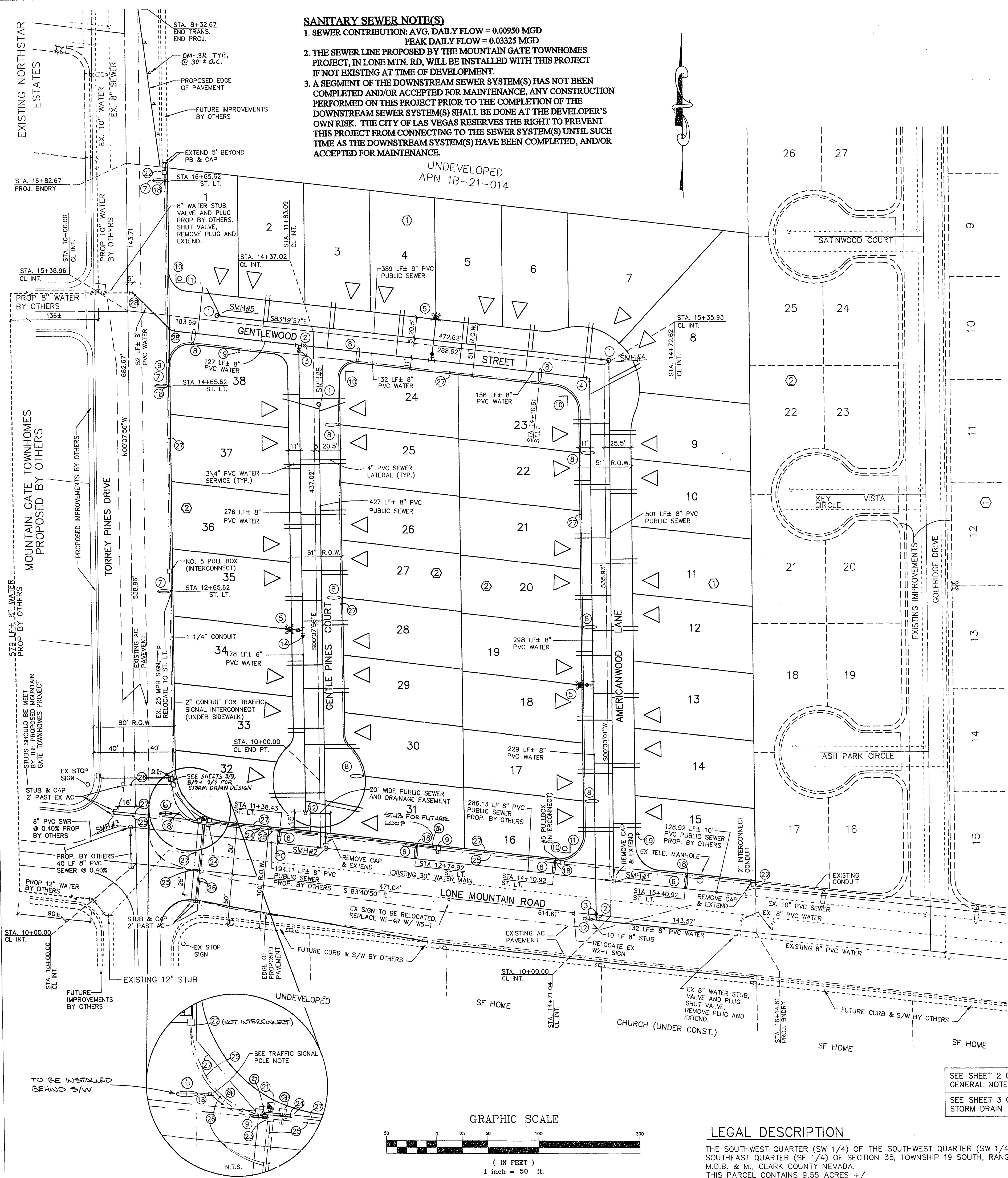
AVOID CUTTING UNDERGROUND UTILITIES. IT'S COSTLY.
CALL before you DIG
 1-800-227-2600
 UNDERGROUND SERVICE (USA)

| NO. | DATE | BY | APP'D | REVISION DESCRIPTION |
|-----|------|----|-------|----------------------|
| | | | | |



STAMP DATE: 3/2/95
SOUTHWEST ENGINEERING
 LAND PLANNING-MAPPING-DEVELOPMENT
 5426 W. VEGAS DRIVE
 LAS VEGAS, NEVADA 89108
 (702) 648-9700

MASTER UTILITY
ELEGANCE 2
 TITLE PROJECT
 WORK ORDER NO: 941108
 DESIGN BY: C.M./C.H./M.J.
 DATE: 5/23/95
 SCALE: 1" = 50'
 CADFILE: ELG2UTL.DWG
 SHEET 4 OF 9 SHEETS



LEGAL DESCRIPTION
 THE SOUTHWEST QUARTER (SW 1/4) OF THE SOUTHWEST QUARTER (SW 1/4) OF THE SOUTHEAST QUARTER (SE 1/4) OF SECTION 35, TOWNSHIP 19 SOUTH, RANGE 60 EAST, M.D.B. & M., CLARK COUNTY NEVADA.
 THIS PARCEL CONTAINS 9.55 ACRES +/-

SEE SHEET 2 OF 9 FOR GENERAL NOTES
 SEE SHEET 3 OF 9 FOR STORM DRAIN