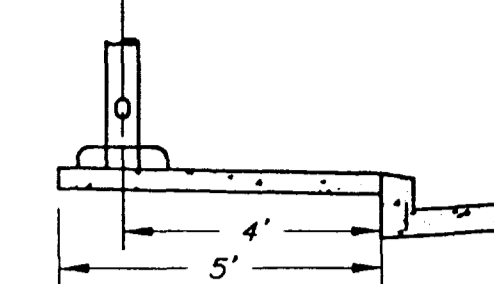
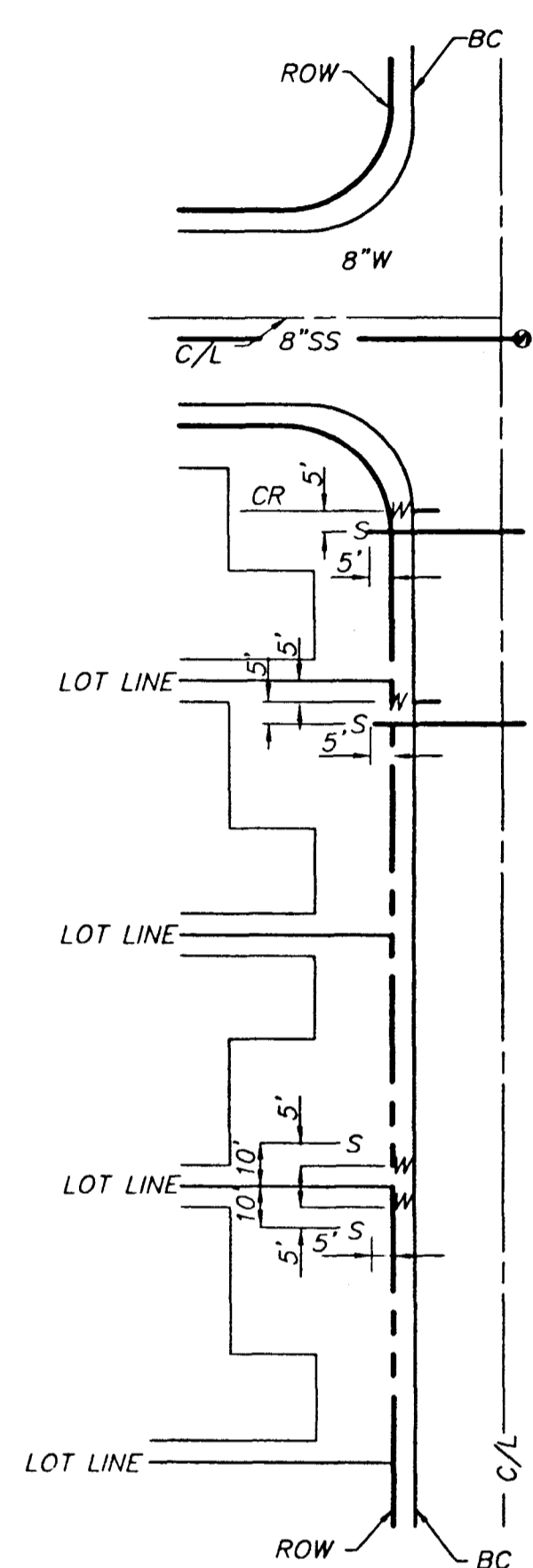


STREET LIGHT NOTE

1. ALL HAND HOLE COVERS MUST BE INSTALLED, POLE CAPS POURED, AND PULL BOX LIDS BOLTED DOWN PRIOR TO ENERGIZING CIRCUIT. ALL WIRE MUST HAVE THW INSULATION.



STREET LIGHT LOCATION
(PER C.L.V. STD. DWG. #318)



TYPICAL LATERAL LOCATION
NOT TO SCALE

- NOTES:
1. THESE LOCATIONS ARE TYPICAL TO ALL LOTS UNLESS OTHERWISE NOTED.
 2. SEWER STUB SHALL BE LOCATED 5.0' FROM R.O.W. LINE.
 3. WATER METER LOCATION SHALL BE PER LVVWD STD PLATE NO 1

CONSTRUCTION NOTES

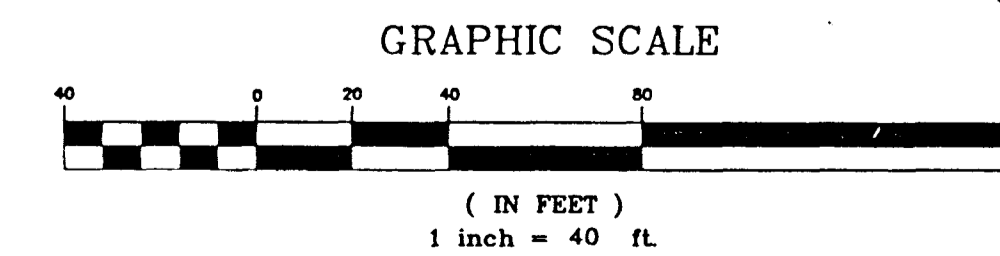
- (7) STREET NAME SIGN
- (8) TRAFFIC SIGN
- (10) 100W HPS STREET LIGHT
- (11) 1 1/4" STREET LIGHT CONDUIT
- (12) STOP SIGN

BENCH MARK

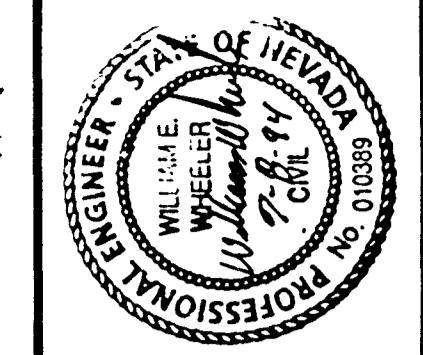
BM NO 1LV9020NES
ALUMINUM TAG AT THE INTERSECTION OF ELKHORN ROAD AND DURANGO DRIVE.
ELEVATION = 2528.49



NORTH



Wanda Rochman 9/8/94
DATE
NEVADA POWER COMPANY APPROVAL IS ONLY FOR THE PLACEMENT AND CLEARANCE OF STREET LIGHT AND SIGNAL LIGHT INSTALLATION.



PLANNING	11/14/97	DATE	154	APPROVAL
CIVIL ENGINEERING				
ENVIRONMENTAL SERVICES				
LAND SURVEYING				
DEVELOPER SERVICES				
PUBLIC WORKS				
WATER RESOURCES				
ADDED AS BUILT SEWER LOCATIONS				
STREET CHANGE - BLOCK 4, 3, AND				
REVISED PARCELS 4				
DESCRIPTION				
DATE				
REV				
1	2-9-95	ADDED AS BUILT SEWER LOCATIONS		
2	9-26-97	STREET CHANGE - BLOCK 4, 3, AND		
3	11/14/97	REVISED PARCELS 4		

ENGINEER



THE KEITH COMPANIES, NEVADA

WATT/MORADI CO.

ELKHORN SPRINGS-PARCEL 4

MASTER UTILITY PLAN

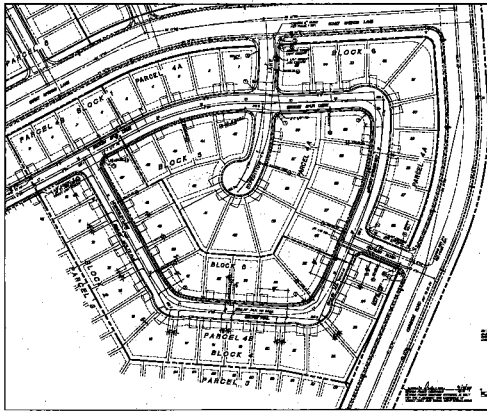
SHEET NO.:

8

8 OF 12 SHEETS

HP Design/Plot 11 HP-GL/2 ADI 4.2 Plotter driver by Hewlett-Packard 1.0

AS-2011-11



STREET LIGHTING

1. ALL STREETS SHALL BE LIGHTED BY THE CITY OF LAS VEGAS. THE LIGHTING SHALL BE OF THE TYPE AND SPACING AS SHOWN ON THE CITY OF LAS VEGAS STANDARD SPECIFICATIONS FOR STREET LIGHTING.



STREET LIGHT LOCATIONS



DATE	11/11/11
PROJECT	GLASSBORO PHASE 4
CLIENT	THE KEITH COMPANIES, INC.
SCALE	AS SHOWN
DRAWN BY	AS-2011-11
CHECKED BY	
APPROVED BY	

THE KEITH COMPANIES, INC.
 1100 S. LAS VEGAS BLVD., SUITE 1000
 LAS VEGAS, NEVADA 89102
 (702) 735-1111
 WWW.THEKEITHCOMPANIES.COM



THE KEITH COMPANIES, INC.
 1100 S. LAS VEGAS BLVD., SUITE 1000
 LAS VEGAS, NEVADA 89102
 (702) 735-1111
 WWW.THEKEITHCOMPANIES.COM

- 1. ALL STREETS SHALL BE LIGHTED BY THE CITY OF LAS VEGAS.
- 2. THE LIGHTING SHALL BE OF THE TYPE AND SPACING AS SHOWN ON THE CITY OF LAS VEGAS STANDARD SPECIFICATIONS FOR STREET LIGHTING.
- 3. ALL STREETS SHALL BE LIGHTED BY THE CITY OF LAS VEGAS.

CONSTRUCTION NOTES

- 1. ALL STREETS SHALL BE LIGHTED BY THE CITY OF LAS VEGAS.
- 2. THE LIGHTING SHALL BE OF THE TYPE AND SPACING AS SHOWN ON THE CITY OF LAS VEGAS STANDARD SPECIFICATIONS FOR STREET LIGHTING.
- 3. ALL STREETS SHALL BE LIGHTED BY THE CITY OF LAS VEGAS.

CONSTRUCTION NOTES

- 1. ALL STREETS SHALL BE LIGHTED BY THE CITY OF LAS VEGAS.
- 2. THE LIGHTING SHALL BE OF THE TYPE AND SPACING AS SHOWN ON THE CITY OF LAS VEGAS STANDARD SPECIFICATIONS FOR STREET LIGHTING.
- 3. ALL STREETS SHALL BE LIGHTED BY THE CITY OF LAS VEGAS.

CONSTRUCTION NOTES

- 1. ALL STREETS SHALL BE LIGHTED BY THE CITY OF LAS VEGAS.
- 2. THE LIGHTING SHALL BE OF THE TYPE AND SPACING AS SHOWN ON THE CITY OF LAS VEGAS STANDARD SPECIFICATIONS FOR STREET LIGHTING.
- 3. ALL STREETS SHALL BE LIGHTED BY THE CITY OF LAS VEGAS.

CONSTRUCTION NOTES

- 1. ALL STREETS SHALL BE LIGHTED BY THE CITY OF LAS VEGAS.
- 2. THE LIGHTING SHALL BE OF THE TYPE AND SPACING AS SHOWN ON THE CITY OF LAS VEGAS STANDARD SPECIFICATIONS FOR STREET LIGHTING.
- 3. ALL STREETS SHALL BE LIGHTED BY THE CITY OF LAS VEGAS.

AS SHOWN

AS SHOWN

AS SHOWN

AS SHOWN

AS SHOWN

AS SHOWN

AS SHOWN



AS-2011-11