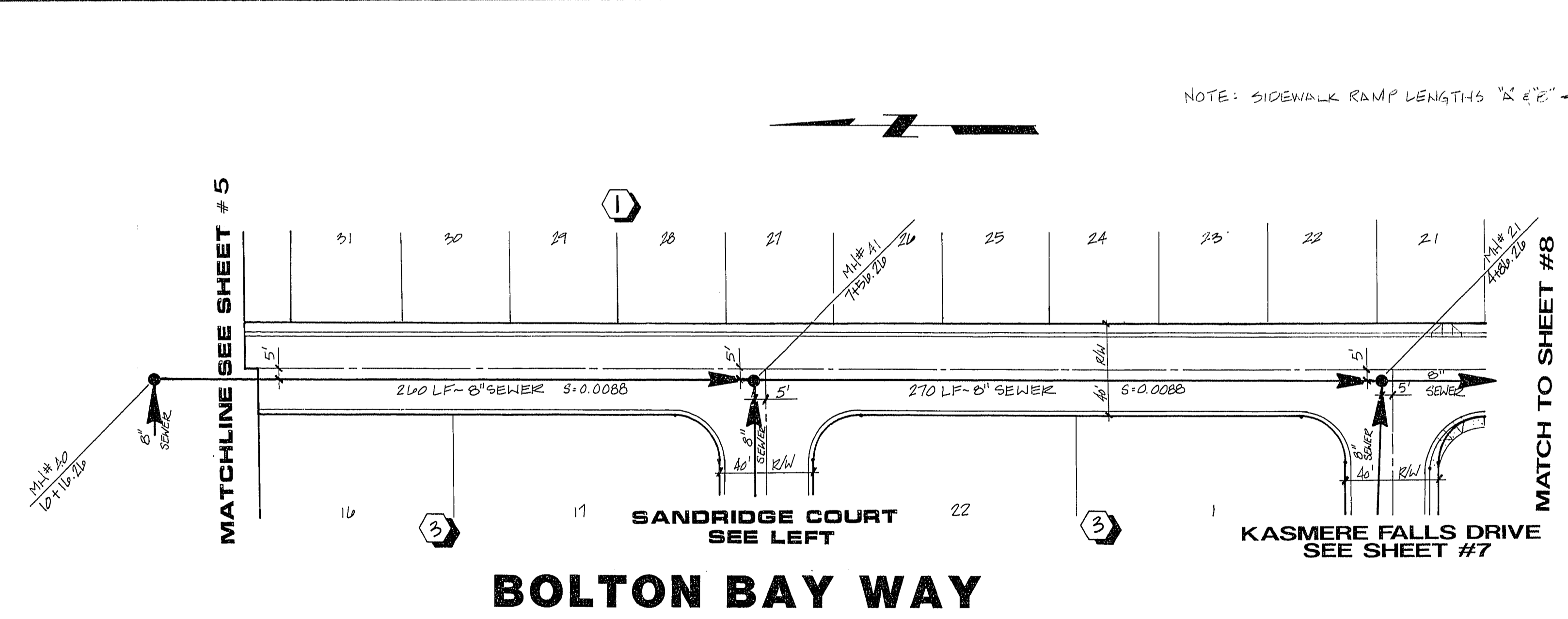


**SANDRIDGE COURT**  
SEE RIGHT



**BOLTON BAY WAY**  
SEE LEFT

NOTE: SIDEWALK RAMP LENGTHS "R" & "R" - 8'

**BENCHMARK**  
BM = U.S.G.S. Brass Cap  
and Conc. stamped 8169 Reset 1963  
Elev. = 2357.04  
Approx. 400' No. Ann Road & 4.0' East of  
the East E.P. NB Lane of Oran Gragon Expressway

DESERT CREEK ASSOCIATES  
LAS VEGAS, NEVADA

DESERT CREEK ASSOCIATES • PLANNERS • LAND SURVEYORS  
2727 SOUTH RAINBOW BOULEVARD  
LAS VEGAS, NEVADA 89102-5148 PHONE (702) 873-7550 FAX (702) 362-2597

mtm nevada

**SEWER PLAN & PROFILE**  
SANDRIDGE COURT & BOLTON BAY WAY

**DESERT CREEK**  
PHASE II UNIT 2

SEAL

12-7-92

WO NO. 4008  
BY JG/KFN  
DATE 11/92  
SCALE HORIZ. 1"=40'  
VERT. 1"=4'  
SHEET 6 OF 8 SHEETS