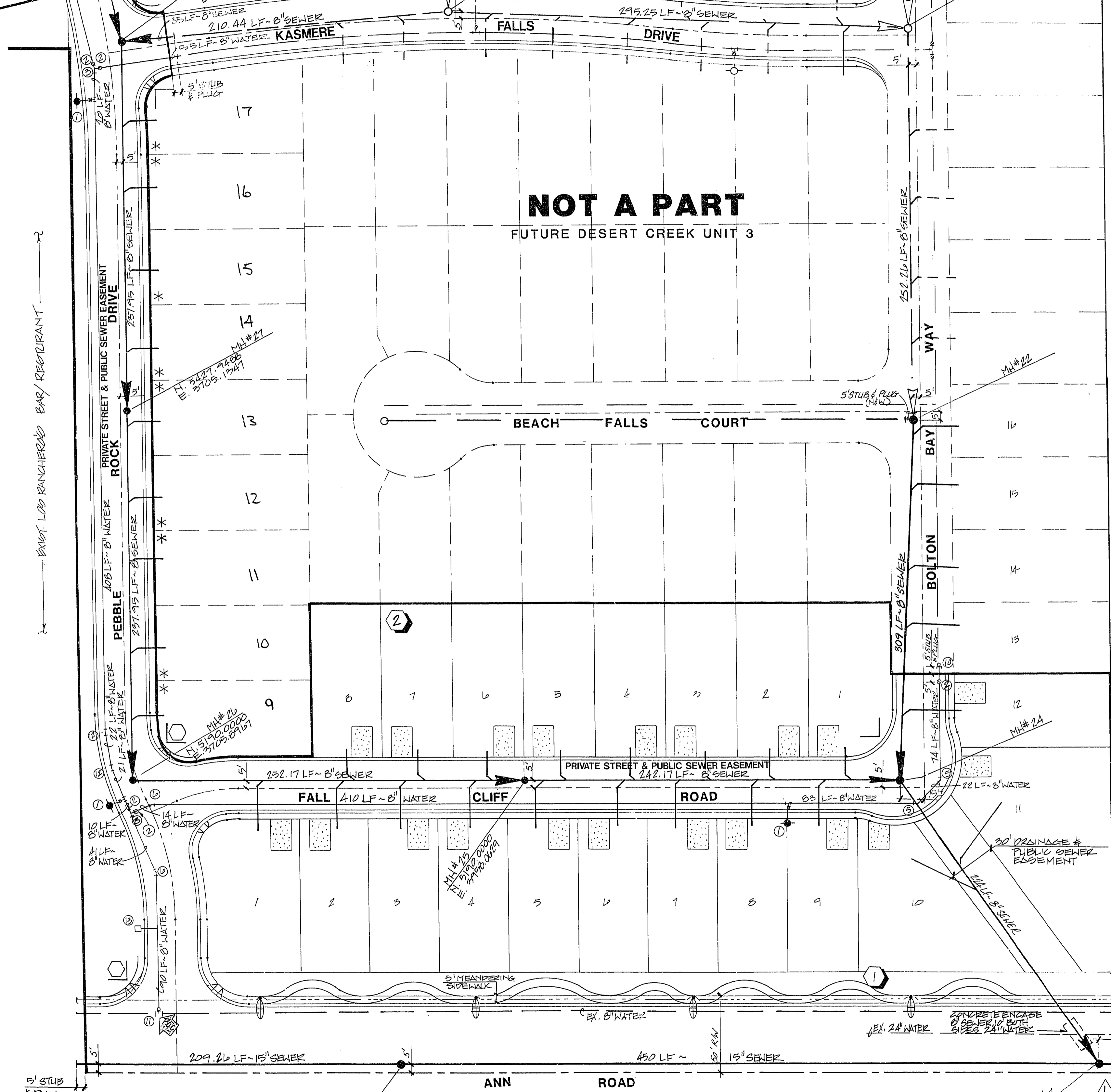


MATCHLINE SEE SHEET #6



NOT A PART
FUTURE DESERT CREEK UNIT 3

- LAS VEGAS VALLEY WATER DISTRICT STANDARD PRACTICES**
- No work shall begin on the water plan until they have been released for construction by the LVWD. Following approval of the plans, notice shall be given to the LVWD Customer Service Department (870-4194) 48 hours prior to actual construction, and 24 hours prior to an inspection.
 - Call Before You Dig 1-800-227-5600.
 - All work shall conform to LVWD latest standard plates, drawings, and specifications.
 - All work, except as modified hereon or by Note 3, shall be done in accordance with the most current drafts or addition of the Uniform Standard Specifications for Public Works Construction Office Improvements, Clark County Area.
 - District approved service saddles or tapped collars shall be required on all 3/4" and 1" service laterals. Service saddles only shall be permitted on 1-1/2" and 2" service laterals. Double tapped collars are not permitted.
 - COPPER SERVICE LATERALS:** All 3/4" to 2" service laterals shall be of copper tubing in accordance with the District's specifications and standard plates.
- The maximum allowable joint deflection for ACP and Ductile Iron pipe shall be as follows:
- | Pipe sizes | AGE | Ductile Iron Slip Joints | Ductile Iron mechanical joint |
|--------------|-------------|--------------------------|-------------------------------|
| 6 inch | 2.5 degrees | 2.5 degrees | 3.5 degrees |
| 8 - 12 inch | 2.5 " | 2.5 " | 2.5 " |
| 14 - 16 inch | 2.0 " | 1.5 " | 1.5 " |
| 18 - 24 inch | N/A | 1.5 " | 1.5 " |
- On PVC pipe, the maximum offset for a 20' length of factory belled pipe shall be 16 inches for 6" pipe, 12 inches for 8" pipe, and 9 inches for 10" and 12" pipe.
- If these offsets conflict with the pipe manufacturer's recommendation, the more stringent requirement shall apply.
- All water meter boxes shall be located outside of driveway areas.
 - All valves shall be located outside of driveways and valley gutters.
 - Detector tape shall be required in accordance with Standard Plate No. 13 where indicated, and as follows:
 - over all mains not installed 6 feet from back of curb,
 - over all service laterals not installed at right angles to main.
 - All water mains shall be pressure tested at 200 psi for a continuous 150 minute period, in accordance with District Standards.
 - All water mains shall be disinfected, flushed, and an acceptable health sample obtained, prior to the connection of the water mains and/or laterals to the District's system.
 - Contractor to obtain all meter: 3" and smaller from LVWD Central Stores. Telephone 258-3152 (forty-eight) 1481 hours prior to pickup.

SEE SHEET 6 FOR LEGEND

* FUTURE SERVICE LATERALS (3/4" through 2") (LOTS 9 THRU 17, BLOCK 2)

If any of the service laterals to be installed for future lots are incorrectly located or are not used for any reason when the lots are developed, the developer shall abandon the laterals at the connection to the active main in accordance with the District's standards and at the developer's expense.

Installation of service laterals (3/4" to 2") only for future lots shall include:

- District approved service saddles or tapping collars.
- corporation stop.
- copper service lateral.
- angle meter stop, meter box and meter.

L.V.W.D. 12-13-91 DATE

NOTE:
FOR NOTES, LEGEND, VICINITY MAP, DETAILS, SIGNATURES, QUANTITIES, ETC. SEE SHEET #6

DESERT CREEK ASSOCIATES
LAS VEGAS, NEVADA

CONSULTING ENGINEERS • PLANNERS • LAND SURVEYORS
2727 SOUTH RAINBOW BOULEVARD
LAS VEGAS, NEVADA 89102-5148 PHONE (702) 873-7550 FAX (702) 362-2557

REVISION
1-28-91
1-21-91
1-21-91

DESIGNER: KFN
CHECKER: KFN
DATE: 1-21-91
BY: KFN

PROJECT: DESERT CREEK PHASE II UNIT 1

SCALE: 1"=40'

SHEET 7 OF 14 SHEETS

MASTER UTILITY PLAN
DESERT CREEK
PHASE II UNIT 1

SEAL
10-22-91

WO NO. A000-1
BY KFN, LWR
DATE AUG, 1991
SCALE 1"=40'
SHEET 7 OF 14 SHEETS

3074-4074-ZI-1