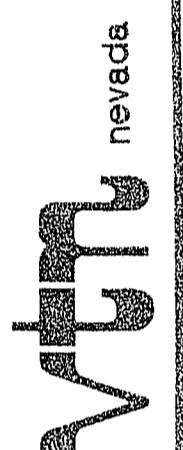


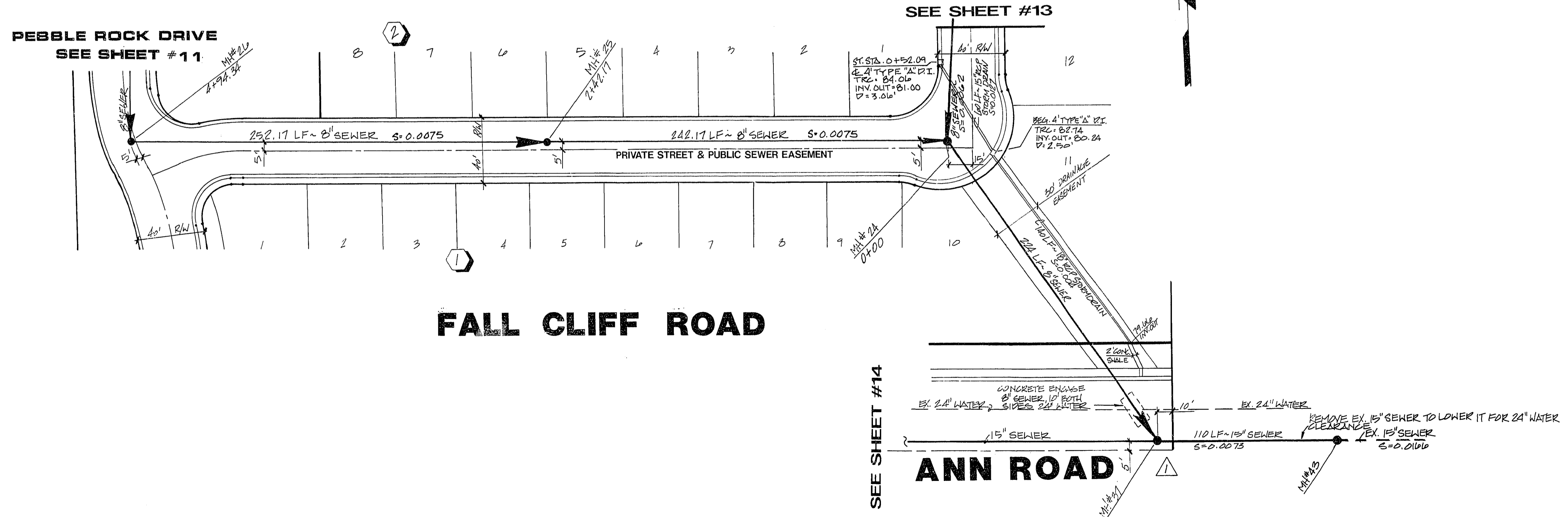
REV	DATE	BY	REVISION
1	1-27-91	JS	REV. & UNDER MIN. 51, ADD MIN. 4.5

DESERT CREEK ASSOCIATES  
LAS VEGAS, NEVADA

CONSULTING ENGINEERS • PLANNERS • LAND SURVEYORS  
2727 SOUTH RAINBOW BOULEVARD  
LAS VEGAS, NEVADA 89102-5148 PHONE (702) 873-7550 FAX (702) 362-2597



**NOT A PART**  
FUTURE DESERT CREEK UNIT 3



**BENCHMARK**  
BM = U.S.G.S. Brass Cap  
and Conc. stamped S169 Reset 1963  
Elev. = 2357.04  
Approx. 400' No. Ann Road & 4.0' East of  
the East E.P. NB Lane of Oran Gragson Expressway

**SEWER & STORMDRAIN  
PLAN & PROFILE**  
FALL CLIFF ROAD & ANN ROAD

**DESERT CREEK  
PHASE II UNIT 1**

SEAL  
*[Signature]*  
10-22-91

WO NO.	4000-1
BY	KFN, WJR
DATE	ALLA, 1991
SCALE	HORIZ. 1" = 40' VERT. 1" = 4'
SHEET	145
	OF 14 SHEETS