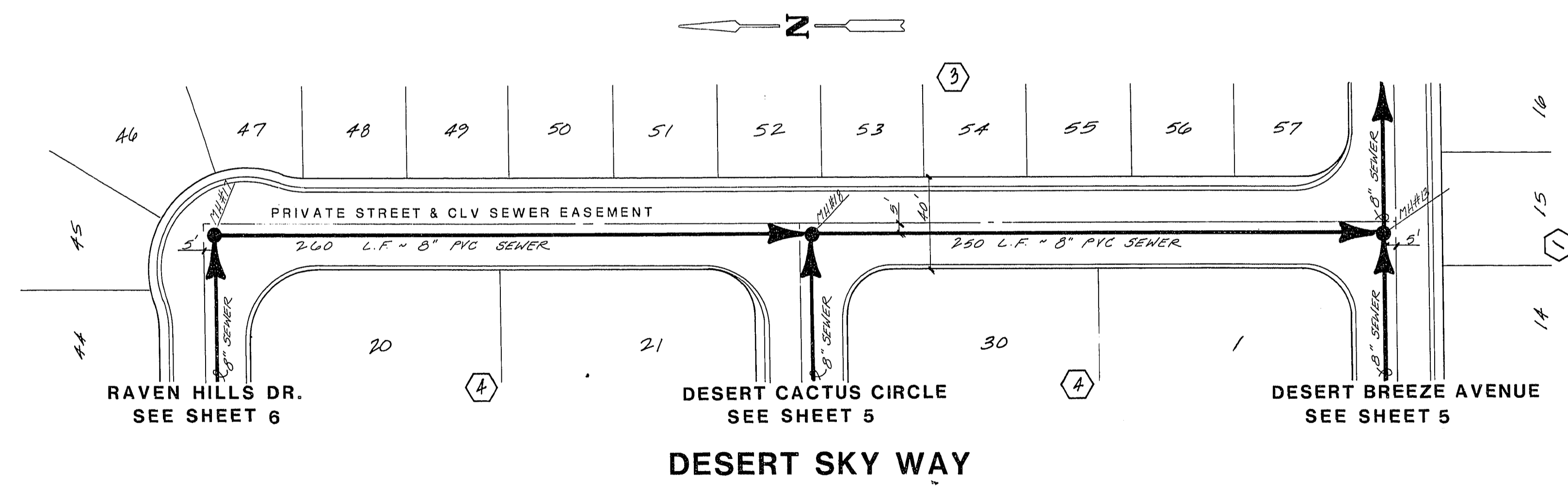
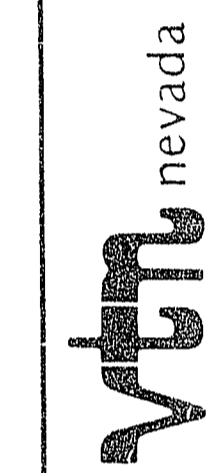


| REV | DATE | BY | REVISION |
|-----|------|----|----------|
| | | | |
| | | | |
| | | | |

HONVEST CORP.
LAS VEGAS, NEVADA

CONSULTING ENGINEERS - PLANNERS
2300 PASEO DEL PRADO BUILDING A SUITE 100
LAS VEGAS, NEVADA 89102 PHONE (702) 873-7550



SEWER PLAN & PROFILE
DESERT SKY WAY

DESERT CREEK - UNIT 2

TITLE
PROJECT

WD NO. 3803-2
BY RLM
DATE SEPT. 89
SCALE HOR. 1"=40'
VERT. 1"=4'

SHEET
7
OF 8 SHEETS

BENCHMARK
BM = U.S.G.S. Brass Cap
and Conc. stamped 6169 Reset 1963
Elev. = 2357.04
Approx. 400' No. Ann Road & 4.0' East of
the East E.P. NB Lane of Oran Gragson Expressway

Gregory S. Reddy
9/12/89

3074-4074-2