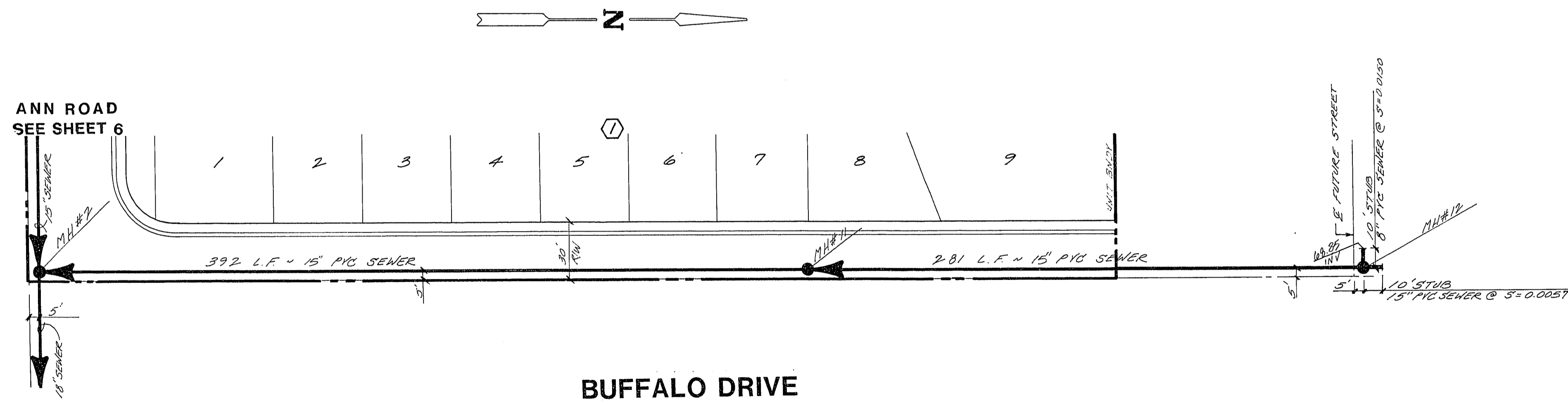
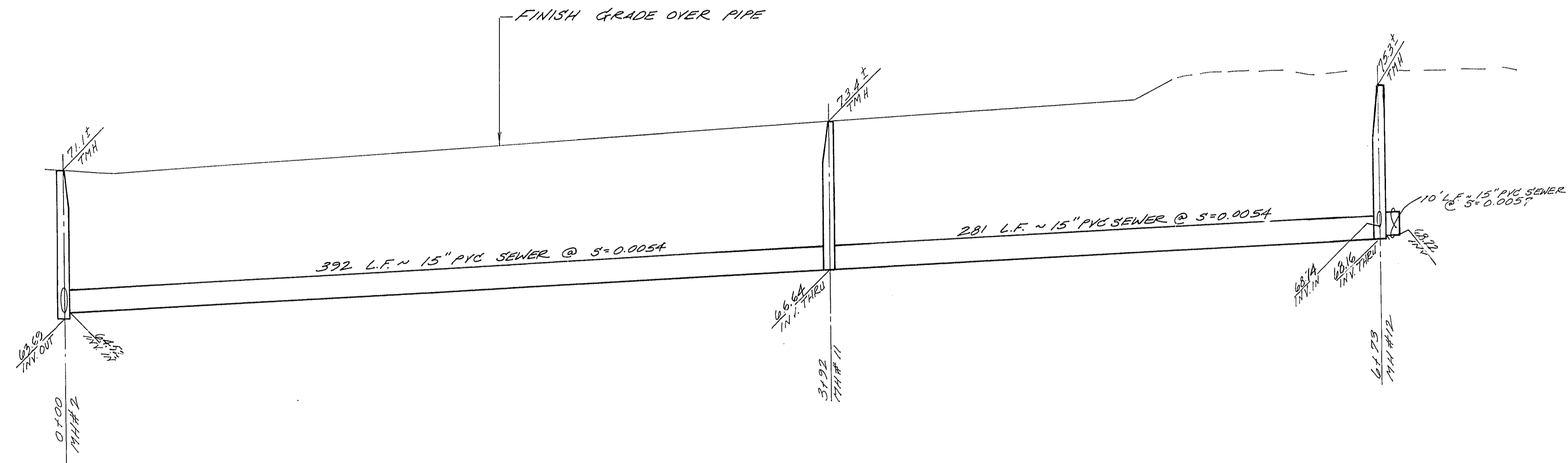


2376  
2372  
2368  
2364



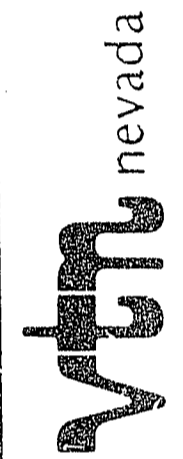
**BENCHMARK**  
BM = U.S.G.S. Brass Cap  
and Conc. stamped S169 Reset 1963  
Elev. = 2357.04  
Approx. 400' No. Ann Road & 4.0' East of  
the East E.P. NB Lane of Oran Gragson Expressway

*Design*  
8/30/89

REV	DATE	BY	REVISION

HONVEST CORP.  
LAS VEGAS, NEVADA

CONSULTING ENGINEERS - PLANNERS  
2300 PASEO DEL PRADO BUILDING A SUITE 100  
LAS VEGAS, NEVADA 89102 PHONE (702) 873-7550



**SEWER PLAN & PROFILE**  
BUFFALO DRIVE

**DESERT CREEK - UNIT 1**

NO. 3803-1  
BY RLM  
DATE AUG. 89  
SCALE HOR. 1" = 40'  
VERT. 1" = 4'

SHEET  
**9**  
OF 10 SHEETS

3094-4074-1