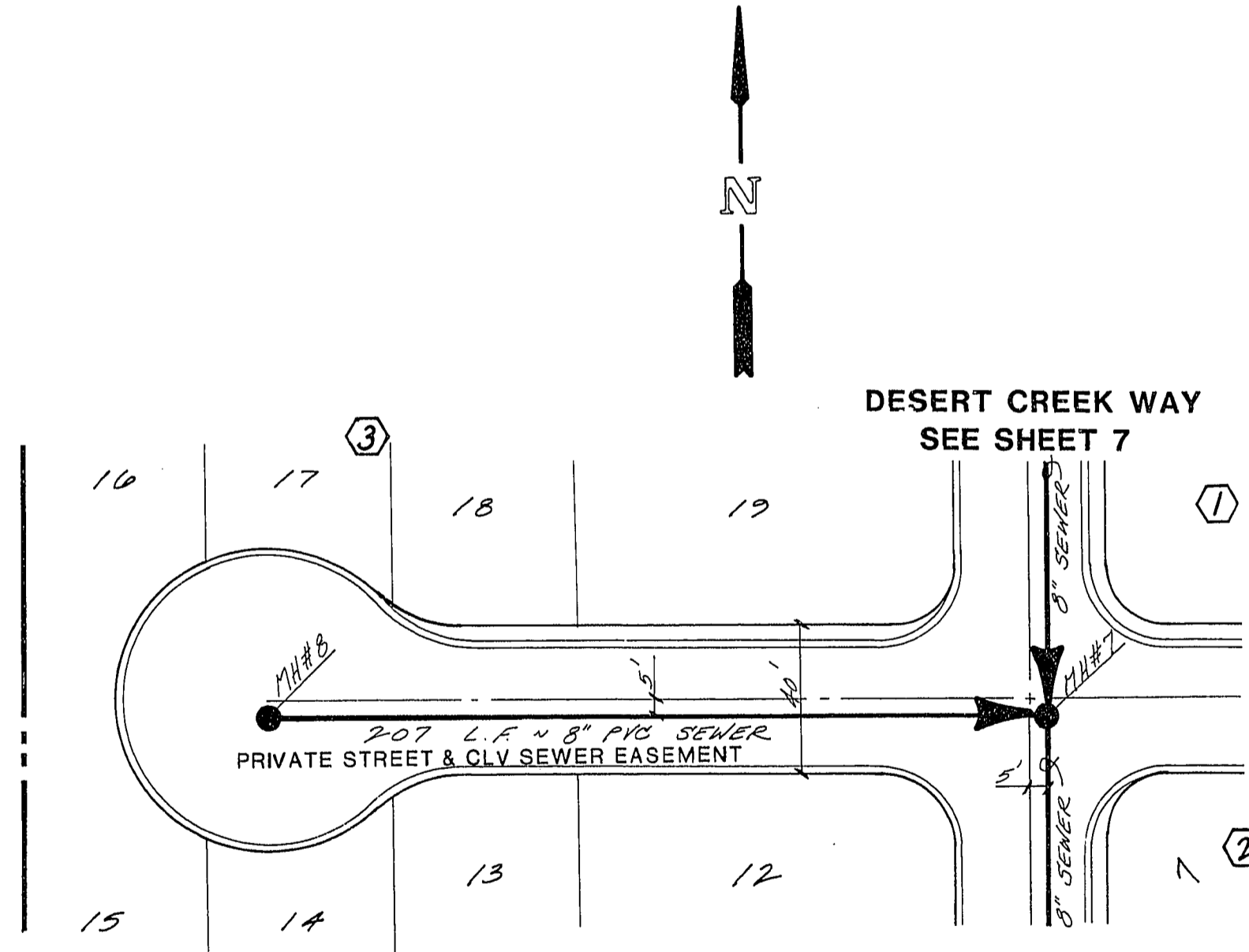


DESERT GREEN COURT



CROSSROADS LANE

**BENCHMARK**  
 BM = U.S.G.S. Brass Cap  
 and Conc. stamped S169 Reset 1963  
 Elev. = 2357.04  
 Approx. 400' No. Ann Road & 4.0' East of  
 the East E.P. NB Lane of Oran Gragson Expressway

*Deegan J. Paul*  
 2/30/89

REVISION	
REV	DATE BY
HONVEST CORP. LAS VEGAS, NEVADA	
CONSULTING ENGINEERS - PLANNERS 2300 PASEO DEL PRADO BUILDING A SUITE 100 LAS VEGAS, NEVADA 89102 PHONE (702) 673-7550	

TITLE	SEWER PLAN & PROFILE
PROJECT	DESERT GREEN COURT/CROSSROADS LANE
<b>DESERT CREEK - UNIT 1</b>	

NO. NO.	3803-1
BY	RLM
DATE	AUG. 89
SCALE	HOR. 1"=40' VERT. 1"=4'

SHEET	8
OF 10 SHEETS	107
3074-4074-1	