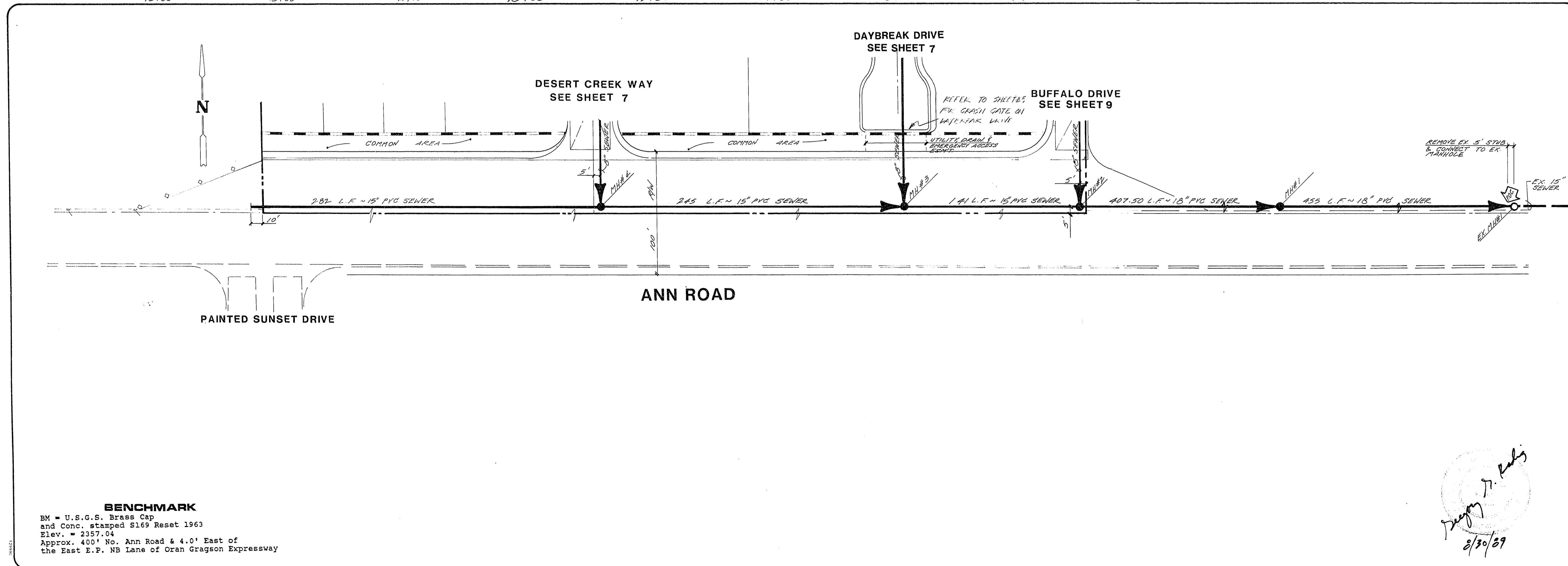
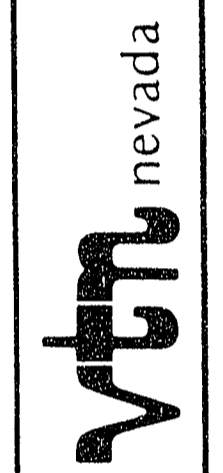


REV	DATE	BY	REVISION

HONVEST CORP.
LAS VEGAS, NEVADA

CONSULTING ENGINEERS - PLANNERS
2300 PASEO DEL PRADO BUILDING A SUITE 100
LAS VEGAS, NEVADA 89102 PHONE (702) 873-7550



SEWER PLAN & PROFILE
ANN ROAD

DESERT CREEK - UNIT 1

BENCHMARK
BM = U.S.G.S. Brass Cap
and Conc. stamped S169 Reset 1963
Elev. = 2357.04
Approx. 400' No. Ann Road & 4.0' East of
the East E.P. NB Lane of Oran Gragson Expressway

Jeffrey J. Rely
8/30/89

NO. 3803-1
BY RLM
DATE AUG. 89
SCALE HOR. 1"=40'
VERT. 1"=4'

SHEET
6
OF 10 SHEETS

307Y-4074-1