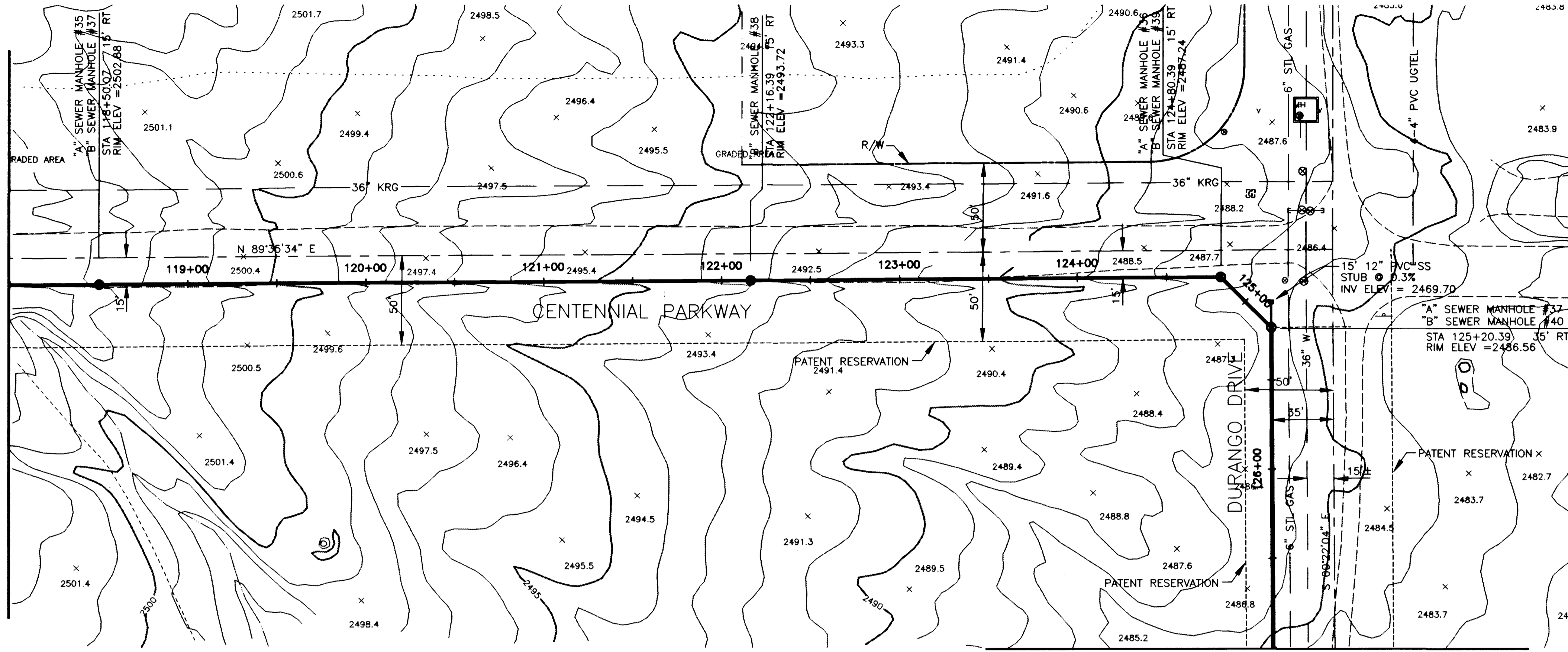


MATCHLINE STA 118+00.00
SEE DWG No. C11



MATCHLINE STA 127+00.00
SEE DWG No. C13

SANITARY SEWER ALTERNATIVES

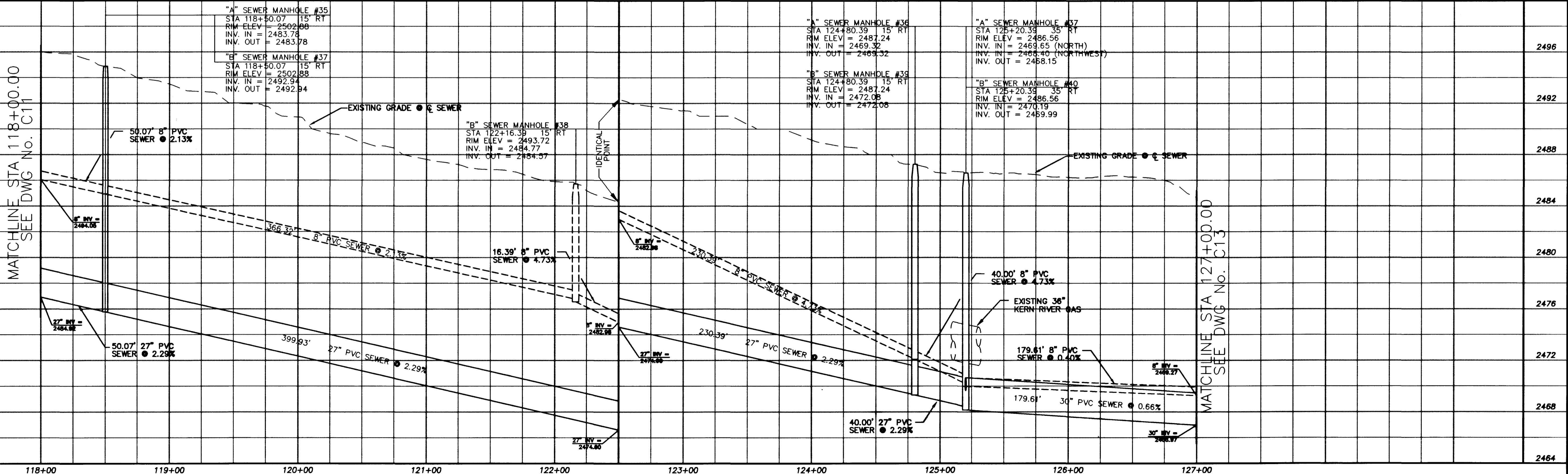
ALT "A" - 8" SEWER STA	1+03.75 TO STA	18+80.47
10" SEWER STA	18+80.47 TO STA	98+90.83
27" SEWER STA	98+90.83 TO STA	125+20.39
30" SEWER STA	125+20.39 TO STA	156+66.01
33" SEWER STA	156+66.01 TO STA	190+44.26
ALT "B" - 8" SEWER STA	1+03.75 TO STA	190+44.26
(FOR BIDDING PURPOSES ONLY)		

NOTE:
ALL EXISTING UTILITY LOCATIONS SHOWN HEREON ARE APPROXIMATE ONLY. IT SHALL BE THE CONTRACTOR'S RESPONSIBILITY TO DETERMINE THE EXACT VERTICAL AND HORIZONTAL LOCATION OF ALL EXISTING UNDERGROUND UTILITIES PRIOR TO CONSTRUCTION AND RELOCATE THESE UTILITIES AS NECESSARY. NO REPRESENTATION IS MADE THAT ALL UTILITIES ARE SHOWN HEREON. THE ENGINEER ASSUMES NO LIABILITY FOR UTILITIES NOT SHOWN OR UTILITIES NOT SHOWN IN THEIR PROPER LOCATIONS.

Avoid cutting underground utility lines. It's costly.
Call before you Dig
1-800-227-2600

SCALE: HORIZ. 1"=40'
VERT. 1"=4'

MATCHLINE STA 118+00.00
SEE DWG No. C11



MATCHLINE STA 127+00.00
SEE DWG No. C13

REVISIONS

NO.	DATE	DESCRIPTION

DURANGO INTERCEPTOR SEWER
DRAWN BY: J. ARROYO
DESIGNED BY: J. LUSTIG
CHECKED BY: L. ATWELL
DATE: 8-31-98
JOB NO.: 51449



Department of Public Works
DURANGO INTERCEPTOR SEWER
PLAN AND PROFILE
STA 118+00.00 TO STA 127+00.00

CITY OF LAS VEGAS
NEVADA
DRAWING No. 17
C12
26

